

KEYED NOTES

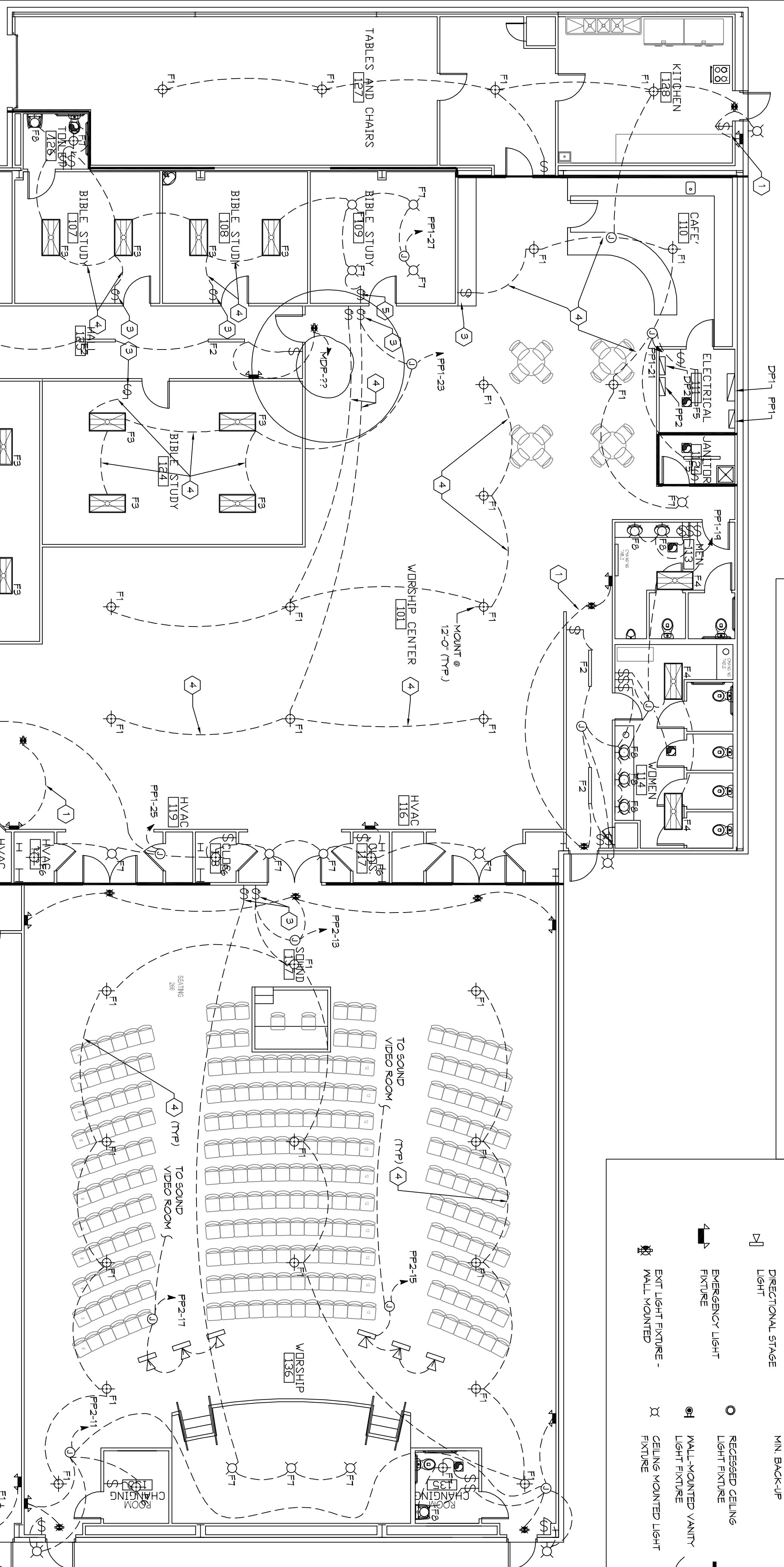
- 1 CONNECT EMERGENCY LIGHT CIRCUIT TO INSTALLED HOT OF LIGHTING CIRCUIT.
- 2 REUSE CIRCUIT INSTALLED IN PHASE 1 FOR LIGHT IN YOUTH CENTER.
- 3 0-10V DIMMER. CUTRON DIVA-DTV-COLOR.
- 4 PROVIDE (2) CONDUCTOR 0-10V WIRING WITH 120V CONDUCTORS FOR 0-10V DIMMING.
- 5 DIMMER CUTRON DVCL-1994

LEGEND

- 2x4 SUSPENDED FLUORESCENT LIGHT FIXTURE LITHONIA 26719 3 32 A12
- DIRECTIONAL STAGE LIGHT
- EMERGENCY LIGHT FIXTURE
- WALL MOUNTED EXIT LIGHT FIXTURE -
- RECESSED CEILING LIGHT FIXTURE
- WALL-MOUNTED VANITY LIGHT FIXTURE
- CEILING MOUNTED LIGHT FIXTURE
- LED WALL MOUNTED LIGHT FIXTURE WITH 90 MIN BACK-UP
- LIGHT SWITCH 120V COMMERCIAL GRADE
- LIGHT SWITCH - 3-WAY LOCAL CODES, RULES, REGULATIONS, AND REQUIREMENTS OF THE SERVICE PLUMBING COMPANY.
- REFER TO ARCHITECTURAL DRAWINGS FOR EXACT LOCATION AND MOUNTING INSTRUCTIONS FOR ALL LIGHT FIXTURES. NOTIFY THE ARCHITECT AND ENGINEER OF ANY DISCREPANCIES BETWEEN THESE PLANS AND THE ARCHITECTURAL PLANS RELATING TO QUANTITY, TYPE AND LOCATION OF DEVICES AND/OR FIXTURES.
- WHEN SPECIFIC LIGHT FIXTURE HAS BEEN SPECIFIED IN THE FUTURE SCHEDULE ELECTRICAL SHALL PROVIDE COMPLETE VENDOR SPECIFICATION, ALL PARTS AND HARDWARE TO INSURE PROPER FUNCTIONING OF THE FIXTURE.
- ALL CONDUCTORS SHALL BE #12 AWG UNLESS NOTED OTHERWISE.
- ALL 120V RINGS LONGER THAN 60 FEET SHALL BE #10 AWG AND 270V RINGS LONGER THAN 150 FEET SHALL BE #10 AWG UNLESS NOTED OTHERWISE.
- ALL CONDUCTORS SHALL BE COPPER.
- WHERE CONDUCTOR SIZES ARE NOTED ON DRAWINGS THAT ARE SIZE MOUNTED THE LIGHT FIXTURES 48" AFT UNLESS NOTED OTHERWISE ON DRAWINGS.
- ALL GANGED SWITCHES SHALL HAVE A COMMON GROUND FACED-LATE EACH MULTICIRCUIT SWITCH SHALL BE NO MORE THAN SIX (6) SWITCHES IN ONE LOCATION. ADDITIONAL MULTIGANGED BOXES SHALL BE STACKED VERTICALLY AND THE WIDTH OF THE MULTIGANGED SHALL BE AS EVEN AS POSSIBLE.
- EACH DIMMER SWITCH SHALL HAVE A WAITING RATING 25% HIGHER THAN THE TOTAL WATTAGE OF ALL LIGHTS TO BE CONTROLLED BY THE DIMMER. DIMMER SIZES 600, 1000, 1500, AND 2000 WATTS. LITRON SOVA 150W. DIMMER SWITCHES ARE GANGED WITH DIMMERS. THE LOW VOLTAGE DIMMING HAL LEE CUTRON NOVIA T-157AK.
- WHERE FLUORESCENT FIXTURES ARE SHOWN TO BE DIMMED THE FIXTURES SHALL HAVE DIMMING TYPE BALLASTS WHICH ARE COMPATIBLE WITH THE SPECIFIED DIMMERS.
- WHERE LED FIXTURES/LAMPS ARE SHOWN TO BE DIMMED THE DIMMER SHALL BE COMPATIBLE WITH THE FIXTURE/LAMP SPECIFIED OR PROVIDED.
- ALL EMERGENCY LIGHT FIXTURES SHALL HAVE 90 MINUTE BATTERY BACKUP WITH INTERCAL TEST BUTTON AND SHALL BE INDIVIDUALLY.
- ALL FLUORESCENT FIXTURES THAT UTILIZE DOUBLE-ENDED LAMPS AND CONTAIN BALLASTS SHALL BE PROVIDED WITH A DISCONNECTING MEANS IN ACCORDANCE WITH NEC 410.76.
- LIGHT SWITCH 120V COMMERCIAL GRADE
- LIGHT SWITCH - 3-WAY LOCAL CODES, RULES, REGULATIONS, AND REQUIREMENTS OF THE SERVICE PLUMBING COMPANY.
- REFER TO ARCHITECTURAL DRAWINGS FOR EXACT LOCATION AND MOUNTING INSTRUCTIONS FOR ALL LIGHT FIXTURES. NOTIFY THE ARCHITECT AND ENGINEER OF ANY DISCREPANCIES BETWEEN THESE PLANS AND THE ARCHITECTURAL PLANS RELATING TO QUANTITY, TYPE AND LOCATION OF DEVICES AND/OR FIXTURES.
- WHEN SPECIFIC LIGHT FIXTURE HAS BEEN SPECIFIED IN THE FUTURE SCHEDULE ELECTRICAL SHALL PROVIDE COMPLETE VENDOR SPECIFICATION, ALL PARTS AND HARDWARE TO INSURE PROPER FUNCTIONING OF THE FIXTURE.
- ALL CONDUCTORS SHALL BE #12 AWG UNLESS NOTED OTHERWISE.
- ALL 120V RINGS LONGER THAN 60 FEET SHALL BE #10 AWG AND 270V RINGS LONGER THAN 150 FEET SHALL BE #10 AWG UNLESS NOTED OTHERWISE.
- ALL CONDUCTORS SHALL BE COPPER.
- WHERE CONDUCTOR SIZES ARE NOTED ON DRAWINGS THAT ARE SIZE MOUNTED THE LIGHT FIXTURES 48" AFT UNLESS NOTED OTHERWISE ON DRAWINGS.
- ALL GANGED SWITCHES SHALL HAVE A COMMON GROUND FACED-LATE EACH MULTICIRCUIT SWITCH SHALL BE NO MORE THAN SIX (6) SWITCHES IN ONE LOCATION. ADDITIONAL MULTIGANGED BOXES SHALL BE STACKED VERTICALLY AND THE WIDTH OF THE MULTIGANGED SHALL BE AS EVEN AS POSSIBLE.
- EACH DIMMER SWITCH SHALL HAVE A WAITING RATING 25% HIGHER THAN THE TOTAL WATTAGE OF ALL LIGHTS TO BE CONTROLLED BY THE DIMMER. DIMMER SIZES 600, 1000, 1500, AND 2000 WATTS. LITRON SOVA 150W. DIMMER SWITCHES ARE GANGED WITH DIMMERS. THE LOW VOLTAGE DIMMING HAL LEE CUTRON NOVIA T-157AK.
- WHERE FLUORESCENT FIXTURES ARE SHOWN TO BE DIMMED THE FIXTURES SHALL HAVE DIMMING TYPE BALLASTS WHICH ARE COMPATIBLE WITH THE SPECIFIED DIMMERS.
- WHERE LED FIXTURES/LAMPS ARE SHOWN TO BE DIMMED THE DIMMER SHALL BE COMPATIBLE WITH THE FIXTURE/LAMP SPECIFIED OR PROVIDED.
- ALL EMERGENCY LIGHT FIXTURES SHALL HAVE 90 MINUTE BATTERY BACKUP WITH INTERCAL TEST BUTTON AND SHALL BE INDIVIDUALLY.
- ALL FLUORESCENT FIXTURES THAT UTILIZE DOUBLE-ENDED LAMPS AND CONTAIN BALLASTS SHALL BE PROVIDED WITH A DISCONNECTING MEANS IN ACCORDANCE WITH NEC 410.76.

GENERAL LIGHTING NOTES

1. ALL WORK SHALL COMPLY WITH APPLICABLE NATIONAL, STATE AND LOCAL CODES, RULES, REGULATIONS, AND REQUIREMENTS OF THE SERVICE PLUMBING COMPANY.
2. REFER TO ARCHITECTURAL DRAWINGS FOR EXACT LOCATION AND MOUNTING INSTRUCTIONS FOR ALL LIGHT FIXTURES. NOTIFY THE ARCHITECT AND ENGINEER OF ANY DISCREPANCIES BETWEEN THESE PLANS AND THE ARCHITECTURAL PLANS RELATING TO QUANTITY, TYPE AND LOCATION OF DEVICES AND/OR FIXTURES.
3. WHEN SPECIFIC LIGHT FIXTURE HAS BEEN SPECIFIED IN THE FUTURE SCHEDULE ELECTRICAL SHALL PROVIDE COMPLETE VENDOR SPECIFICATION, ALL PARTS AND HARDWARE TO INSURE PROPER FUNCTIONING OF THE FIXTURE.
4. ALL CONDUCTORS SHALL BE #12 AWG UNLESS NOTED OTHERWISE.
5. ALL 120V RINGS LONGER THAN 60 FEET SHALL BE #10 AWG AND 270V RINGS LONGER THAN 150 FEET SHALL BE #10 AWG UNLESS NOTED OTHERWISE.
6. ALL CONDUCTORS SHALL BE COPPER.
7. WHERE CONDUCTOR SIZES ARE NOTED ON DRAWINGS THAT ARE SIZE MOUNTED THE LIGHT FIXTURES 48" AFT UNLESS NOTED OTHERWISE ON DRAWINGS.
8. ALL GANGED SWITCHES SHALL HAVE A COMMON GROUND FACED-LATE EACH MULTICIRCUIT SWITCH SHALL BE NO MORE THAN SIX (6) SWITCHES IN ONE LOCATION. ADDITIONAL MULTIGANGED BOXES SHALL BE STACKED VERTICALLY AND THE WIDTH OF THE MULTIGANGED SHALL BE AS EVEN AS POSSIBLE.
9. EACH DIMMER SWITCH SHALL HAVE A WAITING RATING 25% HIGHER THAN THE TOTAL WATTAGE OF ALL LIGHTS TO BE CONTROLLED BY THE DIMMER. DIMMER SIZES 600, 1000, 1500, AND 2000 WATTS. LITRON SOVA 150W. DIMMER SWITCHES ARE GANGED WITH DIMMERS. THE LOW VOLTAGE DIMMING HAL LEE CUTRON NOVIA T-157AK.
10. WHERE FLUORESCENT FIXTURES ARE SHOWN TO BE DIMMED THE FIXTURES SHALL HAVE DIMMING TYPE BALLASTS WHICH ARE COMPATIBLE WITH THE SPECIFIED DIMMERS.
11. WHERE LED FIXTURES/LAMPS ARE SHOWN TO BE DIMMED THE DIMMER SHALL BE COMPATIBLE WITH THE FIXTURE/LAMP SPECIFIED OR PROVIDED.
12. ALL EMERGENCY LIGHT FIXTURES SHALL HAVE 90 MINUTE BATTERY BACKUP WITH INTERCAL TEST BUTTON AND SHALL BE INDIVIDUALLY.
13. ALL FLUORESCENT FIXTURES THAT UTILIZE DOUBLE-ENDED LAMPS AND CONTAIN BALLASTS SHALL BE PROVIDED WITH A DISCONNECTING MEANS IN ACCORDANCE WITH NEC 410.76.



LIGHTING FIXTURE SCHEDULE

TYPES	REMARKS	CATALOG NO.	MOUNTING	VOLT	QTY	TYPE	TOTAL WATTS	NOTES
F1	JFU PENDANT 8000LM	PORTFOLIO 48-800A-90 30-DE010-MB	PENDANT	120	1	LED	80	3000K
F2	NARROW SURFACE 2400LM	BAKTCO B56205-4 30-L-A-V RIFY MOUNTING-SN-AM	SURFACE/PENDANT	120	1	LED	6	3000K
F3	FLAT PANEL 2x4 5500LM	METALUX 24FP5830 C4 WITH SURFACE MOUNT KIT	SURFACE	120	1	LED	50	3000K
F4	FLAT PANEL 2x4 3400LM	METALUX 24FP5830 C4 WITH SURFACE MOUNT KIT	SURFACE	120	1	LED	40	3000K
F5	STRIP 3450LM	METALUX 48NLED-LD 5-345L-LN-INV-CDI	SURFACE	120	1	LED	25	3000K
F6	DRON 1060LM	METALUX FM-LED-12-12 MH-850-FR	SURFACE	120	1	LED	14	3000K
F7	DOWNLIGHT 400LM	HALO ML5604980 -5429C-E55 OCAT	RECESS	120	1	LED	4	3000K
F8	VANITY LIGHT	OXVGEN 3-53T-2124	WALL	120	1	LED	15	2700K

2 LIGHTING PLAN PHASE B
SCALE: 1/8"=1'-0"

DAMMON ENGINEERING, INC.
LOUISIANA & MISSISSIPPI

Chief Engineer: Brian Mistich, PE
554 Old Spanish Trail
Sudlet, LA 70458

www.dammonengineering.com
info@dammonengineering.com
PH: 985.649.5832 F: 985.641.5950

REVISIONS	DESCRIPTION	DATE

PEARL RIVER CONSULTING
34492 WILLIS ALLEY
PEARL RIVER LA.

JOB No: 2340 DATE: 04/30/2018
DRAWN BY: CKD CHECKED BY: BAM

SHEET TITLE: LIGHTING PLAN PHASE B
DRAWING NUMBER: E104

15 OF 15