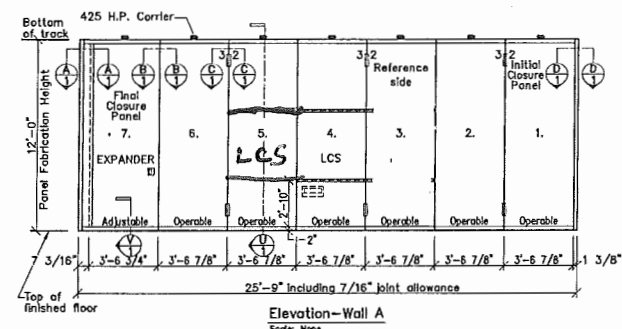


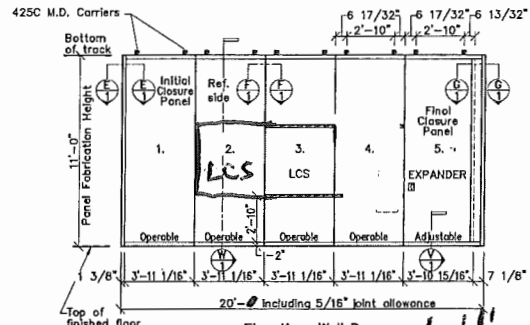
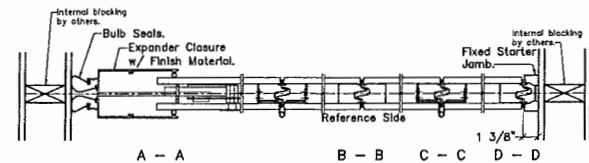
LCS PANEL 4+5 ONLY

LCS PANEL 2+3 ONLY



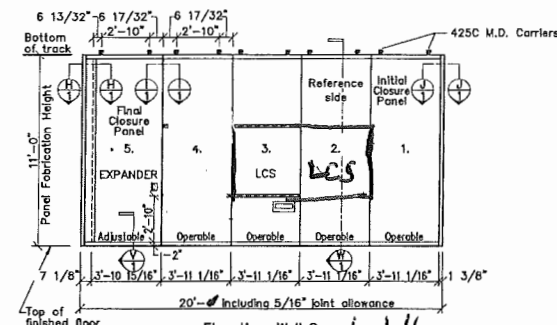
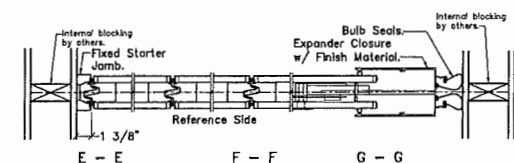
Elevation-Wall A
Scale: None

- Panel(s) #3 & 4
Contains Panel Width x 4'-0" White LCS Board on Reference and Back Side w/ 1" bead molding provided by K.W.Co. and installed by Others in the field.
- Panel(s) #3
Contains (1) flush mount marker tray on Reference Side.
- Panel(s) #4
Contains (1) flush mount marker tray on Back Side.



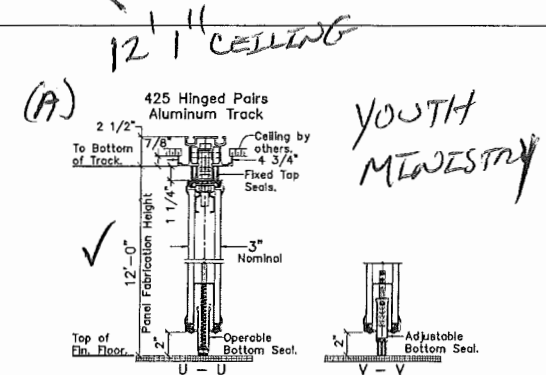
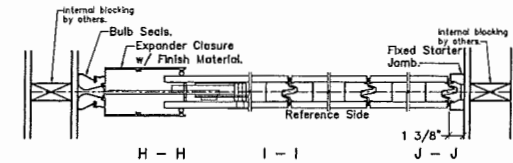
Elevation-Wall B
Scale: None

- Panel(s) #3 & 4
Contains Panel Width x 4'-0" White LCS Board on Back Side w/ 1" bead molding provided by K.W.Co. and installed by Others in the field.
- Panel(s) #4
Contains (1) flush mount marker tray on Back Side.

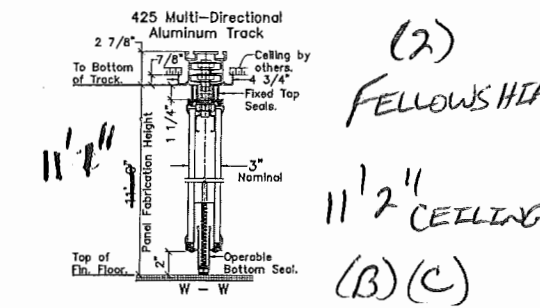


Elevation-Wall C
Scale: None

- Panel(s) #3 & 4
Contains Panel Width x 4'-0" White LCS Board on Reference and Back Side w/ 1" bead molding provided by K.W.Co. and installed by Others in the field.
- Panel(s) #3
Contains (1) flush mount marker tray on Reference Side.
- Panel(s) #4
Contains (1) flush mount marker tray on Back Side.



12' 1" CEILING
(A)
425 Hinged Pairs Aluminum Track
2 1/2"
To Bottom of Track
7/8"
1 1/4"
12'-0" Panel Fabrication Height
3"
Nominal
Top of Fin. Floor
U-U
V-V



11'-0" Panel Fabrication Height
2 7/8"
To Bottom of Track
7/8"
1 1/4"
11'-0" Panel Fabrication Height
3"
Nominal
Top of Fin. Floor
W-W
(B)
(C)

General notes:
Vertical trim type & color:
TRIMLESS BRONZE
Finish material type & color (reference side):
Standard Vinyl, COLOR TO BE SELECTED
Finish material type & color (back side):
Same Material as Reference Side
Wall A:
Panel #7 contains a flush pull handle on reference side
Wall B/C:
Panel #5 contains a flush pull handle on reference side
NOTE: OPERABLE WALL INSTALLATION TO CONFORM WITH ASTM E557
NOTE: FLOOR TOLERANCE BENEATH OPERABLE WALL NOT TO EXCEED 1/8" IN 12'-0" (NON-ACCUMULATIVE) PER ASTM E557

REVISIONS
K26486-01 11/01/18 KTM Added Drop Brackets.
K26486-02 01/08/19 BWW Wall A-C Changed Opening Length.

YOUTH MINISTRY
FELLOWSHIP COLOR
SKW-CIRCUIS

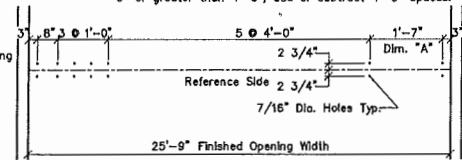
FIELD NOTE:
If "Finished Opening Width" varies from what KWIK-WALL has indicated, dimension "A" should be changed to reflect this difference. Dimension "A" can be a minimum of 6" or maximum of 4'-6". If dimension "A" is less than 6" or greater than 4'-6", add or subtract 4'-0" spaces.

NOTE:
DO NOT CHANGE ANY "HOLD" DIMENSION WITHOUT KWIK-WALL CO. APPROVAL

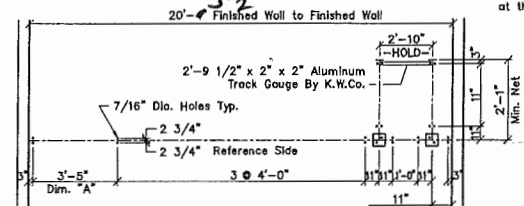
Field note:
Start beam punching at this end

FIELD NOTE:
If "Finished Opening Width" varies from what KWIK-WALL has indicated, dimension "A" should be changed to reflect this difference. Dimension "A" can be a minimum of 6" or maximum of 4'-6". If dimension "A" is less than 6" or greater than 4'-6", add or subtract 4'-0" spaces.

Field note:
Start beam punching at this end



Beam Template-Wall A
Scale: None

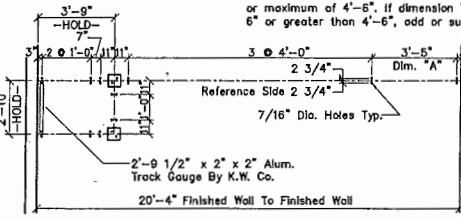


Beam Template-Wall B
Scale: None

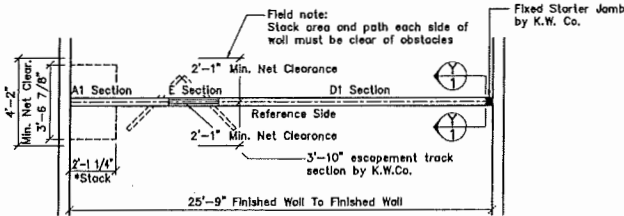
NOTE:
DO NOT CHANGE ANY "HOLD" DIMENSION WITHOUT KWIK-WALL CO. APPROVAL

FIELD NOTE:
If "Finished Opening Width" varies from what KWIK-WALL has indicated, dimension "A" should be changed to reflect this difference. Dimension "A" can be a minimum of 6" or maximum of 4'-6". If dimension "A" is less than 6" or greater than 4'-6", add or subtract 4'-0" spaces.

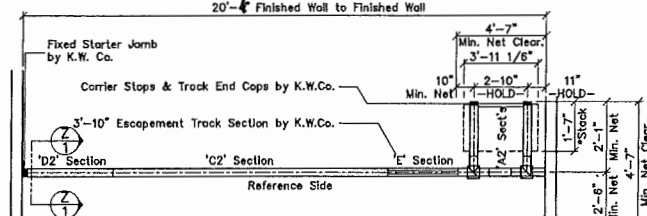
Field note:
Start beam punching at this end



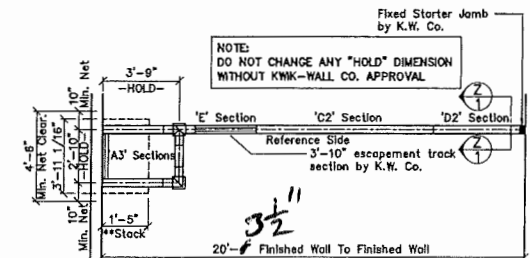
Beam Template-Wall C
Scale: None



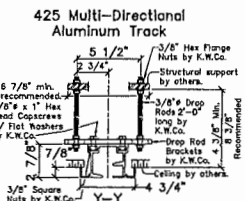
Track Plan-Wall A
Scale: None



Track Plan-Wall B
Scale: None



Track Plan-Wall C
Scale: None



Wall A - 425 HP Alum. Track:
A1 Section = 1 x 12'-0"
E Section = 1 x 3'-10"
D1 Section = 1 x 9'-11"
Panel Hanging Weight (Lbs. L/F) In Extended Position = 135.0
*Concentrated Panel Stack Weight (Lbs.) In Retracted Position = 3399.0
Field Note:
KWIK-WALL recommends away bracing (by others) every 4'-0" on alternating sides of track.

NOTE:
DO NOT CHANGE ANY "HOLD" DIMENSION WITHOUT KWIK-WALL CO. APPROVAL

| | | | |
|--|---|--------|--|
| | Model:2030 Hinged Pair - Wall A / Steel Frame / Acoustical Substrate | STC:50 | Drawn by: BWW Date: 10/05/18 Sheet 1 of 1 K26486-02 |
| | Model:2020 Multi-Directional - Wall B/C / Steel Frame / Acoustical Substrate Dist: Southeastern Overhead Door Inc. Phone: (225)753-1595 Job: Redemption Church Baton Rouge, LA Fax: (225)753-6895 | STC:50 | |