

FLOOR-CEILING SYSTEMS, STEEL-FRAMED, WOOD-FLOOR

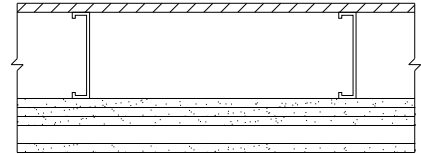
GA FILE NO. FC 4750

GENERIC

**2 HOUR
FIRE**

WOOD FLOOR, STEEL CHANNEL JOISTS, GYPSUM WALLBOARD, RIGID FURRING CHANNELS

Base layer 5/8" type X gypsum wallboard applied at right angles to channel shaped, minimum 8" deep, 18 gage galvanized steel joists 24" o.c. with 1 1/8" Type S-12 drywall screws 12" o.c. **Second** layer 5/8" type X gypsum wallboard applied at right angles to joists with 1 5/8" Type S-12 drywall screws 12" o.c. Second layer joints offset 24" from base layer joints. **Third** layer 5/8" type X gypsum wallboard applied at right angles to joists with 2 3/8" Type S-12 drywall screws 12" o.c. Third layer joints offset 12" from second layer joints. Hat-shaped rigid furring channels 24" o.c. applied at right angles to joists over third layer with two 2 3/8" long Type S-12 drywall screws at each joist. **Face** layer 5/8" type X gypsum wallboard applied at right angles to furring channels with 1 1/8" Type S drywall screws 12" o.c. Joists supporting 3/4" T & G edge plywood floor applied at right angles to joists with #10x1 5/8" screws 12".



Approx. Ceiling

Weight: 12 psf

Fire Test: UL R4024, 02NK04478,
2-20-03;
UL Design L556