

**LIFE-SAFETY INFORMATION**

<b>APPLICABLE CODES</b>	
NFPA 101 LIFE-SAFETY CODE 2015	
OCCUPANCY TYPE(S) AND CHAPTER(S)	
ASSEMBLY (CHAPTER 12)	
MULTIPLE, MIXED, OR SEPARATE OCCUPANCY (REFERENCE CHAPTER 6)	
N/A	
<b>OCCUPANT LOAD FACTOR</b>	(REFERENCE TABLE 7.3.1.2)
2,100 SF 15 SF PER OCC	149 OCCUPANTS
<b>CLASSIFICATION OF HAZARD OF CONTENTS</b>	
(REFERENCE: OCCUPANCY CHAPTER AND 6.2.2: SPECIFY LOW, ORDINARY, OR HIGH)	
<b>CONSTRUCTION TYPE(S)</b> (REFERENCE: CHAPTERS, TABLE A.8.2.1.2 AND COMMENTARY TABLE 8.1 IN HANDBOOK)	
II(222)	
<b>MINIMUM EXIT SEPARATION DISTANCE FOR REMOTELY LOCATED EXITS</b>	
(REFERENCE: SECTION 7.5; SPECIFY 1/2 OR 1/3 DIAGONAL DISTANCE OF AREA SERVED)	
1/2 DIAGONAL = 51'-4"	
<b>MAXIMUM DEAD-END CORRIDORS</b> (REFERENCE: OCCUPANCY CHAPTER AND TABLE A.7.6)	
20 FEET	
<b>MAXIMUM COMMON PATH OF TRAVEL DISTANCE</b> (REFERENCE: OCCUPANCY CHAPTER AND TABLE A.7.6)	
20 FEET/75 FEET	
<b>MAXIMUM TRAVEL DISTANCE TO EXITS</b> (REFERENCE: OCCUPANCY CHAPTER AND TABLE A.7.6)	
200 FEET	
*MAIN ENTRANCE MUST BE SIGNED TO ACCOMMODATE 1/2 OCCUPANT LOAD OF BUILDING	
<b>EXTINGUISHMENT REQUIREMENTS</b>	NOT SPRINKLERED (NOT REQUIRED)
<b>DETECTION, ALARM, AND COMMUNICATION SYSTEMS</b>	YES
<b>ALLOWABLE HEIGHT AND BUILDING AREA</b>	PER IBC EQUIVALENT CONSTRUCTION TYPE

**BUILDING CODE INFORMATION**

<b>APPLICABLE CODES</b>	
BC 2015	
<b>ASSEMBLY GROUP AS</b>	(IBC 2015 CHAPTER 13)
<b>OCCUPANT LOAD CALCULATIONS</b>	(TABLE 1004.1.2)
ASSEMBLY (LESS CONCENTRATED USE, WITHOUT FIXED SEATING)	15 SF PER OCCUPANT (NET) 149 OCCUPANTS
<b>CONSTRUCTION TYPE(S)</b>	(TABLE 503)
IB (SECTION 503)	
<b>ALLOWABLE HEIGHT AND BUILDING AREA LIMITED BY TYPE OF CONSTRUCTION</b>	
MAXIMUM HEIGHT IN STORIES (SECTION 503 & 504, TABLE 503)	2
MAXIMUM AREA IN SQUARE FEET (SECTION 503, 506 & 507, TABLE 503)	9,500 SF

**WIND SPEED DESIGN REQUIREMENTS**

THIS BUILDING SHALL BE DESIGNED WITH IBC SEC 1609 AS A FULLY ENCLOSED BLDG USING THE FOLLOWING INFORMATION:

WIND DESIGN DATA:

DETERMINATION OF WIND LOADS SHALL BE IN ACCORDANCE WITH IBC SEC 1609.5 (A), (B), OR (C) DEPENDING ON THE RISK CATEGORY

BASIC WIND SPEED (3 SECOND GUST) = 137 MPH (IBC FIG 1609.4)

RISK FACTOR:	CATEGORY II BLDG	SURFACE ROUGHNESS =	B
TOPOGRAPHIC FACTOR =	1	EXPOSURE =	B
DESIGN WIND PRESSURE (ASCE 7-10 TABLE 28.6-1):			37.4 PSF
INTERNAL PRESSURE COEFFICIENT (ASCE 7-10 TABLE 28.11-1):			± 0.18

LIVE LOADS (IBC SEC 1607)

ASSEMBLY NO FIXED SEATING (IBC TABLE 1607.1):	100 PSF
PLATFORMS (ASSEMBLY) (IBC TABLE 1607.1):	100 PSF
LOBBIES (IBC TABLE 1607.1):	100 PSF
STORAGE, LIGHT (IBC TABLE 1607.1):	125 PSF
ROOF LIVE LOADS (IBC TABLE 1607.1):	20 PSF UNIFORM, 300 LB CONCENTRATED
SNOW LOADS (IBC TABLE 1608):	
GROUND SNOW LOAD (IBC FIG 1608.2):	5 PSF

**FLOOD ZONE INFORMATION**

BASED ON THE SURVEY OF THIS PROPERTY BY J.V. BURKES AND ASSOCIATES, INC. THIS PROPERTY IS IN A SPECIAL FLOOD HAZARD AREA. F.I.R.M. COMMUNITY MAP NO 228205 0275 C; REVISED 10/11/1984

FLOOD ZONE:	C & A	BASE FLOOD ELEVATION:	N/A
-------------	-------	-----------------------	-----

ELEVATIONS REFER TO NGVD 1929 DATUM

**PROJECT STATISTICS**

SQUARE FOOTAGE	
NEW BUILDING	2,100 SF
TOTAL ENCLOSED SPACE	2,100 SF

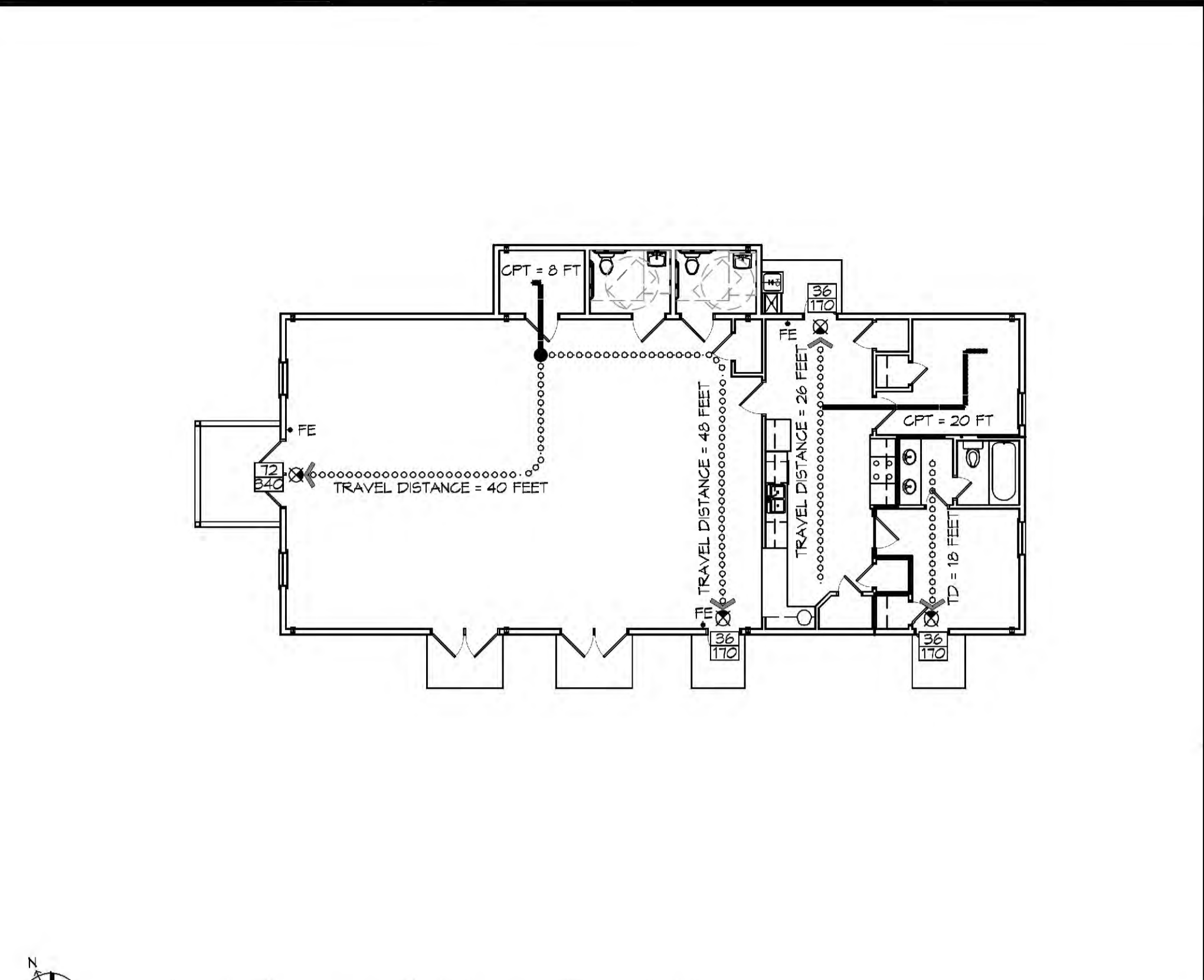
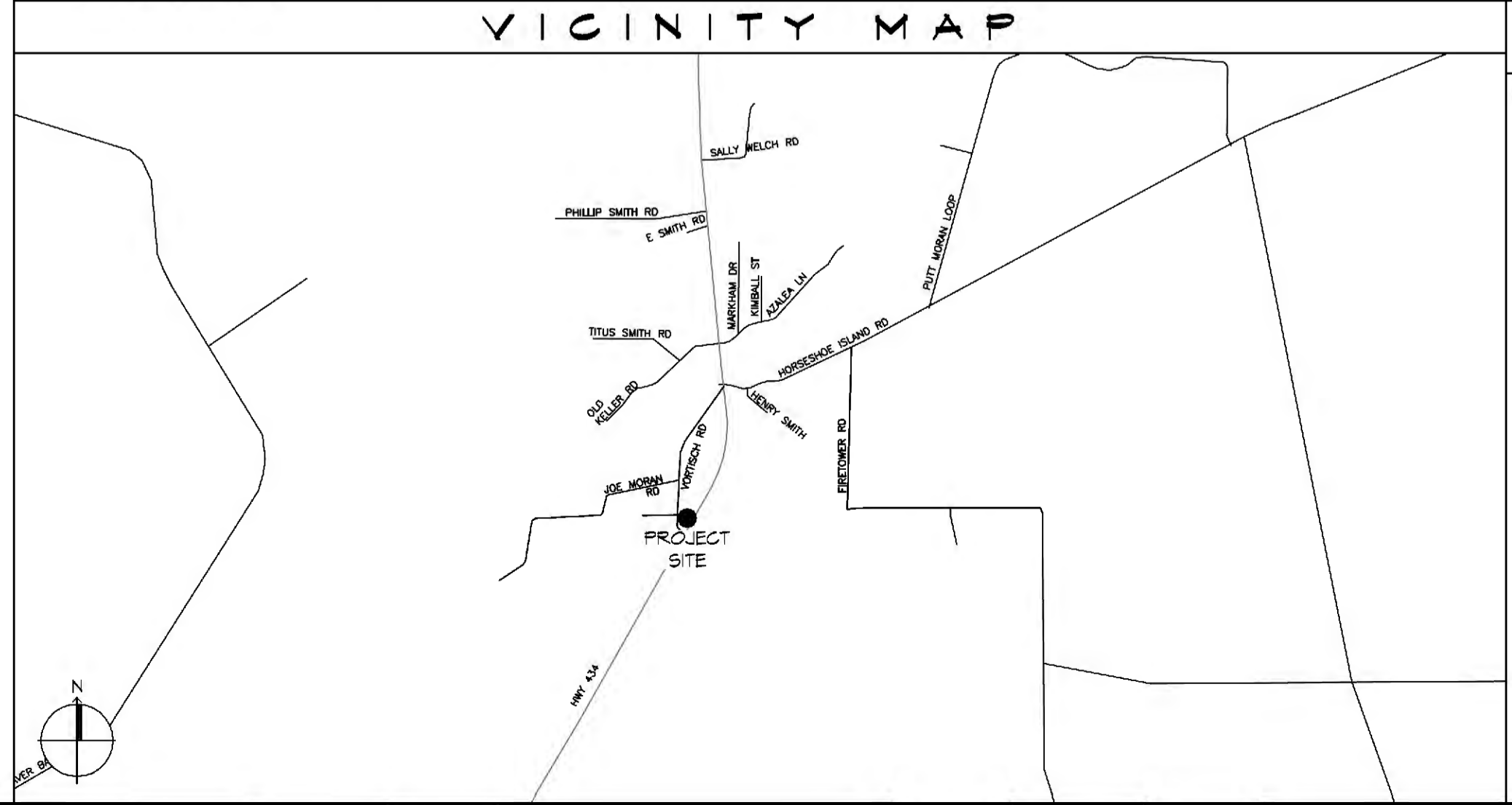
# FOUR LADY OF FATIMA

## MULTIPURPOSE BUILDING

### LACOMBE LOUISIANA

**LIFE-SAFETY LEGEND**

SYMBOL	DESCRIPTION
	EXITS
	DOOR FIRE RATING (MINUTES)
	DOOR WIDTH/EGRESS CAPACITY
	EXIT LIGHT
	FIRE EXTINGUISHER AND CABINET
	FIRE EXTINGUISHER IV WALL MTD BRACKET
	COMMON PATH OF TRAVEL
	TRAVEL DISTANCE
	DECISION POINT
	SMOKE PARTITION
	ONE-HOUR FIRE RATED PARTITION
	TWO-HOUR FIRE RATED PARTITION
	TWO-HOUR FIRE/SMOKE PARTITION
	FOUR-HOUR RATED PARTITION



REVISIONS

#	DESCRIPTION	DATE

SEAL:

**SHEET INDEX**

SHEET #	SHEET TITLE
0001	GENERAL PROJECT, LIFE-SAFETY AND CODE INFORMATION
0002	ACCESSIBILITY INFORMATION
C101	SITE PLAN
C102	SITE DRAINAGE PLAN
C103	SITE UTILITY PLAN/EROSION CONTROL
A101	FLOOR PLAN
A102	REFLECTED CEILING PLAN
A103	EXTERIOR ELEVATIONS
P101	PLUMBING FLOOR PLAN
M101	MECHANICAL FLOOR PLAN, DETAILS AND SCHEDULES
E101	ELECTRICAL FLOOR PLAN - POWER AND LIGHTING
E102	ELECTRICAL PANEL AND ONE LINE DIAGRAM

**GENERAL NOTES**

- ALL MATERIALS AND WORK, INCIDENTAL TO THE CONSTRUCTION OF THIS PROJECT, SHALL CONFORM TO ALL GOVERNING CODES, AND REGULATIONS OF AGENCIES IN AUTHORITY.
- CONTRACTOR SHALL PROVIDE ALL PUBLIC PROTECTIONS NECESSARY AS REQUIRED BY LAW.
- THE DRAWINGS, SPECIFICATIONS AND ANY SUBSEQUENTLY ISSUED ADDENDA, AMENDMENTS OR SUCH CHANGE ORDERS APPROVED BY THE OWNER AND THE CONTRACTOR ARE PART OF THESE CONTRACT DOCUMENTS.
- DO NOT SCALE DRAWINGS.** CONSULT WITH THE ARCHITECT REGARDING ANY ITEMS IN THE CONTRACT DOCUMENTS THAT REQUIRE CLARIFICATION.
- TRASH SHALL BE REMOVED FROM THE SITE NOT LESS THAN TWICE MONTHLY.
- THE GENERAL CONTRACTOR SHALL VERIFY EXISTING CONDITIONS PRIOR TO COMMENCING WORK AND REPORT ANY AND ALL DISCREPANCIES TO THE ARCHITECT.
- CONTRACTOR VEHICLES AND EQUIPMENT NECESSARY FOR CONSTRUCTION MAY BE PARKED ON THE SITE. OTHER VEHICLES PARKED ON THE SITE REQUIRE THE OWNER'S PERMISSION.
- NAMING A CERTAIN BRAND, MAKE OR MANUFACTURER IS TO DESIGNATE THE GENERAL STYLE, TYPE, CHARACTER AND QUALITY STANDARD OF THE PRODUCT DESIRED. SUBSTITUTION REQUESTS MUST BE SUBMITTED PRIOR TO BIDDING.
- ALL MATERIALS/EQUIPMENT SHALL BE INSTALLED PER MANUFACTURER'S RECOMMENDATIONS. WORK NOT CONSISTENT WITH MANUFACTURER'S RECOMMENDATIONS WILL BE REJECTED BY OWNER/ARCHITECT.

**DAMMON ENGINEERING, INC.**

LOUISIANA & MISSISSIPPI

www.dammonengineering.com  
 info@dammonengineering.com  
 Chief Engineer: Brian Mistich, PE  
 554 Old Spanish Trail  
 Slidell, LA 70488  
 PH: 985.449.9832

REVISIONS

#	DESCRIPTION	DATE

SEAL:

FOUR LADY OF FATIMA

MULTI-PURPOSE BUILDING

6610 VORTSCH ROAD  
LACOMBE, LOUISIANA 70445

JOB No: 2570 | DATE: 08-11-2020  
DRAWN BY: RLD | CHECKED BY: C&D

SHEET TITLE:  
GENERAL PROJECT,  
LIFE-SAFETY, AND  
BUILDING CODE  
INFORMATION

DRAWING NUMBER:  
**0001**

SHEET No: 1 of 12





