

**1 SITE PLAN**  
SCALE: 1" = 30'

NEW SITE

<b>PLANNING</b>	ZONED B2 HWY COMMERCIAL
<b>FLOOD ZONE</b>	
<b>BUILDING SETBACK LINES</b>	FRONT - 35' SIDES - 10' REAR - 25'
<b>BUILDING ELEVATION</b>	BASE FLOOD ELEVATION = 0' FINISHED FLOOR ELEVATION = 3.5'
<b>PARKING</b>	1 SPACE PER 4 OCCUPANTS 116 SEATS / 4 = 44 PARKING SPACES REQUIRED 2 HANDICAP PARKING SPACES PROVIDED 48 REGULAR PARKING SPACES PROVIDED TOTAL PARKING SPACES PROVIDED 50
<b>SITE LIGHTING</b>	EXTERIOR LIGHTING SHALL BE SHADED OR INWARDLY DIRECTED IN SUCH A MANNER SO THAT NO DIRECT LIGHTING OR GLARE BE CAST BEYOND THE PROPERTY LINE. THE INTENSITY OF SUCH LIGHTING SHALL NOT EXCEED ONE FOOT CANDLE AS MEASURED AT THE ADJUTING PROPERTY LINE.

**DAMMON ENGINEERING, INC.**  
LOUISIANA & MISSISSIPPI

Chief Engineer: Brian Mistich, PE  
554 Old Spanish Trail  
Suldel, LA 70458

www.dammonengineering.com  
info@dammonengineering.com  
PH: 985.649.5832 F: 985.641.5950

REVISIONS		DATE
#	DESCRIPTION	

**T H E C R O S S I N G**

64452 HIGHWAY 41  
PEARL RIVER, LA 70452

JOB No: 2384 DATE: 9/15/2017

DRAWN BY: CKD/JTL CHECKED BY: BAM

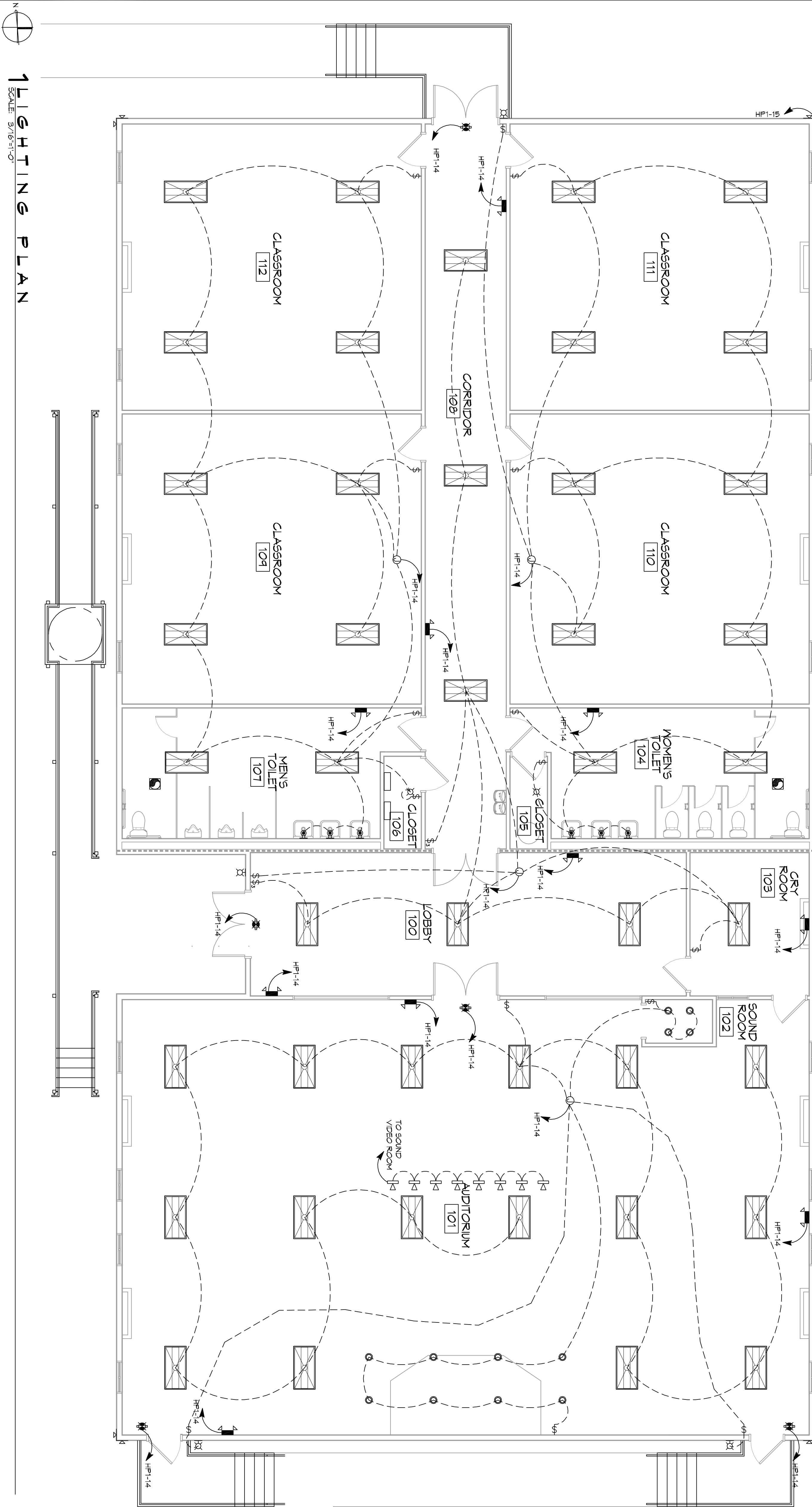
The above drawings and specifications, designs and arrangements represent the best and true and correct work of Dammon Engineering, Inc. and are the property of Dammon Engineering, Inc. and shall remain the property of Dammon Engineering, Inc. and shall be held in confidence. No part of this drawing shall be copied, reproduced, or used in connection with any work or project other than the specific project for which they have been prepared and approved without written consent of Dammon Engineering, Inc. All other uses are prohibited. Dammon Engineering, Inc. shall not be held responsible for any errors or omissions on this drawing and its contents.

SHEET TITLE:  
SITE PLAN

DRAWING NUMBER:  
**C101**

SHEET No. 3 OF 15





1 LIGHTING PLAN  
SCALE 3/16\"/>

### LEGEND

	2x4 SUSPENDED FLUORESCENT LIGHT FIXTURE (3 - 32w BULB)		CEILING MOUNTED FLUORESCENT STRIP FIXTURE (2 - 32w BULB)
	2x2 SUSPENDED FLUORESCENT LIGHT FIXTURE (2 BULB 5'w) LITHONIA 267B 3 32 A12		LED EXTERIOR MOTION LIGHT FIXTURE (2 BULB 5'w) WITH PHOTO-TRICK (240V) LITHONIA 267L2 35L A14 LP840
	DIRECTIONAL STAGE LIGHT (75w LED)		CHANDELIER LIGHT FIXTURE (6 BULB 32w TOTAL)
	EMERGENCY LIGHT FIXTURE (2w)		ELECTRIC PANEL BOARD
	EXIT LIGHT FIXTURE - WALL MOUNTED (100w)		CIRCUIT HOME RUN LIGHT SWITCH 120V COMMERCIAL GRADE
	EXIT LIGHT FIXTURE - CEILING MOUNTED (100w)		LIGHT SWITCH 3-WAY 120V COMMERCIAL GRADE
	LED WALL MOUNTED LIGHT FIXTURE WITH 40 MIN BACK-UP (75w)		LIGHT SWITCH - DIMMER 120V COMMERCIAL GRADE
	RECESSED CEILING LIGHT FIXTURE (40w)		VENT/EXHAUST FAN ONLY, SEE MECHANICAL SHEET
	WALL-MOUNTED VANITY LIGHT FIXTURE (100w)		
	CEILING MOUNTED LIGHT FIXTURE (100w)		

- ### NOTES
- ALL WORK SHALL COMPLY WITH APPLICABLE NATIONAL, STATE AND LOCAL CODES, RULES, REGULATIONS, AND REQUIREMENTS OF THE SERVICE UTILITY COMPANY.
  - REFER TO ARCHITECTURAL DRAWINGS FOR EXACT LOCATION AND MOUNTING INSTRUCTIONS FOR ALL LIGHT FIXTURES. NOTIFY THE ARCHITECT AND ENGINEER OF ANY DISCREPANCIES BETWEEN THESE PLANS AND THE ARCHITECTURAL PLANS RELATING TO QUANTITY, TYPE AND LOCATION OF DEVICES AND/OR FIXTURES.
  - WHEN SPECIFIC LIGHT FIXTURE HAS BEEN SPECIFIED IN THE FIXTURE SCHEDULE, ELECTRICAL SHALL PROVIDE COMPLETE ASSEMBLY, INCLUDING ALL PARTS AND HARDWARE TO INSURE PROPER FUNCTIONING OF THE FIXTURE.
  - ALL CONDUCTORS SHALL BE #12 AWG UNLESS NOTED OTHERWISE.
  - ALL 120V RINGS LONGER THAN 60 FEET SHALL BE #10 AWG AND 270V RINGS LONGER THAN 150 FEET SHALL BE #10 AWG UNLESS NOTED OTHERWISE.
  - ALL CONDUCTORS SHALL BE COPPER.
  - WHERE CONDUCTOR SIZES ARE NOTED ON DRAWINGS THAT ARE SIZE SHALL BE LISTED IN PARENT PARENTHESIS UNLESS OTHERWISE NOTED.
  - MOUNTED LIGHT SWITCHES 48" AFT WALLS UNLESS NOTED OTHERWISE ON DRAWINGS.
  - ALL DIMMER SWITCHES SHALL HAVE A COMMON SEMI-LEADER FACER, LITE AND DIMMER SWITCHES SHALL BE NO MORE THAN SIX (6) SWITCHES PER LOCATION. ADDITIONAL MULTI-GANGED BOXES SHALL BE STACKED VERTICALLY AND THE WIDTH OF THE MULTI-GANGES SHALL BE AS EVEN AS POSSIBLE.
  - EACH DIMMER SWITCH SHALL HAVE A WATTING RATING 25% HIGHER THAN THE TOTAL VOLTAGE OF ALL LIGHTS TO BE CONTROLLED BY THE DIMMER. DIMMER SIZES 600, 1000, 1500, AND 2000 WATTS, LITRON 30VA 120V, 120V DIMMER SWITCHES ARE GANGED WITH DIMMERS, THE 30VA 120V DIMMER SWITCHES ARE GANGED WITH DIMMERS, THE 120V DIMMER SWITCHES SHALL BE LISTED IN PARENT PARENTHESIS AND LOW VOLTAGE DIMMERS SHALL BE LISTED IN PARENT PARENTHESIS AND AS POSSIBLE.
  - WHERE FLUORESCENT FIXTURES ARE SHOWN TO BE DIMMED, THE FIXTURES SHALL HAVE DIMMING TYPE BALLASTS WHICH ARE COMPATIBLE WITH THE SPECIFIED DIMMERS.
  - WHERE LED FIXTURES/LAMPS ARE SHOWN TO BE DIMMED, THE DIMMER SHALL BE COMPATIBLE WITH THE FIXTURE/LAMP SPECIFIED OR PROVIDED.
  - ALL EMERGENCY LIGHT FIXTURES SHALL HAVE 40 MINUTE BATTERY BACKUP WITH INTEGRAL TEST BUTTON AND SHALL BURN CONTINUOUSLY.
  - ALL FLUORESCENT FIXTURES THAT UTILIZE DOUBLE-ENDED LAMPS AND CONTAIN BALLASTS SHALL BE PROVIDED WITH A DISCONNECTING MEANS IN ACCORDANCE WITH NEC 410.76.

GENERAL LIGHTING

E102

SHEET NO. 14 OF 15

DRAWING NUMBER: **E102**

SHEET TITLE: **LIGHTING PLAN**

JOB No: 2384 DATE: 9/15/2017

DRAWN BY: RLD CHECKED BY: CKD

64452 HIGHWAY 41, PEARL RIVER, LA 70492

T I L C O S S I N G

REVISIONS		DATE
#	DESCRIPTION	

# DAMMON ENGINEERING, INC.

LOUISIANA & MISSISSIPPI

Chief Engineer: Brian Mistich, PE  
554 Old Spanish Trail  
Suldel, LA 70458

www.dammonengineering.com  
info@dammonengineering.com  
PH: 985.649.5832 F: 985.641.5950