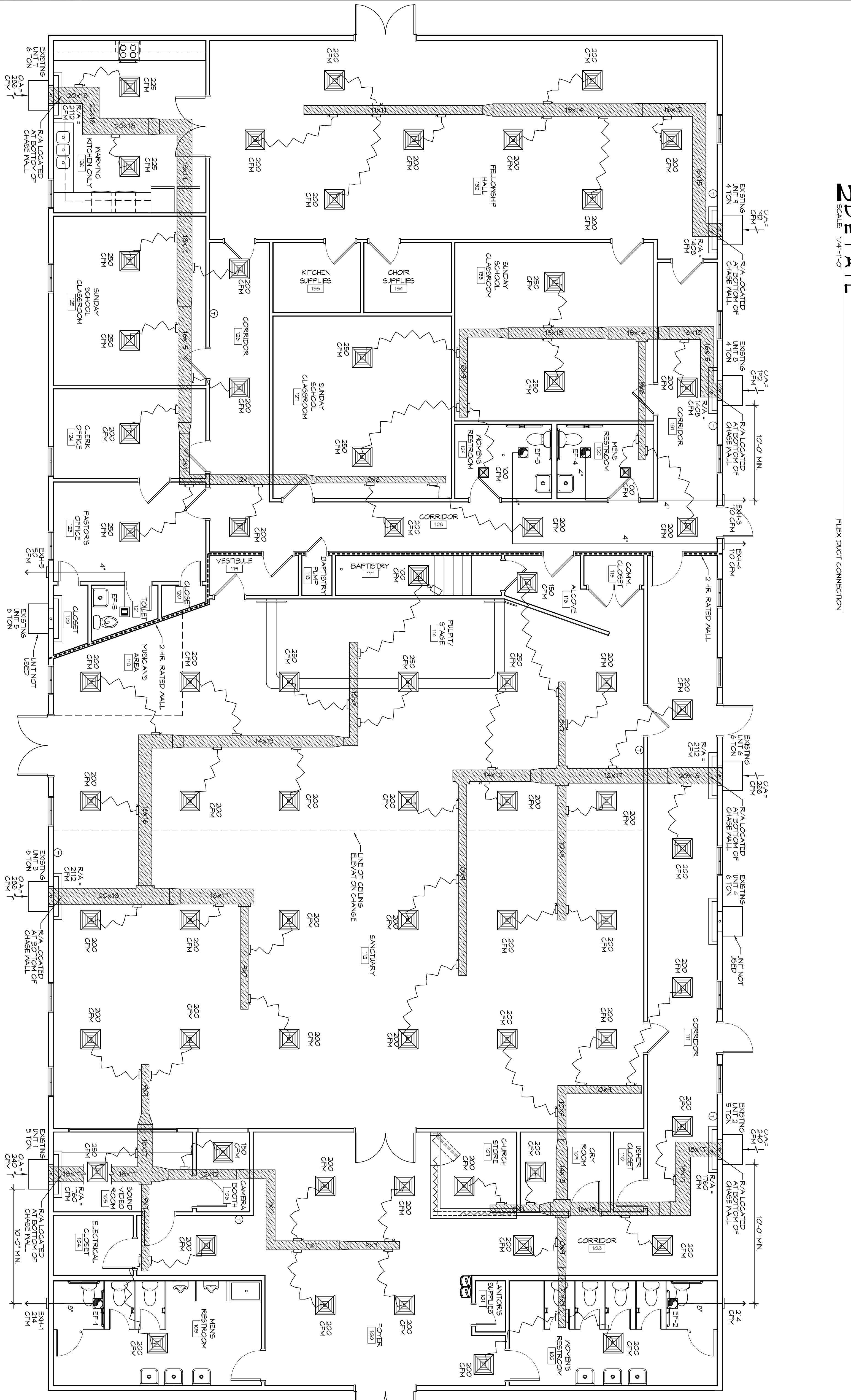
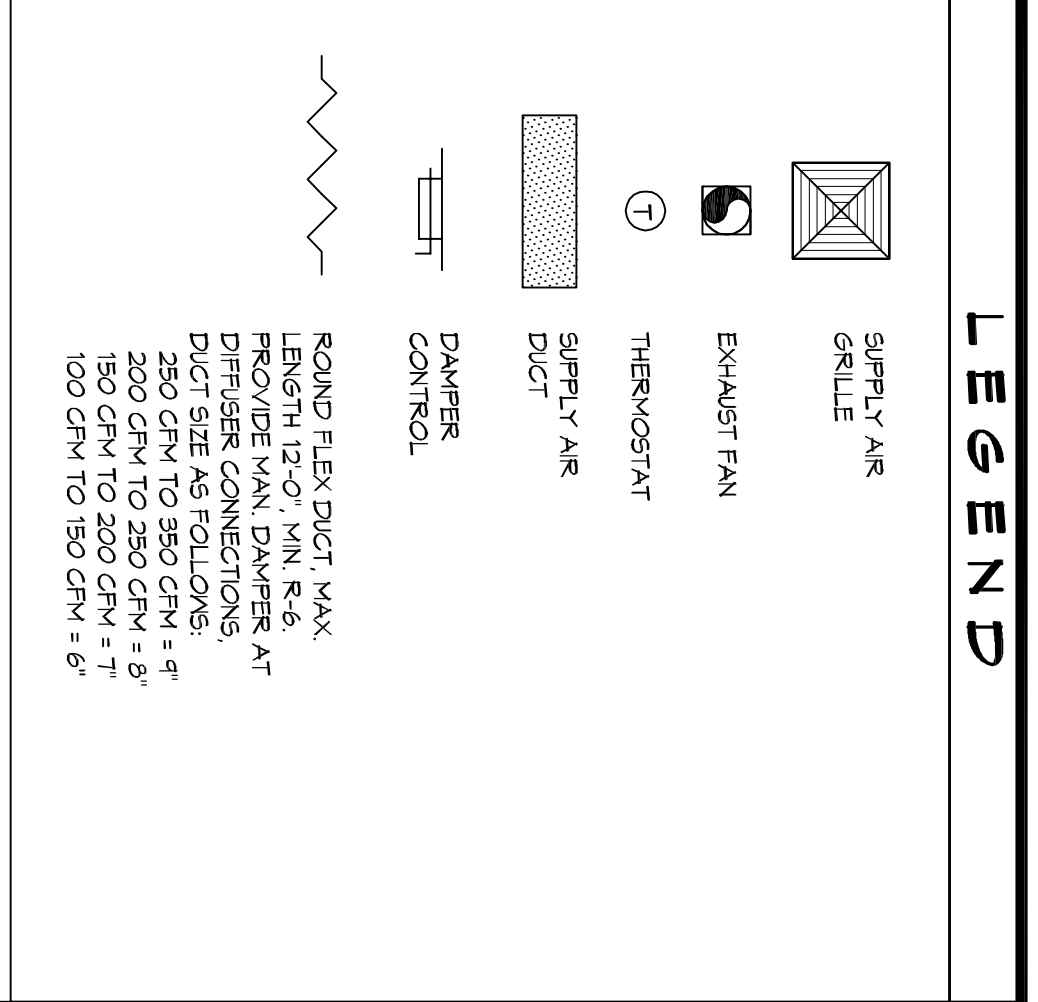


2 DETAIL
SCALE: 1/4"=1'-0"

EXHAUST FAN SCHEDULE				
FAN NO.	CFM	VOLTAGE	TYPE	RELOCATION
EF-1	214	120	VENT	BROAN L200/MEN'S RESTROOM 102
EF-2	214	120	VENT	BROAN L200/MEN'S RESTROOM 103
EF-3	110	120	VENT	BROAN XB110/MEN'S RESTROOM 124
EF-4	110	120	VENT	BROAN XB110/MEN'S RESTROOM 130
EF-5	90	120	VENT	BROAN XB90/TOLIET 121

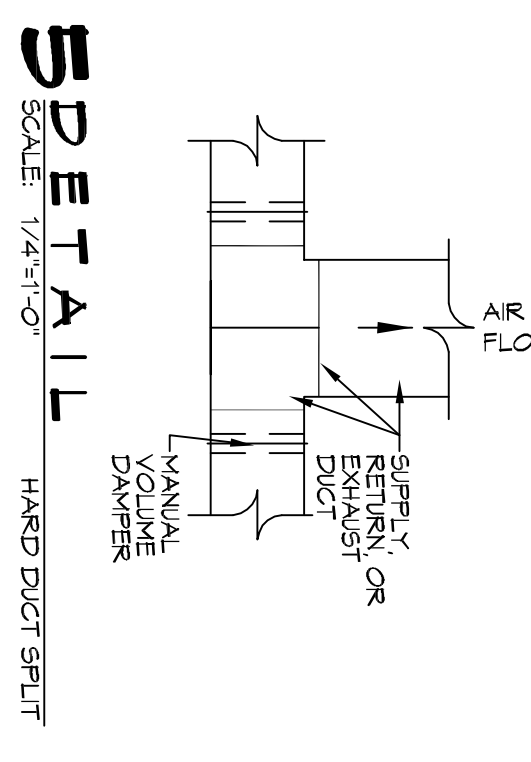
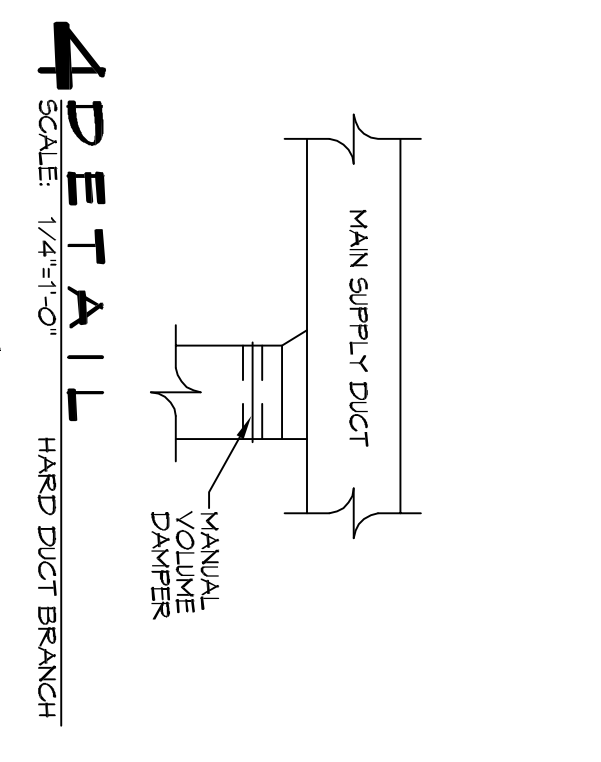
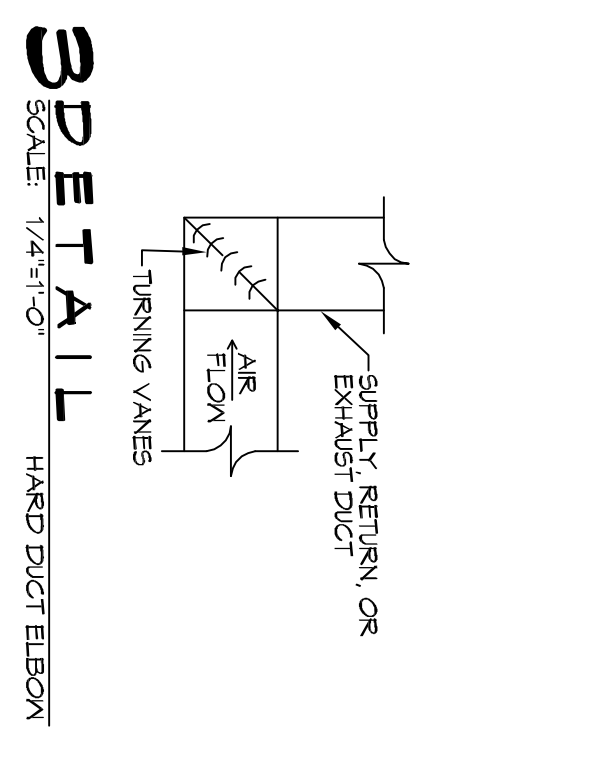
NOTE:

1. ALL FANS INSTALLED IN RATED ASSEMBLIES SHALL BE EQUIPPED W/ APPROPRIATE FIRE DAMPER TO MATCH ASSEMBLY FIRE RATING.
2. PAINT ALL SHUTTERS AND EXTERIOR GRILLES TO COLOR SPECIFICATION BY ARCHITECT.
3. PROVIDE BRGS/SCREENS ON ALL SHUTTERS AND EXTERIOR GRILLES.
4. PROVIDE BACK-FLON PREVENTER ON ALL EXHAUST SYSTEMS.



MECHANICAL HVAC NOTES

1. ALL WALL MOUNTED AIRS INTS ARE EXISTING AND ARE TO BE REISED WITH NEM DUCTWORK. ALL NEM DUCTWORK IS DRAWN DIMENSIONALLY AND SHALL BE FIELD VERIFIED PRIOR TO CONSTRUCTION AND INSTALLATION.
2. CONCEALED DUCTWORK TO BE GALVANIZED SHEET METAL LINED WITH FIBROGLASS GLASS DUCT LINER, MIN R-4. INSTALLED PER SVAANA STANDARDS.
3. EXPOSED DUCTWORK TO BE GALVANIZED SHEET METAL LINED WITH FIBROGLASS GLASS DUCT LINER, MIN R-4. INSTALLED PER SVAANA STANDARDS.
4. ROUND FLEXIBLE DUCT TO BE UL-181, CLASS 1, AIR DUCT MATERIALS, DUCT SIZES SHOWN ARE CLEAR INSIDE DIMENSIONS.
5. DUCT SIZES OVER 2000 CFM AND LESS THAN 15,000 CFM, SMOKE DETECTORS SHALL BE INSTALLED IN ACCORDANCE WITH NFPA 72E IN THE RETURN DUCT DOWNSTREAM OF THE AIR HANDLING UNIT AND ALL FILTERS TO AUTOMATICALLY STOP THE FAN.
6. PROVIDE UL LISTED 125 F° FRESH AIR RETURN AIR OR EACH SYSTEM UNDER 2000 CFM TO SHUT DOWN THE FAN IN THE EVENT OF FIRE. CONSTRUCTION SHALL BE IN ACCORDANCE WITH NFPA 72E IN THE RETURN DUCT DOWNSTREAM OF THE AIR HANDLING UNIT AND ALL FILTERS TO AUTOMATICALLY STOP THE FAN.
7. PROVIDE UL LISTED 125 F° FRESH AIR RETURN AIR OR EACH SYSTEM UNDER 2000 CFM TO SHUT DOWN THE FAN IN THE EVENT OF FIRE. CONSTRUCTION SHALL BE IN ACCORDANCE WITH NFPA 72E IN THE RETURN DUCT DOWNSTREAM OF THE AIR HANDLING UNIT AND ALL FILTERS TO AUTOMATICALLY STOP THE FAN.
8. PROVIDE UL LISTED 125 F° FRESH AIR RETURN AIR OR EACH SYSTEM UNDER 2000 CFM TO SHUT DOWN THE FAN IN THE EVENT OF FIRE. CONSTRUCTION SHALL BE IN ACCORDANCE WITH NFPA 72E IN THE RETURN DUCT DOWNSTREAM OF THE AIR HANDLING UNIT AND ALL FILTERS TO AUTOMATICALLY STOP THE FAN.
9. PROVIDE UL LISTED 125 F° FRESH AIR RETURN AIR OR EACH SYSTEM UNDER 2000 CFM TO SHUT DOWN THE FAN IN THE EVENT OF FIRE. CONSTRUCTION SHALL BE IN ACCORDANCE WITH NFPA 72E IN THE RETURN DUCT DOWNSTREAM OF THE AIR HANDLING UNIT AND ALL FILTERS TO AUTOMATICALLY STOP THE FAN.
10. ALL THERMOSTATS TO BE AUTOMATIC CHANGED OVER WITH HEAT SWITCH.
11. ALL RESTROOM EXHAUST FANS SHALL BE CONTROLLED BY A SWITCH ON THE WALL IN THE SAME LOCATION AS LIGHT SWITCHES. PROVIDE LOCAL ON/OFF SWITCH FOR EACH EXHAUST FAN.
12. PROVIDE EXHAUST FAN WITH PROPER ROOF FLASHING AND WATER PROOF SILLIE VENT IN PROPER ROOF LOCATION. PROVIDE EXHAUST FAN WITH PROPER ROOF FLASHING AND WATER PROOF SILLIE VENT IN PROPER ROOF LOCATION.
13. EXHAUST FAN SHALL BE EQUIPPED WITH AIR CONTROL DAMPERS AT THE RESTROOM.
14. FRESH AIR SHALL BE SUPPLIED TO EACH AIR HANDLER THROUGH EXTERIOR WALL DUCT SUPPLIED WITH A CONTROL DAMPER.
15. ALL ELECTRICAL, MECHANICAL, AND PLUMBING SEPARATING FIRE WALLS SHALL BE FIRE CALLED (PENETRATIONS THROUGH RATED CONSTRUCTION SHALL BE SEALED WITH A MATERIAL CAPABLE OF PREVENTING THE PASSAGE OF FLAMES AND HOT GASES WHEN TESTED IN ACCORDANCE WITH ASTM E-814).
16. ALL MECHANICAL SYMBOLS ARE DRAWN DIMENSIONALLY TO MATCH THE MANUFACTURER'S DATA SHEET.
17. FLEXIBLE DUCTWORK LENGTH NOT TO EXCEED 12'-0".
18. REFER TO REFLECTED CEILING PLAN FOR FINAL GRILLE AND DIFFUSER LOCATION AND COORDINATE AS REQUIRED.
19. FINAL LOCATION OF TEMPERATURE CONTROLS TO BE COORDINATED WITH OWNER AT JOB SITE.
20. PROVIDE UL LISTED SMOKE DETECTORS AS APPROVED BY LOCAL AHA. PLACE NEAR R/A AND S/A OPENINGS OF A/U AND PROVIDE WITH ACCESS PANEL. R/WING BY ELECTRICAL CONTRACTOR IF REQUIRED.
21. FRESH AIR INTAKES ARE REQUIRED TO HAVE NOTICED OR GRAVITY DAMPERS TO SHUT OFF WHEN SYSTEM IS NOT RUNNING.
22. PROVIDE BIRD SCREENS AT ALL EXTERIOR MECHANICAL PENETRATIONS.
23. CONTRACTOR SHALL PROVIDE A VEANS FOR ATTIC VENTILATION FOR THE MOVEMENT OF AIR ABOVE/DROP CEILING(S) EITHER BY MECHANICAL VENTS OR POWER VENTS.



DAMMON ENGINEERING, INC.
LOUISIANA & MISSISSIPPI

Chief Engineer: Brian Mistich, PE
554 Old Spanish Trail
Sudell, LA 70458

www.dammonengineering.com
info@dammonengineering.com
PH: 985.649.5832 F: 985.641.5950

#	DESCRIPTION	REVISIONS	DATE

Missing or invalid stamps
File: P:\Stamps
Sheet: 1

M101

MECHANICAL PLAN

DRAWING NUMBER: M101

3770 LEGGETT ROAD
SLIDELL, LA 70460

JOB No: 2295 DATE: 9/15/2017
DRAWN BY: JTL CHECKED BY: BAM