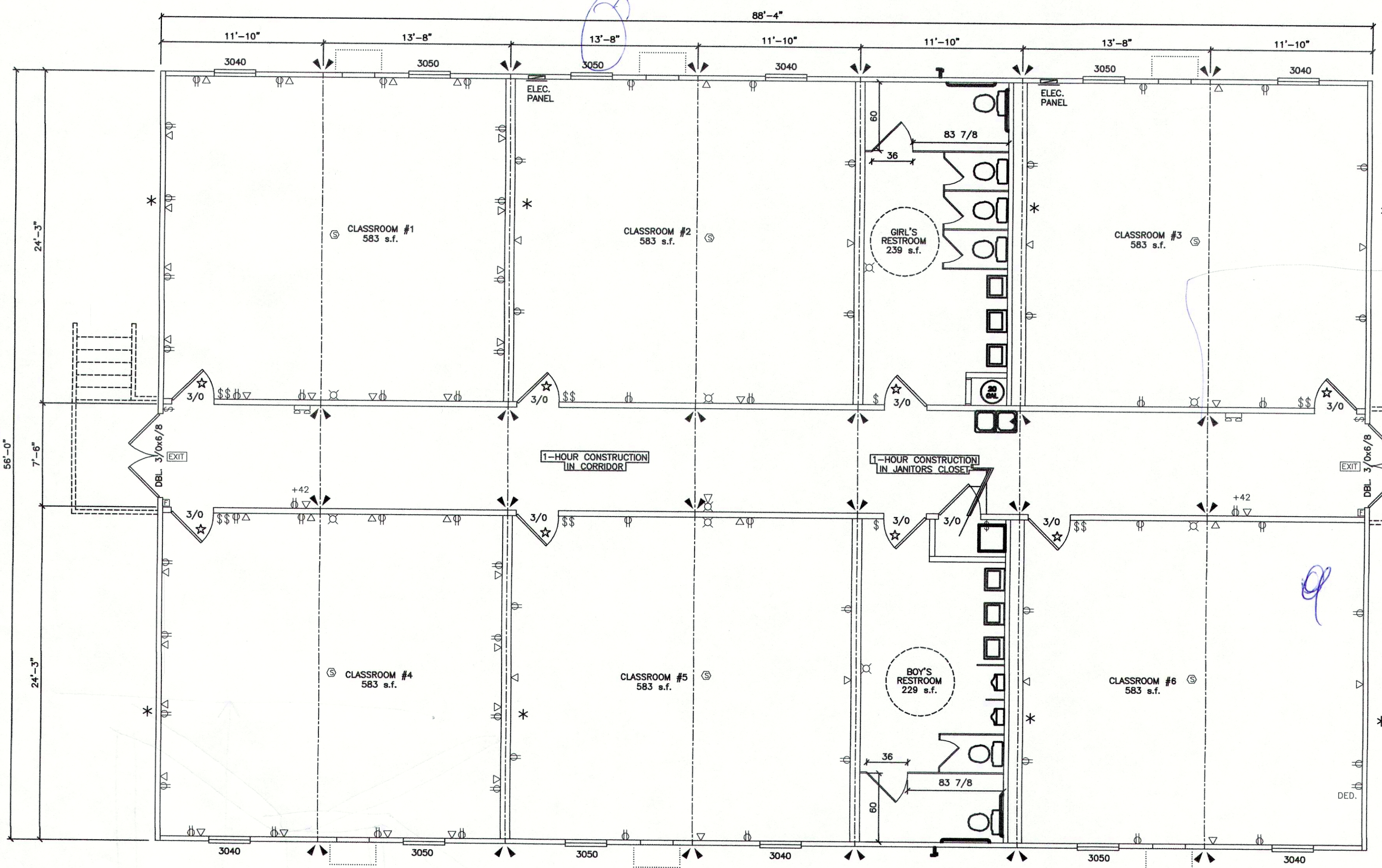


57 RAP  
30" Helicoid  
8-0.C.

2x8 Trusses  
8.0.C.

16' x 10"  
10' x 10"  
8' x 16"  
2 BLOCKS

Two  
more  
124-44



SYMBOL LEGEND	
	24" x 48" FLUORESCENT LIGHT
	SWITCH
	RECEPTACLE
	DEDICATED RECEPTACLE
	PHONE STUB-IN
	EXHAUST FAN
	LIGHTED EXIT SIGN W/ BATTERY BACK-UP
	EMERGENCY LIGHT W/ BATTERY BACK-UP
	ALARM PULL STATION AT 48" A.F.F.
	ALARM HORN/STROBE AT 80" A.F.F.
	ALARM STROBE AT 80" A.F.F.
	SMOKE DETECTOR

DOOR SCHEDULE					
CALLOUT	NOMINAL SIZE	MATERIAL	HARDWARE	GLASS	NOTES
DBL 3/0x6/8	6'-0" x 6'-8"	20ga. STEEL DOOR	PULL/PANIC	6" x 27"	KEYED ALIKE
3/0	3'-0" x 6'-8"	PRE-FINISHED SOLID CORE	LEVER/LEVER	6" x 27"	KEYED INDIVIDUALLY

WINDOW SCHEDULE			
CALLOUT	NOMINAL SIZE	LIGHT	VENT
3040	36" x 48"	10.51	5.25
3050	36" x 60"	13.34	6.67

BRONZE FINISH WITH CLEAR SINGLE GLAZE

☆ - DENOTES 20 Min. DOOR REQUIRED  
 \* - DENOTES SHEAR WALL LOCATION  
 ▴ - DENOTES 3-EA. 2x4's AND 1-EA. 3" WIDE x 26ga. STRAP AT MATE-LINE FASTENED W/ 14 DUO-FAST #138 NAILS EACH END OF EACH STRAP, OR 11 DUO-FAST #25 NAILS EACH END OF EACH STRAP.

LTR	REVISION	BY	DATE	DRAWN BY:	PROJECT:	TITLE:	DATE:	COMARK BUILDING SYSTEMS, INC.
A	20 GAL. W/H	B.S.	6/14/99	B.S.	CLASSROOM BUILDING HIGHLAND BAPTIST CHRISTIAN SCHOOL NEW IBERIA, LA.	FLOOR PLAN	5/21/99	
				CHECKED BY:	SCALE:	DWG. NO.	SHEET	© 1999, COMARK BUILDING SYSTEMS, INC. All Rights Reserved.
					1/8" = 1'-0"	5688HBCS	A-2	