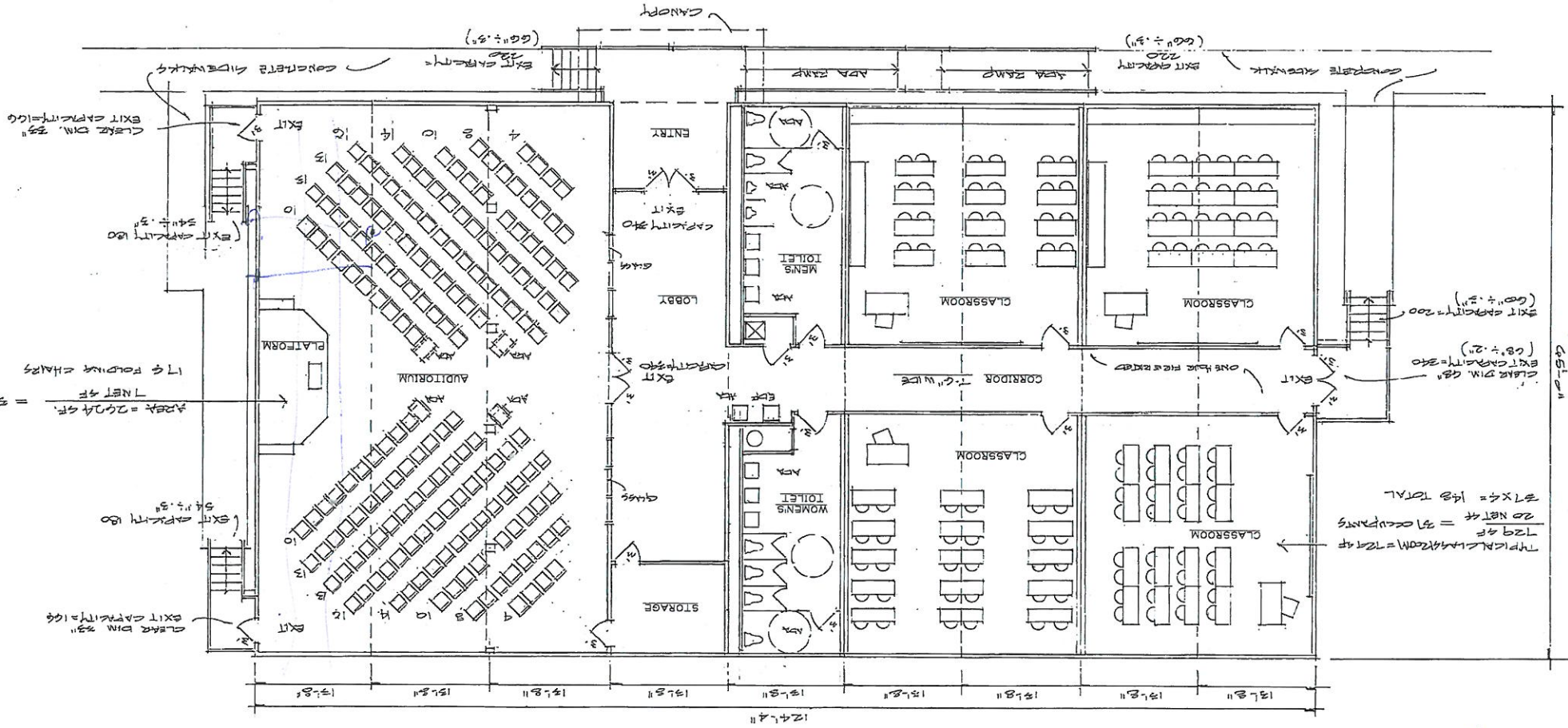
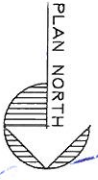


OCCUPANT LOAD AND EXITING PLAN STUDY

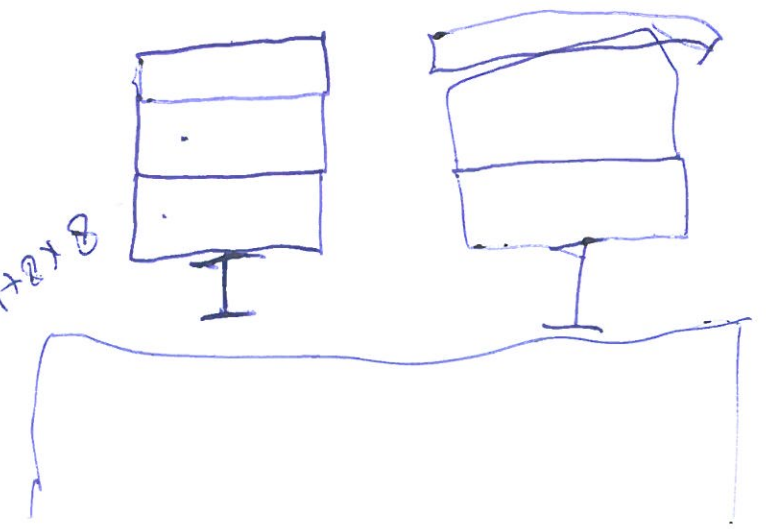
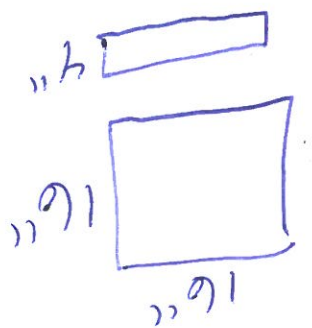
PROPOSED MODULAR CLASSROOM BUILDING FIRST FLOOR PLAN



Jobs - Churches - The Center - waiting folder - The St. 101



SCALE: 1/8"=1'-0"



*San Hasser
300 Buttanut Dr.
51 Bell LA
70458
985-502-6819
The Crossing*

8'-0" x 16'5" x 1'

SHEET NO
A1.0

DATE
June 24, 2008
DRAWN BY
HDD
CHECKED BY
HDD

REVISIONS

COMMISSION

PROPOSED MODULAR
CLASSROOM BUILDING
84452 LA HIGHWAY 41
PEARL RIVER, LOUISIANA 70482

DUPLANTIER & MERIC, ARCHITECTS, L.L.C.
4764 PARIS AVENUE NEW ORLEANS, LA 70122
EMAIL: ARCHITECTS@DUMERARCH.COM PHONE: 504-324-9874 FAX: 504-371-9139

SCALE: 1/8"=1'-0"

