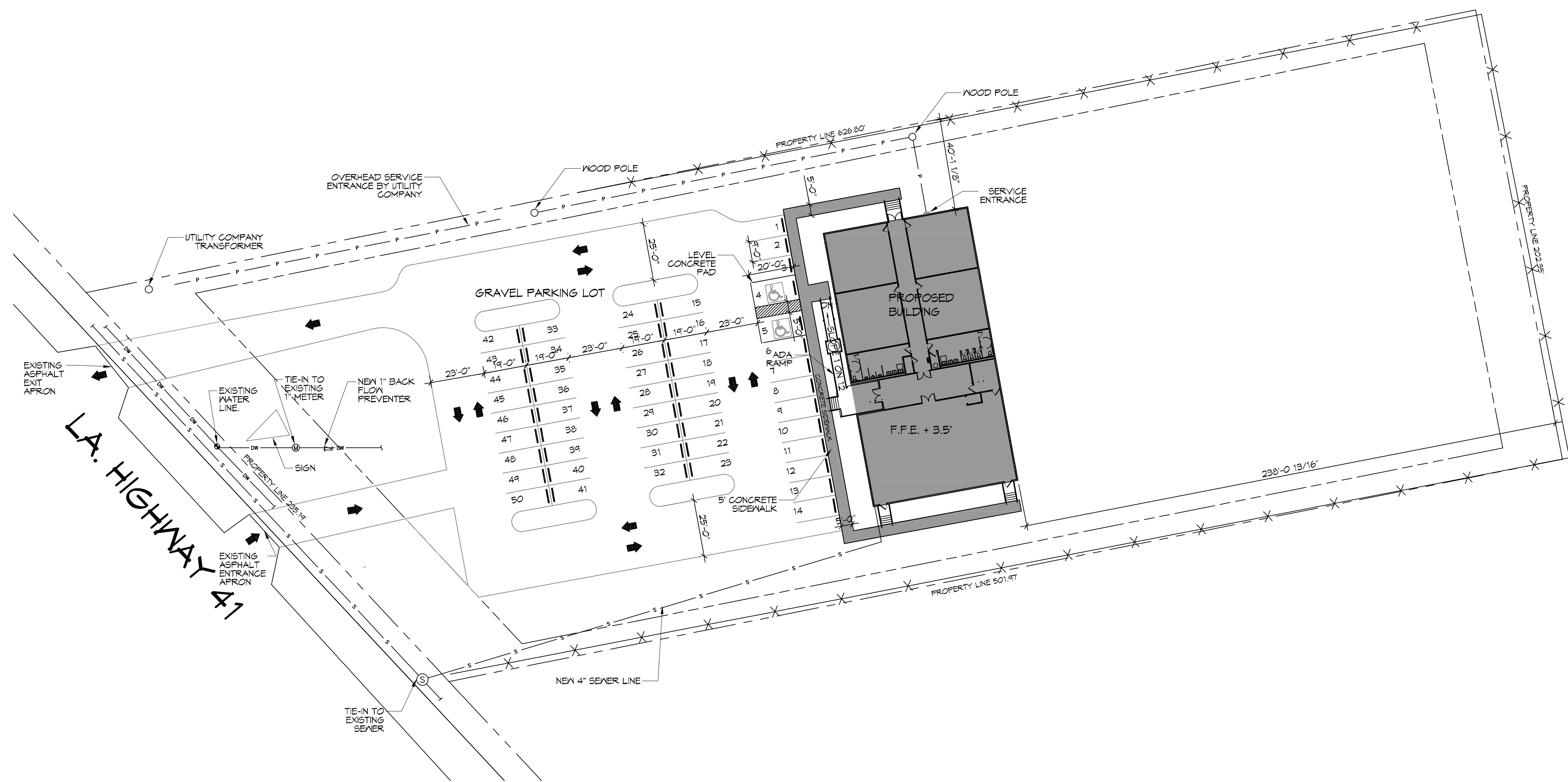


THE LAMAR...
 11/05/2018
 11/05/2018



N
SITE PLAN
 SCALE: 1" = 30'
 NEW SITE

PLANNING
ZONED 'B2' HAY COMMERCIAL
FLOOD ZONE
ZONE 'X'
BUILDING SETBACK LINES
FRONT - 35' SIDES - 10' REAR - 25'
BUILDING ELEVATION
BASE FLOOD ELEVATION = 0' FINISHED FLOOR ELEVATION = -3.5'
PARKING
1 SPACE PER 4 OCCUPANTS 176 SEATS / 4 = 44 PARKING SPACES REQUIRED 2 HANDICAP PARKING SPACES PROVIDED 48 REGULAR PARKING SPACES PROVIDED TOTAL PARKING SPACES PROVIDED 50
SITE LIGHTING
EXTERIOR LIGHTING SHALL BE SHADED OR INWARDLY DIRECTED IN SUCH A MANNER SO THAT NO DIRECT LIGHTING OR GLARE BE CAST BEYOND THE PROPERTY LINE. THE INTENSITY OF SUCH LIGHTING SHALL NOT EXCEED ONE FOOT CANDLE AS MEASURED AT THE ABUTTING PROPERTY LINE.

REVISIONS	DATE	
	DESCRIPTION	

#	DESCRIPTION	DATE

THE CROSSING
 64452 HIGHWAY 41,
 PEARL RIVER, LA 70452
 JOB No: 2804 DATE: 11/05/2018
 DRAWN BY: JUS
 RLD / CHECKED BY:

SHEET TITLE:
 SITE PLAN
 DRAWING NUMBER:
C101
 SHEET No: 3 of 13

DAMMON
ENGINEERING, INC.
 LOUISIANA & MISSISSIPPI
 Chief Engineer: Brian Mitch, PE
 594 Old Spanish Trail
 Slidell, LA 70468
 www.dammonengineering.com
 info@dammonengineering.com
 PH: 985.649.2382, F: 985.649.2980

