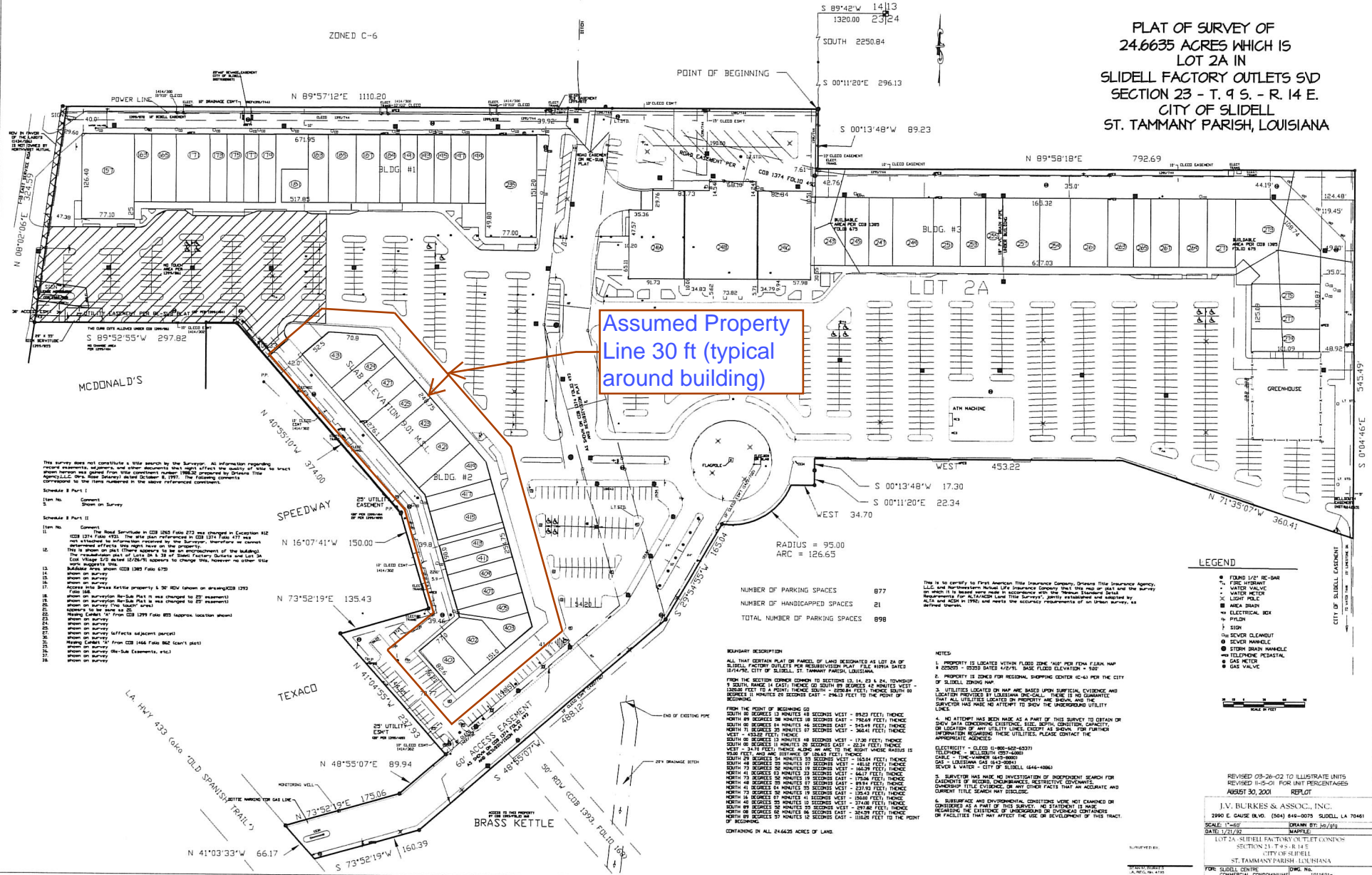


ZONED C-6

PLAT OF SURVEY OF 24.6635 ACRES WHICH IS LOT 2A IN SLIDELL FACTORY OUTLETS SVD SECTION 23 - T. 9 S. - R. 14 E. CITY OF SLIDELL ST. TAMMANY PARISH, LOUISIANA



Assumed Property Line 30 ft (typical around building)

This survey does not constitute a title search by the Surveyor. All information regarding present easements, mortgages, and other documents that might affect the quality of title to the tract is shown on this plat. The Surveyor is not responsible for the accuracy of the information shown on this plat. The Surveyor is not responsible for the accuracy of the information shown on this plat. The Surveyor is not responsible for the accuracy of the information shown on this plat.

NUMBER OF PARKING SPACES 877
NUMBER OF HANDICAPPED SPACES 21
TOTAL NUMBER OF PARKING SPACES 898

EXHAUST DESCRIPTION
ALL THAT CERTAIN PLAT or PARCEL OF LAND DESIGNATED AS LOT 2A OF SLIDELL FACTORY OUTLETS SVD REVISIONS PLAT FILE WITH MAPS 1874790, CITY OF SLIDELL, ST. TAMMANY PARISH, LOUISIANA.

This is to certify to First American Title Insurance Company, Orleans Title Insurance Agency, L.L.C. and Metropolitan Surety Bond Agency, L.L.C. that the survey was made in accordance with the 'Minimum Standards' of the Surveying and Mapping Board of Louisiana. The Surveyor is not responsible for the accuracy of the information shown on this plat.

- LEGEND
* FOUND 1/2" OR BEAR
* UTILITY
* WATER METER
* FENCE
* AREA DRAIN
* ELECTRICAL BOX
* SIGN
* SEVER CLEARED
* SEVER HAZARDOUS
* STEEP DRAIN HAZARDOUS
* GAS METER
* GAS VALVE



REVISION 03-26-02 TO ILLUSTRATE UNITS
REVISED 11-03-03 FOR UNIT PERCENTAGES
AGREED 30, 2001 REPLIT
J.V. BURKES & ASSOC., INC.
2990 E. CHASE BLVD. (504) 840-0070 SLIDELL, LA 70461
DATE: 1/21/02 DRAWN BY: JVB/BJB
LOT 2A, SLIDELL FACTORY OUTLETS SVD
SECTION 23, T. 9 S., R. 14 E.
CITY OF SLIDELL
ST. TAMMANY PARISH, LOUISIANA
FOR: SLIDELL CENTRE DWG. NO.
COMMERCIAL DEVELOPMENT 1016718