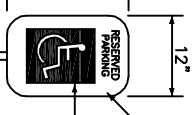


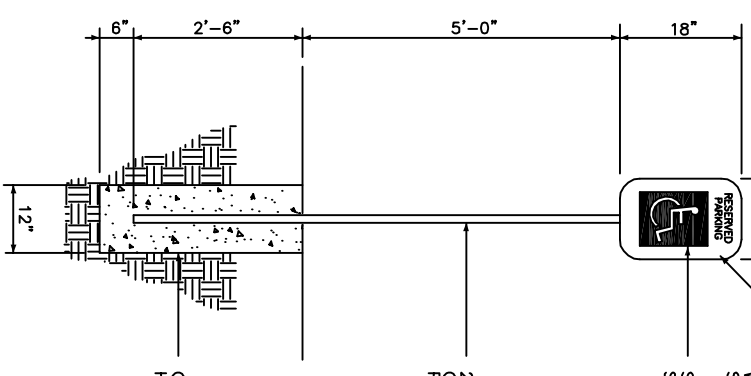
NOTE:
SIGNAGE SHALL COMPLY
WITH SIGNAGE GUIDELINES



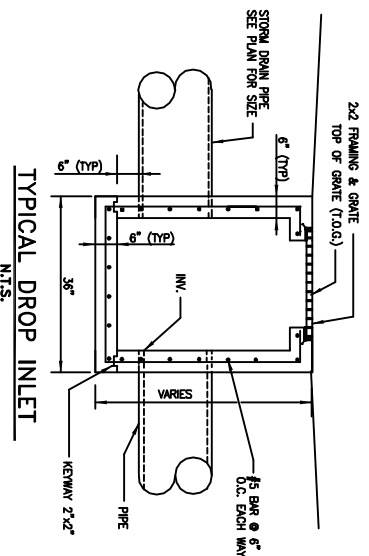
9 GA. SHEET METAL MOUNT
WITH 3 CHROME ROUND HEAD
SCREWS (WHITE BACKGROUND)
SILK SCREEN INTERNATIONAL H.C.
SYMBOL (WHITE ON BLUE BACKGROUND)

2x2 STEEL TUBE,
CLOSE TOP END AND GRIND SMOOTH,
PAINT WHITE

CONC. BASE TO BE CENTER ON
H.C. PARKING SPACE. TYP.



HANDICAP SIGN
N.T.S. (1/4" = 1')



TYPICAL DROP INLET
N.T.S.

CLASSIFICATION

STORAGE, TESTING, REPAIRING OR SIMILAR SERVICE USES.

AREAS

BUILDING #1 AUTO BODY SHOP	6 CUSTOMER PARKING SPACES
TOTAL	6000 SQ. FT.
BUILDING #2 OFFICE FACILITY	1500 SQ. FT./350=5 PARKING SPACES
TOTAL	1500 SQ. FT.

PARKING REQUIREMENTS

6 CUSTOMER PARKING SPACES
PLUS ONE SPACE PER 350 S.F. OF OFFICE.
TOTAL SPACES REQUIRED 11.

PARKING PROVIDED

10 REGULAR SPACES
+1 HANDICAP SPACES
11 TOTAL SPACES PROVIDED

Trees and Shrubs to be of types indicated below or similar from list of qualified species

Tree and Plant Schedule

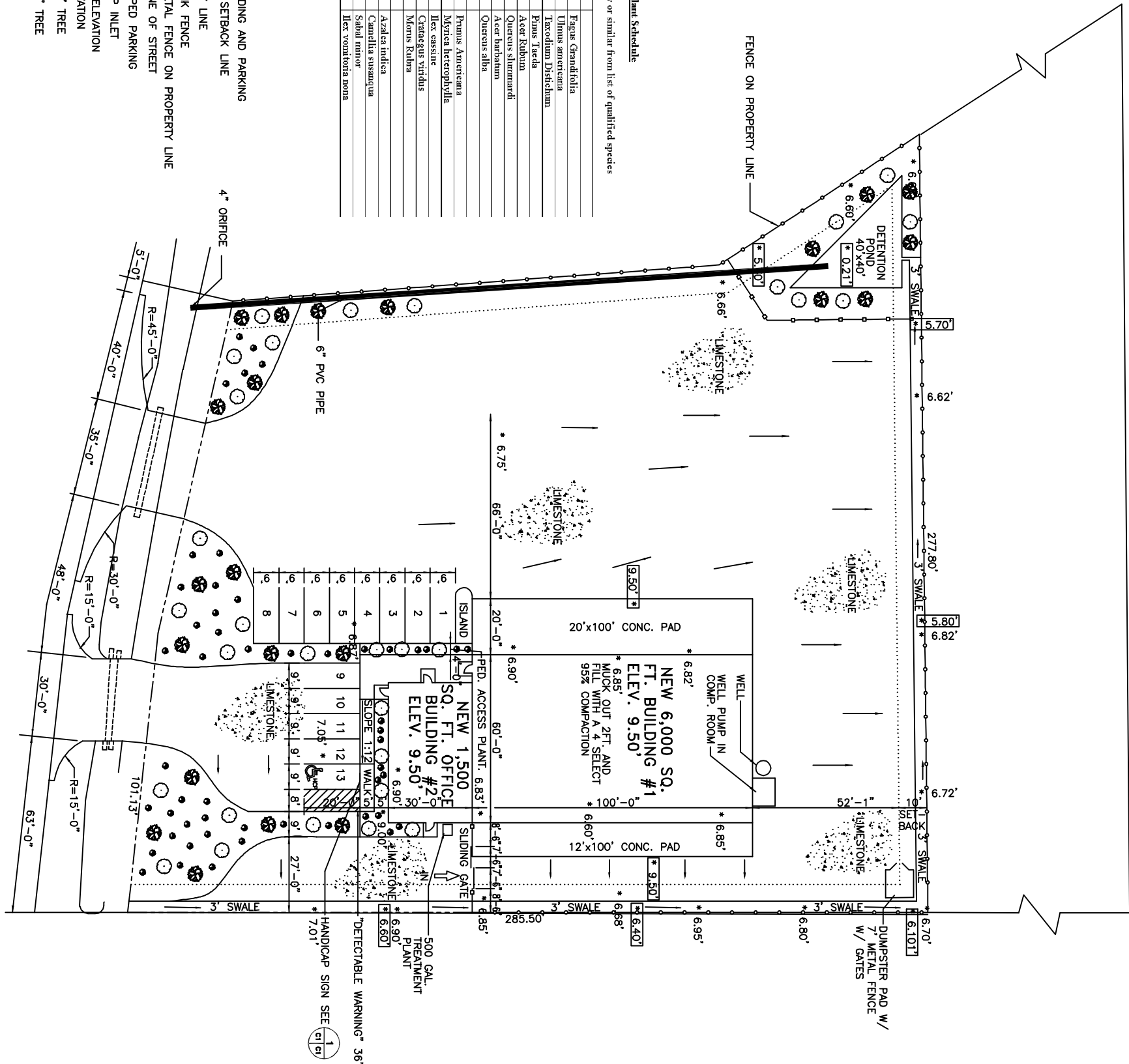
Class A Trees	Class B Trees
American Beech	Fagus grandifolia
American Sycamore	Ulmus americana
Bald Cypress	Taxodium distichum
Loblolly Pine	Pinus taeda
Red Maple	Acer rubrum
Shumard Oak	Quercus shumardi
Southern Sugar Maple	Acer barbatum
Willow Oak	Quercus alba
Class B Trees	Class B Plants
American Plum	Prunus americana
Big Leaf Wax Myrtle	Myrica heterophylla
Deodandus Holly	Ilex cassine
Greenhaw	Ceanothus virginicus
Red Mulberry	Morus rubra
Shrubs	Shrubs
Azalea	Azalea indica
Camelia	Camellia susanqua
Palmetto	Sabal minor
Dwarf Yucca	Ilex vomitoria nana

LEGEND

- NEW BUILDING AND PARKING
- BUILDING SETBACK LINE
- PROPERTY LINE
- CHAIN LINK FENCE
- SHEET METAL FENCE ON PROPERTY LINE
- CENTERLINE OF STREET
- HANDICAPPED PARKING
- NEW DROP INLET
- * 0.00' - EXISTING ELEVATION
- * 0.000' - NEW ELEVATION
- CLASS "A" TREE
- CLASS "B" TREE
- SHRUB

NOTES:

1. HANDICAP PARKING SIGNAGE SHALL NOT BE OBSCURED BY VEHICLES.
2. PERSONS IN WHEELCHAIRS SHALL NOT BE REQUIRED TO PASS BEHIND PARKED VEHICLES.



OLD SPANISH TRAIL

SITE PLAN
SCALE: 1" = 20'

REVISED 03-28-04

SITE PLAN
CHARLIE MAXWELL
OLD SPANISH TRAIL
SLIDELL, LOUISIANA

ON SITE
DAMMON ENGINEERING, INC.
ARCHITECTS - ENGINEERS
2000 OLD SPANISH TRAIL, STE 100 985-649-5832 SLIDELL, LA. 70458
DAMMONENGINEERING.COM

SCALE: AS NOTED
FILE:
JOB NO.
DATE: 11-7-03
SHEET
C-1
OF