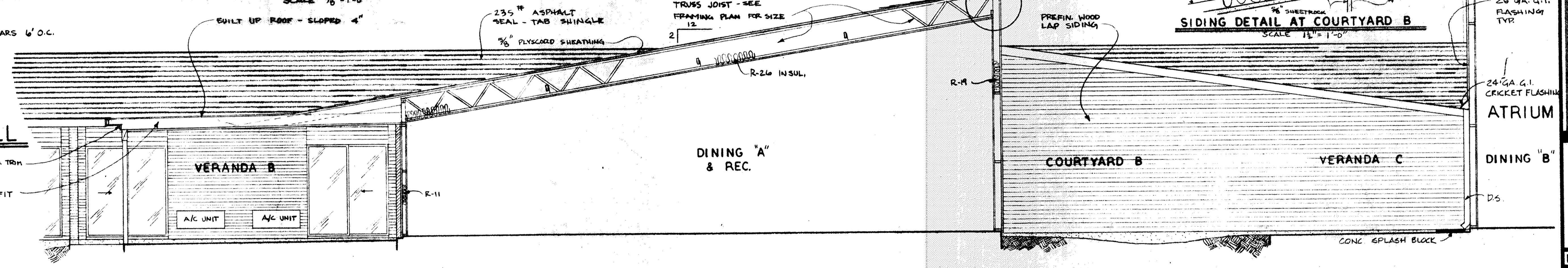
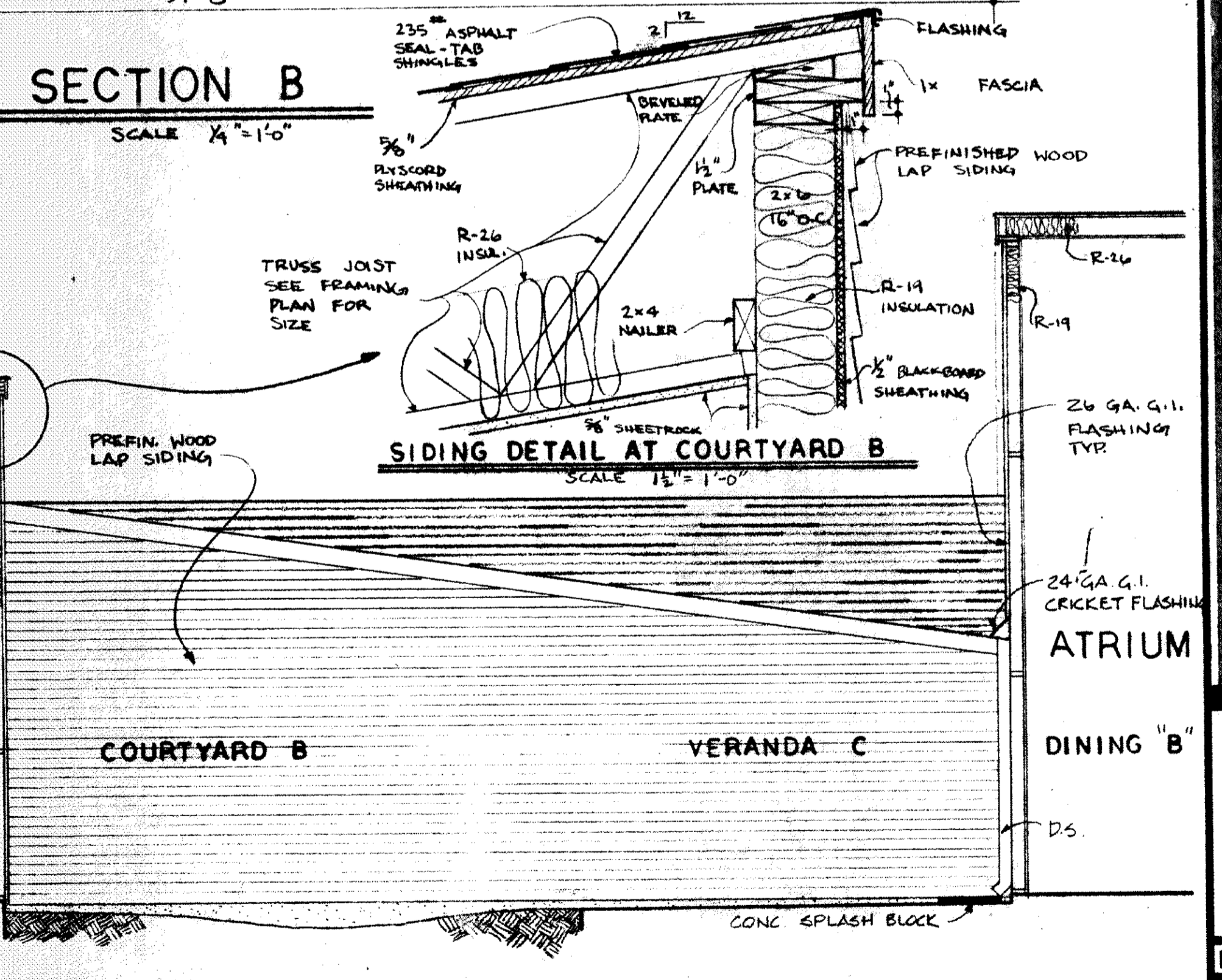
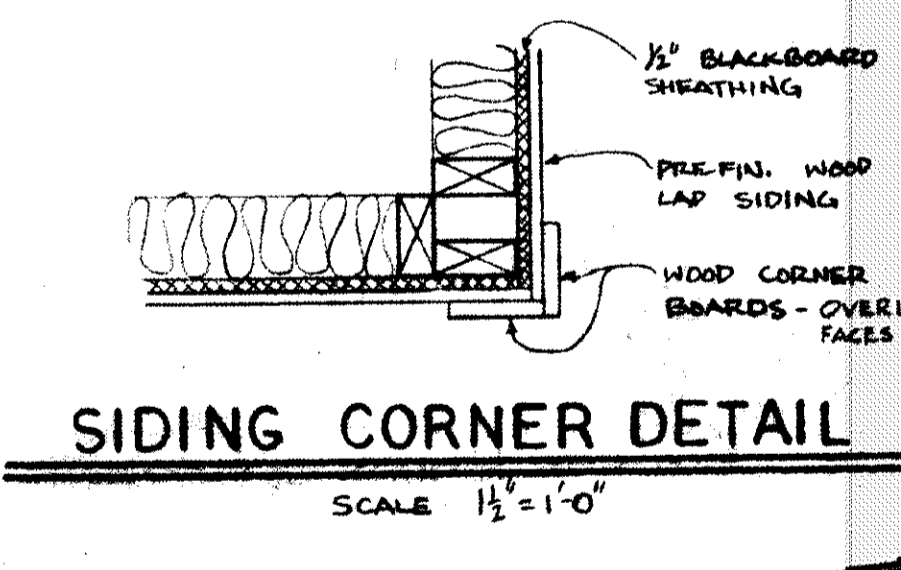
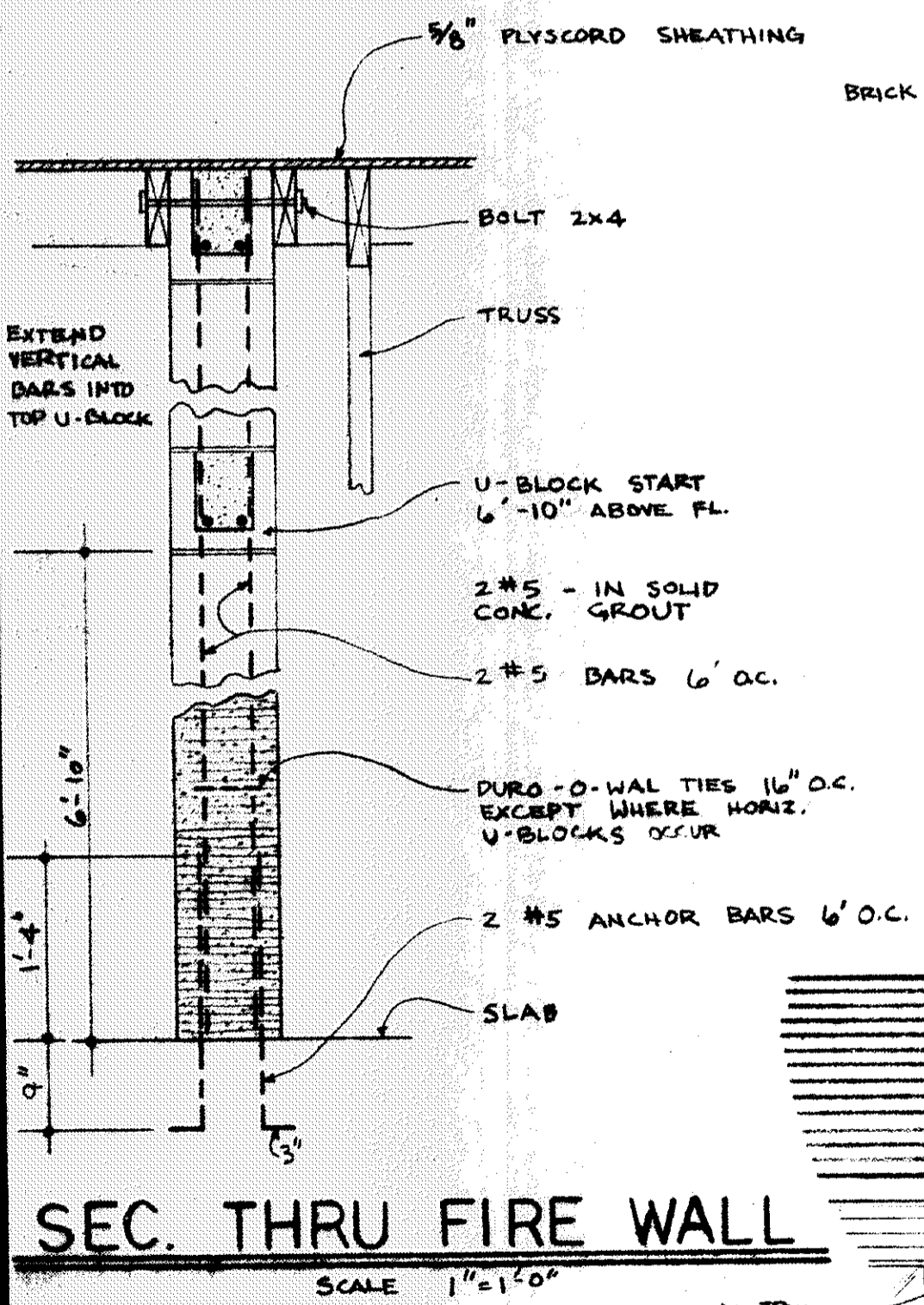
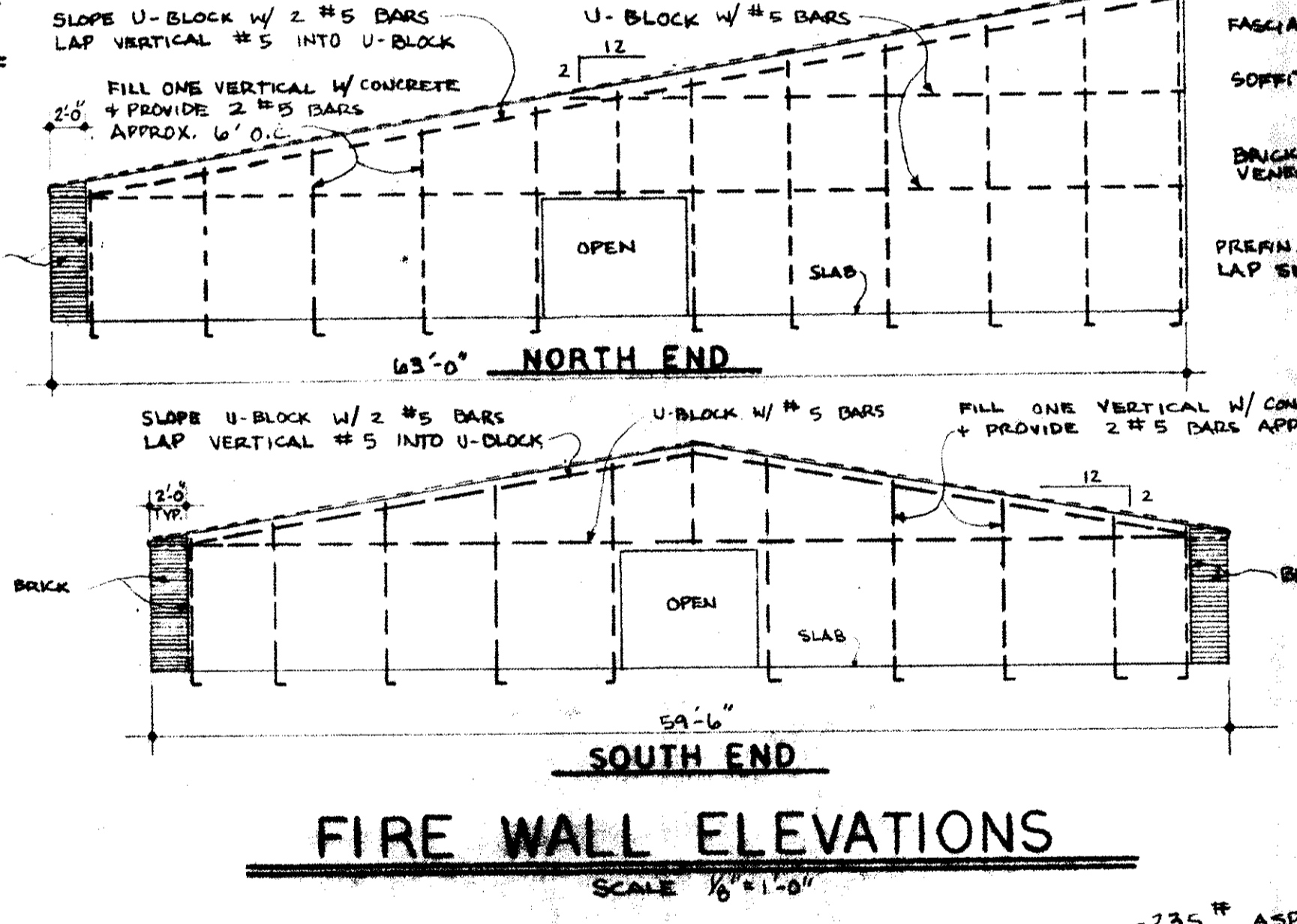
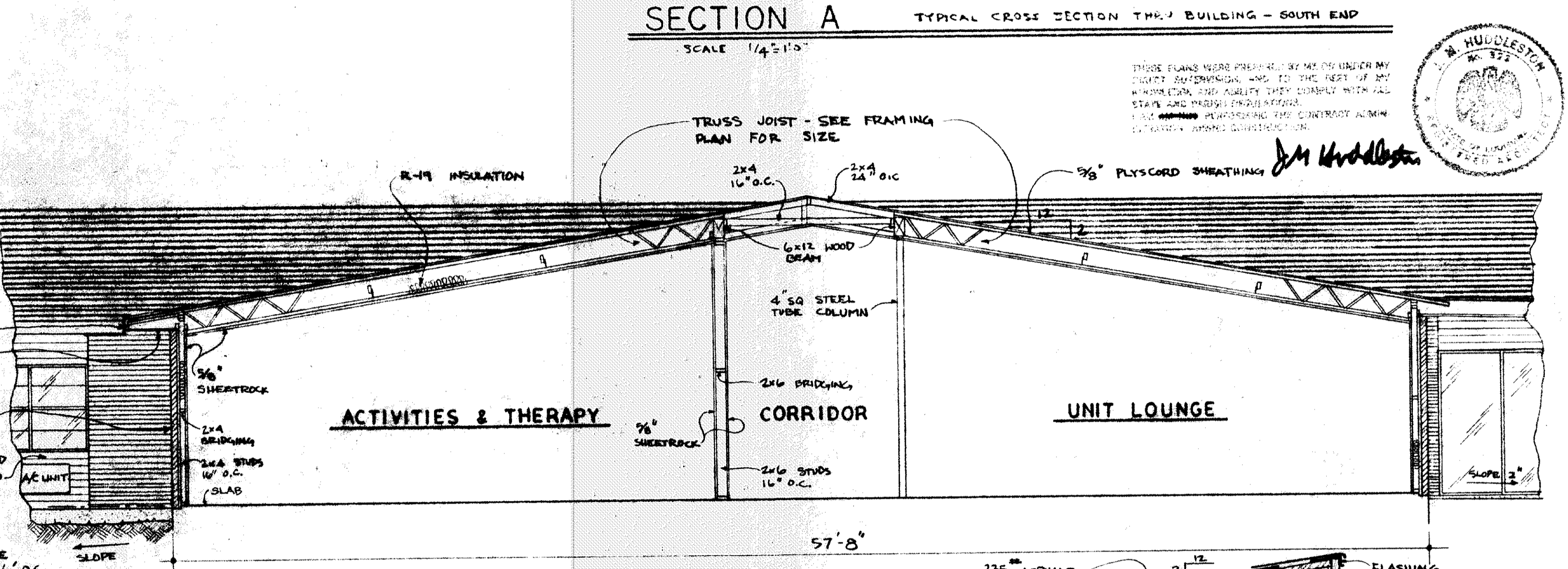
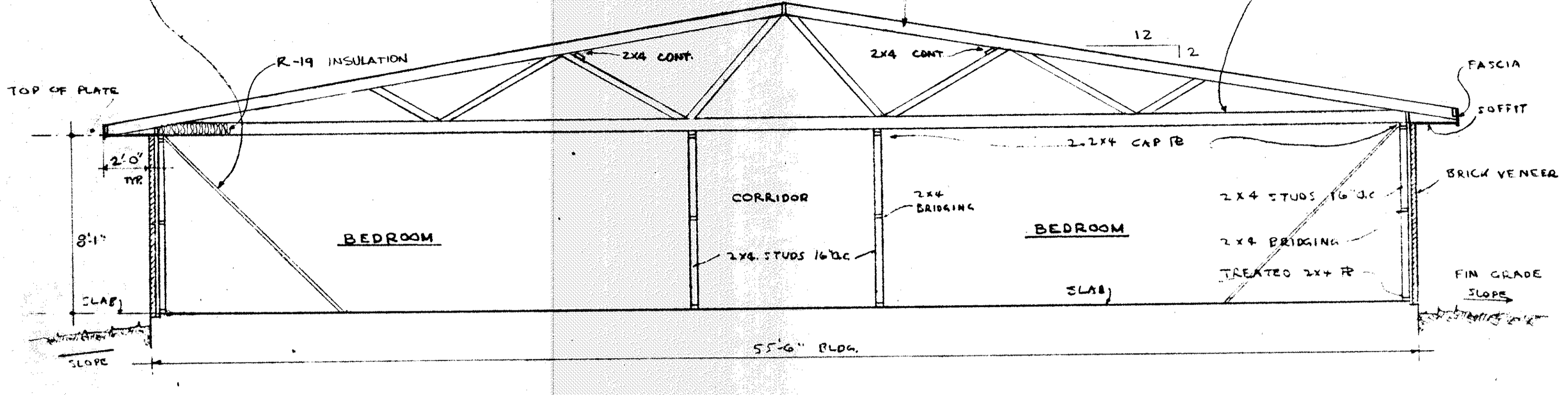


PERFORATED METAL BRACING STRAPS AT 45° ANGLE ONE SIDE OF STUDS AT EACH PARTITION, APPROX. 12" ON CENTER - NAIL WITH NOT LESS THAN 10 D NAILS.



HUDDLESTON & WHITE ARCHITECTS - ENGINEERS
2601 N. HULLEN ST. METairie, LA 70002
J. M. HUDDLESTON, AIA (504) 887-5250
WILLIAM H. WHITE, P.E. (504) 334-4618