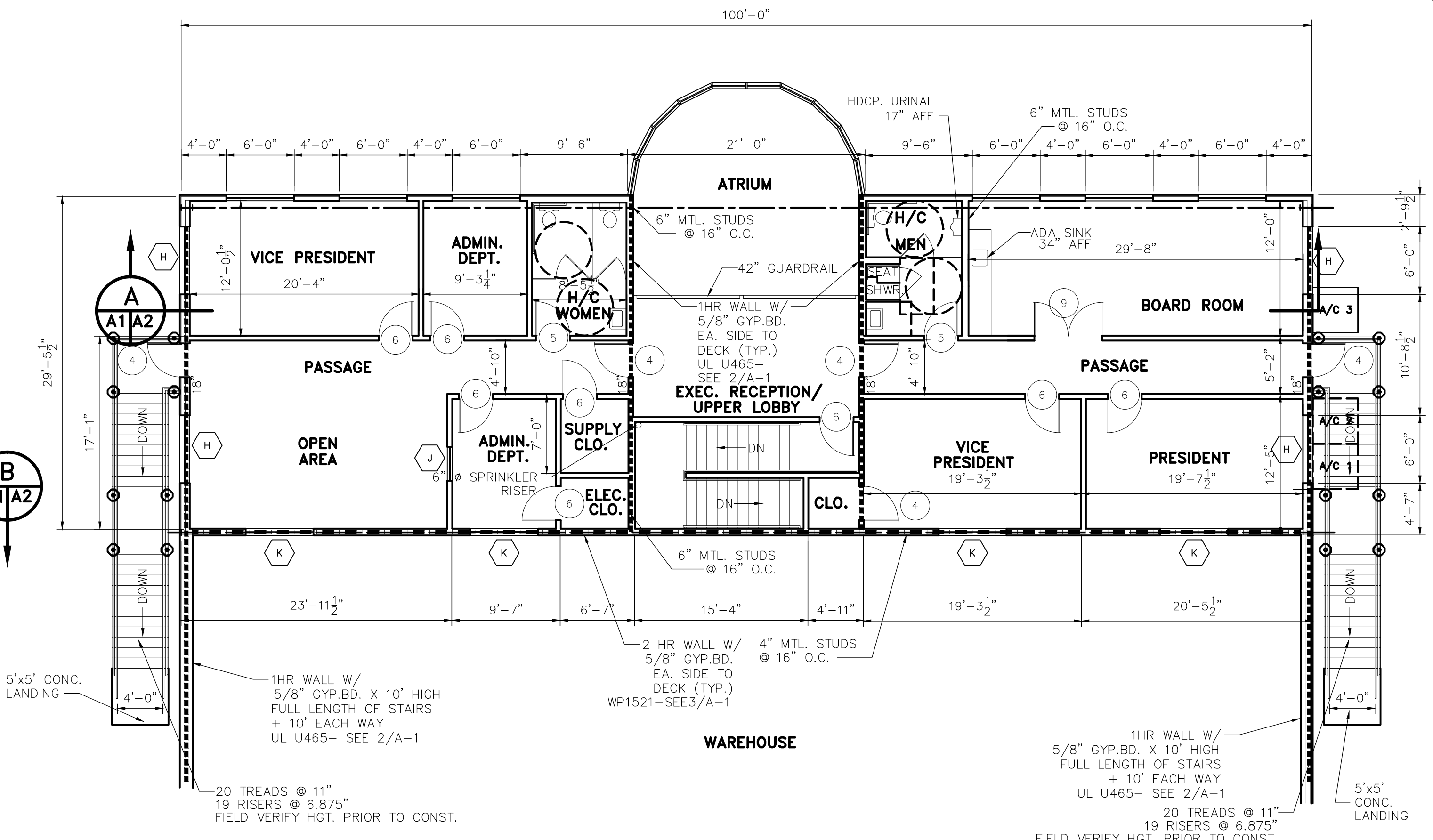


FIRST FLOOR PLAN
SCALE: 1/8"=1'-0"

GA FILE NO. WP 1521 **GENERIC**

GYPSUM WALLBOARD, STEEL STUDS
BASE LAYER 5/8" TYPE X GYPSUM WALLBOARD OR GYPSUM VENEER
BASE APPLIED PARALLEL TO EACH SIDE OF 3 5/8" STEEL STUDS
24" O.C. WITH 1" TYPE S DRYWALL SCREWS 24" O.C. FACE LAYER
1/2" TYPE X GYPSUM WALLBOARD OR GYPSUM VENEER BASE
APPLIED PARALLEL TO EACH SIDE WITH 1 5/8" TYPE S DRYWALL
SCREWS 12" O.C.
JOINTS STAGGERED 24" EACH LAYER AND SIDE. SOUND TESTED
WITH 3 1/2" GLASS FIBER FRICTION FIT IN STUD SPACE (NLB).
THICKNESS:
LIMITING HEIGHT:
APPROX. WEIGHT:
FIRE TEST:
SOUND TEST:
5 5/8"
REFER TO SECTION V
9 PSF
SEE WP 1545
(UC 9-7-64;
ULC 807499, 3-26-81
ULC DESIGN W414
NRC 815-NV, 2-3-81

2 HR. FIRE WALL (WP 1521) (3)

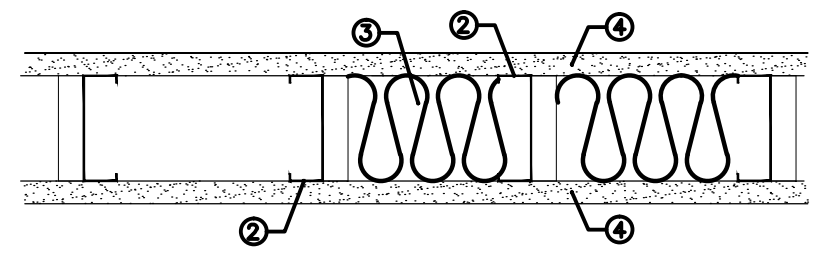


SECOND FLOOR PLAN
SCALE: 1/8"=1'-0"

LEGEND

1HR WALL - UL 465 - SEE 3/A-3
2HR WALL - WP 1521 - SEE 4/A-3	-----

DESIGN NO. U465
NONBEARING WALL RATING- 1 HR.



- FLOOR AND CEILING RUNNERS**- (NOT SHOWN)- CHANNEL SHAPED RUNNERS, 3 5/8 IN. WIDE (MIN), 1 1/4 IN. LEGS, FORMED FROM MIN NO. 25 MSG (MIN NO. 20 MSG WHEN ITEM 4C IS USED) GALV STEEL, ATTACHED TO FLOOR AND CEILING WITH FASTENERS SPACED 24 IN. O.C. MAX.
- STEEL STUDS**- CHANNEL SHAPED, 3 5/8 IN. WIDE (MIN.), 1 1/4 IN. LEGS, 3/8 IN. FOLDED BACK RETURNS FORMED FROM MIN. NO. 25 MSG (MIN. NO. 20 MSG WHEN ITEM 4A IS USED) GALV STEEL SPACED 24 IN. O.C. MAX.
- BATTS AND BLANKETS**- (OPTIONAL)- MINERAL WOOL OR GLASS FIBER BATTS PARTIALLY OR COMPLETELY FILLING STUD CAVITY.
- FIBER SPRAYED**- AS AN ALTERNATE TO BATTS AND BLANKETS (ITEM 3)- SPRAY APPLIED CELLULOSE INSULATION MATERIAL. THE FIBER IS APPLIED WITH WATER TO COMPLETELY FILL THE ENCLOSED CAVITY IN ACCORDANCE WITH THE APPLICATION INSTRUCTIONS SUPPLIED WITH THE PRODUCT. NOMINAL DRY DENSITY OF 3.0 LB/FT. US GREENFIBER L. L. C. COCCUIN STABILIZED CELLULOSE INSULATION.
- FIBER SPRAYED**- AS AN ALTERNATE TO BATTS AND BLANKETS (ITEM 3) AND AND ITEM 3A- SPRAY APPLIED CELLULOSE INSULATION MATERIAL. THE FIBER IS APPLIED WITH WATER TO INTERIOR SURFACES IN ACCORDANCE WITH THE APPLICATION INSTRUCTIONS SUPPLIED WITH THE PRODUCT. APPLIED TO COMPLETELY FILL THE ENCLOSED CAVITY. MINIMUM DRY DENSITY OF 4.3 POUNDS PER CUBIC FOOT. NU-WOOL CO., INC. CELLULOSE INSULATION.
- GYPSUM BOARD**- 5/8 IN. THICK, 4 FT. WIDE, ATTACHED TO STEEL STUDS AND FLOOR AND CEILING TRACK WITH 1 IN. LONG, TYPE S STEEL SCREWS SPACED 8 IN. O.C. ALONG EDGES OF BOARD AND 12 IN. O.C. IN THE FIELD OF THE BOARD. JOINTS ORIENTED VERTICALLY AND STAGGERED ON OPPOSITE SIDES OF THE ASSEMBLY. WHEN ATTACHED TO ITEM 6 (RESILIENT CHANNELS) OR 6A (FURRING CHANNELS) WALLBOARD IS SCREW ATTACHED TO FURRING CHANNELS WITH 1 IN. LONG, TYPE S STEEL SCREWS SPACED 12 IN. O.C. AMERICAN GYPSUM CO.- TYPES AG-C, AGX-C. BEIJING NEW BUILDING MATERIALS CO., LTD. TYPE DBX-1. BFB OF AMERICA, INC.- TYPES 1, EORG, PRO ROC TYPE X, PRO ROC TYPE C. CANADIAN GYPSUM COMPANY- TYPES AR, C, IP-AR, IP-X2, IPC-AR, SCX, SHX, WRC OR WRX. G-P GYPSUM CORP. SUB OF GEORGIA-PACIFIC CORP.- TYPES 5, 9 C, DAP, DD, DA, DGG, DS, GPF56. LAFARGE NORTH AMERICA, INC.- TYPES LGFC2, LGFC2A, LGFC6, LGFC6A, LGFC-C, LGFC-C/A. NATIONAL GYPSUM CO.- TYPES FSK-C, FSK-G, FSW-C, FSW-G, FSW. NORGIPS A/S- NORFIRE XA. PABCO GYPSUM, DIV OF PACIFIC COAST BUILDING PRODUCTS, INC.- TYPE PG-C. SIAM GYPSUM INDUSTRY CO., LTD.- TYPE EX-1. STANDARD GYPSUM L. L. C.- TYPE SG-C. TEMPLE-INLAND FOREST PRODUCTS CORP.- TYPE TG-C. UNITED STATES GYPSUM CO.- TYPE AR, C FRX-G, IP-AR, IP-X2, IPC-AR, SCX, SHX, WRC OR WRX. USG MEXICO S A DE C V- TYPE AR, C IP-AR, IP-X2, IPC-AR, SCX, SHX, WRC OR WRX. WESTROCK, INC.- TYPE WESTROCK FI-ROK OR ABUSE-RESISTANT.
- GYPSUM BOARD**- (AS AN ALTERNATE TO ITEM 4)- NOM 5/8 THICK GYPSUM PANELS WITH BEVELED, SQUARE OR TAPERED EDGES, APPLIED VERTICALLY OR HORIZONTALLY. VERTICAL JOINTS CENTERED OVER STUDS AND STAGGERED ONE STUD CAVITY ON OPPOSITE SIDES OF STUDS. HORIZONTAL JOINTS AND HORIZONTAL BUTT JOINTS ON OPPOSITE SIDES OF STUDS NEED NOT BE STAGGERED OR BACKED. PANELS ATTACHED TO STEEL STUDS AND FLOOR RUNNER WITH 1 IN. LONG TYPE S STEEL SCREWS SPACED 8 IN. O.C. ALONG VERTICAL AND BOTTOM EDGES AND 12 IN. O.C. IN THE FIELD WHEN PANELS ARE APPLIED VERTICALLY. CANADIAN GYPSUM COMPANY- TYPES AR, C, IP-AR, IP-X2, IPC-AR, SCX, SHX, WRC OR WRX. UNITED STATES GYPSUM CO.- TYPE AR, C FRX-G, IP-AR, IP-X2, IPC-AR, SCX, SHX, WRC OR WRX. USG MEXICO S A DE C V- TYPE AR, C, IP-AR, IP-X2, IPC-AR, SCX, SHX, WRC OR WRX.
- GYPSUM BOARD**- (AS AN ALTERNATE TO ITEMS 4, 4A AND 4B)- 5/8 IN. THICK GYPSUM PANELS INSTALLED AS DESCRIBED IN ITEM 4A WITH TYPE S-12 STEEL SCREWS. THE LENGTH AND SPACING OF THE SCREWS AS SPECIFIED UNDER ITEM 4A.
- JOINT TAPE AND COMPOUND**- VINYL DRY OR PREMIXED JOINT COMPOUND, APPLIED IN TWO COATS TO JOINTS AND SCREW HEADS; PAPER TAPE 2 IN. WIDE, EMBEDDED IN FIRST LAYER OF COMPOUND OVER ALL JOINTS. AS AN ALTERNATE, NOMINAL 3/32 IN. THICK GYPSUM VENEER PLASTER MAY BE APPLIED TO THE ENTIRE SURFACE OF CLASSIFIED VENEER BASEBOARD. JOINTS REINFORCED.
- RESILIENT CHANNEL**- (OPTIONAL, NOT SHOWN)- 25 MSG GALV STEEL RESILIENT CHANNELS SPACED VERTICALLY MAX 24 IN. O.C., FLANGE PORTION ATTACHED TO EACH INTERSECTING STUD WITH 1/2 IN. LONG TYPE 2-12 PANHEAD STEEL SCREWS. NOT FOR USE WITH TYPE FRX GYPSUM PANELS.
- STEEL FRAMING MEMBERS** (NOT SHOWN)- AS AN ALTERNATE TO ITEM 3, FURRING CHANNELS AND RESILIENT SOUND ISOLATION CLIP AS DESCRIBED BELOW.
- FURRING CHANNELS**- FORMED NO. 25 MSG GALV STEEL. 2 3/8 IN. WIDE X 7/8 DEEP, SPACED 24 IN. O.C. PERPENDICULAR TO STUDS. CHANNELS SECURED TO STUDS AS DESCRIBED IN ITEM B.
- STEEL FRAMING MEMBERS**- USED TO ATTACH FURRING CHANNELS (ITEM A) TO STUDS (ITEM 1). CLIPS SPACED 48 IN. O.C. AND SECURED TO STUDS WITH 1 5/8 IN. WAFER OR HEX HEAD TYPE S STEEL SCREW THROUGH THE CENTER GROMMET. FURRING CHANNELS ARE FRICTION FITTED INTO CLIPS. PAC INTERNATIONAL INC.- TYPE RSIC-1. *BEARING THE UL CLASSIFICATION MARK.

1 HR. FIRE WALL- UL U465 (2)

REVISED: 04-04-06

FLOOR PLAN
PLATFORM CRANE SERVICE
DOSS DRIVE
SLIDELL, LOUISIANA

OFFICE/WAREHOUSE
DAMMON ENGINEERING, INC.
1095 FLORIDA AVENUE 985-649-5632 SLIDELL, LA. 70458
DAMMONENGINEERING.COM

SCALE: AS NOTED

FILE:

JOB NO. 1655

DATE: 04-07-05

SHEET

A-1
OF