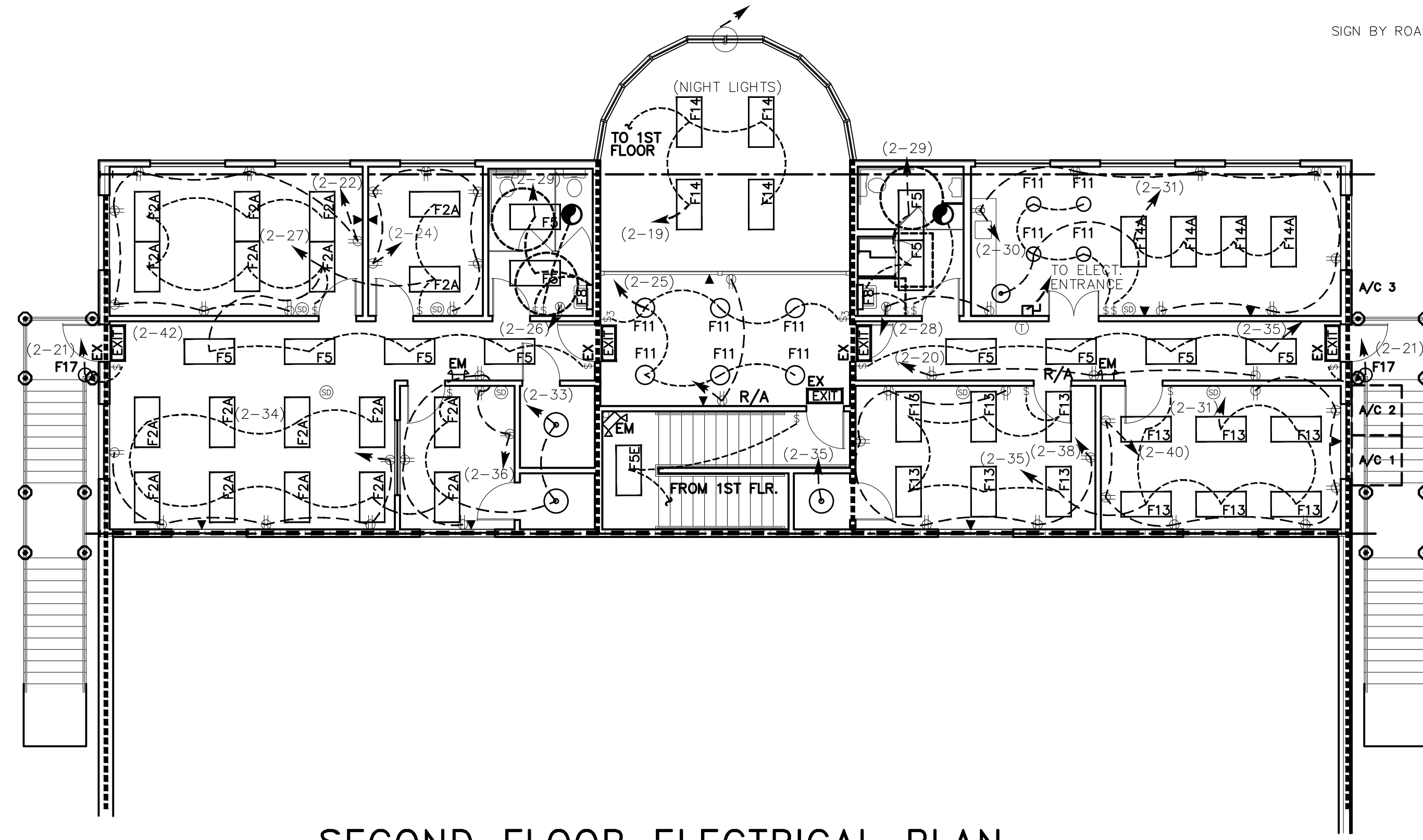


FIRST FLOOR ELECTRICAL PLAN

SCALE: 1/8"=1'-0"



SECOND FLOOR ELECTRICAL PLAN

SCALE: 1/8"=1'-0"

LEGEND

- ⊞ - SWITCH
- ⊞ - THREE-WAY SWITCH
- ⊞ - DUPLEX OUTLET
- ⊞ - GFI OUTLET
- ⊞ - WEATHERPROOF OUTLET
- ⊞ - OVEN OUTLET
- ⊞ - LIGHT
- ⊞ - VENT
- ⊞ - 2 X 2 FLUORESCENT LIGHT
- ⊞ - RECESSED CAN LIGHT
- ⊞ - ILLUM. EXIT SIGN - CLG. MOUNTED W/ 90 MIN. BACKUP
- ⊞ - PULL CHAIN LIGHT
- ⊞ - EXTERIOR LIGHT W/ 90 MIN. BATTERY BACKUP
- ⊞ - TELEPHONE/COMPUTER/CABLE TV
- ⊞ - POWER PANEL
- ⊞ - SMOKE DETECTOR-U.L. #285 WIRED TO 110V. CIRCUIT
- ⊞ - THERMOSTAT
- ⊞ - JUNCTION BOX
- ⊞ - DISCONNECT SWITCH
- ⊞ - HOT WATER HEATER WITH DISCONNECT SWITCH
- ⊞ - EMERGENCY LIGHT W/ 90 MIN BACKUP
- ⊞ - FLUORESCENT WALL MOUNTED OR CABINET MOUNTED LIGHT
- ⊞ - 250V HPS HIGH BAY LIGHT
- ⊞ - METAL HALIDE EXTERIOR LIGHT (BUILDING EXTERIOR SIDES)
- ⊞ - METAL HALIDE EXTERIOR FLOOD LIGHT (BUILDING FRONT)

ELECTRICAL NOTES

1. ALL WORK SHALL CONFORM TO THE LATEST EDITION OF THE NATIONAL ELECTRICAL CODE, THE GOVERNING ELECTRICAL CODE, AND ALL OTHER INSPECTION DEPARTMENTS HAVING JURISDICTION. OBTAIN CERTIFICATES OR APPROVAL WHERE REQUIRED.
2. ALL MATERIALS FURNISHED SHALL BE NEW AND SHALL BE U.L. LISTED.
3. THE DRAWINGS INDICATE SIZE AND GENERAL LOCATION OF WORK. SCALE DIMENSIONS SHALL NOT BE USED. THE EXACT LOCATION AND ELEVATION OF ALL LIGHTING FIXTURES, RECEPTACLES AND TELEPHONE OUTLETS, ETC. SHALL BE DETERMINED BY ACTUAL CONDITIONS IN THE FIELD, UNLESS NOTED OTHERWISE.
4. PRIOR TO BIDDING, CONTRACTOR SHALL VISIT THE JOB SITE AND FAMILIARIZE THEMSELVES WITH THE EXISTING CONDITIONS.
5. ELECTRICAL CONTRACTOR SHALL COORDINATE HIS WORK WITH OTHER TRADES AND WITH OTHER CONTRACTORS WHOSE WORK MAY AFFECT THIS INSTALLATION.
6. ELECTRICAL CONTRACTOR SHALL COORDINATE INCOMING ELECTRICAL SERVICE WITH UTILITY COMPANY AND INCLUDE IN HIS BID ALL CHARGES AND FEES INCURRED IN MODIFICATIONS.
7. WHERE MORE THAN ONE SWITCH OCCURS IN THE SAME LOCATION, THEY SHALL BE INSTALLED IN A GANG TYPE BOX UNDER ONE COVER PLATE.
8. ELECTRICAL CONTRACTOR SHALL COORDINATE THE TELEPHONE INSTALLATION WITH THE TELEPHONE COMPANY AND THE GENERAL CONTRACTOR.
9. ELECTRICAL CONTRACTOR, BEFORE INSTALLING ANY OF THE WORK, SHALL SEE THAT IT DOES NOT INTERFERE WITH CLEARANCES REQUIRED FOR FINISHED COLUMNS, HUNG CEILINGS, PLASTER, PARTITIONS, WALLS, ETC. AS SHOWN IN THE ARCHITECTURAL DRAWINGS AND DETAILS. IF ANY WORK IS INSTALLED AND IT LATER DEVELOPS THAT SUCH DETAILS OR DESIGN CANNOT BE FOLLOWED, THE CONTRACTOR, AT HIS OWN EXPENSE, SHALL MAKE SUCH CHANGES IN THE WORK AS DIRECTED BY THE ARCHITECT, AS WELL AS TO PERMIT THE INSTALLATION OF THE ARCHITECTURAL WORK AS SHOWN ON THE PLANS AND DETAILS.
10. PERFORM TEST REQUIRED BY THE OWNER OR THE ENGINEER IN CONNECTION WITH THE OPERATION OF THE ELECTRICAL SYSTEM IN THE BUILDING.
11. ALL TESTS SHALL BE MADE IN ACCORDANCE WITH THE LATEST STANDARD OF THE IEEE AND THE NATIONAL ELECTRICAL CODE.
12. MINIMUM CONDUCTOR SIZE SHALL BE #12, 600V INSULATION. MINIMUM SIZE CONDUIT SHALL BE 3/4" EMT FOR INTERIOR USE, AND 3/4" RIGID ALUMINUM FOR EXTERIOR USE. USE TYPE NMC CABLE IN CONTROL RM BLDG. FOR LIGHTS & RECEPTACLE CIRCUITS. EXTERIOR FITTINGS SHALL BE CAST BOXES AND COVERS. INTERIOR FITTINGS SHALL BE CAST WHERE EXPOSED ON WALLS. STAMPED BOXES MAY BE USED ABOVE CEILINGS IN AIR CONDITIONED SPACES.
13. CONTRACTOR SHALL INSTALL WIRING AND OTHER CIRCUIT COMPONENTS TO MATCH EQUIPMENT ACTUALLY INSTALLED.
14. INSTALL GROUND FAULT RECEPTACLES AT RECEPTACLE LOCATIONS WITHIN 5' OF SINKS OR LAVATORIES, AND AT EXTERIOR LOCATIONS. EXTERIOR RECEPTACLES SHALL ALSO BE WEATHERPROOF.
15. BONDING AND GROUNDING SHALL BE IN ACCORDANCE WITH NFPA 70:230-63, NFPA 250-23, 250-71, & 250-72.
16. GROUND NEUTRAL IN ACCORDANCE WITH NFPA 70:250-23b.
17. FUSES SHALL BE ITT CLASS K5, 250 VOLT, 200,000 AMP INTERRUPTING CAP.
18. PROVIDE SERVICES OF A FIRE/SMOKE DETECTION & ALARM COMPANY TO DESIGN & INSTALL ALARM SYSTEM TO MEET REQUIREMENTS OF THE STATE FIRE MARSHALL.
19. ALL ELECTRICAL, MECHANICAL & PLUMBING PENETRATING FIRE WALLS SHALL BE FIRE CAULKED. (PENETRATIONS THROUGH RATED CONSTRUCTION SHALL BE SEALED WITH A MATERIAL CAPABLE OF PREVENTING THE PASSAGE OF FLAMES AND HOT GASES WHEN TESTED IN ACCORDANCE WITH ASTM-E814.)

TYPE	MFR.	CATALOG NUMBER	MOUNTING	LAMP TYPE
F1	LITHONIA	THC 400MP A15 TB	PENDANT	MP400U
F1E	LITHONIA	THC 400MP A15 TB ORS	PENDANT	MP400U/250WQ
F2	LITHONIA	2PM3N G B 3 32 18LD 120 GEB10IS	RECESSED	3-F032/35K
F2A	LITHONIA	2PM3N G B 3 32 18LD 120 1/3 GEB10IS	RECESSED	3-F032/35K
F3	LITHONIA	2GT8 4 32 A12 120 1/4 GEB10 IS	RECESSED	4-F032/35K
F4	LITHONIA	2UC 17 120 GEB10IS	SURFACE	1-F032/35K
F4A	LITHONIA	2UC 17 120 GEB10IS	SURFACE	1-F017/35K
F5	LITHONIA	2GT8 2 32 A12 120 GEB10IS	RECESSED	2-F032/35K
F5E	LITHONIA	2GT8 2 32 A12 120 GEB10IS EL	RECESSED	2-F032/35K
F6	LITHONIA	WC 2 32 120 GEB10IS EL	SURFACE	2-F032/35K
F7	LITHONIA	2GT8 3 32 A12 120 1/3 GEB 10IS	RECESSED	2-F032/35K
F8	LITHONIA	WC 2 17 120 GEB10IS	SURFACE	1-F017/35K
F9	LITHONIA	TWP 175M TB LPI	SURFACE	1-175MH
F10	LITHONIA	LF6 2/18DIT MVOLT GEB10/F602A TRW	RECESSED	2-PL 18/32K
F11	LITHONIA	LF6 2/18DIT MVOLT GEB10/F602A TRW	RECESSED	2-PL 18/32K
F12	LITHONIA	SB 2 32 120 GEB10IS	SURFACE	2-F032/35K
F13	LITHONIA	2PM3N G B 2 32 32LD 120 GEB10IS	RECESSED	2-F032/35K
F14	LITHONIA	2AV G 3 32 MDR MVOLT 1/3 GEB10IS	RECESSED	2-F032/35K
F14A	LITHONIA	2AV G 3 32 MDR MVOLT 1/3 GEB10IS	RECESSED	2-F032/35K
F15	LITHONIA	TFM 175M RB TB TFMIS LPI DNA	GROUND	1-175MH
F16	LITHONIA	LP3V 120/3V01AZ	RECESSED	1-175MR16NFL
F17	EELP	EM1	SURFACE	2-5.4W
EX	EELP	XE 1 R W EM	SURFACE	LED

ELECTRICAL PLAN

PLATFORM CRANE SERVICE
DOSS DRIVE
SLIDELL, LOUISIANA

OFFICE/WAREHOUSE

DAMMON ENGINEERING, INC.
1095 FLORIDA AVENUE 985-649-5632 SLIDELL, LA. 70458
DAMMONENGINEERING.COM

SCALE: AS NOTED

FILE:

JOB NO.1655

DATE:04-11-05

SHEET

E - 1

OF

REVISED: 04-04-06