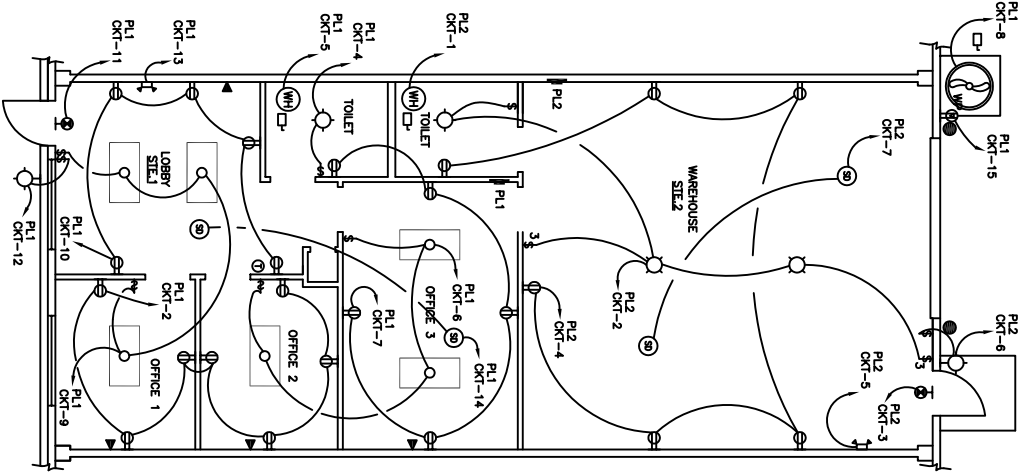


ELECTRICAL PLAN TYPICAL FOR ALL UNITS



ELECTRICAL PLAN TYPICAL FOR ALL UNITS

SCALE: 1/4"=1'-0"

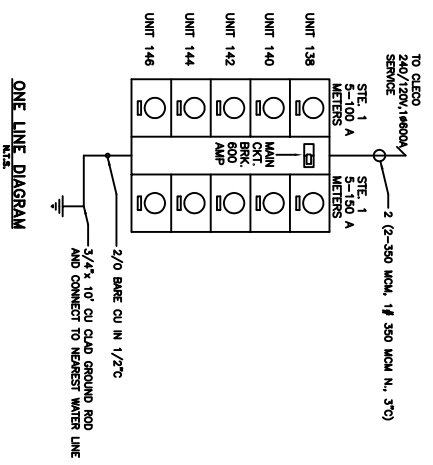
CIRCUIT NO.	LOAD DESCRIPTION	BREAKER (AMP)	LOAD (VA)	WIRE SIZE (AWG)	CONDUIT (IN)	TERMINALS PER CIRCUIT		LOAD DESCRIPTION	CIRCUIT NO.
						NO.	LOCATION		
1	100 WATT HEATER	20	2000	12	1/2	1	20	OFFICE 1/2 OUTLETS	4
2	W/WATER SWITCH	20	2000	12	1/2	1	20	TOILET VENT/LIGHT	3
3	6 OIL WATER HEATER	20	12000	12	1/2	1	20	OFFICE 2/3 LIGHTS	8
4	OFFICE 1/TOILET OUTLETS	20	2000	12	1/2	1	20	OFFICE 2/3 LIGHTS	8
5	OFFICE 1/TOILET OUTLETS	20	2000	12	1/2	1	20	OFFICE 2/3 LIGHTS	8
6	OFFICE 1/TOILET OUTLETS	20	2000	12	1/2	1	20	OFFICE 2/3 LIGHTS	8
7	OFFICE 1/TOILET OUTLETS	20	2000	12	1/2	1	20	OFFICE 2/3 LIGHTS	8
8	OFFICE 1/TOILET OUTLETS	20	2000	12	1/2	1	20	OFFICE 2/3 LIGHTS	8
9	OFFICE 1/TOILET OUTLETS	20	2000	12	1/2	1	20	OFFICE 2/3 LIGHTS	8
10	OFFICE 1/TOILET OUTLETS	20	2000	12	1/2	1	20	OFFICE 2/3 LIGHTS	8
11	OFFICE 1/TOILET OUTLETS	20	2000	12	1/2	1	20	OFFICE 2/3 LIGHTS	8
12	OFFICE 1/TOILET OUTLETS	20	2000	12	1/2	1	20	OFFICE 2/3 LIGHTS	8
13	OFFICE 1/TOILET OUTLETS	20	2000	12	1/2	1	20	OFFICE 2/3 LIGHTS	8
14	OFFICE 1/TOILET OUTLETS	20	2000	12	1/2	1	20	OFFICE 2/3 LIGHTS	8
15	OFFICE 1/TOILET OUTLETS	20	2000	12	1/2	1	20	OFFICE 2/3 LIGHTS	8
16	OFFICE 1/TOILET OUTLETS	20	2000	12	1/2	1	20	OFFICE 2/3 LIGHTS	8
17	OFFICE 1/TOILET OUTLETS	20	2000	12	1/2	1	20	OFFICE 2/3 LIGHTS	8
18	OFFICE 1/TOILET OUTLETS	20	2000	12	1/2	1	20	OFFICE 2/3 LIGHTS	8
19	OFFICE 1/TOILET OUTLETS	20	2000	12	1/2	1	20	OFFICE 2/3 LIGHTS	8
20	OFFICE 1/TOILET OUTLETS	20	2000	12	1/2	1	20	OFFICE 2/3 LIGHTS	8
21	OFFICE 1/TOILET OUTLETS	20	2000	12	1/2	1	20	OFFICE 2/3 LIGHTS	8
22	OFFICE 1/TOILET OUTLETS	20	2000	12	1/2	1	20	OFFICE 2/3 LIGHTS	8
23	OFFICE 1/TOILET OUTLETS	20	2000	12	1/2	1	20	OFFICE 2/3 LIGHTS	8
24	OFFICE 1/TOILET OUTLETS	20	2000	12	1/2	1	20	OFFICE 2/3 LIGHTS	8
TOTAL CONNECTED LOAD (VA)			15200						
TOTAL CONNECTED LOAD (VA)			15200						

CIRCUIT NO.	LOAD DESCRIPTION	BREAKER (AMP)	LOAD (VA)	WIRE SIZE (AWG)	CONDUIT (IN)	TERMINALS PER CIRCUIT		LOAD DESCRIPTION	CIRCUIT NO.
						NO.	LOCATION		
1	100 WATT HEATER	20	2000	12	1/2	1	20	OFFICE 1/2 OUTLETS	4
2	W/WATER SWITCH	20	2000	12	1/2	1	20	TOILET VENT/LIGHT	3
3	6 OIL WATER HEATER	20	12000	12	1/2	1	20	OFFICE 2/3 LIGHTS	8
4	OFFICE 1/TOILET OUTLETS	20	2000	12	1/2	1	20	OFFICE 2/3 LIGHTS	8
5	OFFICE 1/TOILET OUTLETS	20	2000	12	1/2	1	20	OFFICE 2/3 LIGHTS	8
6	OFFICE 1/TOILET OUTLETS	20	2000	12	1/2	1	20	OFFICE 2/3 LIGHTS	8
7	OFFICE 1/TOILET OUTLETS	20	2000	12	1/2	1	20	OFFICE 2/3 LIGHTS	8
8	OFFICE 1/TOILET OUTLETS	20	2000	12	1/2	1	20	OFFICE 2/3 LIGHTS	8
9	OFFICE 1/TOILET OUTLETS	20	2000	12	1/2	1	20	OFFICE 2/3 LIGHTS	8
10	OFFICE 1/TOILET OUTLETS	20	2000	12	1/2	1	20	OFFICE 2/3 LIGHTS	8
11	OFFICE 1/TOILET OUTLETS	20	2000	12	1/2	1	20	OFFICE 2/3 LIGHTS	8
12	OFFICE 1/TOILET OUTLETS	20	2000	12	1/2	1	20	OFFICE 2/3 LIGHTS	8
13	OFFICE 1/TOILET OUTLETS	20	2000	12	1/2	1	20	OFFICE 2/3 LIGHTS	8
14	OFFICE 1/TOILET OUTLETS	20	2000	12	1/2	1	20	OFFICE 2/3 LIGHTS	8
15	OFFICE 1/TOILET OUTLETS	20	2000	12	1/2	1	20	OFFICE 2/3 LIGHTS	8
16	OFFICE 1/TOILET OUTLETS	20	2000	12	1/2	1	20	OFFICE 2/3 LIGHTS	8
17	OFFICE 1/TOILET OUTLETS	20	2000	12	1/2	1	20	OFFICE 2/3 LIGHTS	8
18	OFFICE 1/TOILET OUTLETS	20	2000	12	1/2	1	20	OFFICE 2/3 LIGHTS	8
19	OFFICE 1/TOILET OUTLETS	20	2000	12	1/2	1	20	OFFICE 2/3 LIGHTS	8
20	OFFICE 1/TOILET OUTLETS	20	2000	12	1/2	1	20	OFFICE 2/3 LIGHTS	8
21	OFFICE 1/TOILET OUTLETS	20	2000	12	1/2	1	20	OFFICE 2/3 LIGHTS	8
22	OFFICE 1/TOILET OUTLETS	20	2000	12	1/2	1	20	OFFICE 2/3 LIGHTS	8
23	OFFICE 1/TOILET OUTLETS	20	2000	12	1/2	1	20	OFFICE 2/3 LIGHTS	8
24	OFFICE 1/TOILET OUTLETS	20	2000	12	1/2	1	20	OFFICE 2/3 LIGHTS	8
TOTAL CONNECTED LOAD (VA)			15200						
TOTAL CONNECTED LOAD (VA)			15200						

- LEGEND**
- - F1-134 FLUORESCENT FIXTURE SURFACE MF.
  - 4-F40T12 LAMPS, ACRYLIC PRISMATIC LENS
  - ⊕ - EXIT LIGHT W/ 90 MIN. BATTERY BACKUP
  - ⊖ - EMERGENCY LIGHT W/ 90 MIN. BATTERY BACKUP
  - ⊙ - SWITCH
  - ⊚ - 3 WAY SWITCH
  - ⊛ - DUPLEX RECEPTACLE
  - ⊜ - GFI RECEPTACLE
  - ⊝ - GFI RECEPTACLE (WEATHER PROOF)
  - ⊞ - DISCONNECT SWITCH
  - ⊟ - PANEL
  - ⊠ - THERMOSTAT
  - ⊡ - 6 GAL. HOT WATER HEATER WITH DISCONNECT ON DECK ABOVE TOILETS
  - ⊢ - WALL MOUNTED LIGHT FIXTURE
  - ⊣ - VENT/LIGHT
  - ⊤ - SMOKE DETECTOR-UL #285 WIRED TO 110V. CIRCUIT
  - ⊥ - TELEPHONE/COMPUTER (VERIFY LOCATION WITH OWNER BEFORE INSTALLATION)
  - ⊦ - LOW BAY (250W) WAREHOUSE LIGHT FIXTURES.

ELECTRICAL NOTES:

1. ALL WORK SHALL CONFORM TO THE LATEST EDITION OF THE NATIONAL ELECTRICAL CODE. THE SPECIFICATIONS PERTAINING TO APPROVED MATERIALS SHALL BE USED.
2. ALL MATERIALS FURNISHED SHALL BE NEW AND SHALL BE LISTED.
3. THE WORK SHALL NOT BE USED IN THE EXISTING LOCATION OF ALL LIGHTING FIXTURES, RECEPTACLES AND TELEPHONE OUTLETS, ETC. SHALL BE RELOCATED TO THE NEW LOCATION IN THE FIELD AND SHALL BE WIRE AND WIRING.
4. REFER TO THE CONTRACT DOCUMENTS IN THE FIELD AND SEE WOOD OUTLINE.
5. THESE NOTES WITH THE EXISTING CONDITIONS. THE WORK WITH OTHER TRADES AND WITH OTHER CONTRACTORS WHOSE WORK MAY AFFECT THE INSTALLATION.
6. ELECTRICAL CONTRACTOR SHALL COORDINATE INCLUDING ELECTRICAL SERVICE WITH UTILITY COMPANY AND INCLUDE IN HIS BID ALL CHARGES AND FEES INCURRED.
7. WHERE MORE THAN ONE SWITCH OCCURS IN THE SAME LOCATION, THEY SHALL BE INSTALLED IN A GANG THE BOX UNDER ONE COVER PLATE.
8. THE ELECTRICAL CONTRACTOR SHALL BE RESPONSIBLE FOR THE INSTALLATION WITH THE TELEPHONE COMPANY AND THE GENERAL CONTRACTOR.
9. ELECTRICAL CONTRACTOR, BEFORE INSTALLING ANY OF THE WORK, SHALL SEE THAT ALL NECESSARY PERMITS ARE OBTAINED AND THAT ALL NECESSARY HAND DRAWMINGS AND DETAILS IF ANY WORK IS INSTALLED AND IF LATER DEVELOPS THAT SUCH DETAILS OR DESIGN CANNOT BE FOLLOWED, THE CONTRACTOR AT HIS OWN RISK SHALL BE RESPONSIBLE FOR THE INSTALLATION OF THE ARCHITECTURAL WORK AS SHOWN AS WELL AS TO PERMIT THE INSTALLATION OF THE ARCHITECTURAL WORK AS SHOWN.
10. THE PLANS AND DETAILS BY THE OWNER OR THE ENGINEER IN CONNECTION WITH THE OPERATION OF THE ELECTRICAL SYSTEM IN THE BUILDING.
11. ALL TESTS SHALL BE MADE IN ACCORDANCE WITH THE LATEST STANDARD OF THE NATIONAL ELECTRICAL CODE.
12. REMAINING CONDUCTOR SIZE SHALL BE #12, 90KV INSULATION TYPE BX CABLE.
13. CONDUIT SHALL BE APPROVED BY LOCAL AUTHORITY.
14. INSTALL GROUND FAULT RECEPTACLES AT LOCATIONS WITHIN 5' OF SINKS OF LAVATORIES AND EXTERIOR LOCATIONS. EXTERIOR RECEPTACLES SHALL BE WEATHER RESISTANT AND SHALL BE LISTED.
15. INSTALL GROUND FAULT RECEPTACLES AT LOCATIONS WITHIN 5' OF SINKS OF LAVATORIES AND EXTERIOR LOCATIONS. EXTERIOR RECEPTACLES SHALL BE WEATHER RESISTANT AND SHALL BE LISTED.
16. GROUND NEUTRAL, IN ACCORDANCE WITH NFPA 70:250-23b.
17. ALL WIRING SHALL BE IN ACCORDANCE WITH NFPA 70:250-23b.
18. EXTERIOR LIGHTING SHALL BE SHADDED OR SHAWDED OR DIRECTED IN SUCH A MANNER SO THAT NO DIRECT LIGHTING OR GLARE IS CAST BEYOND THE PROPERTY LINE.
19. ALL WIRING SHALL BE IN ACCORDANCE WITH NFPA 70:250-23b.
20. EXTERIOR LIGHTING SHALL BE SHADDED OR SHAWDED OR DIRECTED IN SUCH A MANNER SO THAT NO DIRECT LIGHTING OR GLARE IS CAST BEYOND THE PROPERTY LINE.
21. SWITCHES AND THERMOSTATS SHALL BE MOUNTED 48" A.F.F. MAXIMUM.
22. ALL RECEPTACLES SHALL BE MOUNTED 15" A.F.F. MINIMUM. WALLS SHALL BE FIRE CALKED. (OPERATIONS THROUGHOUT BUILT CONSTRUCTION SHALL BE SCALED WITH A MATERIAL CAPABLE OF PREVENTING THE PASSAGE OF FLAMES AND HOT GASES WHEN TESTED IN ACCORDANCE WITH ASTM-E814.)



ONE LINE DIAGRAM