

4132 Jefferson Highway
Jefferson, La. 70121
504-835-8779
504-828-4346
Mail@htwmotorsports.com

Hupcap, Tire & Wheel, Inc.
HTW Motorsports

Fax Fax Fax Fax

To: JENNIE From: Alberto R. Alonso, GM

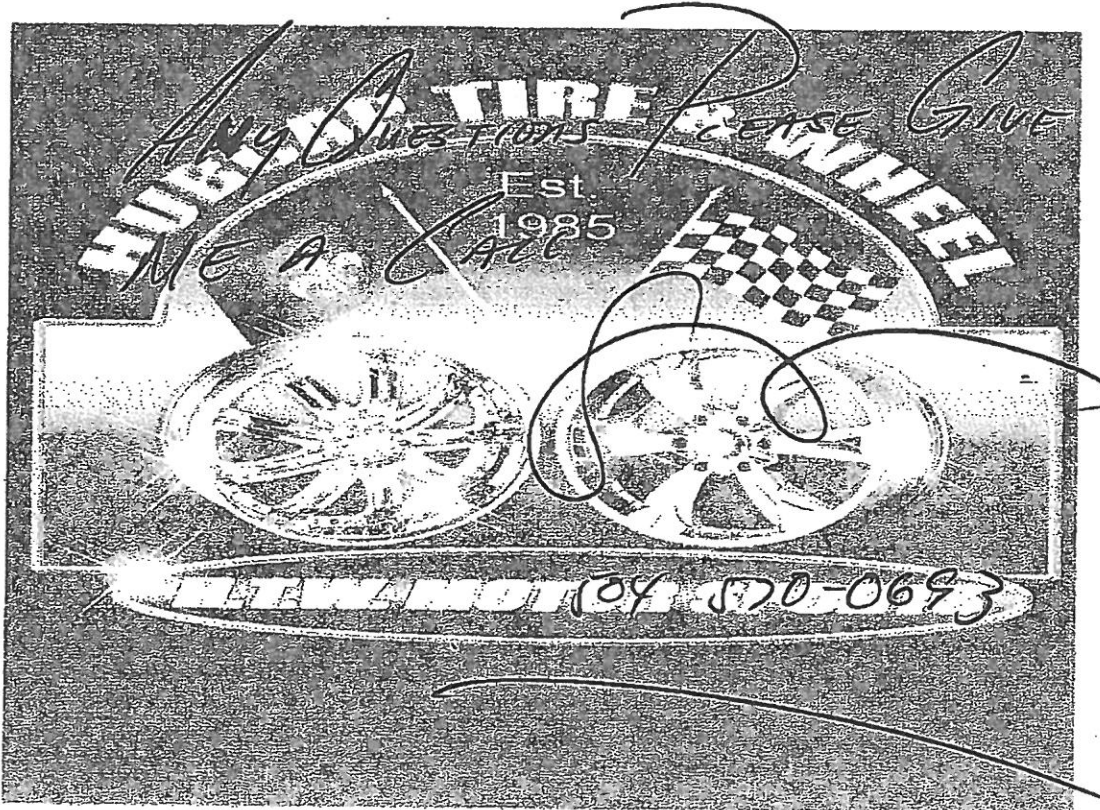
Fax: 985-641-5950 Pages: 1 of MANY (LOST COAST)

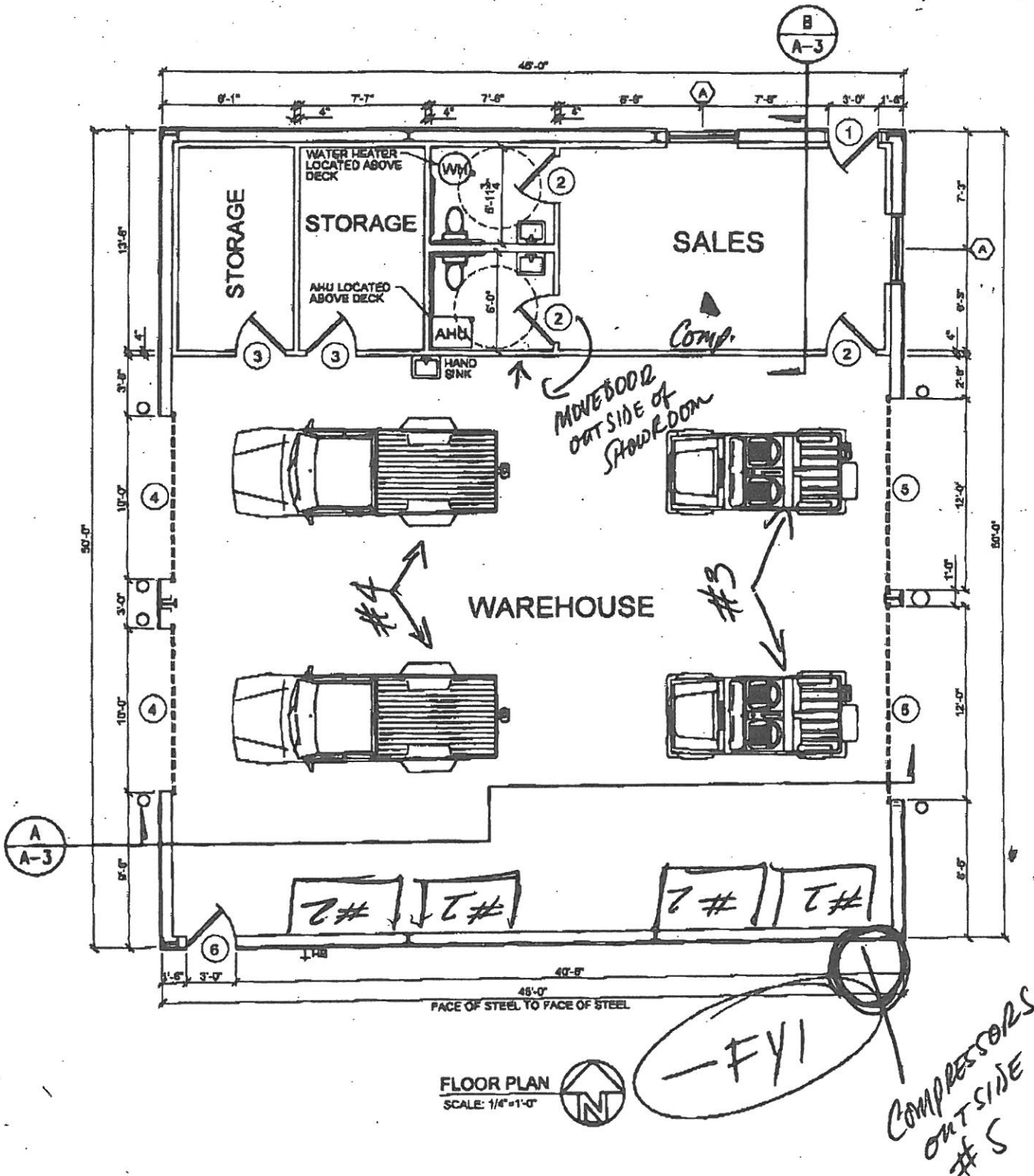
Phone: _____ Date: 11/27/07

Re: BUILDING cc: _____

Urgent For Review Please Comment Please Reply Please Recycle

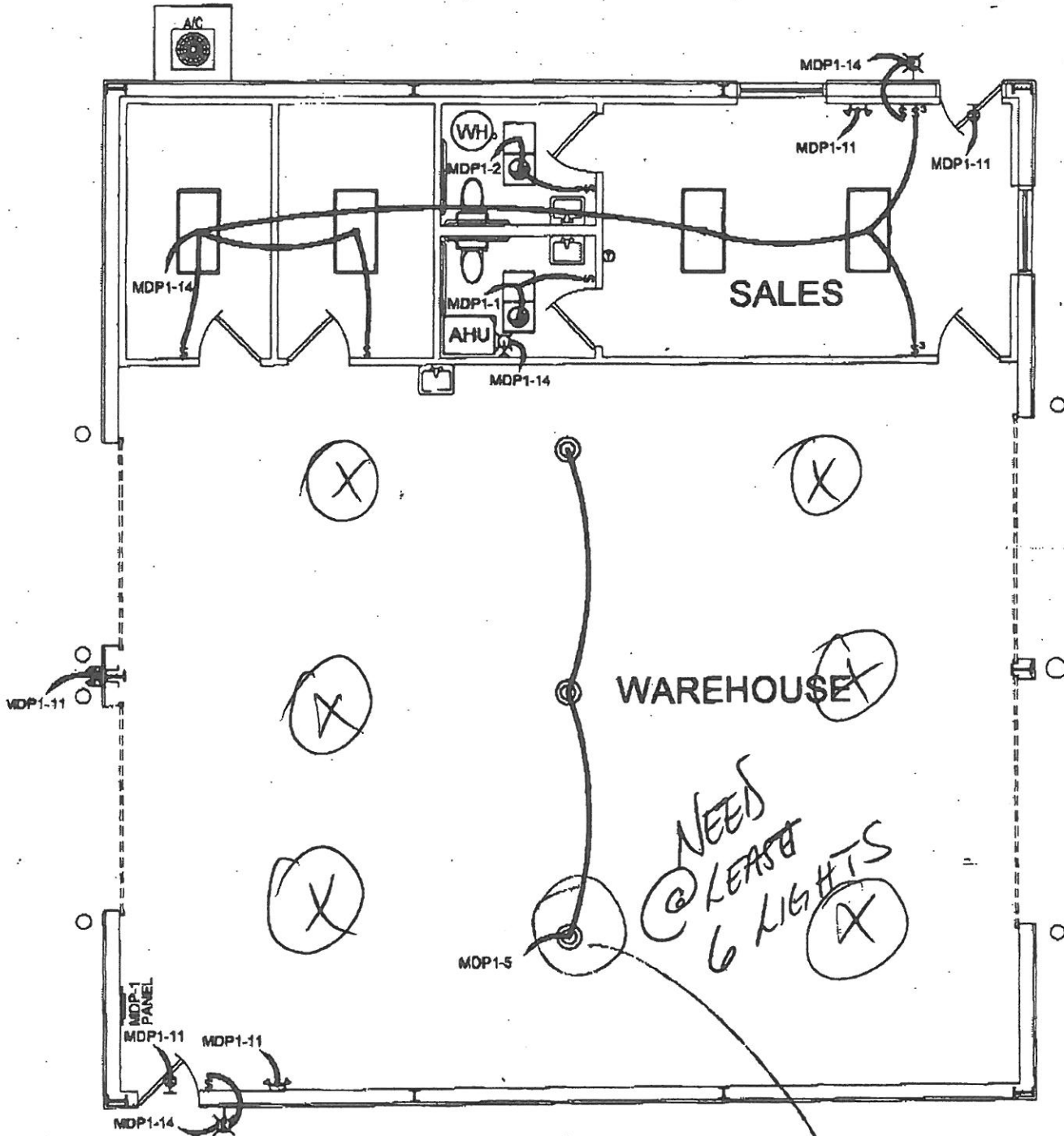
● Comments:





FLOOR PLAN
SCALE: 1/4"=1'-0"





LIGHTING PLAN
 SCALE: 1/4"=1'-0"



Is three high bay lights enough?

LEGEND

Use this to help you understand all electrical!



- 2'x4' RECESSED FLUORESCENT LAMP, STEEL HOUSING



- VENT / LIGHT



- 2 BULB EXTERIOR FLOOD LIGHT



- EMERGENCY LIGHT WITH 90 MIN. BATTERY BACKUP



- 120V, 20A DUPLEX RECEPTACLE



- 120V, GFI RECEPTACLE



- 120V, WEATHER PROOF RECEPTACLE



- DISCONNECT



- POWER PANEL



- SWITCH



- 3-WAY SWITCH



- EXIT LIGHT, 90 MINUTE BATTERY BACK-UP



- THERMOSTAT



- HIGH BAY LIGHT



- TELEPHONE / COMPUTER



- 20 GAL WATER HEATER



- PULL CHAIN LIGHT



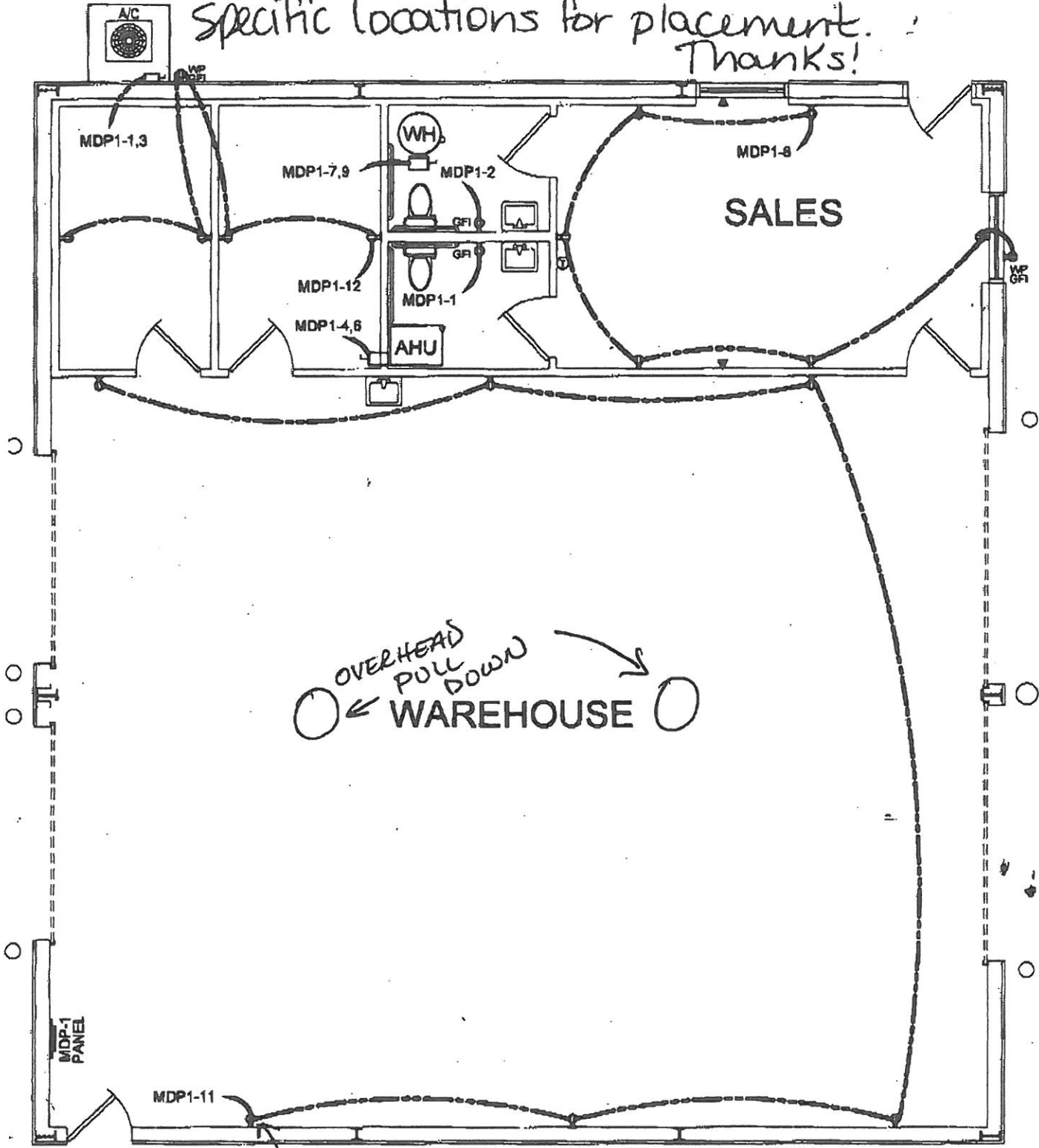
- EXTERIOR WATERPROOF WALL MOUNTED LIGHT



- Twist Lock Receptacle

For warehouse

* THE MACHINE OUTLETS WILL GET THEIR OWN ~~WP~~ CIRCUIT SO WE NEED SPECIFIC LOCATIONS FOR PLACEMENT.
 Thanks!



Power Plan

TL recept.



Home | Site Map

Search >>

Home > Products & Solutions

About Us

Products & Solutions

Services & Support

News & Events

Training & Resources

Application Guide

Select your vehicle to find the right AMMCO® and COATS® accessories for the job.

vehicle make:

Coats® Tire Changer Machines

Model 9024E Rim Clamp®

The Tire Changer That Takes On The Biggest Challenges

Clamps Wheels Externally Up to 24" (Up to 28" with optional clamps. PN 8185531 or 8185580)

Wheels keep getting bigger and more expensive. The Coats 9024E allows you to change tires on oversized wheels (up to 24") while providing complete protection. It can also clamp internally up to 26". You can service the expanding market for custom alloy wheels.

Improved Bead Loosener Action

Cam operated bead loosener ensures contact with wider wheels at the proper angles. Minimizes risk of wheel damage.

Power Devices That Do 90% of the Work

Power taper rollers, pneumatic drop center, and swing-in rollers handle approximately 90% of the effort required to change even the toughest tires. Technicians can concentrate on efficiency.

Complete Protection for Expensive, Delicate Wheels

The Coats 9024E provides protection for wheels at every step of the process. Bead loosener socks, clamp booties, and lift tool protection prevent metal-to-metal contact that causes scratching or marring.

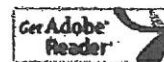
[Featured Parts & Accessories](#)

[PDF Downloads](#)

[Product Brochure](#)

[Operators Manual](#)

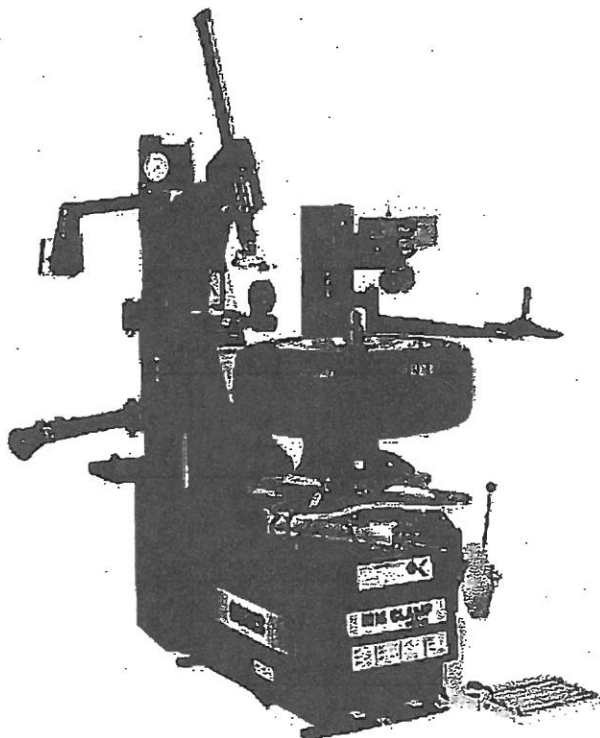
[Parts List](#)



How To Buy

Use our Request A Quote form for price and shipping information for any product.

[Request A Quote for this product now!](#)



(9024E shown with optional Wheel Lift and PAX System Accessory Kit)

2

Coats Model 9024E Rim Clamp Tire Changer - Tire Changing Equipment

Page 2 of 2

Specifications

Wheels Handled	Steel, alloy, and performance
Mount/Demount Mechanism	Automatic tilt back
Tool Head Offset Adjustment	Pneumatic lift, set back, and lock
Shape of Tabletop	"X" shaped for rigid perimeter support of the wheel.
Wheel Clamping Method	Four self centering clamps in table top actuated by two pneumatic cylinders.
Bead Loosening System	Foot control actuates 7-1/4" dual action cylinder that handles wheels up to 16" wide.
Drive System (Electric)	A full 2 HP @ 110v, 20A, single phase.
Pressure Limiter	Standard
Bead Seating Reservoir	4.75 gal. separate tank, pressure protected.
Inflation Gauge	Easily calibrated 0 to 60 PSI gauge with protection to 200 PSI. Damage resistant Lexan faceplate.
Filter Lubricator	Standard with automatic drain and large capacity lubricator bowl.
Rim Diameter	12" - 24" External (28" with optional clamps 8185590 or 8185531) 14" - 26" Internal
Maximum Tire Width	16"
Tire Diameter	47"
Required Air Source	110 to 175 PSI 2HP compressor, 5 SCFM at 150 PSI.
Operating Footprint	58" x 73" x 83.5"
Shipping Weight	1,100 lbs.

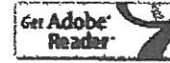
[Home](#) | [About Us](#) | [Products](#) | [Services](#) | [News](#) | [Training](#) | [Contact Us](#) | [Terms](#) | [Privacy](#) | [Site Map](#)

© Hennessy Industries, Inc.

Hennessy Industries, Inc.
1801 J. P. Hennessy Drive
La Vergne, TN 37086

Toll Free Phone: 1.800.688.6359
Canada: 1.905.672.9440
Fax: 1.800.688.3659

- 7 Eliminates guesswork. Can do most Tape-A-Weights in just one spin.
- 8 CD-ROM with XR 1800 video overview, plus information on all Coats' balancers and key accessories.
- 9 Complete collection of free printable merchandising materials (posters, counter cards, and consumer literature) that can be used to promote premium balances and increase revenues.



How To Buy

Use our Request A Quote form for price and shipping information for any product.

Request A Quote for this product now!

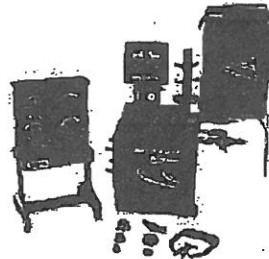
The Complete Balancing System

Coats supports the XR 1800 with the most comprehensive collection of accessories and adapters on the market. You can select a package of accessories that fits your business.

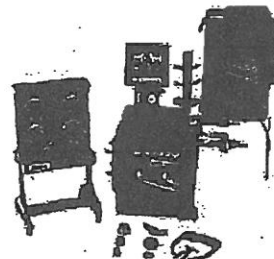
Package 1
 Adapters for Passenger Cars
 8113428 - standard cone kit, wheel weight hammer, calipers.



Package 2
 Adapters for Passenger Cars through Light Trucks
 8113593 - standard cone kit, wheel weight hammer, calipers, 40 mm pinplate system, application chart, hole gauge, Balancer Mate storage system.



Package 3
 Adapters for Passenger Cars through Medium Duty Trucks
 8113594 - standard cone kit, wheel weight hammer, calipers, 40 mm pin plate system, application chart, hole gauge, Balancer Mate storage system; light cone truck kit and balancer chuck.



Specifications

Balancing Modes	12
Tire Diameter	Up to 44"
Rim Width	2" to 24"
Max. Tire WL.	160 lbs.
Shaft Diameter	40mm
Shaft Length	8-5/8"
Resolution: Oz.	0.01
Resolution: Degrees	1.4
Accuracy: Oz.	0.01
Power Requirement	110v AC, 1 Phase
Footprint	60"W x 52"D
Shipping Weight	625 lbs.


[Home](#) | [Site Map](#)

 Search [>>](#)
[Home](#) > [Products & Solutions](#)
[About Us](#)
[Products & Solutions](#)
[Services & Support](#)
[News & Events](#)
[Training & Resources](#)

Coats® Wheel Balancer Machines

XR1800

The Total Ride Management System.

The Coats XR 1800 Wheel Balancer Ride Management System is sensitive enough to solve the most complex balancing challenge, and tough enough to use all day long.



Application Guide

Select your vehicle to find the right AMMCO® and COATS® accessories for the job.

 vehicle make:

Key Features

- Complete diagnostic suite for radial runout and other key issues to solve difficult vibration problems. Adds just 2-3 seconds to cycle time. Fast enough to use with every balance.
- Real-time 3-D animated graphics and visual cues provide a simple user interface that promotes proper balancing techniques and faster floor-to-floor times.
- Auto data entry, direct Tape-A-Weight locator, and behind-the-spoke mode simplify balancing today's wider, low profile aftermarket tires.
- Highly accurate sensor system replaces an outer arm, increasing productivity and reducing machine wear.
- Onboard air supply for quicker rotation and balance jobs.
- Adapter carousel, high volume weight tray, and side storage pegs mean accessories are readily available.
- Positioning pedal holds location at 12 o'clock for proper weight placement.
- Multiple operator feature allows up to four technicians to work at once.

- 1** 3-D and 2-D modes. Provides clear directions and operator prompts for easy balancing. Simultaneous display of static and dynamic data identifies any excess residual static imbalance.
- 2** Clamps wheel into stable position for easy weight placement.
- 3** Simple numbered button system speeds technician input and mode selection.
- 4** No need to move to tire changer for rotate and balance jobs. Adjust tire inflation at the balancer.
- 5** Touchless digital sensor system eliminates outer arm and collects parameters for analyzing balance. Drop the hood and the balancer begins its cycle.
- 6** Puts most commonly used accessories right at the technician's fingertips.

[Featured Parts & Accessories](#)

[PDF Downloads](#)

[Sales Brochure](#)

[Operators Manual](#)

[Parts List](#)

- Scissor Lifts
- Motorcycle Lifts
- Four Post Auto Lifts
- Two Post Auto Lifts
- Custom Lifts
- Tire Equipment
- Shop Equ
- Home
- FAQ's
- Policies
- Shipping
- About Us
- Contact Us



Cut out the middle man – buy directly from the factory. Get the same great products for the lowest price!

National Auto Tools is a minority owned company with over 25 years of dedication to Quality, Value and Service



Shop by Category

- Two Post Automotive Lifts (4)
- Four Post Automotive Lifts (8)
- Single Post Automotive Lifts (2)
- Scissor Lifts (2)
- Motorcycle Lifts (2)
- Tire Equipment (4)
- Shop Equipment (12)
- Accessories (8)
- Specials (1)
- Custom Lifts (1)

Charity of the Month a percentage of all purchases this month go to...

Home :: Scissor Lifts :: NRL-6 6,000 Lb. Low Rise Scissor Lift

Scissor Lifts Product 2/2

prev listing next



larger image

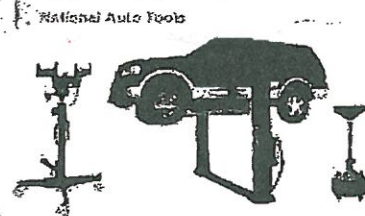
NRL-6 6,000 LB. LOW RISE SCISSOR LIFT

\$1,595.00

The NLR-6000 makes brake or tire work easy. This low rise lift also works well for collision repair and new car prep. This car lift comes standard with four lifting pads.

Capacity 6,000 lbs
 Lifting Height 26"
 Overall Width 54"
 Overall Length 73"
 Voltage 110V

#3



Instant Garage Blowout sale NTJ-1, NT9, NOD-8 everything you need to get your custom garage started

Buy Now

only \$1555.00

CAR DRIVER

Select A Make

Not sure which lift is right for you? Visit Car and Driver to find your car's specs.


Need Help? Have a Question?

- Scissor Lifts
 - Motorcycle Lifts
 - Four Post Auto Lifts
 - Two Post Auto Lifts
 - Custom Lifts
 - Tire Equipment
 - Shop Equipment
- Home
 - FAQ's
 - Policies
 - Shipping
 - About Us
 - Contact Us



Cut out the middle man – buy directly from the factory. Get the same great products for the lowest price!

National Auto Tools is a minority owned company with over 25 years of dedication to Quality, Value and Service



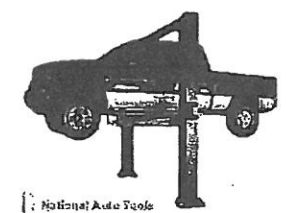
Shop by Category

- Two Post Automotive Lifts (4)
- Four Post Automotive Lifts (8)
- Single Post Automotive Lifts (2)
- Scissor Lifts (2)
- Motorcycle Lifts (2)
- Tire Equipment (4)
- Shop Equipment (12)
- Accessories (9)
- Specials (1)
- Custom Lifts (1)

Charity of the Month
a percentage of all purchases this month go to...

Home :: Two Post Automotive Lifts :: NTO11A 11,000 Lb. Two Post Asymmetric Automotive Lift

Two Post Automotive Lifts Product 4/4



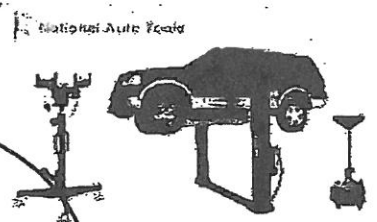
NTO11A 11,000 LB. TWO POST

ASYMMETRIC AUTOMOTIVE LIFT

\$1,695.00

A heavy duty lift with single point safety release. Direct drive cylinders guarantee smooth travel. Large, over-sized truck adapters are included so you can handle small cars to large trucks.

Capacity	11,000 lbs
Style	Overhead



Instant Garage blowout sale
NTJ-1, NT9, NOD-8
everything you need to get your custom garage started

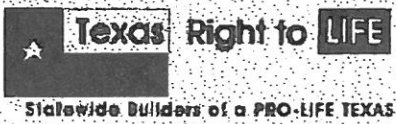
Buy Now
only \$1555.00



Select A Make

Not sure which lift is right for you? Visit Car and Driver to find your car's specs.

Need Help? Have a Question?



Overall Height 148"
 Overall Width 130"
 Width Between Columns 110"
 Drive Thru Width 99"
 Lowered Height 5"
 Lifting Height 71"
 Base Plate 17" x 19"

call 1-866-563-LIFT

our staff is ready to answer any of your questions 24/7.

Sí Habla Español

Proud Members of



Buy Now

tell a friend

write a review

PayPal



We accept all major credit cards.

Shipping Notice

Shipping Charges are extra and not included in the price. Please call 1-866-563-LIFT For a Custom Quote, or click here for more information

© Copyright 2007 National Auto Tools • 814 Blue Mound Rd. • Fort Worth • TX 76131 • 1-866-563-LIFT

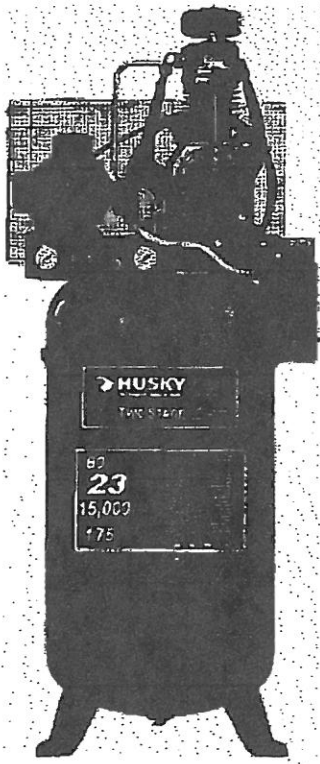
created and maintained by the Isphere

Home Log In [Two Post Automotive Lifts](#) [Four Post Automotive Lifts](#) [Single Post Automotive Lifts](#) [Scissor Lifts](#)

Agency

[Motorcycle Lifts](#) [Tire Equipment](#) [Shop Equipment](#) [Accessories](#) [Specials](#) [Custom Lifts](#) [Shipping](#) [Privacy](#)

[Conditions of Use](#) [Contact Us](#) [Site Map](#)



#5
OUTSIDE
of
BUILDING

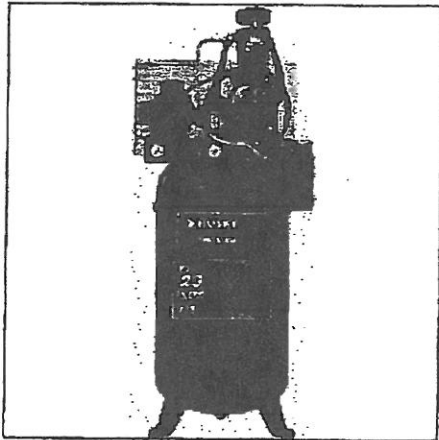


[Products](#)

[Contact Us](#)

[About Husky](#)

You are here > Home > Air Compressors > Compressors: Husky > 7.5Hp, 80 Gallon, Two Stage Air Compressor With Mag. Starter



[CLICK IMAGE TO VIEW LARGER](#)

7.5Hp, 80 Gallon, Two Stage Air Compressor With Mag. Starter
Model TF2912

A solid CAST IRON, oil-lubricated pump for extreme durability. Offers 175 PSI maximum pressure and air delivery 23.7/22.2SCFM @ 90/175 PSI. The unit has a space saving vertical design and includes factory installed magnetic starter.

[PRINT THIS PAGE](#)

[BUY THIS PRODUCT NOW](#)

[BUY AT HOME DEPOT.COM](#)

AVAILABLE FOR PURCHASE OR SPECIAL ORDER AT RETAIL STORES

[FIND THE HOME DEPOT STORE NEAR YOU](#)

[VIEW ALL PRODUCTS IN SUBCATEGORY](#)

Customer Support

Contact customer service if you have additional questions

888-HD-HUSKY

All Husky products are backed by the best warranties in their categories. Please see product packaging for details.

[Home](#) [Terms of Use](#) [Privacy Policy](#) [FAQ](#) Enter your e-mail address to receive special offers and promotions.



