

**DAMMON**  
ENGINEERING, INC.

CHIEF ENGINEER  
EMMETT  
DAMMON, P.E.

CHIEF ARCHITECT  
ROBERT  
WILTSE

1095 FLORIDA AVENUE  
SLIDELL, LA. 70458  
OFFICE: 985-649-5832  
FAX: 985-641-5950

WEBSITE:  
WWW.DAMMONENGINEERING.COM  
EMAIL:  
DAMMONENG@BELLSOUTH.NET

ARCHITECTURE  
ENGINEERING  
STUDIES  
PLANNING  
INVESTIGATION  
EXPERT WITNESS

NEW  
FACILITY

STANDARD  
MATERIALS  
1601 NORTH LANE  
MANDEVILLE, LA

CONTROL ROOM  
PLUMBING PLAN

REV:

SCALE: AS NOTED

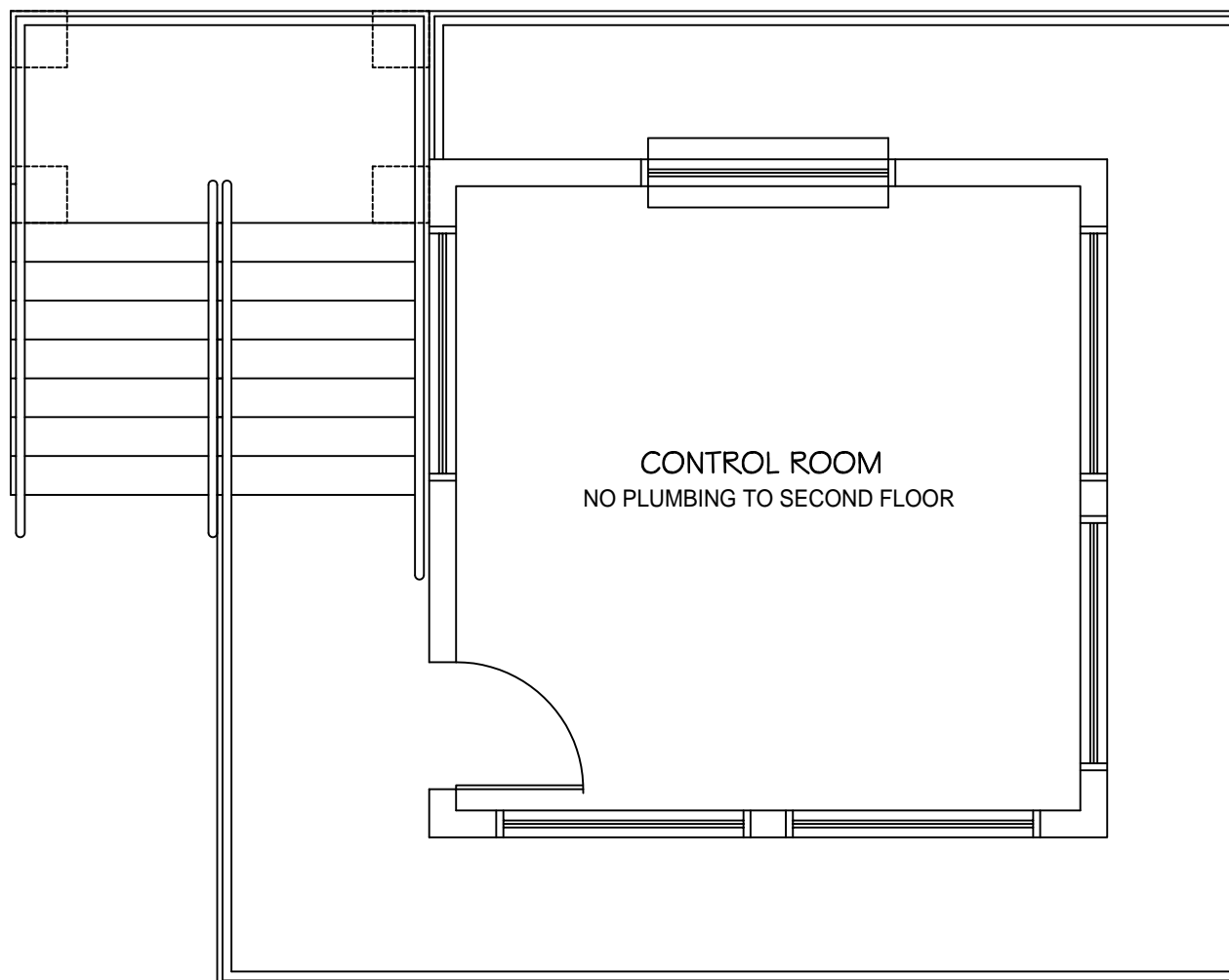
JOB#: 1906

DATE: 01-09-09

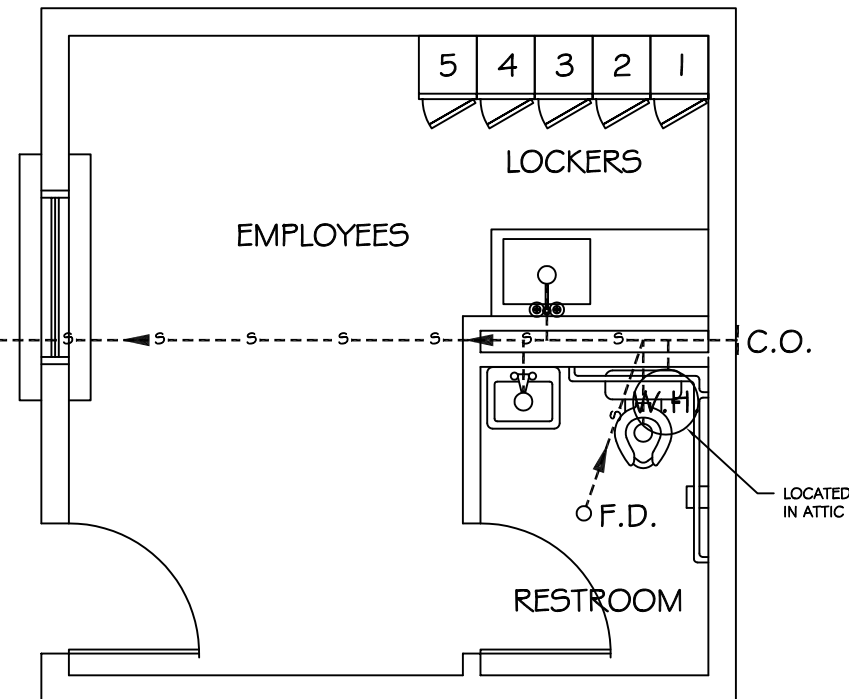
SHEET

**P-3**

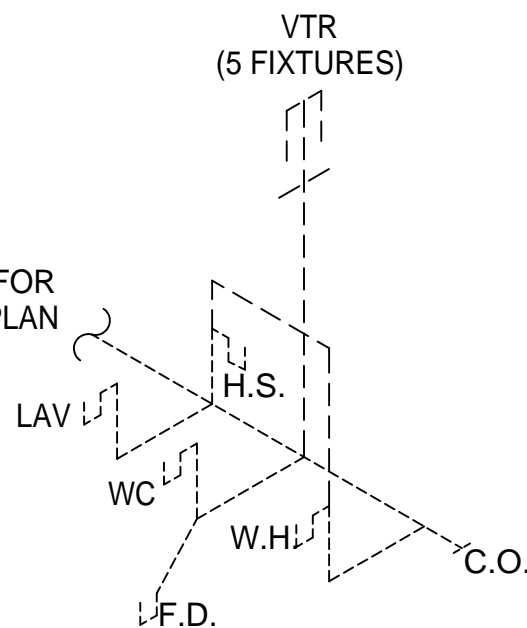
OF



SECOND FLOOR PLUMBING PLAN  
SCALE: 1/2"=1'-0"



FIRST FLOOR PLUMBING PLAN  
SCALE: 1/2"=1'-0"



PLUMBING RISER DIAGRAM  
SCALE: 1/2"=1'-0"

SEE SHT P-1 FOR  
OVERALL PLUMBING PLAN

SEE SHT P-1 FOR  
OVERALL PLUMBING PLAN

LOCATED  
IN ATTIC

CONTROL ROOM  
NO PLUMBING TO SECOND FLOOR

