

DAMMON
ENGINEERING, INC.

CHIEF ENGINEER
EMMETT
DAMMON, P.E.

CHIEF ARCHITECT
ROBERT
WILTSE

1095 FLORIDA AVENUE
SLIDELL, LA. 70458
OFFICE: 985-649-5832
FAX: 985-641-5950

WEBSITE:
WWW.DAMMONENGINEERING.COM

EMAIL:
DAMMONENG@BELLSOUTH.NET

ARCHITECTURE

ENGINEERING

STUDIES

PLANNING

INVESTIGATION

EXPERT WITNESS

NEW
FACILITY

STANDARD
MATERIALS
1601 NORTH LANE
MANDEVILLE, LA

PILE CAP &
COLUMN BASE
FOUNDATION
PLAN & DETAILS

REV:

SCALE: AS NOTED

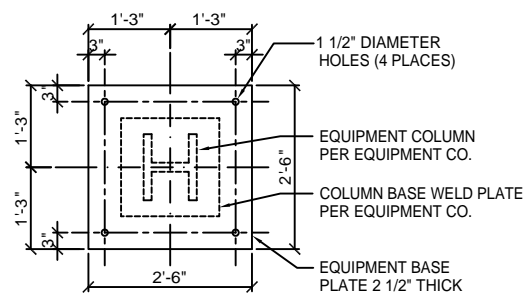
JOB#: 1906

DATE: 01-01-09

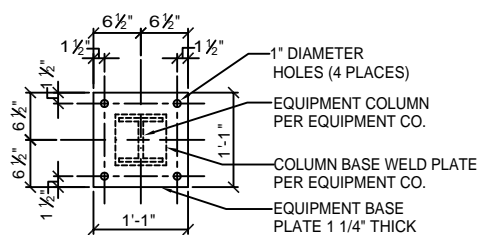
SHEET

S-4

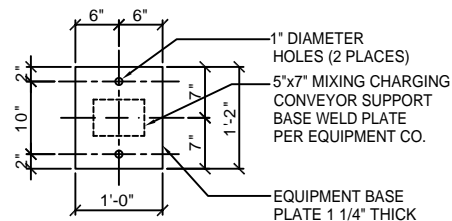
OF



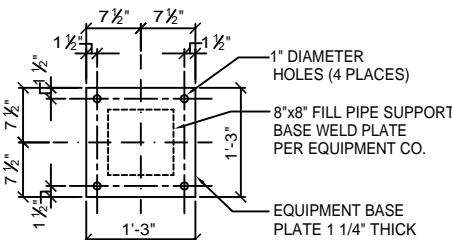
BASE PLATE DETAIL 3
SCALE: 3/4"=1"
(TYPICAL - 4 PLACES)



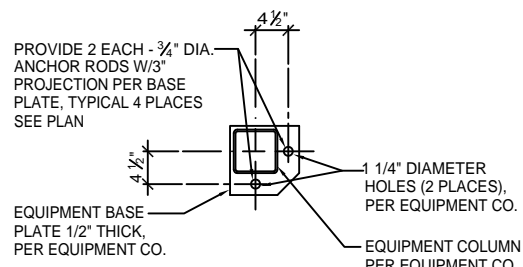
BASE PLATE DETAIL 4
SCALE: 1"=1"
(TYPICAL - 6 PLACES)



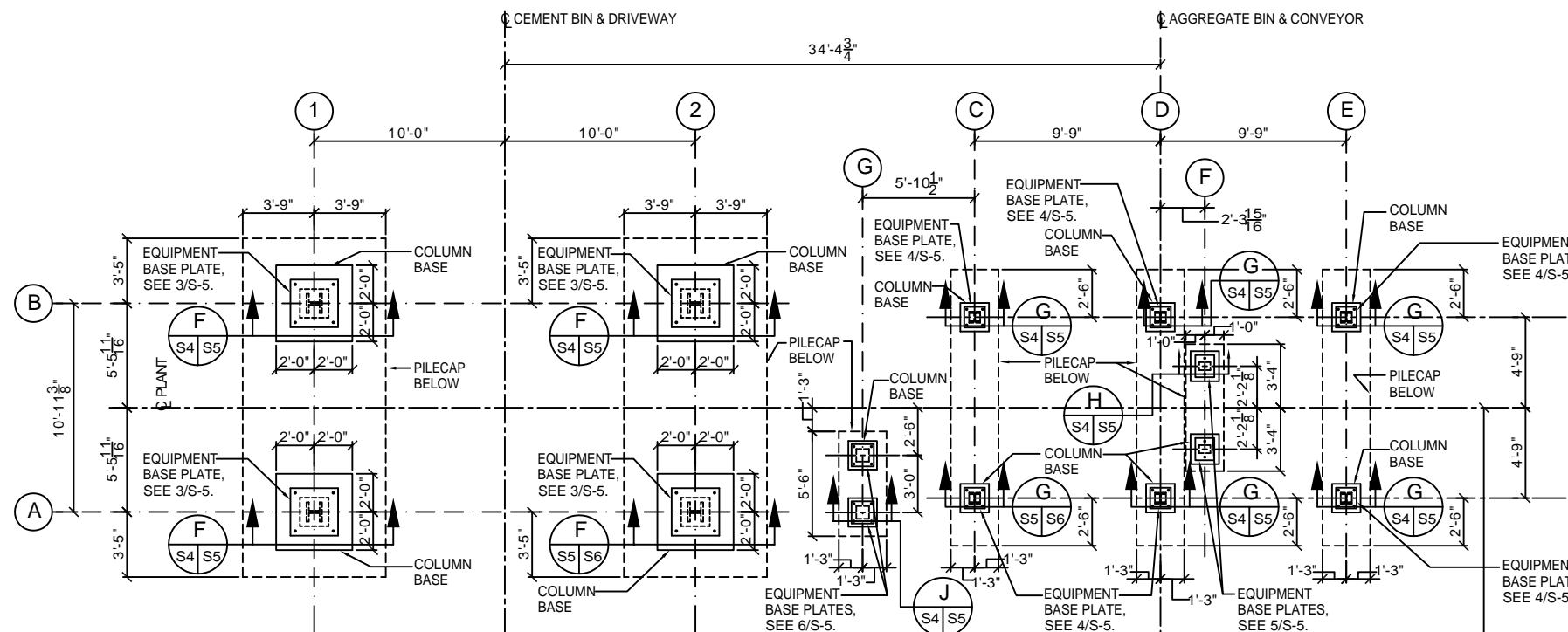
BASE PLATE DETAIL 5
SCALE: 1"=1"
(TYPICAL - 6 PLACES)



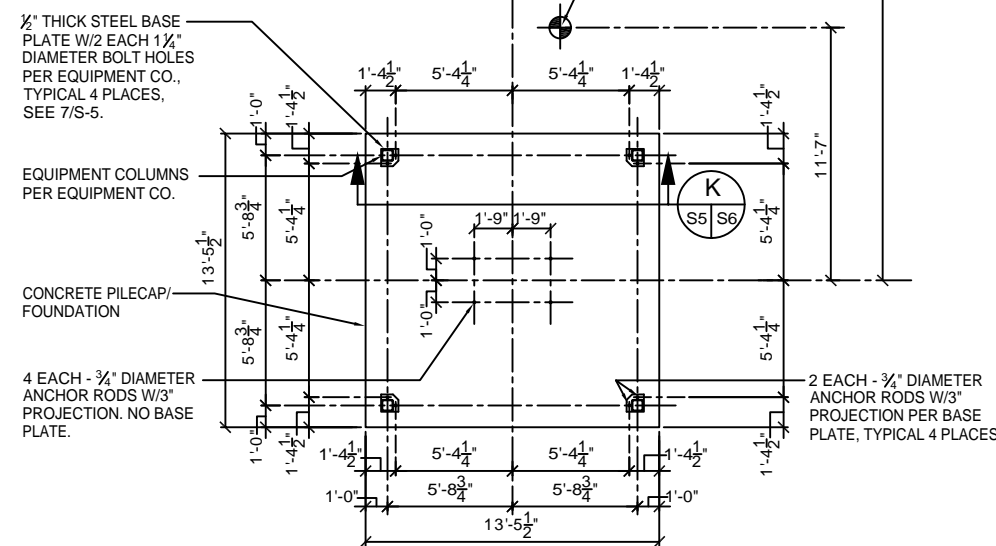
BASE PLATE DETAIL 6
SCALE: 1"=1"
(TYPICAL - 6 PLACES)



**CON-E-CO
BASE PLATE DETAIL 7**
SCALE: 1"=1"
(TYPICAL - 4 PLACES)



PLANT PILE CAP & COLUMN BASE FOUNDATION PLAN
SCALE: 1/4"=1"



RECEIVING HOPPER FOUNDATION PLAN
SCALE: 1/4"=1"