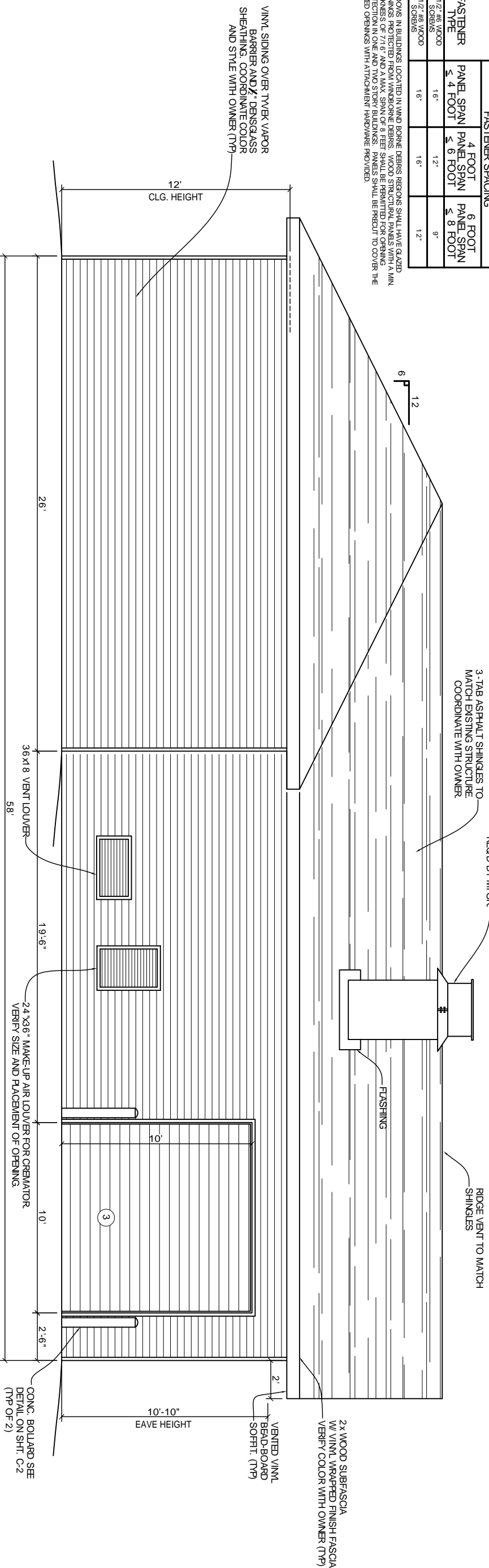


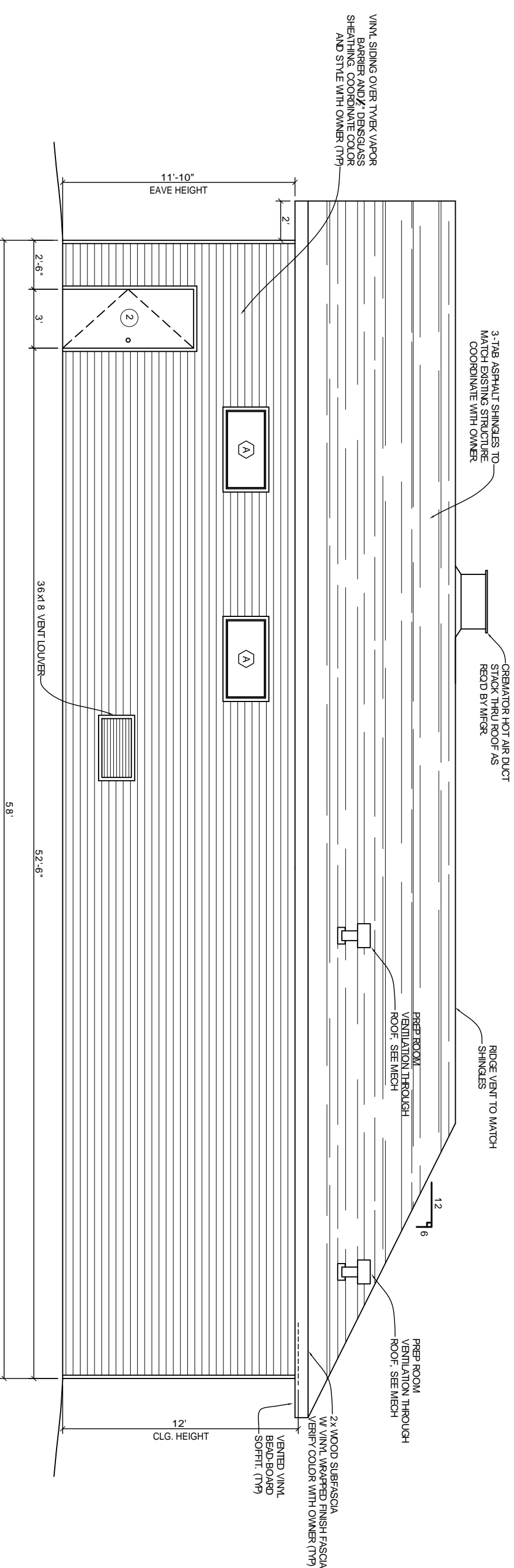
OPENING PROTECTION FROM WINDBORNE DEBRIS			
FASTENING SCHEDULE FOR WOOD STRUCTURAL PANELS			
FASTENER TYPE	FASTENER SPACING		
	2-1/2" x 4" WOOD SCREWS	16"	12"
2-1/2" x 6" WOOD SCREWS	16"	12"	9"

WINDOWS IN BUILDINGS LOCATED IN WIND BORNE DEBRIS REGIONS SHALL HAVE GLAZED OPENINGS PROTECTED FROM WINDBORNE DEBRIS. WOOD STRUCTURAL PANELS WITH A MIN. PROTECTIVE SPAN OF 8 FEET SHALL BE PERMITTED FOR OPENING PROTECTION. WINDBORNE DEBRIS PROTECTION SHALL BE PROVIDED TO COVER THE GLAZED OPENINGS WITH ATTACHMENT HARDWARE PROVIDED.

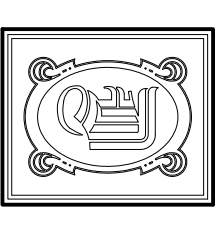
NOTE  
INSTALL ALL COMPONENTS AND CLADDING IN ACCORDANCE WITH SCHEDULES AND NOTES ON SHT. A-7



**SOUTH ELEVATION**  
SCALE 3/8" = 1'-0"



**NORTH ELEVATION**  
SCALE 3/8" = 1'-0"



**DAMMON**  
ENGINEERING, INC.  
CHIEF ENGINEER  
EMMETT  
DAMMON, P.E.  
CHIEF ARCHITECT  
ROBERT  
WILTSE

1095 FLORIDA AVENUE  
SLIDELL, LA. 70456  
OFFICE: 985-649-5632  
FAX: 985-641-5950

WEBSITE:  
WWW.DAMMONENGINEERING.COM  
EMAIL:  
DAMMONING@BLSOUTH.NET

ARCHITECTURE  
ENGINEERING  
STUDIES  
PLANNING  
INVESTIGATION  
EXPERT WITNESS

**NEW  
CREMATORY  
AND EMBALMING  
FACILITY**

HONAKER FUNERAL  
HOME  
TERRY TRANCHINA  
1751 W. GAUSE BLVD  
SLIDELL, LA

**EXTERIOR  
ELEVATIONS**

REV: 12-04-09

SCALE: AS NOTED

JOB#: 1999

DATE: 6-9-09

SHEET 11

**A-5**

OF 19