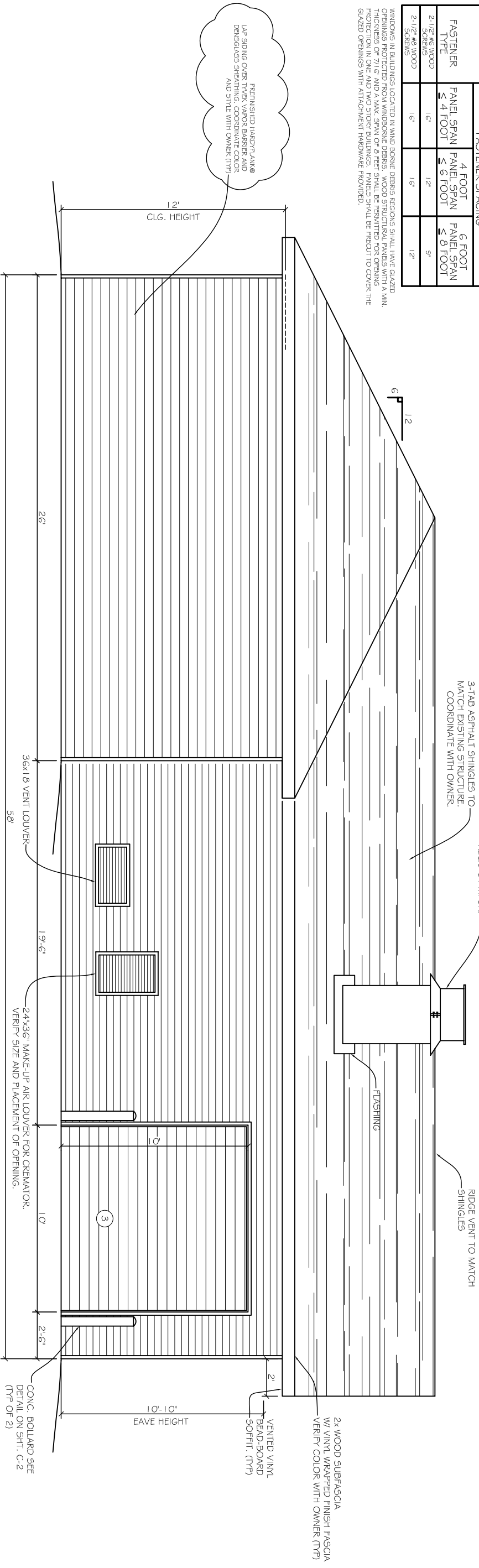


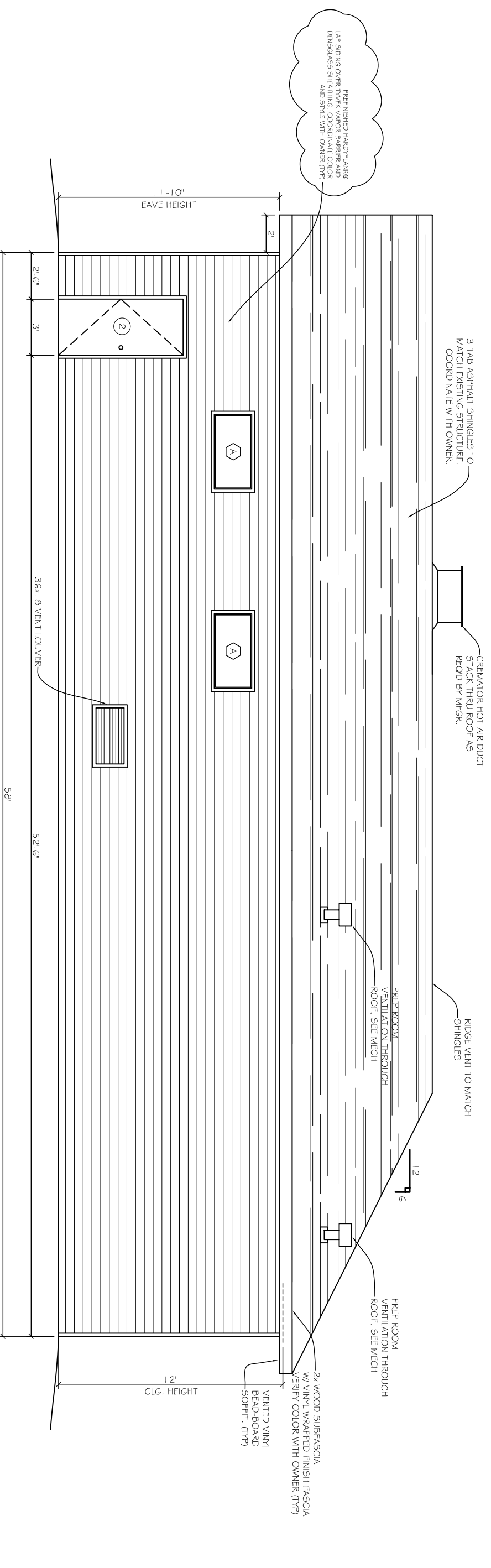
OPENING PROTECTION FROM WINDBORNE DEBRIS FASTENING SCHEDULE FOR WOOD STRUCTURAL PANELS		
FASTENER SPACING:		
FASTENER TYPE	PANEL SPAN ≤ 4 FOOT	4 FOOT PANEL SPAN ≤ 6 FOOT
2-1/2" x 4" WOOD SCREWS	16"	12"
2-1/2" x 4" WOOD SCREWS	16"	9"

WINDOWS IN BUILDINGS LOCATED IN WIND BORNE DEBRIS REGIONS SHALL HAVE GLAZED OPENINGS PROTECTED FROM WINDBORNE DEBRIS BY INSTALLING WINDBORNE DEBRIS PROTECTION IN ONE AND TWO STORY BUILDINGS. PANELS SHALL BE PRECUT TO COVER THE GLAZED OPENINGS WITH ATTACHMENT HARDWARE PROVIDED.

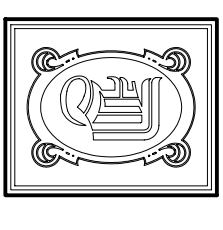
NOTE: INSTALL ALL COMPONENTS AND CLADDING IN ACCORDANCE WITH SCHEDULES AND NOTES ON SHIT. A-7



**SOUTH ELEVATION**  
SCALE: 3/8" = 1'-0"



**NORTH ELEVATION**  
SCALE: 3/8" = 1'-0"



**DAMMON**  
ENGINEERING, INC.  
CHIEF ENGINEER  
EMMETT  
DAMMON, P.E.  
CHIEF ARCHITECT  
ROBERT  
WILTSE

1095 FLORIDA AVENUE  
SLIDELL, LA. 70458  
OFFICE: 985-643-5632  
FAX: 985-641-5950  
WEBSITE:  
WWW.DAMMONENGINEERING.COM  
EMAIL:  
DAMMONENG@BELLSOUTH.NET

ARCHITECTURE  
ENGINEERING  
STUDIES  
PLANNING  
INVESTIGATION  
EXPERT WITNESSES

**NEW**  
CREMATORY  
AND EMBALMING  
FACILITY

HONAKER FUNERAL  
HOME  
TERRY TRANCHINA  
1751 W. GAUSE BLVD.  
SLIDELL, LA

**EXTERIOR**  
ELEVATIONS

REV: 12-04-09  
6-2-10  
SCALE: A5 NOTED  
JOB#: 1999  
DATE: 6-9-09

SHEET 11  
**A-5**  
OF 19