



DAMMON
ENGINEERING, INC.

CHIEF ENGINEER
EMMETT
DAMMON, P.E.

CHIEF ARCHITECT
ROBERT
WILTSE

1095 FLORIDA AVENUE
SLIDELL, LA, 70456
OFFICE: 985-649-5832
FAX: 985-641-15950

WEBSITE:
WWW.DAMMONENGINEERING.COM
EMAIL:
DAMMONENG@BLSOUTH.NET

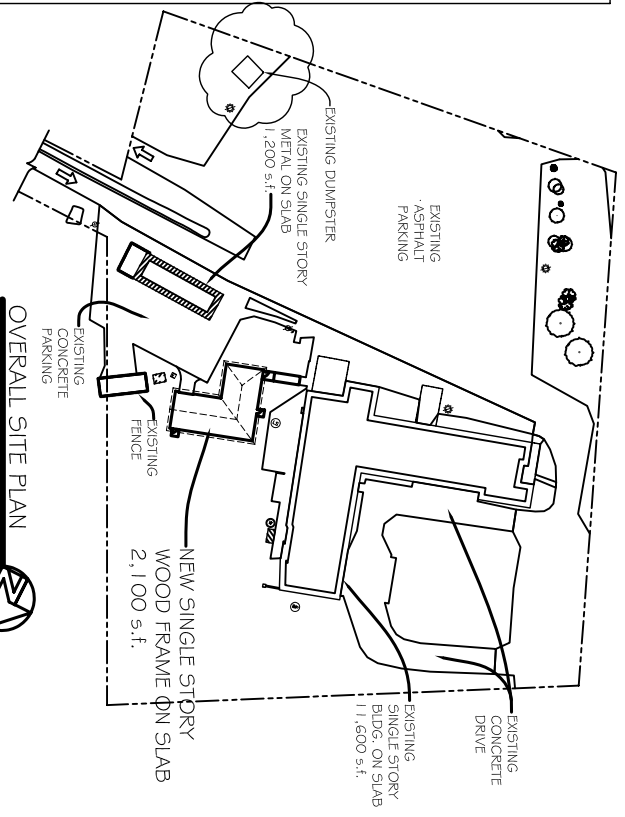
ARCHITECTURE
ENGINEERING
STUDIES
PLANNING
INVESTIGATION
EXPERT WITNESS

NEW
CREMATION
AND EMBALMING
FACILITY

HONAKER FUNERAL
HOME
TERRY TRANCHINA
1751 W. GAUSE BLVD
SLIDELL, LA

SITE
PLAN

REV: 6-2-10
SCALE: AS NOTED
JOB#: 1999
DATE: 6-9-09
SHEET 2



OVERALL SITE PLAN
N.T.S.



LEGEND

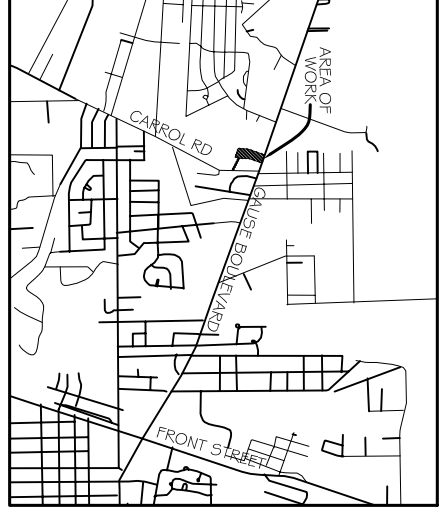
- PROPERTY LINE
- NEW BLDG. FOOTPRINT
- NEW FENCE
- NEW DRAINAGE CATCH BASIN
- TRAFFIC FLOW DIRECTION

PARKING REQUIREMENTS
EXISTING ASPHALT PARKING SHALL
SERVE NEW CREMATORY BUILDING

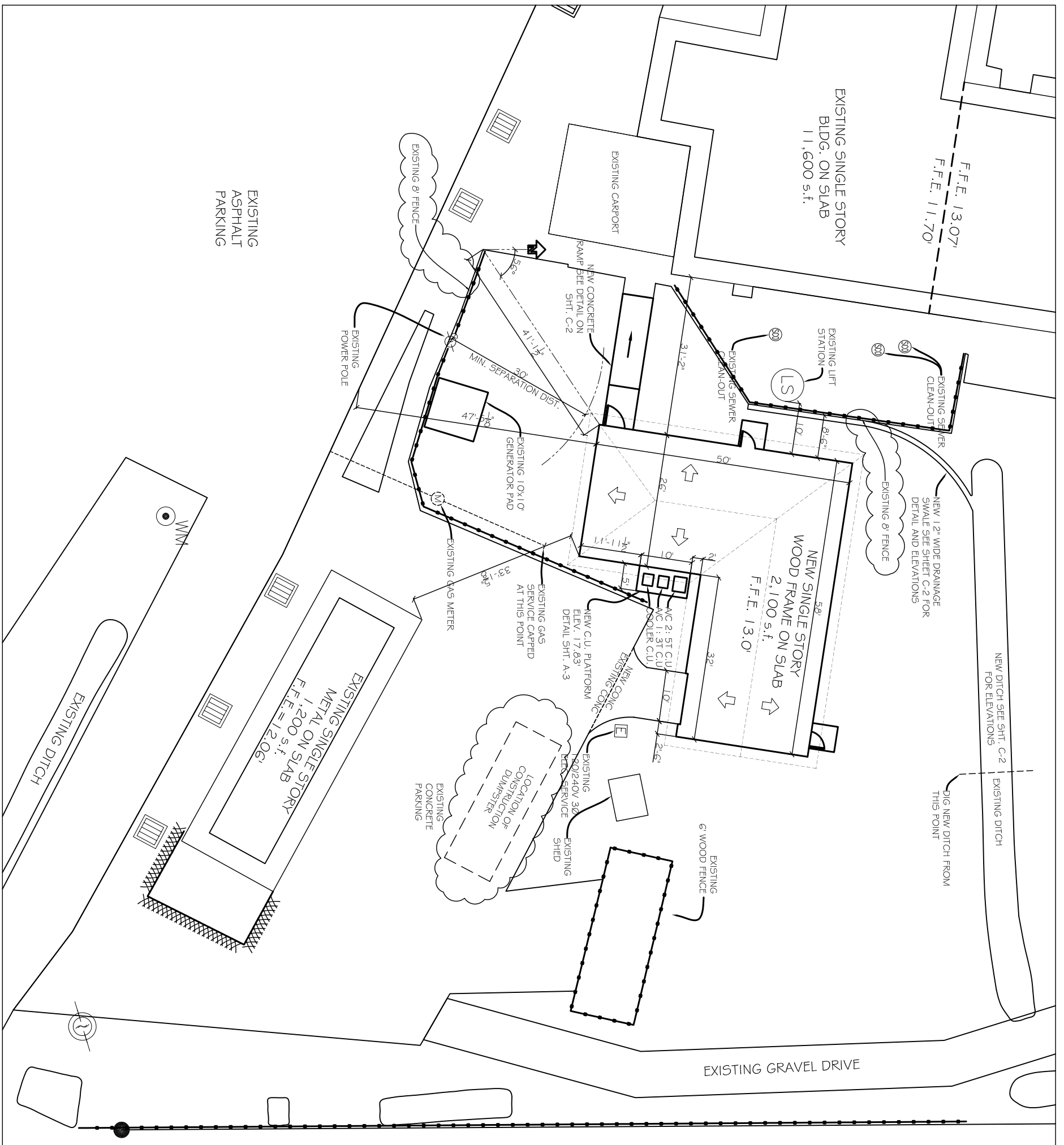
SITE LIGHTING
EXTERIOR LIGHTING SHALL BE SHADED OR INWARDLY
DIRECTED IN SUCH A MANNER SO THAT NO DIRECT
LIGHTING OR GLARE BE CAST BEYOND THE PROPERTY
LINE. THE INTENSITY OF SUCH LIGHTING SHALL NOT
EXCEED ONE FOOT CANDLE AS MEASURED AT THE
ADJUTING PROPERTY LINE. (N/A)

SITE PLAN NOTES

1. ROOFING MATERIAL - 3 TAB ASPHALT SHINGLES
2. SIDING MATERIAL - VARDYRANK® LAP SIDING
3. DUTILITIES: ALL NEW DUTILITIES SHALL BE LAYED UNDERGROUND.



VICINITY MAP
N.T.S.



PARTIAL SITE PLAN
SCALE: 1" = 10'-0"

