

DAMMON ENGINEERING, INC.

CHIEF ENGINEER
EMMETT
DAMMON, P.E.

CHIEF ARCHITECT
ROBERT
WILTSE

1095 FLORIDA AVENUE
SLIDELL, LA. 70458
OFFICE: 985-649-5832
FAX: 985-641-5950

WEBSITE:
WWW.DAMMONENGINEERING.COM
EMAIL:
DAMMONENG@BELLSOUTH.NET

ARCHITECTURE
ENGINEERING
STUDIES
PLANNING
INVESTIGATION
EXPERT WITNESS

GREEN-STATEFARM
RETAIL COMPLEX
GAUSE
BLVD., WEST
SLIDELL, LA

SITE
UTILITIES &
ILLUMINATION
PLAN

REV:

SCALE: AS NOTED

JOB#: 2057

DATE: 04-12-10

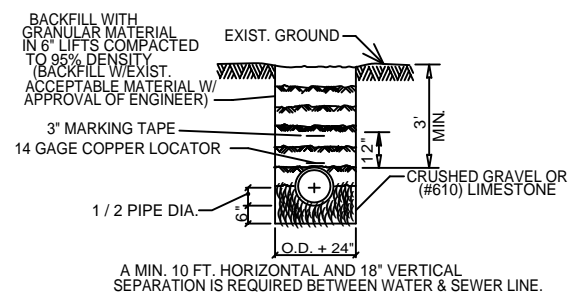
SHEET

C-3

OF

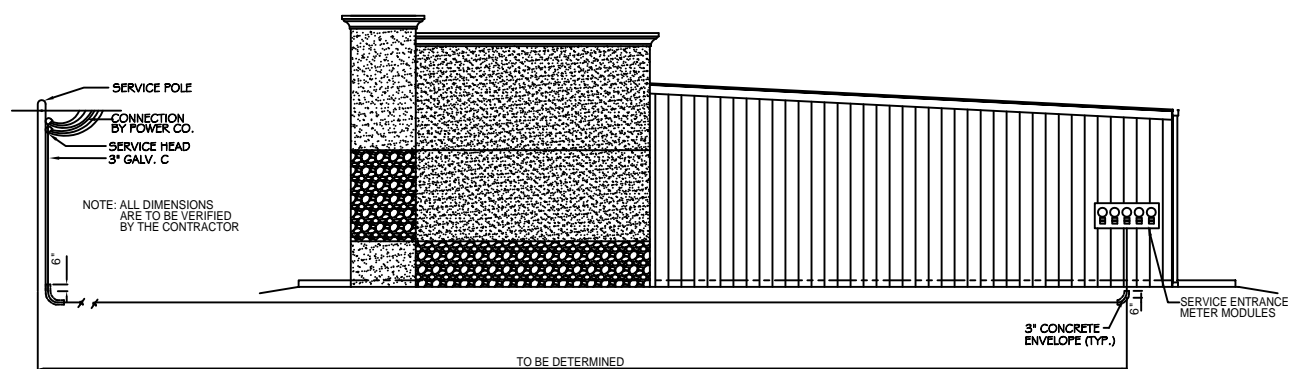
LEGEND

- - PROPERTY LINE
- - BUILDING SETBACK
- - LANDSCAPING SETBACK MINIMUM AND BUFFER ZONE LIMITS AT REAR
- - NEW BUILDING OUTLINE
- W----- - NEW WATER LINE
- S----- - NEW SEWER LINE
- E----- - NEW POWER LINE
- - SILT FENCING DETAIL
- - NEW DRAIN LINE

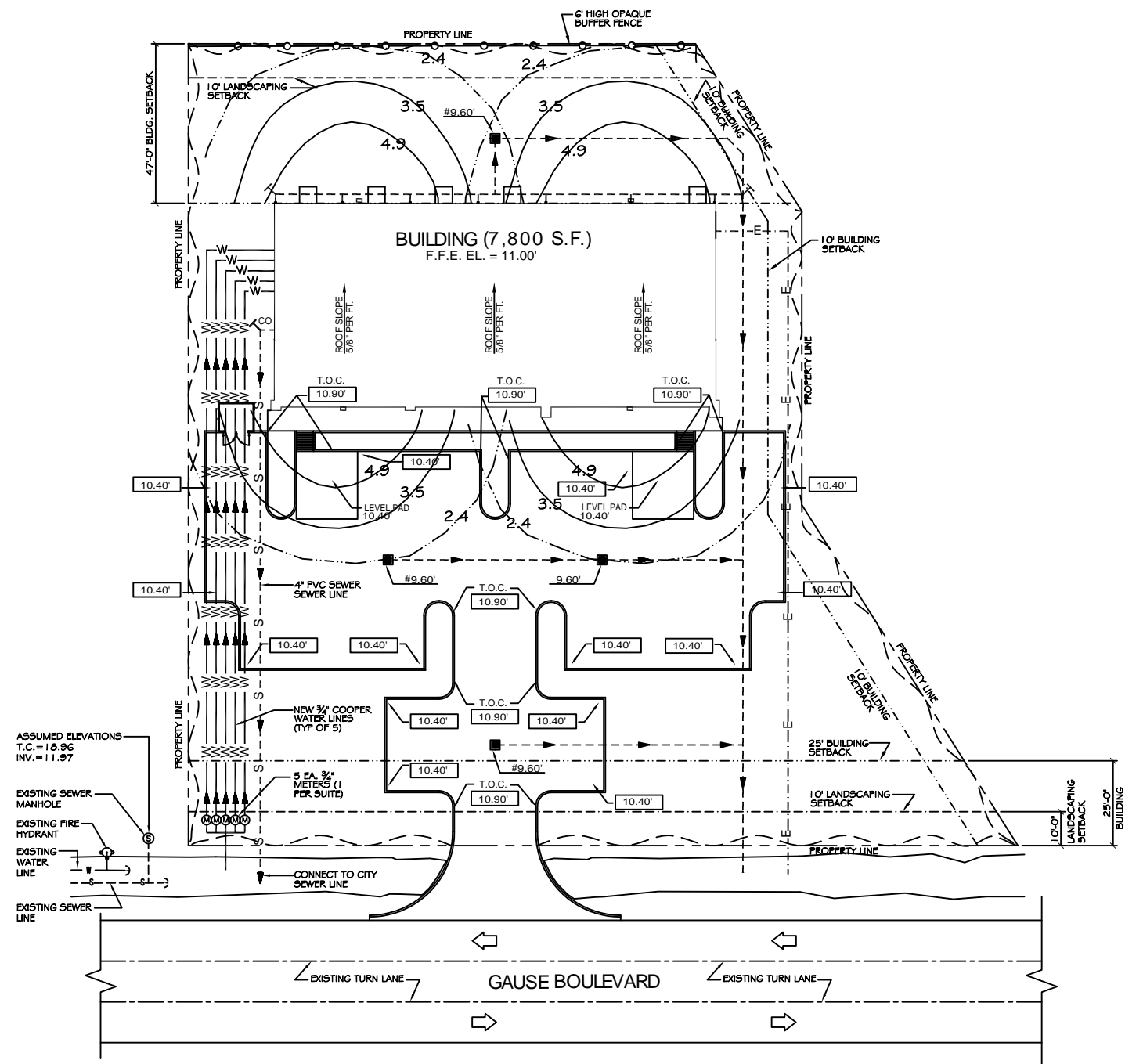


A MIN. 10 FT. HORIZONTAL AND 18" VERTICAL SEPARATION IS REQUIRED BETWEEN WATER & SEWER LINE.

PIPE BEDDING DETAIL FOR SEWER & WATER LINE
N.T.S.



ELECTRICAL SERVICE DETAIL
N.T.S.



SITE UTILITIES & ILLUMINATION PLAN

SCALE: 1"=20'



PRELIMINARY (NOT FOR CONSTRUCTION)