

DAMMON
ENGINEERING, INC.

CHIEF ENGINEER
EMMETT
DAMMON, P.E.

CHIEF ARCHITECT
ROBERT
WILTSE

1095 FLORIDA AVENUE
SLIDELL, LA. 70458
OFFICE: 985-649-5832
FAX: 985-641-5950

WEBSITE:
WWW.DAMMONENGINEERING.COM

EMAIL:
DAMMONENG@BELLSOUTH.NET

ARCHITECTURE
ENGINEERING
STUDIES
PLANNING
INVESTIGATION
EXPERT WITNESS

GREEN-STATEFARM
RETAIL COMPLEX
381-391 GAUSE
BLVD., WEST
SLIDELL, LA

BUILDING
SECTION
AND ROOF
PLAN

REV:

SCALE: AS NOTED

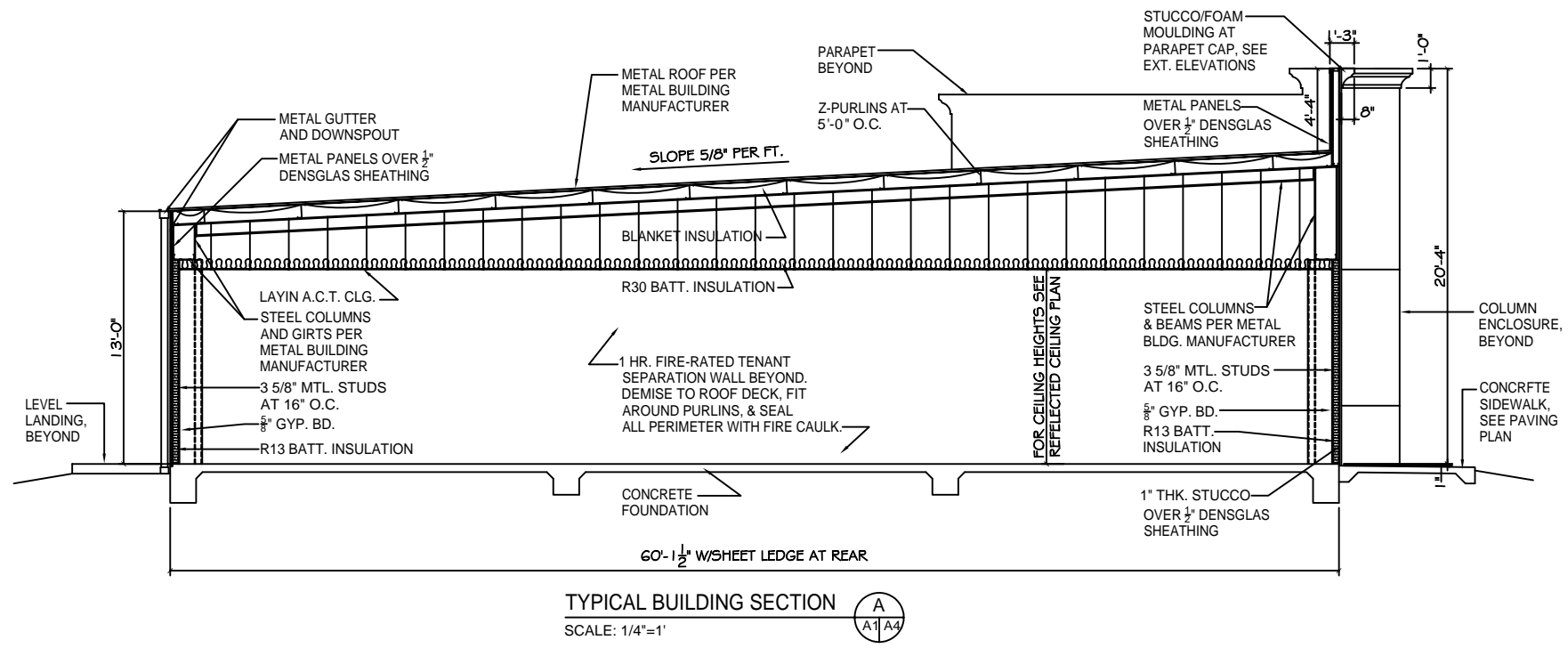
JOB#: 2057

DATE: 06-23-10

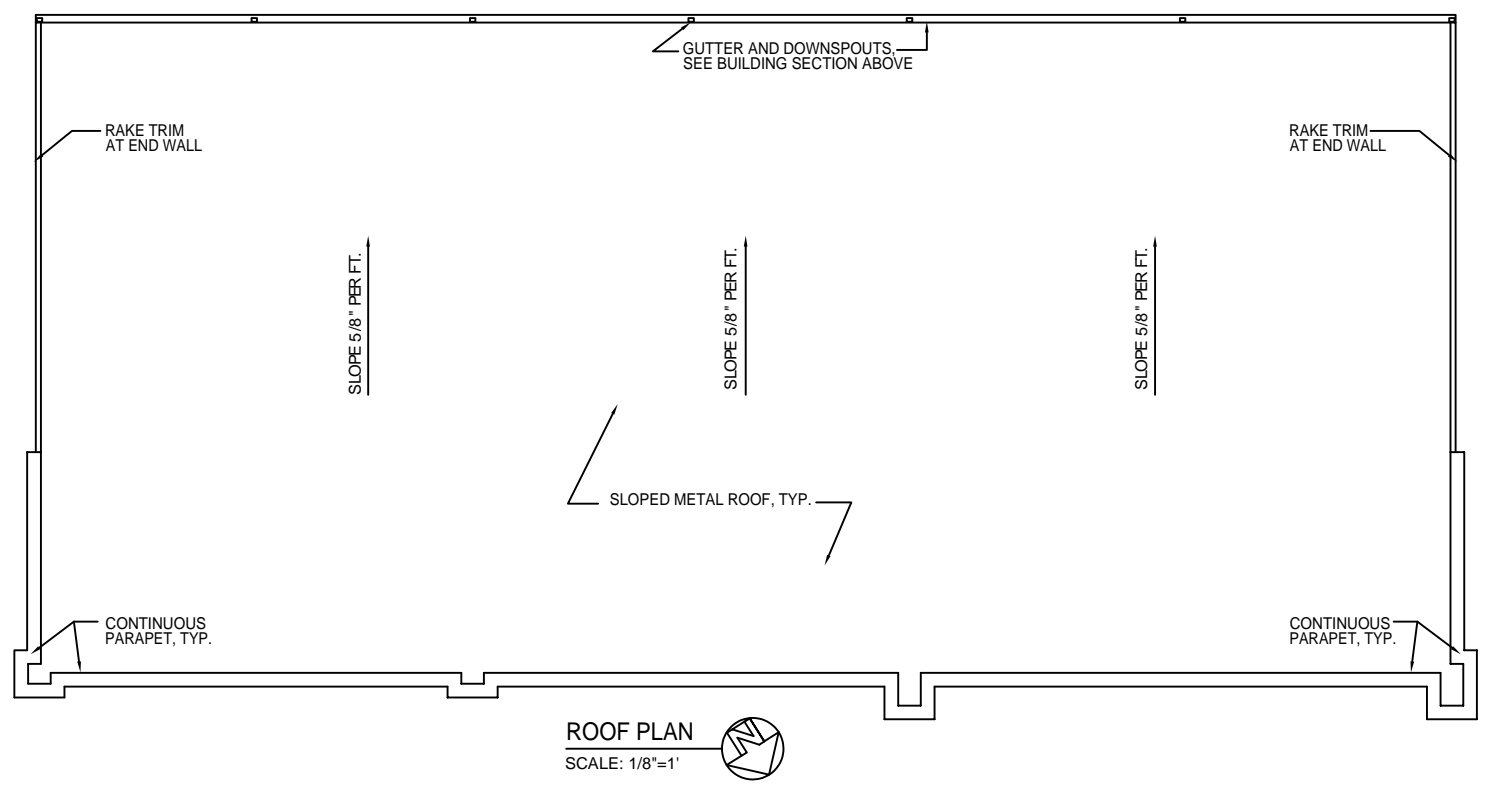
SHEET 11

A-4

OF 19



TYPICAL BUILDING SECTION A-A
SCALE: 1/4"=1'



ROOF PLAN
SCALE: 1/8"=1'