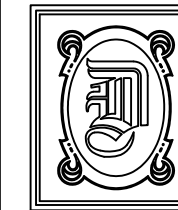
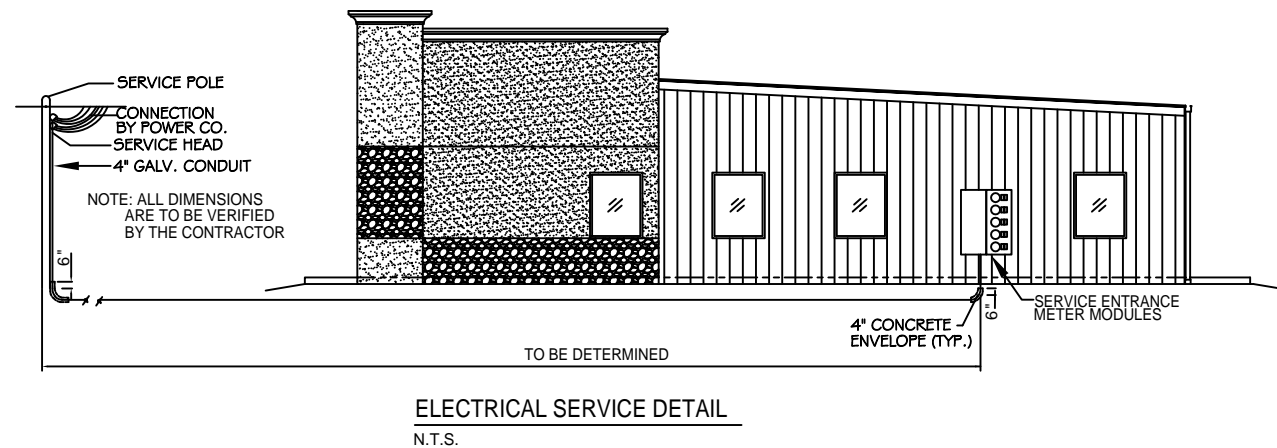
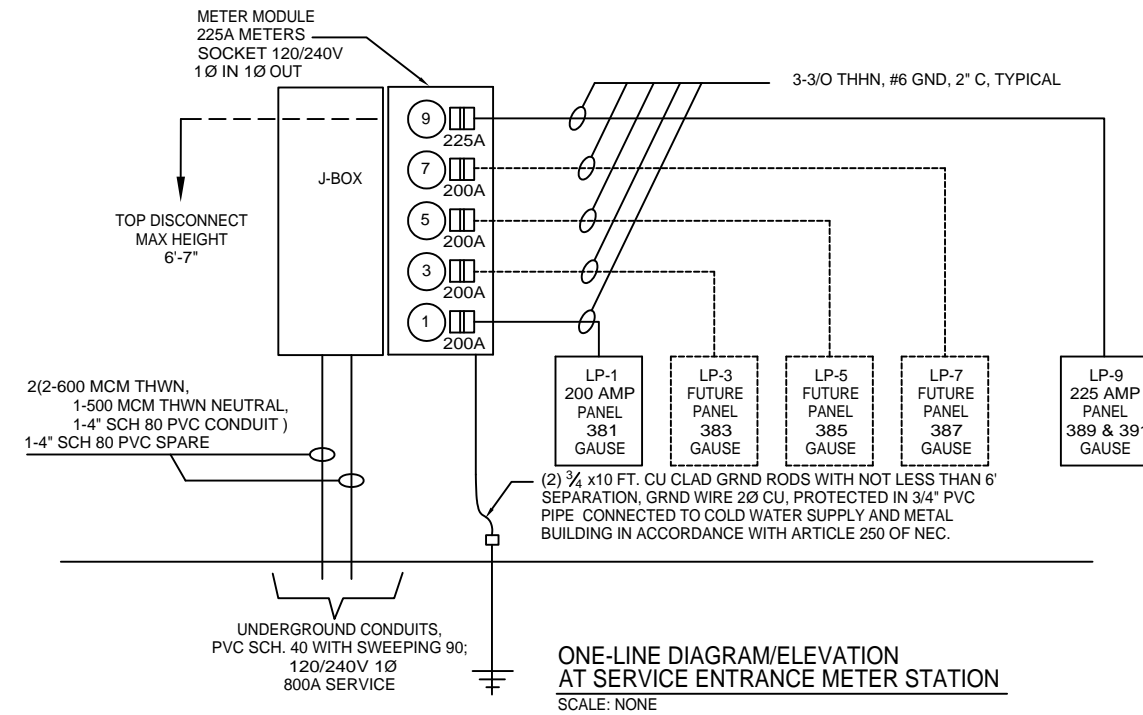


PANEL: LP-9 LOCATION: 389 GAUSE BLVD. COMPUTER/UTILITY ROOM 121 FEEDER SOURCE: CLECO				PANEL: 120/240V, 225A 1Ø, 3W, MLO FLUSH MOUNTED; W/225A MAIN BRKR; W/EQUIPMENT GND BAR; 22,000 AIC					
QCT. NO.	THHN SIZE	LOAD DESCRIPTION LOCATION	BREAKER AMP POLE	LOAD (VA) A _B B _P	LOAD (VA) A _B B _P	BREAKER POLE AMP	LOAD DESCRIPTION LOCATION	THHN SIZE	QCT. NO.
1	#6	AHU #1 7.5 KW	45 2	5300	5300	2 45	AHU #2 7.5 KW	#6	2
3	#6			5300	5300				4
5	#6	A/C COMPRESSOR #1 5 TON	60 2	4500	4500	2 60	A/C COMPRESSOR #2	#6	6
7	#6			4500	4500				8
9	#6	WATER HEATER 20 GALLON	30 2	3600	3600	1 20	EMERGENCY LIGHTS	#12	10
11	#12			3600	1250	1 20	RECEPTION 102 CAN LIGHTS & CONFERENCE ROOM 106 LIGHTS	#12	12
13	#12	WAITING AREA 101 RECEPTACLES	20 1	960	1120	1 20	RECEPTION 102, WORK ROOM 103, AND AGENTS ASSISTANT 104 RECEPTACLES	#12	14
15	#12	CORRIDORS 105, 114, 118, 125, AND HVAC DECK RECEPTACLES	20 1	1120	1120	1 20	CONFERENCE ROOM 106 AND STAFF #1 ROOM 107 RECEPTACLES	#12	16
17	#12	STAFF #2 ROOM 108 AND PRODUCTION MANAGER 109 RECEPTACLES	20 1	1120	960	1 20	PRODUCTION MANAGER 109 AND AGENT'S OFFICE 110 RECEPTACLES	#12	18
19	#12	WOMENS 111, MENS 116, WOMENS 117, KITCHEN 118, & EXT. GFI RECEPTACLES	20 1	960	1800	1 20	REFRIGERATOR RECEPTACLE	#12	20
21	#12	KITCHEN 119 AND COMPUTER/UTILITY 121 RECEPTACLES	20 1	1120	1120	1 20	COMPUTER/UTILITY 121, FUTURE OFFICE 122, & STAFF #3 123 RECEPTACLES	#12	22
23	#12	STAFF #3 ROOM 123 AND STAFF #4 ROOM 124 RECEPTACLES	20 1	1120	1200	1 20	AGENT - 110 COMPUTER	#12	24
25	#12	RECEPTION 102 COMPUTERS	20 1	1200	1200	1 20	123 & 124 COMPUTER	#12	26
27	#12	102 & 103 COMPUTER	20 1	1200	600	1 20	122 COMPUTER	#12	28
29	#12	103 & 104 COMPUTER	20 1	1200	1800	1 20	COMPUTER ROOM SERVER(S) 121	#12	30
31	#12	106 & 107 COMPUTER	20 1	1200	1200	1 20	106 & 109 COMPUTER	#12	32
33	#12	WAITING AREA 101, WORK ROOM 103, AND AGENT'S ASSISTANT 104 LIGHTS	20 1	1200	900	1 20	ROOMS 111, 112, 113, 115, 116, 117, & 120 LIGHTS	#12	34
35	#12	CORRIDOR 105 AND CORRIDOR 114 LIGHTS	20 1	1080	1080	1 20	KITCHEN 119, COMPUTER/UTILITY 121, OFFICE 122, STAFFS 123 & 124 LIGHTS	#12	36
37	#12	STAFF 107 & 108, PRODUCTION MANAGER 109, & AGENT'S OFFICE 110 LIGHTS	20 1	1260	-	1 20	SPARE	-	38
39	#12	CORRIDOR 118 AND CORRIDOR 125 LIGHTS	20 1	900	-	1 20	SPARE	-	40
41	-	SPARE	20 1	-	-	1 20	SPARE	-	42
				TOTAL CONNECTED LOAD (VA)=78,490					
				A _B =39,660 B _P =38,830					

PANEL: LP-1 LOCATION: 381 GAUSE BLVD. RESTROOM WALL FEEDER SOURCE: CLECO				PANEL: 120/240V, 200A 1Ø, 3W, MLO FLUSH MOUNTED; W/200A MAIN BRKR; W/EQUIPMENT GND BAR; 22,000 AIC					
QCT. NO.	THHN SIZE	LOAD DESCRIPTION LOCATION	BREAKER AMP POLE	LOAD (VA) A _B B _P	LOAD (VA) A _B B _P	BREAKER POLE AMP	LOAD DESCRIPTION LOCATION	THHN SIZE	QCT. NO.
1	#6	AHU #3 10 KW	60 2	6700	3400	2 45	A/C COMPRESSOR #3 4 TON	#6	2
3	#6			6700	3400				4
5	#6	WATER HEATER 20 GALLON	30 2	3600	1120	1 20	SUITE 1 RECEPTACLES	#12	6
7	#6			3600	1120	1 20	SUITE 1 RECEPTACLES	#12	8
9	#12	SUITE 1 WALL AND HVAC DECK ABOVE RESTROOM RECEPTACLES	20 1	640	320	1 20	SUITE 1 RESTROOM AND EXTERIOR GFI RECEPTACLES	#12	10
11	#12	SUITE 1 INTERIOR FLUORESCENT LIGHTS	20 1	1080	900	1 20	SUITE 1 INTERIOR FLUORESCENT LIGHTS	#12	12
13	#12	RESTROOM & HVAC DECK LIGHTS	20 1	200	12	1 20	EMERGENCY LIGHTS	#12	14
15	#12	EXIT/EMERGENCY LIGHT COMBO UNIT LIGHTS	20 1	24	100	1 20	EXTERIOR WALL-MOUNTED LIGHTS WITH 90 MIN. BATTERY BACKUP	#12	16
17	#12	EXTERIOR WALL-MOUNTED WALL PACK FLOOD LIGHTS	20 1	300	-	1 20	SPARE	#12	18
19	-	SPARE	20 1	-	-	1 20	SPARE	#12	20
21	-	SPARE	20 1	-	-	1 20	SPARE	#12	22
23	-	SPARE	20 1	-	-	1 20	SPARE	#12	24
25	-	SPARE	-	-	-	-	SPARE	-	26
27	-	SPARE	-	-	-	-	SPARE	-	28
29	-	SPARE	-	-	-	-	SPARE	-	30
31	-	SPARE	-	-	-	-	SPARE	-	32
33	-	SPARE	-	-	-	-	SPARE	-	34
35	-	SPARE	-	-	-	-	SPARE	-	36
37	-	SPARE	-	-	-	-	SPARE	-	38
39	-	SPARE	-	-	-	-	SPARE	-	40
41	-	SPARE	-	-	-	-	SPARE	-	42
				TOTAL CONNECTED LOAD (VA)=32,172					
				A _B =15,992 B _P =16,180					



DAMMON
ENGINEERING, INC.

CHIEF ENGINEER
EMMETT
DAMMON, P.E.

CHIEF ARCHITECT
ROBERT
WILTSE

1095 FLORIDA AVENUE
SLIDELL, LA. 70458
OFFICE: 985-649-5832
FAX: 985-641-5950

WEBSITE:
WWW.DAMMONENGINEERING.COM

EMAIL:
DAMMONENG@BELLSOUTH.NET

ARCHITECTURE
ENGINEERING
STUDIES
PLANNING
INVESTIGATION
EXPERT WITNESS

GREEN-STATEFARM
RETAIL COMPLEX
381-391 GAUSE
BLVD., WEST
SLIDELL, LA

ELECTRICAL
SCHEDULES
AND
DIAGRAMS

REV:

SCALE: AS NOTED

JOB#: 2057

DATE: 06-23-10

SHEET 18

E-3

OF 19