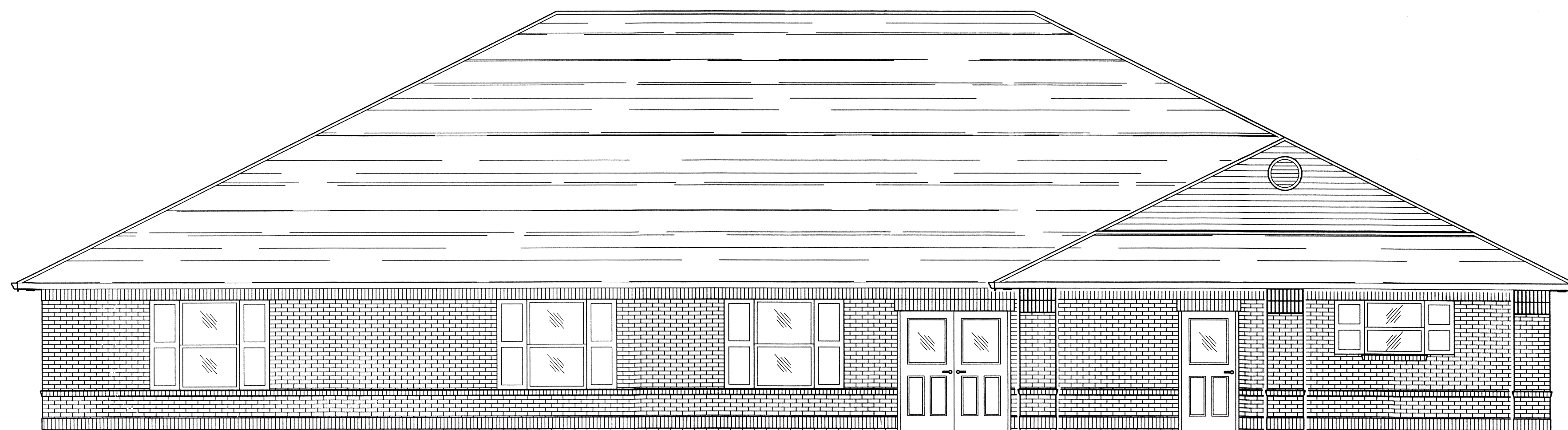




RESIDENTIAL COMMUNITY HOME



**THIS BUILDING SHALL
BE FULLY SPRINKLED**

(FRONT ELEVATION (MAIN ENTRANCE))

**1705 VIOLA ST.
MANDEVILLE, LA**

SQUARE FEET TOTAL: 5,100 SQ. FT.

ZONING A-3

INTERNATIONAL BUILDING CODE 2006 REQUIREMENTS 2009

OCCUPANCY CLASSIFICATION:
~~ASSEMBLY GROUP R-2 (SEC 310.1)~~

OCCUPANT LOAD: (TBL 1004.1.1)
RESIDENTIAL = 200 GROSS SQ.FT. / OCC.
TOTAL LOAD = 5100/200 = 26 OCCUPANTS

EXIT ACCESS REQUIREMENTS: (SEC 1014)
2 EXITS REQUIRED FOR > 50 OCCUPANTS (TBL 1015.1)
4 EXITS PROVIDED
MAXIMUM COMMON PATH OF EGRESS TRAVEL = 250' (TBL 1016.1)

ALLOWABLE HEIGHT AND BLDG. AREA: (TBL 503)
FOUR STORY AND 16,000 SQ.FT.
THIS BLDG 5,100 SQ.FT. / 1 STORY

CONSTRUCTION CLASSIFICATION: (SEC 602.2)
TYPE II B

FIRE RESISTANCE RATING REQUIREMENTS FOR BLDG. ELEMENTS: (TBL 601)
STRUCTURAL FRAME = 0 HRS.
BEARING WALLS (INTERIOR AND EXTERIOR) = 0 HRS.
NON-BEARING WALLS = 0 HRS.
FLOOR CONSTRUCTION = 0 HRS.
ROOF CONSTRUCTION = 0 HRS.

FIRE RESISTANCE RATING REQUIREMENTS FOR EXTERIOR WALLS: (TBL 602)
EXTERIOR WALLS WITH >= 30' FIRE SEPARATION DISTANCE = 0 HRS.

MAX. AREA OF EXTERIOR WALL OPENINGS: (TBL 704.8)
BLDG. WITH >= 30' FIRE SEPARATION DISTANCE ALLOWED UNLIMITED PROTECTED AND UNPROTECTED OPENINGS

AUTOMATIC SPRINKLER SYSTEM REQUIREMENTS: (SEC 903)
THIS BLDG. DOES REQUIRE AN AUTOMATIC SPRINKLER SYSTEM PER SECTION 903.2.B

FIRE PROTECTION SYSTEM REQUIREMENTS: (SEC 907)
THIS BLDG. DOES NOT REQUIRE AN APPROVED FIRE PROTECTION SYSTEM IN ACCORDANCE WITH SEC 907.2.9 EXCEPTION 16.8.1
MANUAL FIRE ALARM SYSTEM

CONSTRUCTION DOCUMENTS: (SEC 1603)
THIS BLDG. SHALL BE DESIGNED IN ACCORDANCE WITH IBC SECTION 1609 AS A FULLY ENCLOSED BLDG. USING THE FOLLOWING INFORMATION:

WIND DESIGN DATA:
DETERMINATION OF WIND LOADS SHALL BE IN ACCORDANCE WITH IBC SEC 1609.4
BASIC WIND SPEED (3 SECOND GUSTS) = 30 MPH (FIG 1609)
IMPORTANCE FACTOR: CATEGORY II BLDG., I_E = 1.0, I_S = 1.0, I_W = 1.0 (TBL 1604.5)
EXPOSURE B
DESIGN WIND PRESSURE (ASCE 7-05 FIG. 6-2): 33.6 PSF
INTERNAL PRESSURE COEFFICIENT (ASCE 7-05 FIG. 6-5): ± 0.18
LIVE LOADS: (SEC 1607)
PRIVATE ROOMS AND CORRIDORS SERVING THEM (TBL 1607.1): 40 PSF
PUBLIC ROOMS AND THE CORRIDORS SERVING THEM (TBL 1607.1): 100 PSF
OFFICE (TBL 1607.1): 50 PSF
ROOF LIVE LOAD (TBL 1607.1) = 20 PSF UNIFORM, 300 LB. CONCENTRATED
GROUND SNOW LOAD (FIG. 1608.2) = 0 PSF

BASED ON THE SURVEY OF THIS PROPERTY BY J.V. BURKES AND ASSOCIATES, INC.
THIS PROPERTY IS NOT A SPECIAL FLOOD HAZARD AREA.
F.I.R.M. COMMUNITY MAP NO. 225205 0245 C, DATE SEPTEMBER 17, 1989
FLOOD ZONE: C AND B; BASE FLOOD ELEVATION N/A.
ELEVATIONS REFER TO NAVD 1929 DATUM.

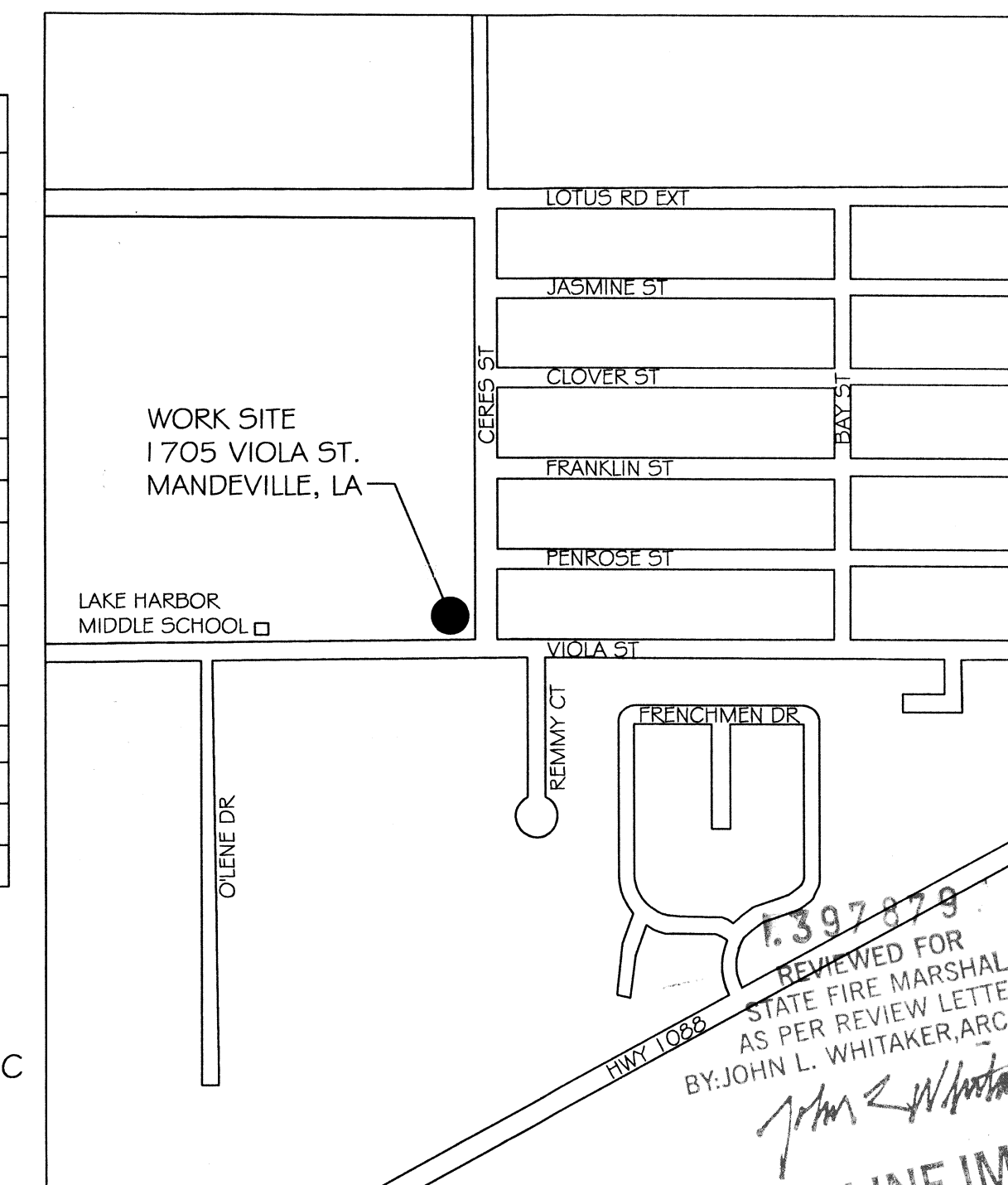
SMOKE ALARMS
907.2.9.2
907.8.11

FIRE ALARM SYSTEM
REQUIRED
BY NFPA 01:26.3.4

INDEX OF DRAWINGS		
SHT#	DWG#	DRAWING NAME
1		COVER SHEET
2	C-1	COPY OF SURVEY
3	C-2	SITE PLAN
4	S-1	FOUNDATION PLAN
5	A-1	FLOOR PLAN
6	A-2	BUILDING SECTION AND DETAILS
7	A-3	ROOF PLAN
8	A-4	EXTERIOR ELEVATIONS
9	A-5	EXTERIOR ELEVATIONS
10	A-6	SCHEDULES AND NOTES
11	F-1	STRAPPING DETAILS & NOTES
12	M-1	MECHANICAL PLAN
13	M-2	MECHANICAL NOTES
14	E-1	ELECTRICAL POWER PLAN
15	E-2	ELECTRICAL LIGHTING PLAN
16	E-3	ELECTRICAL DETAILS, NOTES AND SCHEDULES
17	P-1	PLUMBING PLAN

DESIGN CRITERIA

THE CONSTRUCTION FOR SAID RESIDENCE, WHERE BASIC WIND SPEED IS 130 MILES PER HOUR, IS DESIGNED IN ACCORDANCE WITH:
AMERICAN FOREST AND PAPER ASSOCIATION (AF&PA) WOOD FRAME CONSTRUCTION MANUAL FOR ONE AND TWO FAMILY DWELLINGS (WFCM) 2001 EDITION AS WELL AS THE INTERNATIONAL RESIDENTIAL CODE (IRC) 2006 EDITION



VICINITY MAP
N.T.S.

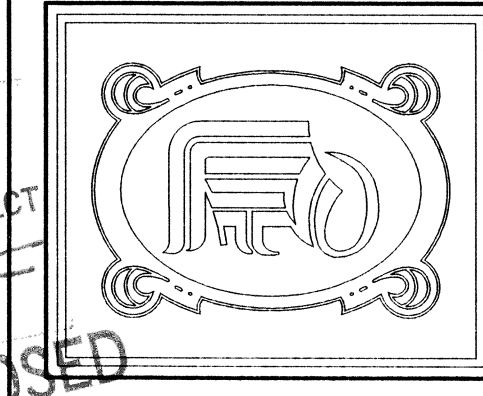
1.397.879
REVIEWED FOR
STATE FIRE MARSHAL
AS PER REVIEW LETTER
BY JOHN L. WHITAKER, ARCHITECT

DEADLINE IMPOSED

STAR C WEST
RESIDENT. COMMUNITY HOME
1705 VIOLA ST
MANDEVILLE, LA

DATE: 04-08-11
JOB NO. 2081

DAMMON ENGINEERING, INC.
554 OLD SPANISH TRAIL OFFICE: (985) 649-5832
SLIDELL, LA 70458 FAX: (985) 641-5950
WEBSITE: WWW.DAMMONENGINEERING.COM
EMAIL: DAMMONENG@BELLSOUTH.NET



SHEET 1
OF 17

Robert Walker