

**DAMMON
ENGINEERING, INC.**

CHIEF ENGINEER
EMMETT
DAMMON, P.E.

CHIEF ARCHITECT
ROBERT
WILTSE

1095 FLORIDA AVENUE
SLIDELL, LA. 70458
OFFICE: 985-649-5832
FAX: 985-641-5950

WEBSITE:
WWW.DAMMONENGINEERING.COM

EMAIL:
DAMMONENI@BELLSOUTH.NET

ARCHITECTURE
ENGINEERING
STUDIES
PLANNING
INVESTIGATION
EXPERT WITNESS

NEW
LIVING
FACILITY

STARC WEST
1705 VIOLA ST
MANDEVILLE, LA

FLOOR
PLAN

REV:

SCALE: AS NOTED

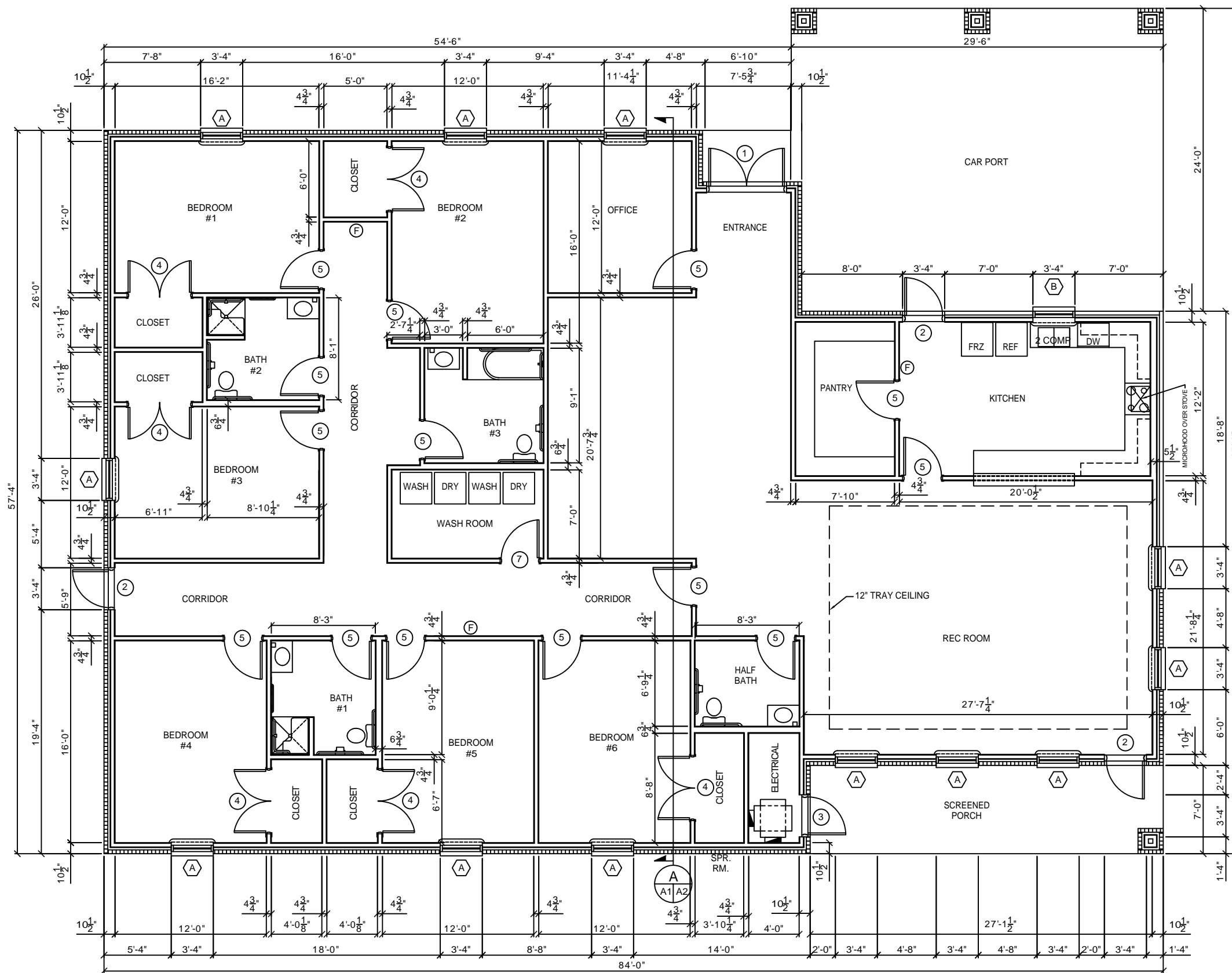
JOB#: 2081

DATE: 11-4-10

SHEET 5

A-1

OF 17



FLOOR PLAN
SCALE: 1/4"=1'



FOR GENERAL NOTES,
SEE SHT A-6