

**DAMMON
ENGINEERING, INC.**

CHIEF ENGINEER
EMMETT
DAMMON, P.E.

CHIEF ARCHITECT
ROBERT
WILTSE

1095 FLORIDA AVENUE
SLIDELL, LA. 70458
OFFICE: 985-649-5832
FAX: 985-641-5950

WEBSITE:
WWW.DAMMONENGINEERING.COM

EMAIL:
DAMMONENG@BELLSOUTH.NET

ARCHITECTURE

ENGINEERING

STUDIES

PLANNING

INVESTIGATION

EXPERT WITNESS

NEW
LIVING
FACILITY

STARC WEST
1705 VIOLA ST
MANDEVILLE, LA

EXTERIOR
ELEVATIONS

REV:

SCALE: AS NOTED

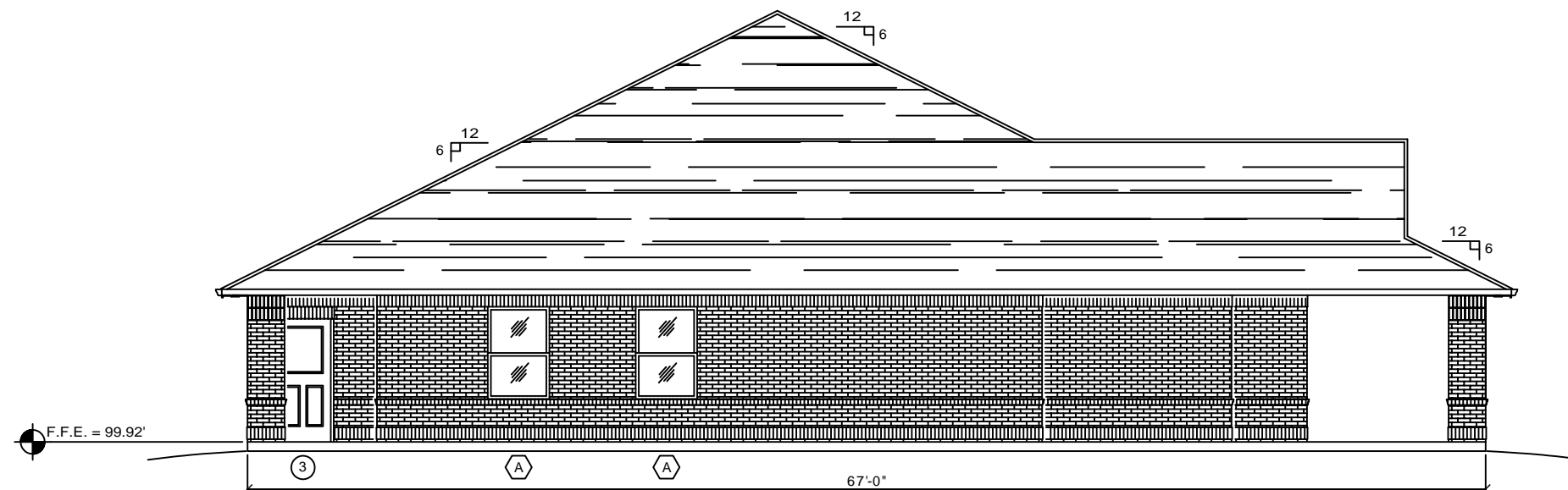
JOB#: 2081

DATE: 11-4-10

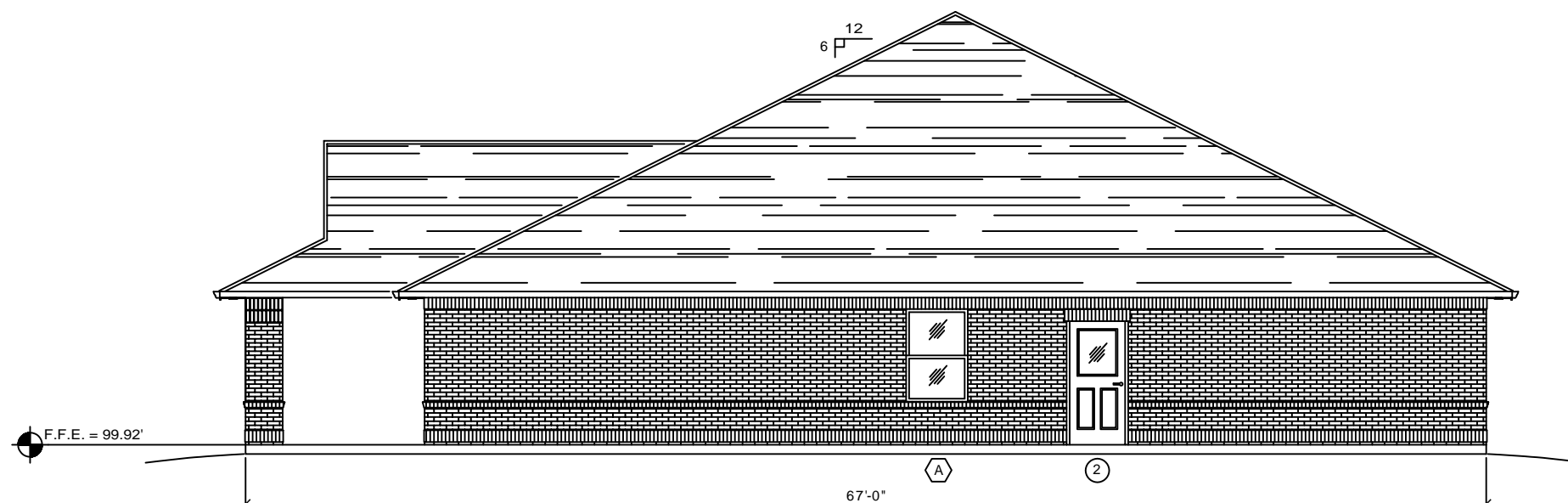
SHEET 9

A-5

OF 17



LEFT SIDE ELEVATION
SCALE: 1/4"=1'



RIGHT SIDE ELEVATION
SCALE: 1/4"=1'