

DAMMON
ENGINEERING, INC.

CHIEF ENGINEER
EMMETT
DAMMON, P.E.

CHIEF ARCHITECT
ROBERT
WILTSE

1095 FLORIDA AVENUE
SLIDELL, LA. 70458
OFFICE: 985-649-5832
FAX: 985-641-5950

WEBSITE:
WWW.DAMMONENGINEERING.COM

EMAIL:
DAMMONENG@BELLSOUTH.NET

ARCHITECTURE

ENGINEERING

STUDIES

PLANNING

INVESTIGATION

EXPERT WITNESS

NEW
LIVING
FACILITY

STARC WEST
1705 VIOLA ST
MANDEVILLE, LA

COPY OF
SURVEY

REV:

SCALE: AS NOTED

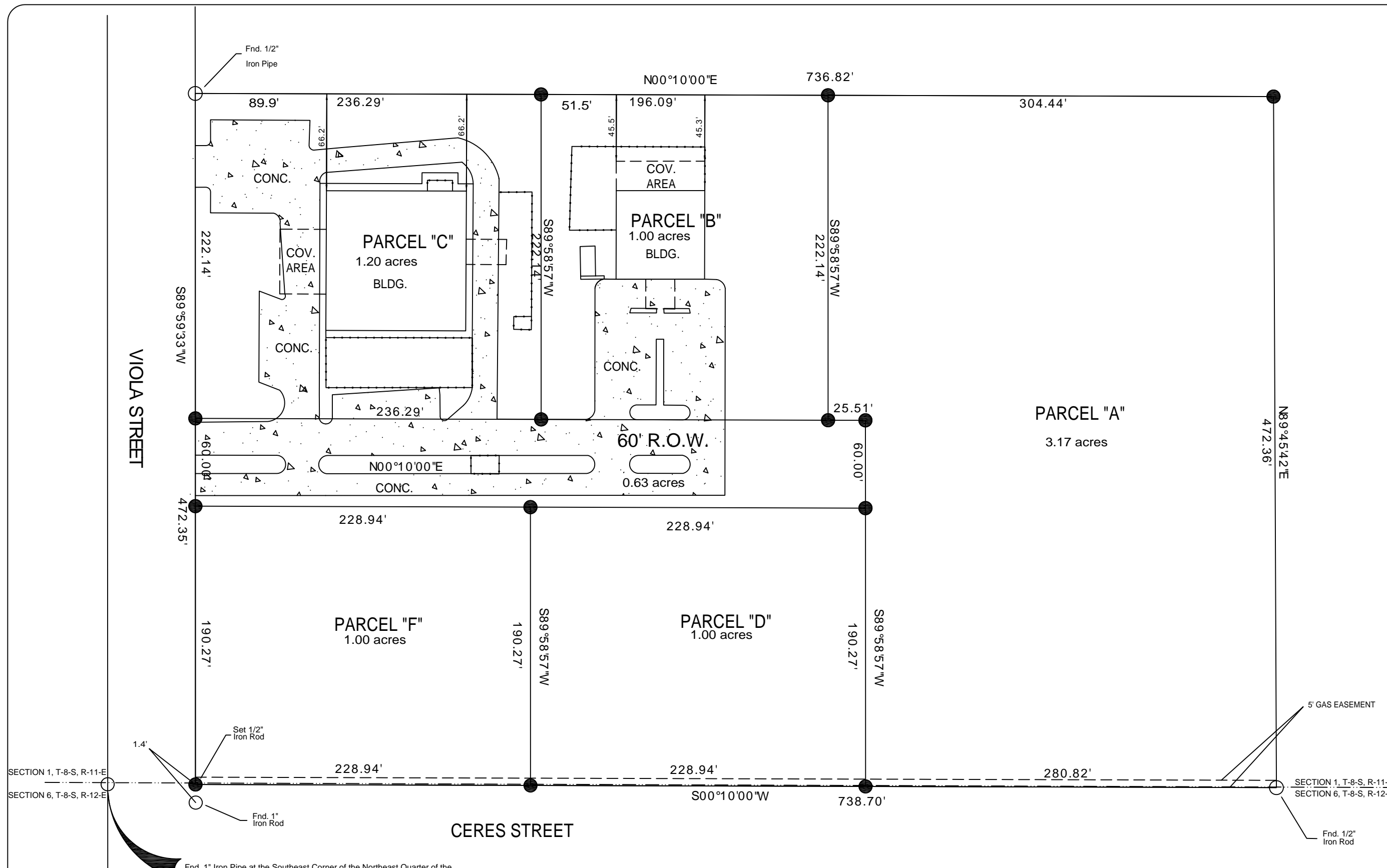
JOB#: 2081

DATE: 11-4-10

SHEET 2

C-1

OF 17



Fnd. 1" Iron Pipe at the Southeast Corner of the Northeast Quarter of the Northeast Quarter of Section 1, T-8-S, R-11-E, St. Tammany Parish, Louisiana.

COPY OF SURVEY
SCALE: 1"=30'-0"



LEGEND

● = Set 1/2" Iron Rod

LEGAL DESCRIPTION

A RESUBDIVISION OF AN 8.00 ACRE PARCEL OF LAND INTO PARCELS "A", "B", "C", "D", "E" & "F" AND A 60' R.O.W., SITUATED IN SECTION 1, T-8-S, R-11-S, ST. TAMMANY PARISH, LOUISIANA.