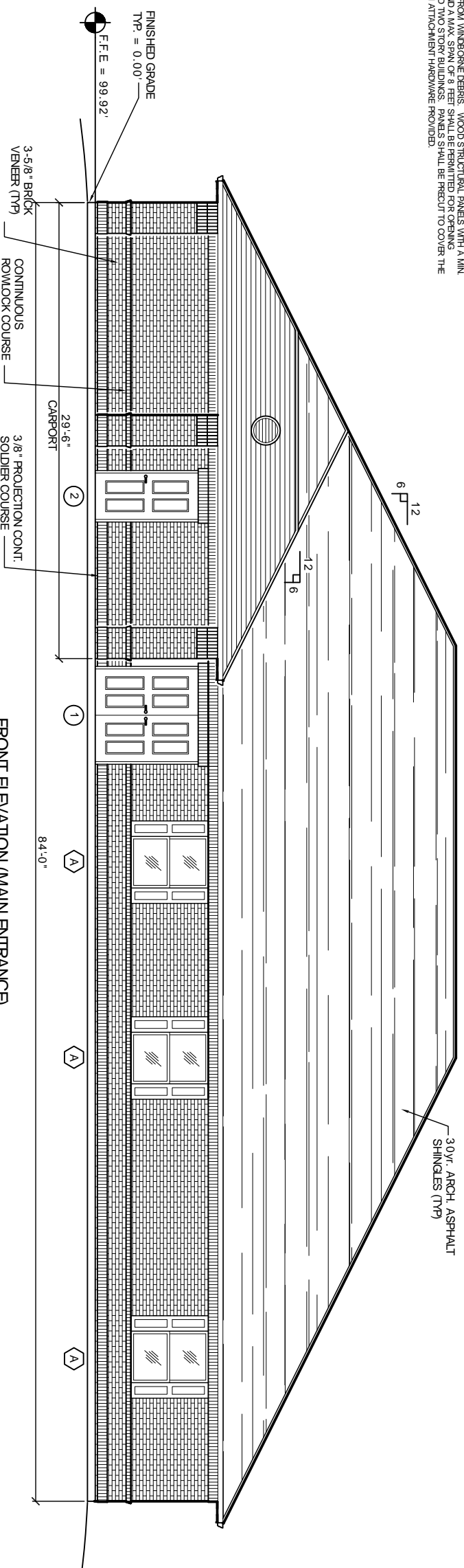
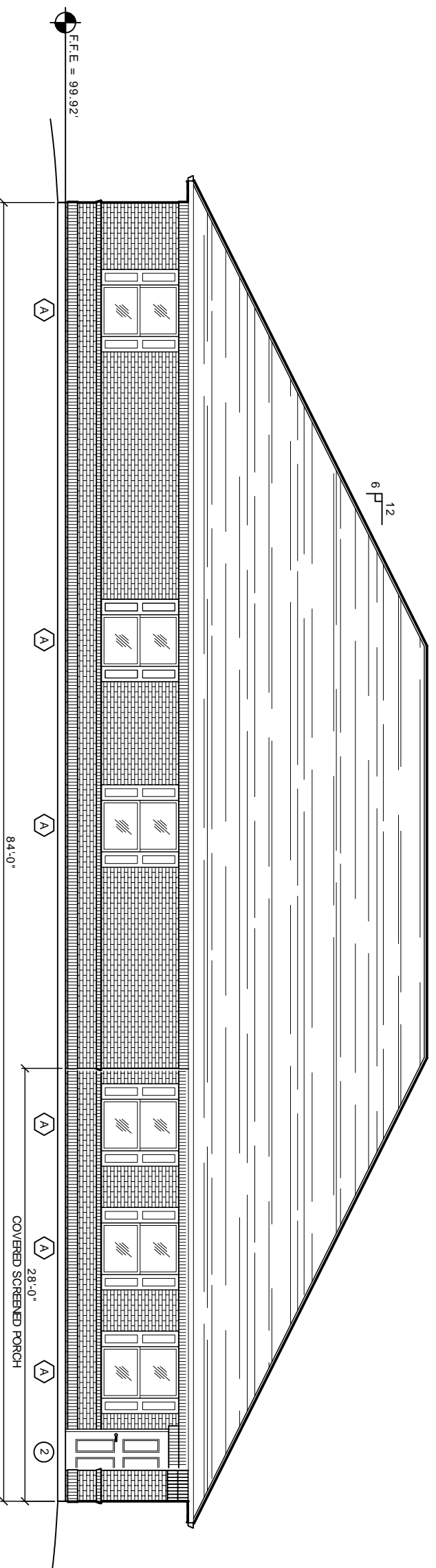


OPENING PROTECTION FROM WINDBORNE DEBRIS			
FASTENING SCHEDULE FOR WOOD STRUCTURAL PANELS			
FASTENER SPACING			
FASTENER TYPE	PANEL SPAN ≤ 4 FOOT	4 FOOT PANEL SPAN ≤ 6 FOOT	6 FOOT PANEL SPAN ≤ 8 FOOT
2-1/2" #8 WOOD SCREWS	16"	12"	9"
2-1/2" #8 WOOD SCREWS	16"	16"	12"

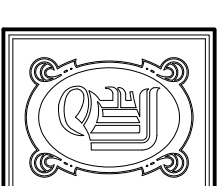
WINDOWS IN BUILDINGS LOCATED IN WIND BORNE DEBRIS REGIONS SHALL HAVE GLAZED OPENINGS PROTECTED FROM WINDBORNE DEBRIS. WOOD STRUCTURAL PANELS WITH A MIN. THICKNESS OF 7/16" AND A MAX. SPAN OF 8 FEET SHALL BE PERMITTED FOR OPENING PROTECTION IN ONE AND TWO STORY BUILDINGS. PANELS SHALL BE PERMIT TO COVER THE GLAZED OPENINGS WITH ATTACHMENT HARDWARE PROVIDED.



FRONT ELEVATION (MAIN ENTRANCE)
SCALE 1/4" = 1'



REAR ELEVATION
SCALE 1/4" = 1'



DAMMON
ENGINEERING, INC.

CHIEF ENGINEER
EMMETT
DAMMON, P.E.
CHIEF ARCHITECT
ROBERT
WILTSE

1095 FLORIDA AVENUE
SUITE L, LA 70458
OFFICE: 985-649-5932
FAX: 985-641-5950

WEBSITE:
WWW.DAMMONENGINEERING.COM
EMAIL:
DAMMONENG@DELTAOUTH.NET

ARCHITECTURE
ENGINEERING
STUDIES
PLANNING
INVESTIGATION
EXPERT WITNESS

NEW
LIVING
FACILITY

STARC WEST
VIOLA ST
MANDEVILLE, LA

EXTERIOR
ELEVATIONS

REV:
SCALE: AS NOTED
JOB#: 2081
DATE: 7-21-10
SHEET

A-4

OF