

EXTERIOR WALLS

GA FILE NO. WP 8004

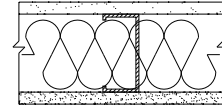
PROPRIETARY†

1 HOUR
FIRE

GYPSUM WALLBOARD, STEEL STUDS, MINERAL FIBER INSULATION, FIBER-CEMENT BOARD

EXTERIOR SIDE: One layer 7/16" proprietary fiber-cement board applied parallel to 3 5/8" steel studs 16" o.c. with 1" No.8-18 x 0.323" head diameter ribbed bugle head screws 6" o.c. 3 1/2" mineral fiber insulation batts or blankets, 3.0 pcf, in stud space.

INTERIOR SIDE: One layer 5/8" proprietary type X gypsum wallboard applied parallel to studs with 1" Type S drywall screws 8" o.c. at edges and 12" o.c. at intermediate framing. **(NLB)**



PROPRIETARY GYPSUM BOARD

CertainTeed Gypsum, Inc.

5/8" ProRoC™ Type X Gypsum Panels

Thickness: 4 3/4"
Limiting Height: Refer to manufacturer
Approx. Weight: 7.5 psf
Fire Test: OPL 11710-92783, 2-13-92

†Contact the manufacturer for more detailed information on proprietary products.