

**DAMMON**  
ENGINEERING, INC.

CHIEF ENGINEER  
EMMETT  
DAMMON, P.E.  
CHIEF ARCHITECT  
ROBERT  
WILTSE

554 OLD SPANISH TRAIL  
SUITE L, LA, 70456  
OFFICE: 985-649-5632  
FAX: 985-641-5950

WEBSITE:  
WWW.DAMMONENGINEERING.COM  
EMAIL:  
DAMMONENG@BELL.SOUTH.NET

ARCHITECTURE  
ENGINEERING  
STUDIES  
PLANNING  
INVESTIGATION  
EXPERT WITNESS

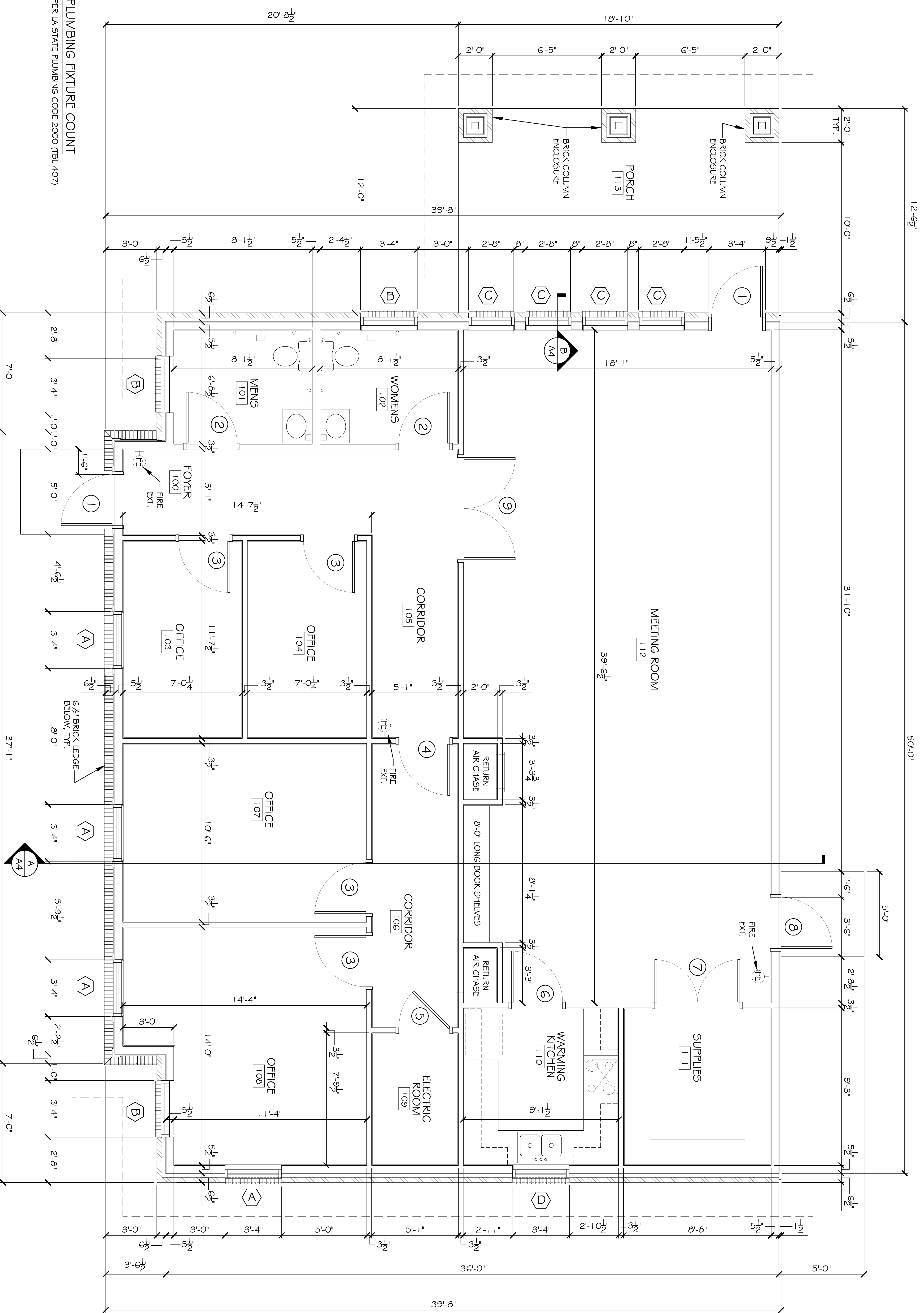
PAUL REES  
OFFICE BUILDING  
2271 8TH. ST.  
MANDEVILLE, LA  
70471

FLOOR  
PLAN

REV:	
SCALE:	AS NOTED
JOB#:	2104
DATE:	05-20-11
SHEET	10

A-1

OF 20



PLUMBING FIXTURE COUNT  
PER LA STATE PLUMBING CODE 2000 (TBL 407)

FLOOR PLAN  
SCALE: 3/8" = 1'

