

DAMMON
ENGINEERING, INC.

CHIEF ENGINEER
EMMETT
DAMMON, P.E.

CHIEF ARCHITECT
ROBERT
WILTSE

554 OLD SPANISH TRAIL
SUITE, LA, 70456
OFFICE: 985-649-5632
FAX: 985-641-5950

WEBSITE:
WWW.DAMMONENGINEERING.COM
EMAIL:
DAMMONENG@BELL.SOUTH.NET

ARCHITECTURE
ENGINEERING
STUDIES
PLANNING
INVESTIGATION
EXPERT WITNESS

PAUL REES
OFFICE BUILDING
2271 8TH. ST.
MANDEVILLE, LA
70471

REFLECTED
CEILING PLAN

REV:

SCALE: AS NOTED

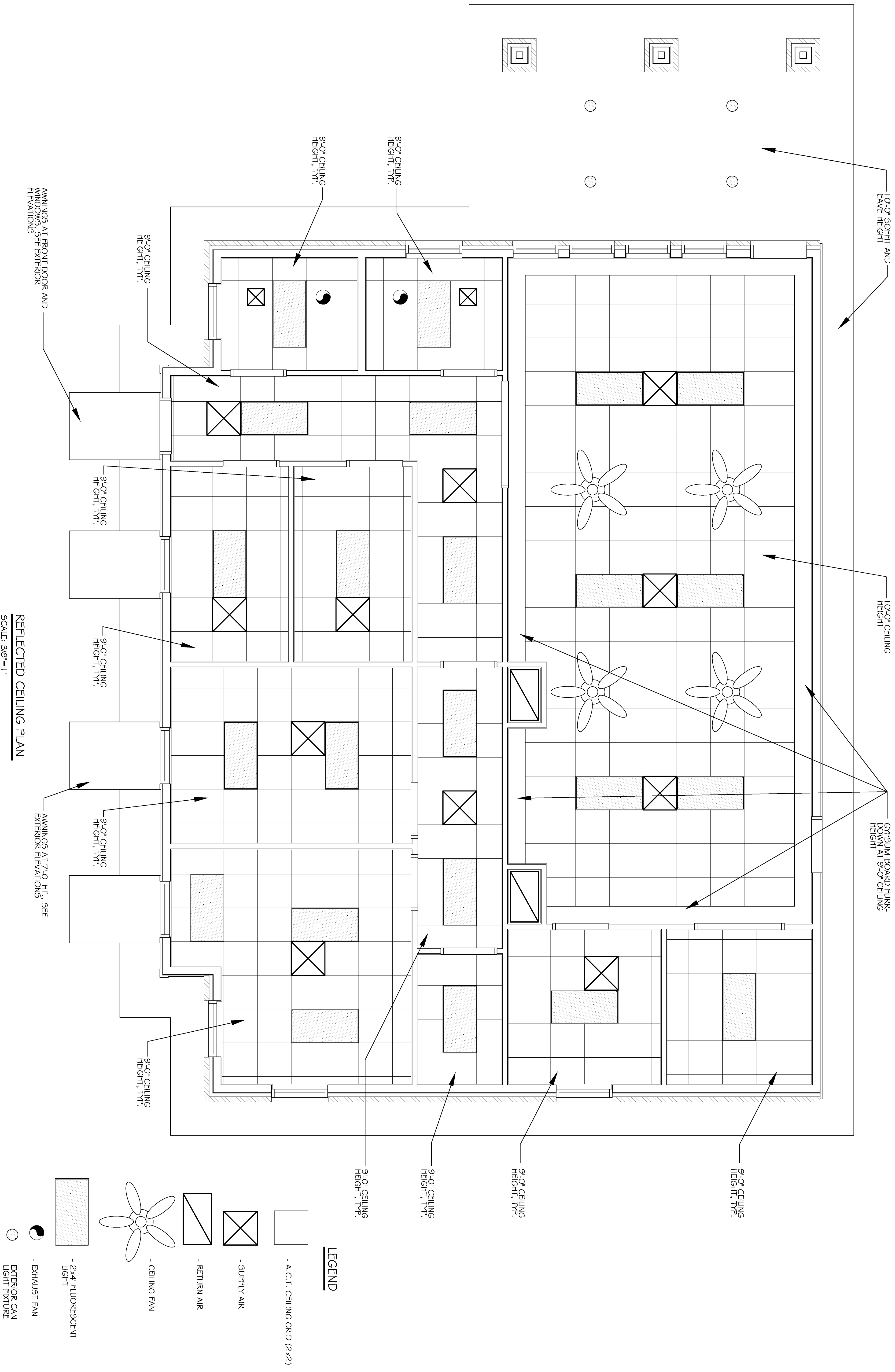
JOB#: 2104

DATE: 05-20-11

SHEET 14

A-5

OF 20



REFLECTED CEILING PLAN
SCALE: 3/8"=1'

