

**DAMMON**  
ENGINEERING, INC.

CHIEF ENGINEER  
EMMETT  
DAMMON, P.E.

CHIEF ARCHITECT  
ROBERT  
WILTSE

554 OLD SPANISH TRAIL  
SLIDELL, LA. 70458  
OFFICE: 985-649-5832  
FAX: 985-641-5950

WEBSITE:  
WWW.DAMMONENGINEERING.COM

EMAIL:  
DAMMONENG@BELLSOUTH.NET

ARCHITECTURE  
ENGINEERING  
STUDIES  
PLANNING  
INVESTIGATION  
EXPERT WITNESS

PAUL REES  
OFFICE BUILDING  
2271 8TH. ST.  
MANDEVILLE, LA  
70471

SITE  
PLAN

REV:

SCALE: AS NOTED

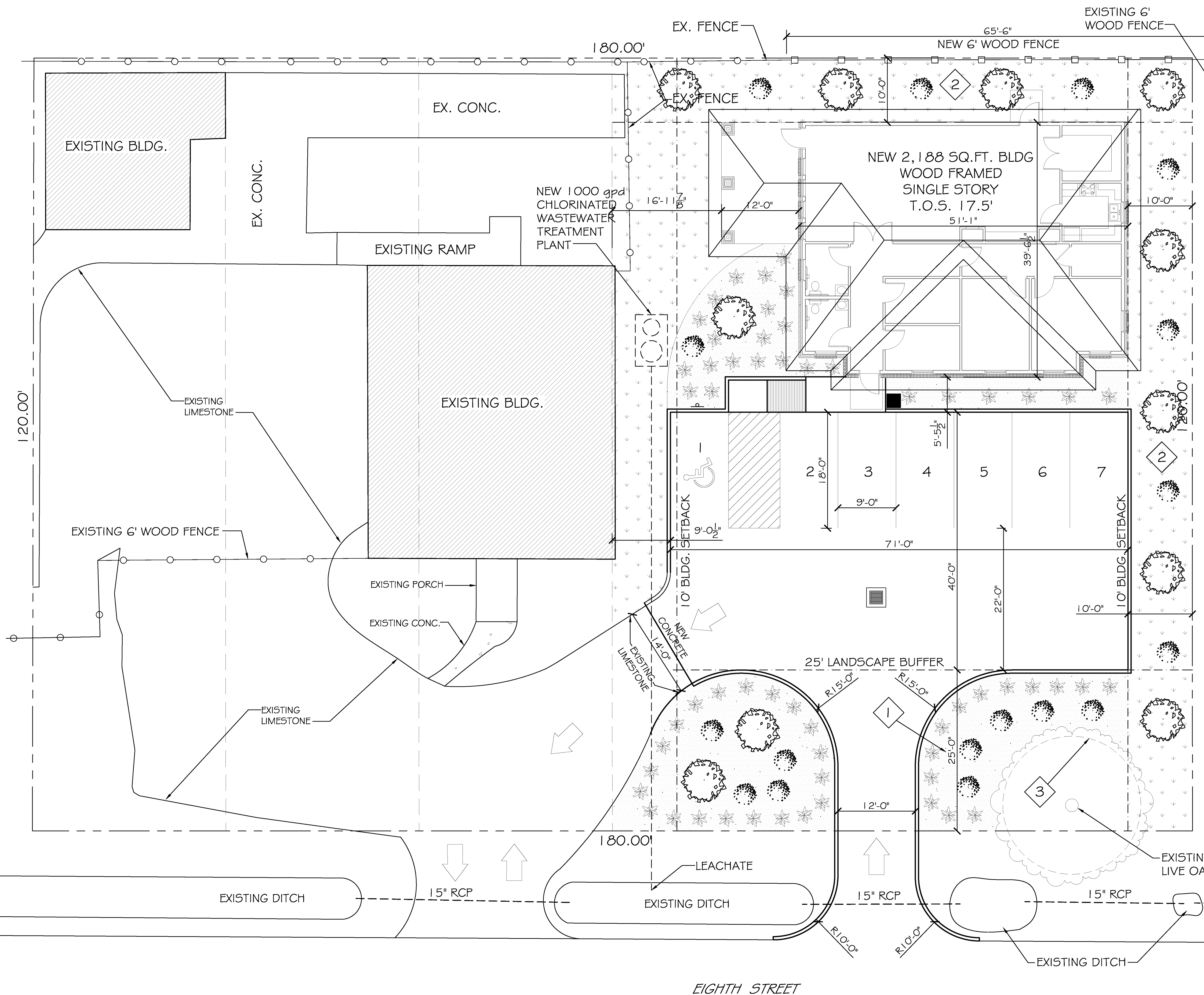
JOB#: 2104

DATE: 05-20-11

SHEET 3

C-2

OF 20



**LANDSCAPE NOTES:**

- BUFFER ZONE:** 1 CLASS A FOR EACH 25' = 90/25' = 3.6 CLASS A TREES  
1 CLASS B FOR EACH 10' = 90/10' = 9 CLASS B TREES  
PROVIDE A MINIMUM SIX (6) FOOT HIGH VISUAL SCREEN PLANTINGS SHALL BE OF A FORM, SIZE, AND TYPE WHICH WILL PROVIDE A SEVENTY (70%) PERCENT OR MORE OPAQUE SCREEN WITHIN NO LONGER THAN TWELVE (12) MONTHS OF THE DATE PLANTED. PLANTINGS SHALL BE A MINIMUM OF FOUR (4) FEET IN HEIGHT FROM THE GROUND IMMEDIATELY AFTER PLANTING.
- "GREENBELT" AREA:** 1 CLASS A AND 1 CLASS B FOR EACH 25 LINEAR FEET = 185/25' = 7.4 CLASS A AND B TREES
- VEGETATION PROTECTION ZONE:** PROTECT EXISTING LIVE OAK TO REMAIN. A BARRIER SHALL BE ERRECTED AND MAINTAINED AROUND THIS AREA AT ALL TIMES DURING CONSTRUCTION. NO SOIL DEPOSITS, CONSTRUCTION MATERIALS, EQUIPMENT, OR OTHER MATERIALS SHALL BE TEMPORARILY OR PERMANENTLY STORED IN LOCATIONS WITHIN OR IMMEDIATELY ADJACENT TO THE VEGETATION PROTECTION ZONE WHICH WOULD CAUSE SUFFOCATION OF ROOT SYSTEMS OF TREES REQUIRED OR PROPOSED TO BE PRESERVED. NO PAVING WITH CONCRETE, ASPHALT, OR OTHER IMPERVIOUS MATERIAL SHALL BE ALLOWED WITHIN THE VEGETATION PROTECTION ZONE. NO STRUCTURE SHALL BE PLACED OR CONSTRUCTED AT ANY TIME WITHIN THE VEGETATION PROTECTION ZONE.

**PARKING REQUIREMENTS-**

OFFICE / PROFESSIONAL USE  
1 SPACE PER EACH 350 S. F. OF GROSS FLOOR AREA EXCLUDING STORAGE AREAS WHICH SHALL NOT EXCEED 15% OF THE GROSS SQUARE FOOTAGE.

PARKING SPACES REQUIRED = 2188 (.85) / 350 = 5.3 (OR 6) SPACES  
PARKING SPACES PROVIDED = 7 (INCLUDING 1 HANDICAP PARKING SPACE)

**SITE LEGEND**

- PROPERTY LINE
- UTILITY / EASEMENT LINE
- TRIANGULAR SITE LINE
- BUILDING SETBACK MIN.
- LANDSCAPING/BUFFER ZONE LIMITS
- OPAQUE BUFFER FENCE
- ♿ HANDICAP PARKING
- HANDICAP PARKING SIGN
- TRASH RECEPTACLE

**LANDSCAPE LEGEND**

- CLASS A TREE:**  
ANY SELF-SUPPORTING WOODY PLANT OF A SPECIES WHICH NORMALLY GROWS TO AN OVERALL HEIGHT OF APPROXIMATELY FIFTY (50) FEET, USUALLY WITH ONE MAIN STEM OR TRUNK ALTHOUGH SOME SPECIES MAY HAVE MULTIPLE TRUNKS, AND WITH MANY BRANCHES. A LIST OF SPECIES CONSIDERED TO BE CLASS A TREES MAY BE OBTAINED IN THE OFFICE OF THE DEPARTMENT OF PLANNING AND DEVELOPMENT.
- CLASS B TREE:**  
ANY SELF-SUPPORTING WOODY PLANT OF A SPECIES WHICH NORMALLY GROWS TO AN OVERALL HEIGHT OF APPROXIMATELY TWENTY-FIVE (25) FEET, WITH ONE OR MORE MAIN STEM(S) OR TRUNK(S) AND MANY BRANCHES. A LIST OF SPECIES CONSIDERED TO BE CLASS B TREES MAY BE OBTAINED IN THE OFFICE OF THE DEPARTMENT OF PLANNING AND DEVELOPMENT.
- GRASS SOD
- ASIAN JASMINE GROUNDCOVER
- INDIAN HAWTHORNE

SITE PLAN  
SCALE: 1/8" = 1'-0"

