

DAMMON
ENGINEERING, INC.

CHIEF ENGINEER
EANNETT
DAMMON, P.E.
CHIEF ARCHITECT
ROBERT
WILTSE

554 OLD SPANISH TRAIL
SLIDELL, LA, 70458
OFFICE: 985-649-5632
FAX: 985-641-5950

WEBSITE:
WWW.DAMMONENGINEERING.COM
EMAIL:
DAMMONEN@BLSOUTH.NET

ARCHITECTURE
ENGINEERING
STUDIES
PLANNING
INVESTIGATION
EXPERT WITNESSES

PAUL REES
OFFICE BUILDING
2271 8TH. ST.
MANDEVILLE, LA
70471

LIGHTING
PLAN

REV:

SCALE: AS NOTED

JOB#: 2104

DATE: 05-20-11

SHEET 19

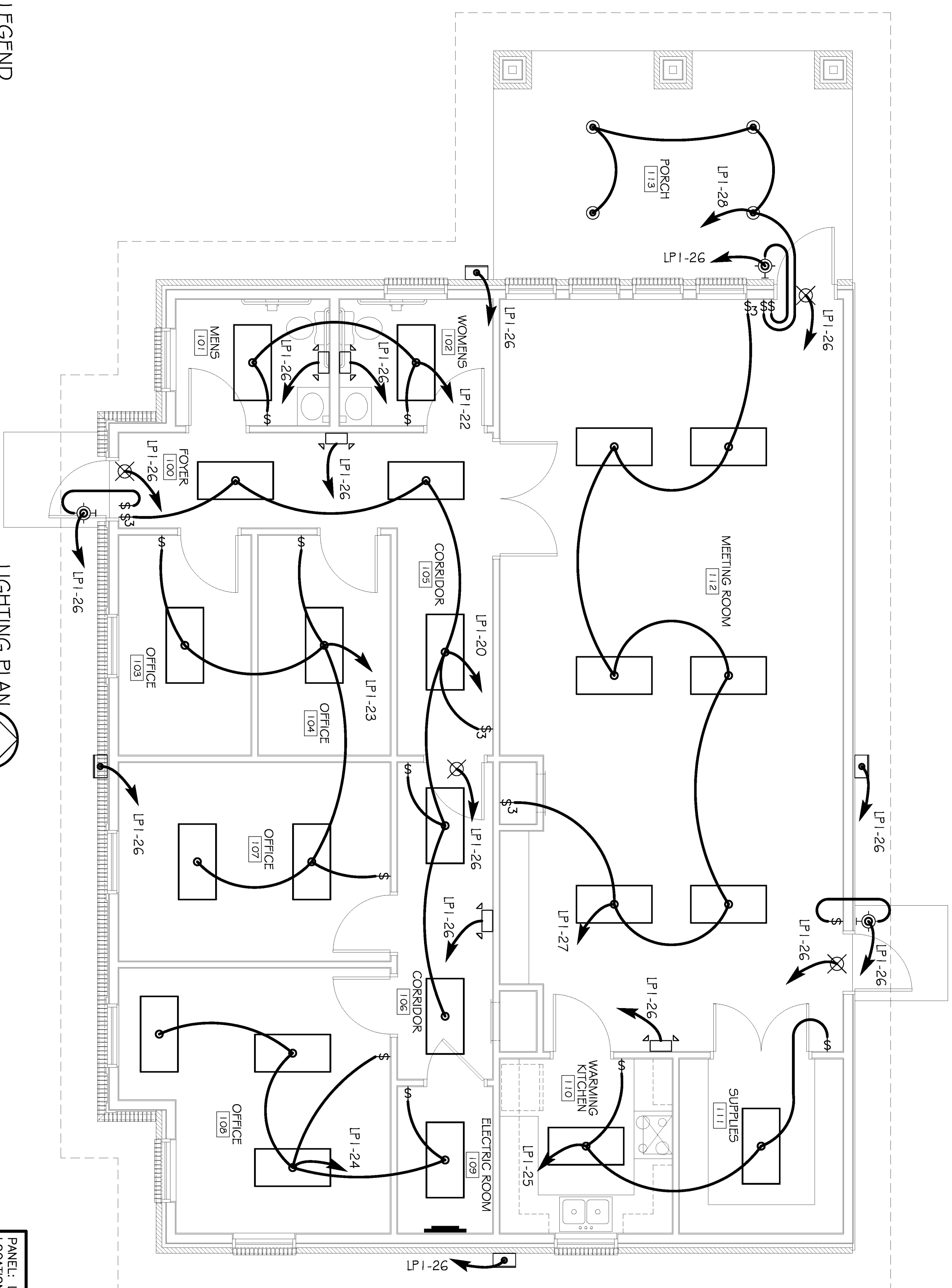
E-2

OF 20

CLECO Power LLC - Electrical Load Summary

Project Name: Paul Rees Office Building
Project Address: 2275 8th. Street
City / Town: Mandeville, Louisiana
Intended Use: Office Building
Requested Service: 240 Volts
Service Entrance Size: 200 Amps
HVAC Tonnage: 7.00 Tons
Largest Motor: N/A HP (Note: Motors above 20 hp may require reduced voltage starting and are never recommended for use with 120/240V, 3 ϕ , 4W services.)
Total Building Square Footage: 2,188 Square Feet
Individual Unit Square Footage: N/A Square Feet (Multiple Occupancy)
Individual Unit Designation: N/A (Multiple Occupancy)

LOAD SOURCE	1 ϕ - kVA	3 ϕ - kVA	or	1 ϕ - kW	3 ϕ - kW
Building Lighting	2266	-	or	-	-
Electric Water Heating	7200	-	or	-	-
Heat Pumps	-	-	or	-	-
Supplemental Heat System	-	-	or	-	-
Air Conditioning Condensing Units	14400	-	or	-	-
Electrical Heating (Primary) - AHUs	21600	-	or	-	-
Cooking	-	-	or	-	-
Refrigeration	160	-	or	-	-
Receptacles (Standard)	7040	-	or	-	-
Receptacles (Computer)	-	-	or	-	-
Total Motors (Exclude HVAC)	-	-	or	-	-
Exterior Lighting	810	-	or	-	-
Miscellaneous - Ceiling Fans	640	-	or	-	-
Other (Specify)	-	-	or	-	-



LEGEND

- - 2x4' FLUORESCENT LIGHT (3 BULBS @ 32 w EA. = 96 w PER LIGHT)
- ⊗ - EXIT LIGHT w/90 MIN. BATTERY BACK-UP (92 w EA.)
- ⊕ - EMERGENCY LIGHT w/ 90 MIN. BATTERY BACK-UP (10.82 w EA.)
- ⊙ - WALL MOUNTED EXTERIOR LIGHT FIXTURE (50 w EA.) WITH PHOTO-CELL
- ⊙ - WALL MOUNTED EXTERIOR WALL PACK FLOOD LIGHT (75 w EA.) WITH PHOTO-CELL
- ⊙ - CAN LIGHT WITH TRIM (90W)
- ⊙ - SWITCH
- ⊙ - 3 WAY SWITCH
- ⊙ - POWER PANEL

LIGHTING PLAN
SCALE: 1/4" = 1'

CCT. THIN WIRE SIZE	LOAD DESCRIPTION	BREAKER AMP	POLE	LOAD (VA)	BREAKER AMP	POLE	LOAD (VA)	LOAD DESCRIPTION	THIN WIRE SIZE	CCT. SIZE	
1	AHU #1	45	2	5400	30	2	3600	A/C COMPRESSOR #1	#8	2	
3	AHU #1	45	2	5400	30	2	3600	A/C COMPRESSOR #1	#8	4	
5	AHU #2	45	2	5400	30	2	3600	A/C COMPRESSOR #2	#8	6	
7	WATER HEATER 20 GALLON	30	2	3600	30	2	3600	Foyer 100 RECEPTACLE, RESTROOMS 101, 102, 103 OFFICE 104, & CORRIDOR 105 RECEPTACLES	#12	10	
9	CORRIDOR 106, OFFICE 107, EXTERIOR GFI, & HVAC DECK RECEPTACLES	20	1	1120	1280	1	20	OFFICE 108, ELECTRIC ROOM 109, AND RESTROOMS 101 & 102 LIGHTS	#12	12	
11	WARNING KITCHEN 110 REFRIGERATOR	20	1	160	800	1	20	WARMING KITCHEN 110 RECEPTACLES	#12	14	
13	MEETING ROOM 112 RECEPTACLES	20	1	800	640	1	20	MEETING ROOM 112 CEILING FANS	#12	16	
15	MEETING ROOM 112 AND EXTERIOR GFI	20	1	1120	480	1	20	FOYER 100, CORRIDOR 105, AND CORRIDOR 106 LIGHTS	#12	18	
17	OFFICES 103, 104, & 107 LIGHTS	20	1	384	192	1	20	RESTROOMS 101 & 102 LIGHTS	#12	20	
19	WARMING KITCHEN 110 AND SUPPLIES 111 LIGHTS	20	1	192	508	1	20	EXIT, EMERGENCY, EXTERIOR WALL-MTD., & EXTERIOR WALL PACK FLOOD LIGHTS	#12	22	
21	MEETING ROOM 112 LIGHTS	20	1	576	360	1	20	PORCH 113 CAN LIGHTS	#12	24	
23	SPARE	20	1	-	-	1	20	SPARE	#12	26	
25	SPARE	20	1	-	-	1	20	SPARE	#12	28	
27	SPARE	20	1	-	-	1	20	SPARE	#12	30	
29	SPARE	20	1	-	-	1	20	SPARE	#12	32	
31	SPARE	20	1	-	-	1	20	SPARE	#12	34	
33	SPARE	20	1	-	-	1	20	SPARE	#12	36	
35	SPARE	20	1	-	-	1	20	SPARE	#12	38	
37	SPARE	20	1	-	-	1	20	SPARE	#12	40	
39	SPARE	20	1	-	-	1	20	SPARE	#12	42	
41	SPARE	20	1	-	-	1	20	SPARE	#12	44	
				TOTAL CONNECTED LOAD (VA)=53,956					GROUND BUS (G)		
				A#=28,972					B#=28,984		

PANEL: LP-1
LOCATION: PAUL REES OFFICE BUILDING ELECTRICAL CLOSET
FEEDER SOURCE: CLECO
VOLTAGE: 120/240V, 200A 1 ϕ , 3W, MLO
SURFACE MOUNTED W/EQUIPMENT GND BAR