

DAMMON ENGINEERING, INC.

CHIEF ENGINEER
EMMETT DAMMON, P.E.

CHIEF ARCHITECT
ROBERT WILTSE

554 OLD SPANISH TRAIL
SLIDELL, LA. 70458
OFFICE: 985-649-5832
FAX: 985-641-5950

WEBSITE:
WWW.DAMMONENGINEERING.COM

EMAIL:
DAMMONENG@BELLSOUTH.NET

ARCHITECTURE
ENGINEERING
STUDIES
PLANNING
INVESTIGATION
EXPERT WITNESS

PAUL REES
OFFICE BUILDING
2275 8TH. ST.
MANDEVILLE, LA
70471

REFLECTED
CEILING PLAN

REV:

SCALE: AS NOTED

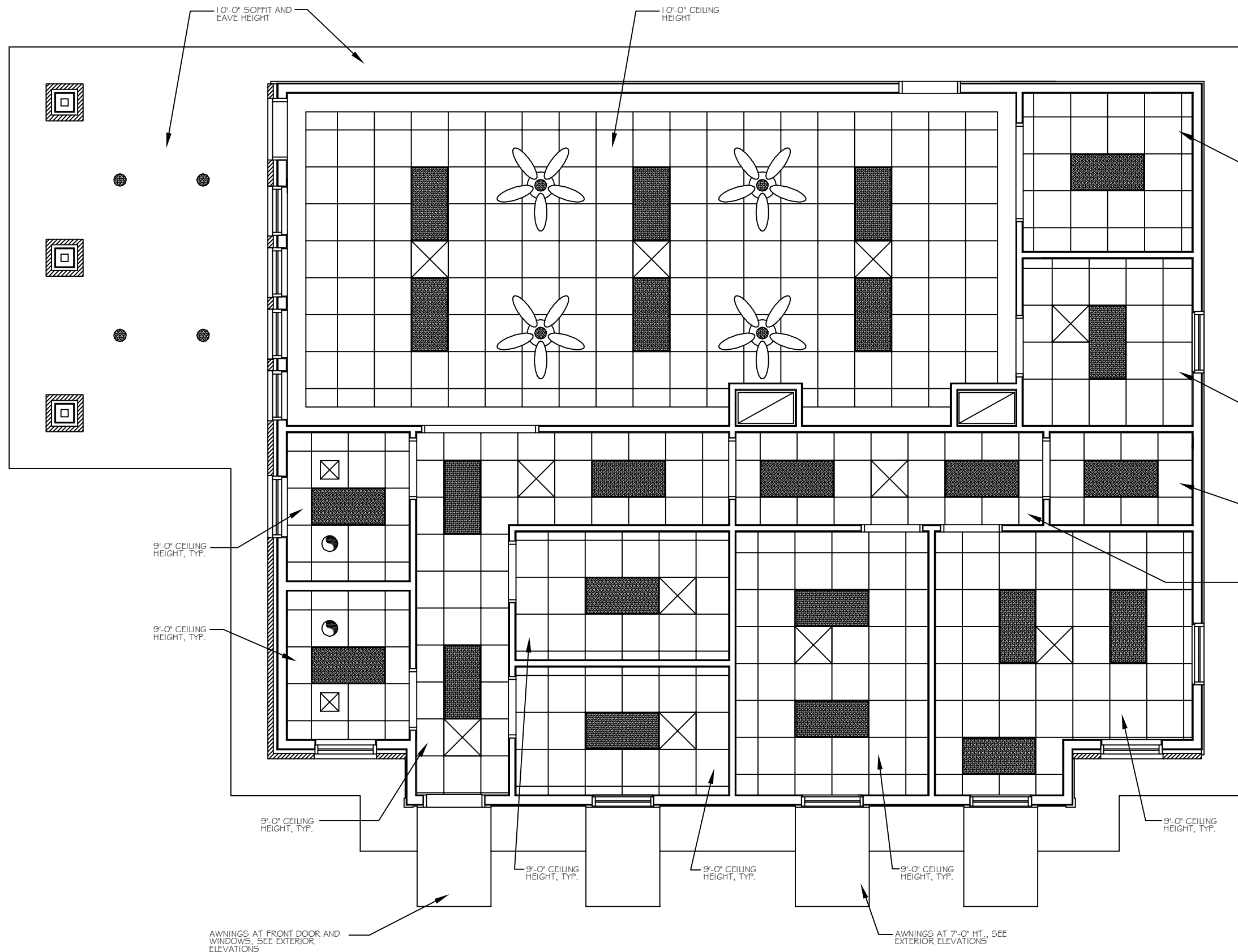
JOB#: 2104

DATE: 05-10-11


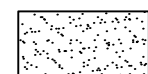
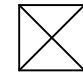
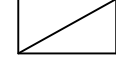



SHEET

A-5

OF



LEGEND

-  - A.C.T. CEILING GRID (2x2)
-  - GYPSUM BOARD CEILING
-  - SUPPLY AIR
-  - RETURN AIR
-  - 2x4 FLUORESCENT LIGHT
-  - EXHAUST FAN
-  - EXTERIOR CAN LIGHT FIXTURE

REFLECTED CEILING PLAN

SCALE: 3/8"=1'

PRELIMINARY (NOT FOR CONSTRUCTION)

This document was created with Win2PDF available at <http://www.win2pdf.com>.
The unregistered version of Win2PDF is for evaluation or non-commercial use only.
This page will not be added after purchasing Win2PDF.