

DAMMON
ENGINEERING, INC.

CHIEF ENGINEER
EMMETT
DAMMON, P.E.

CHIEF ARCHITECT
ROBERT
WILTSE

554 OLD SPANISH TRAIL
SLIDELL, LA. 70458
OFFICE: 985-649-5832
FAX: 985-641-5950

WEBSITE:
WWW.DAMMONENGINEERING.COM

EMAIL:
DAMMONENG@BELLSOUTH.NET

- ARCHITECTURE
- ENGINEERING
- STUDIES
- PLANNING
- INVESTIGATION
- EXPERT WITNESS

TIVOLI PLAZA
RENOVATION

1265 GAUSE
BOULEVARD
SLIDELL,
LOUISIANA
70458

EXTERIOR
ELEVATIONS

REV:

SCALE: AS NOTED

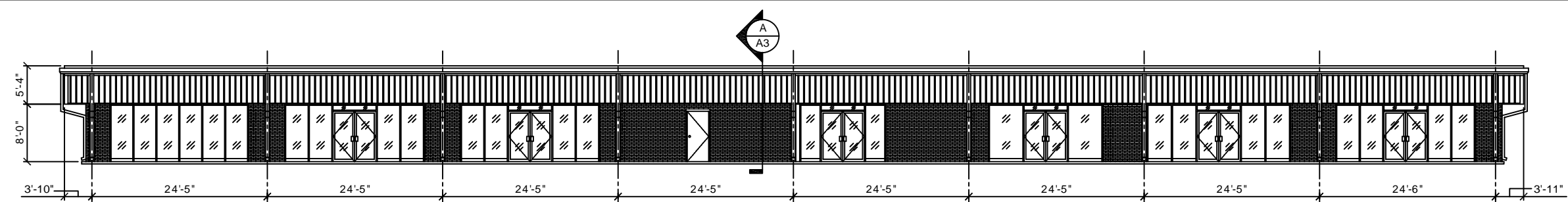
JOB#: 2117

DATE: 07-20-11

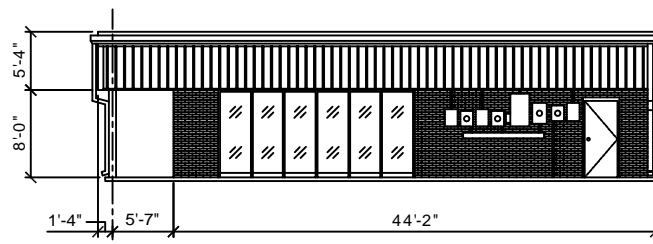
SHEET 5

A-2

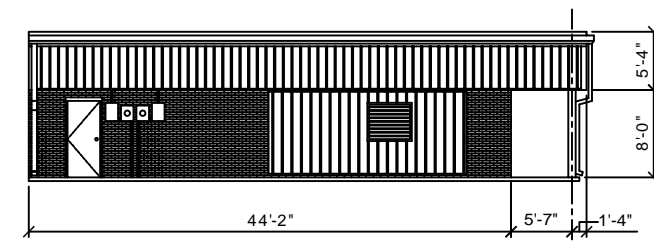
OF 7



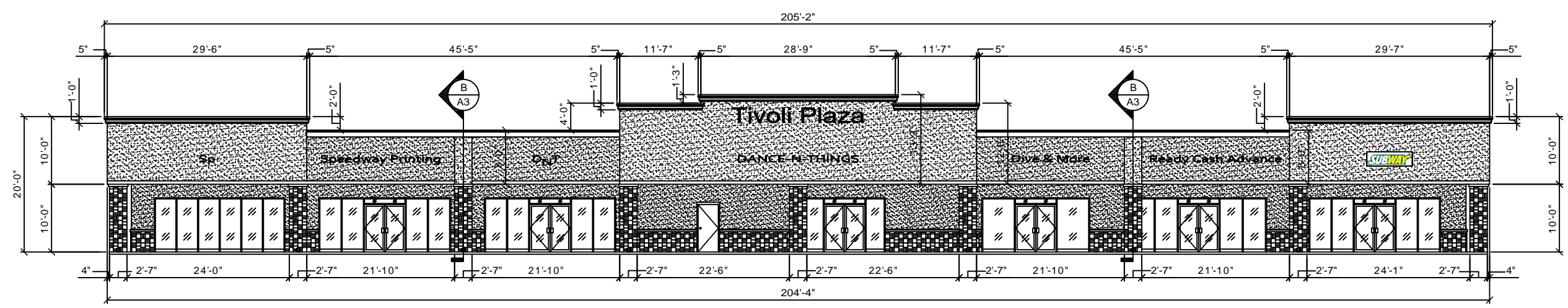
EXISTING EAST FRONT ELEVATION
SCALE: 1/8"=1'



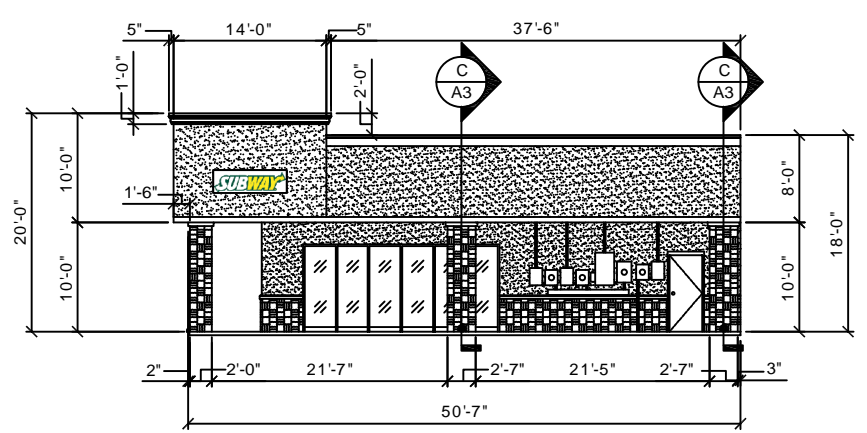
EXISTING NORTH SIDE ELEVATION
SCALE: 1/8"=1'



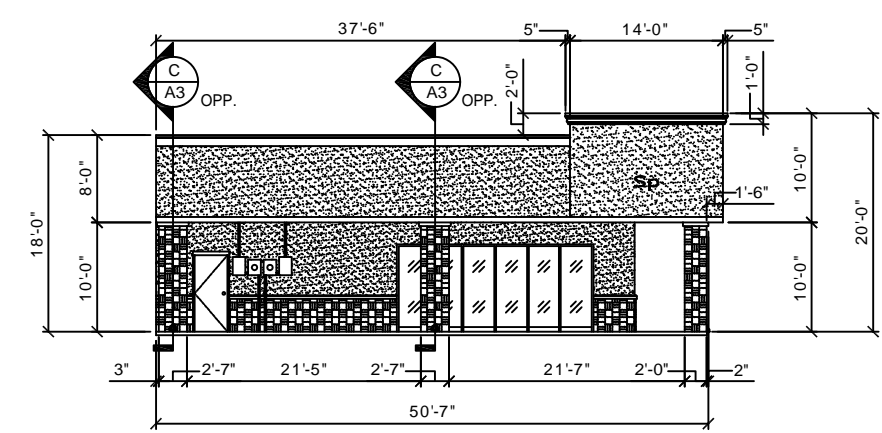
EXISTING SOUTH SIDE ELEVATION
SCALE: 1/8"=1'



NEW EAST FRONT ELEVATION
SCALE: 1/8"=1'



NEW NORTH SIDE ELEVATION
SCALE: 1/8"=1'



NEW SOUTH SIDE ELEVATION
SCALE: 1/8"=1'