

DAMMON
ENGINEERING, INC.

CHIEF ENGINEER
EMMETT
DAMMON, P.E.

CHIEF ARCHITECT
ROBERT
WILTSE

554 OLD SPANISH TRAIL
SLIDELL, LA. 70458
OFFICE: 985-649-5832
FAX: 985-641-5950

WEBSITE:
WWW.DAMMONENGINEERING.COM

EMAIL:
DAMMONENGIN@BELLSOUTH.NET

ARCHITECTURE
ENGINEERING
STUDIES
PLANNING
INVESTIGATION
EXPERT WITNESS

TIVOLI PLAZA
RENOVATION

1265 GAUSE
BOULEVARD
SLIDELL,
LOUISIANA
70458

NEW
PORCH
SOFFIT
SECTIONS

REV:

SCALE: AS NOTED

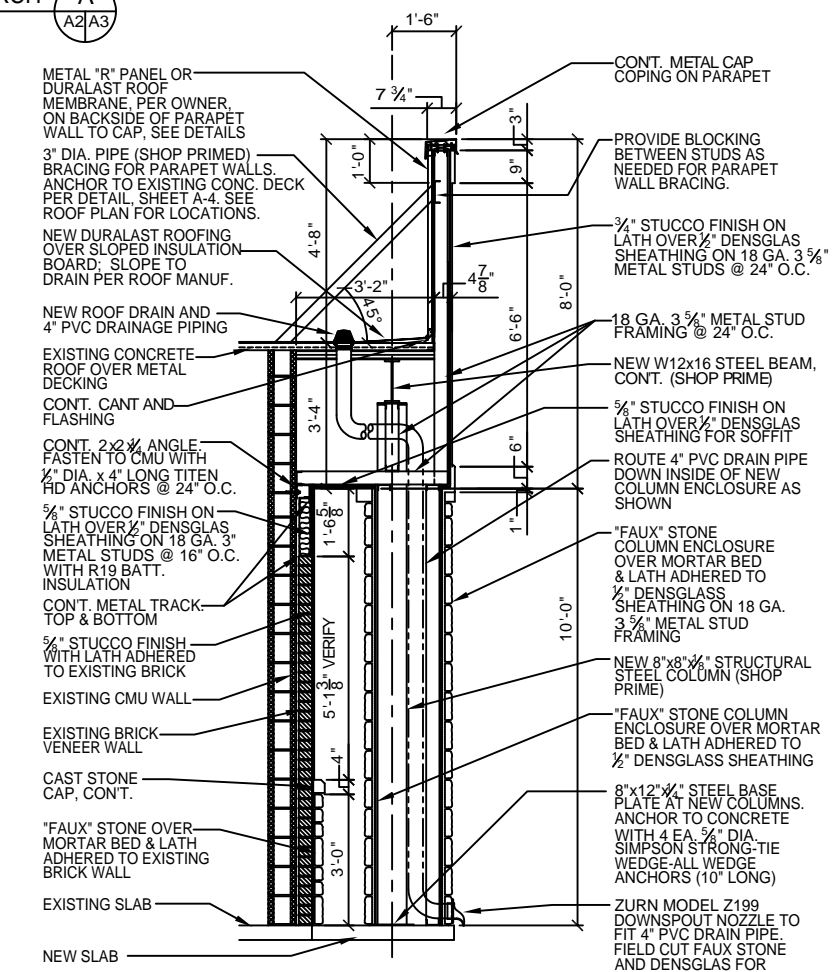
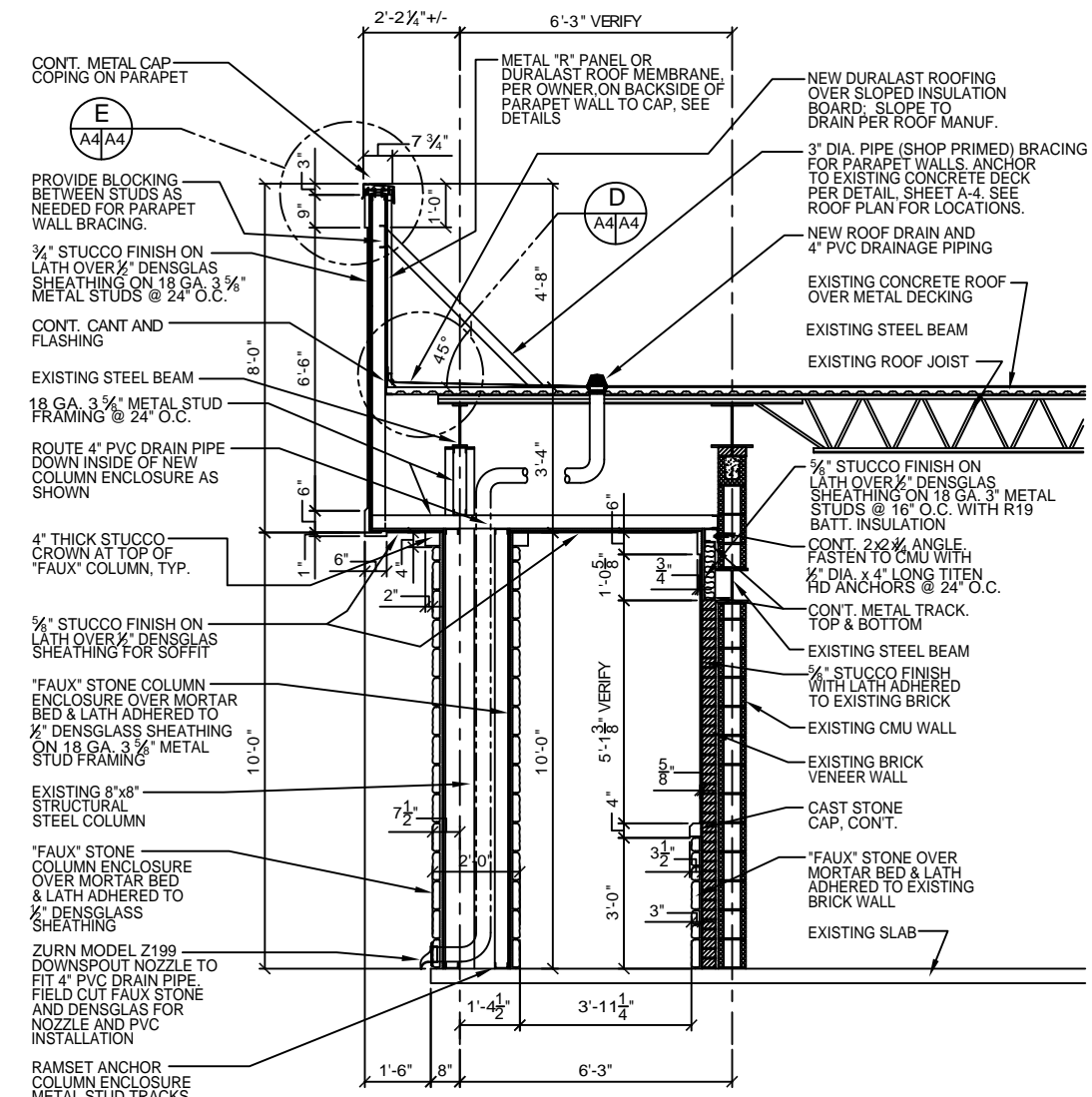
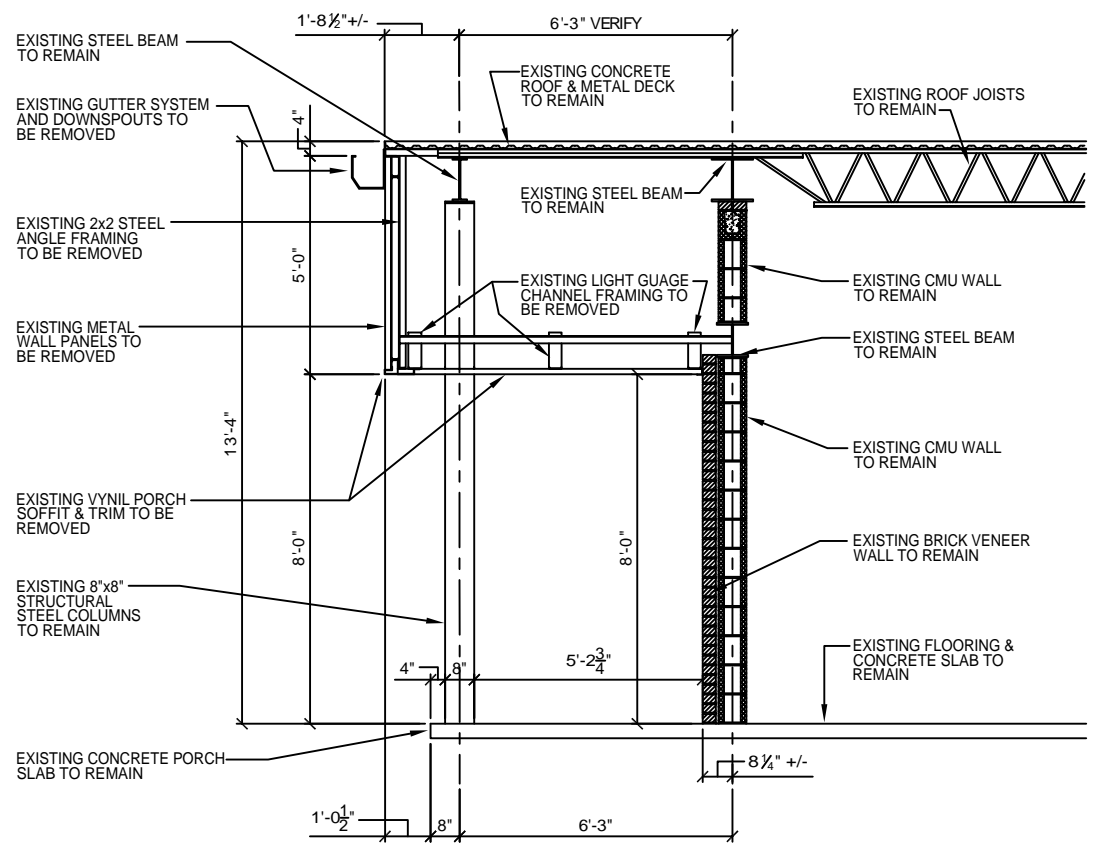
JOB#: 2117

DATE: 07-20-11

SHEET 6

A-3

OF 7



- EXTERIOR STUCCO SPECIFICATIONS:
1. COMPLY WITH ASTM C-841 AND C-482. PROVIDE 3/4" OR 5/8" (AS SHOWN ON SECTIONS) OVERALL THICKNESS ON SELF-FURRING DIAMOND MESH GALVANIZED METAL LATH, 3.4 LB. PER SQ. YARD, ON "TYVEK" STUCCO WRAP. ATTACH LATH AT "DIMPLES" ONLY, WITH NON-CORROSIVE SCREWS.
 2. METAL LATH AND ALL ACCESSORIES TO BE EQUAL TO "AMICO"; TO INCLUDE CORNER BEADS, CASING BEADS, BASE SCREDS, AND CONTROL JOINTS, ALL INSTALLED WITH NON-CORROSIVE SCREWS. ALL ACCESSORIES TO BE ZINC. ALL CORNERS TO BE MITERED.
 3. PORTLAND CEMENT STUCCO TO BE INSTALLED IN THREE COATS; SCRATCH, BROWN, AND FINISH. FINISH COAT TO BE TOTAL WALL SYNTHETIC.
 4. COMPLY WITH MFR. AND INDUSTRY RECOMMENDATIONS. INSTALL LATH IN ACCORDANCE WITH ASTM C-1063.
 5. SUBMIT DATA / CUT SHEETS FOR ALL ITEMS IF REQUIRED.