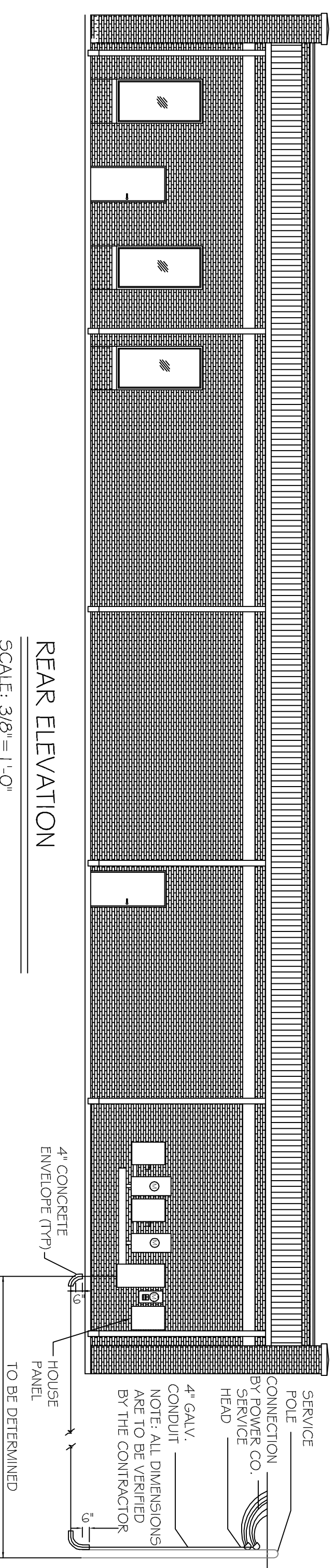


CRT. NO.	THREE PHASE SIZE	LOAD DESCRIPTION	BREAKER AMP	POLE	LOAD (VA)	48 BR. C. (VA)	POLE AMP	LOAD DESCRIPTION	THREE PHASE SIZE	CRT. NO.	
1	#12	HOUSE LIGHTING	20	1	800	200	1	20	#12	2	
3	#12	GFI OUTLET	20	1	800	160	1	20	GFI OUTLET	4	
5	#12	SPACE	20	1	-	-	1	20	SPACE	#12	
7	#12	SPACE	20	1	-	-	1	20	SPACE	#12	
9	-	SPACE	-	-	-	-	-	-	SPACE	10	
11	-	SPACE	-	-	-	-	-	-	SPACE	12	
13	-	SPACE	-	-	-	-	-	-	SPACE	14	
15	-	SPACE	-	-	-	-	-	-	SPACE	16	
17	-	SPACE	-	-	-	-	-	-	SPACE	18	
19	-	SPACE	-	-	-	-	-	-	SPACE	20	
21	-	SPACE	-	-	-	-	-	-	SPACE	22	
23	-	SPACE	-	-	-	-	-	-	SPACE	24	
TOTAL CONNECTED LOAD (VA)=67200					GROUND BUS (G)						
44=1000					BR=1000					GR=0	

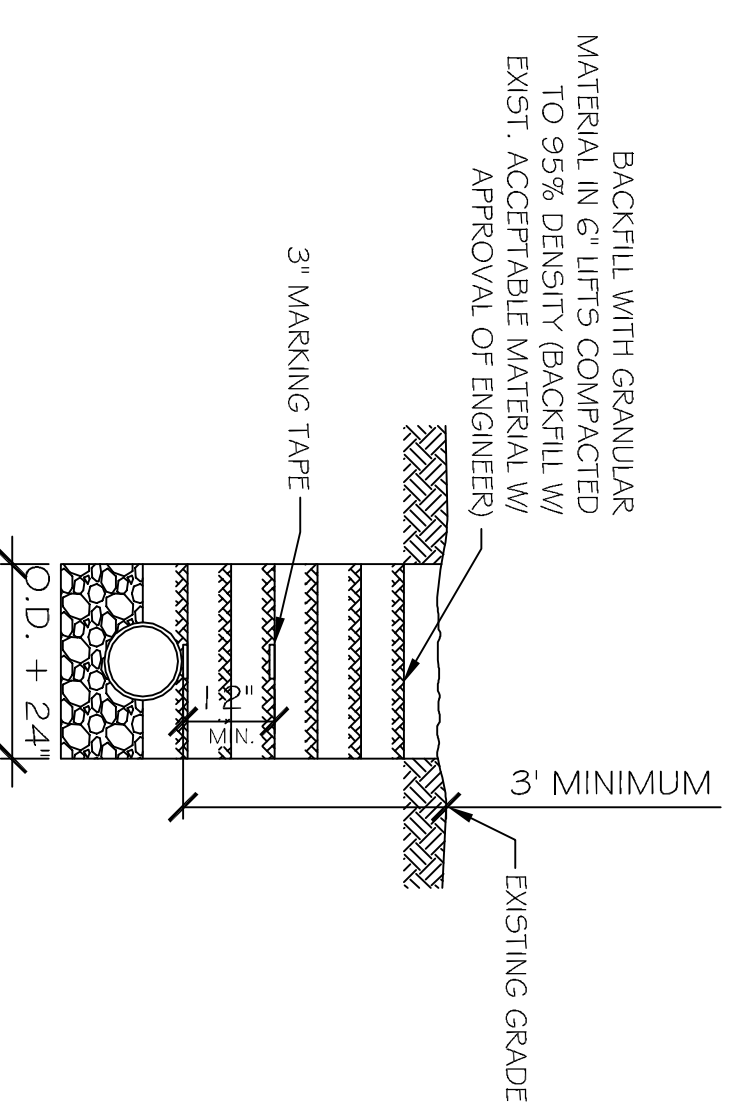
PANEL: HOUSE
LOCATION: REAR WALL
FEEDER SOURCE: CLECO

VOLTAGE: 208/120V, 125A, 3Ø, 4W, MLO
ENCLOSURE: SURFACE MOUNTED W/EQUIPMENT GND BAR
BOLT-ON BRK 22000 AIC



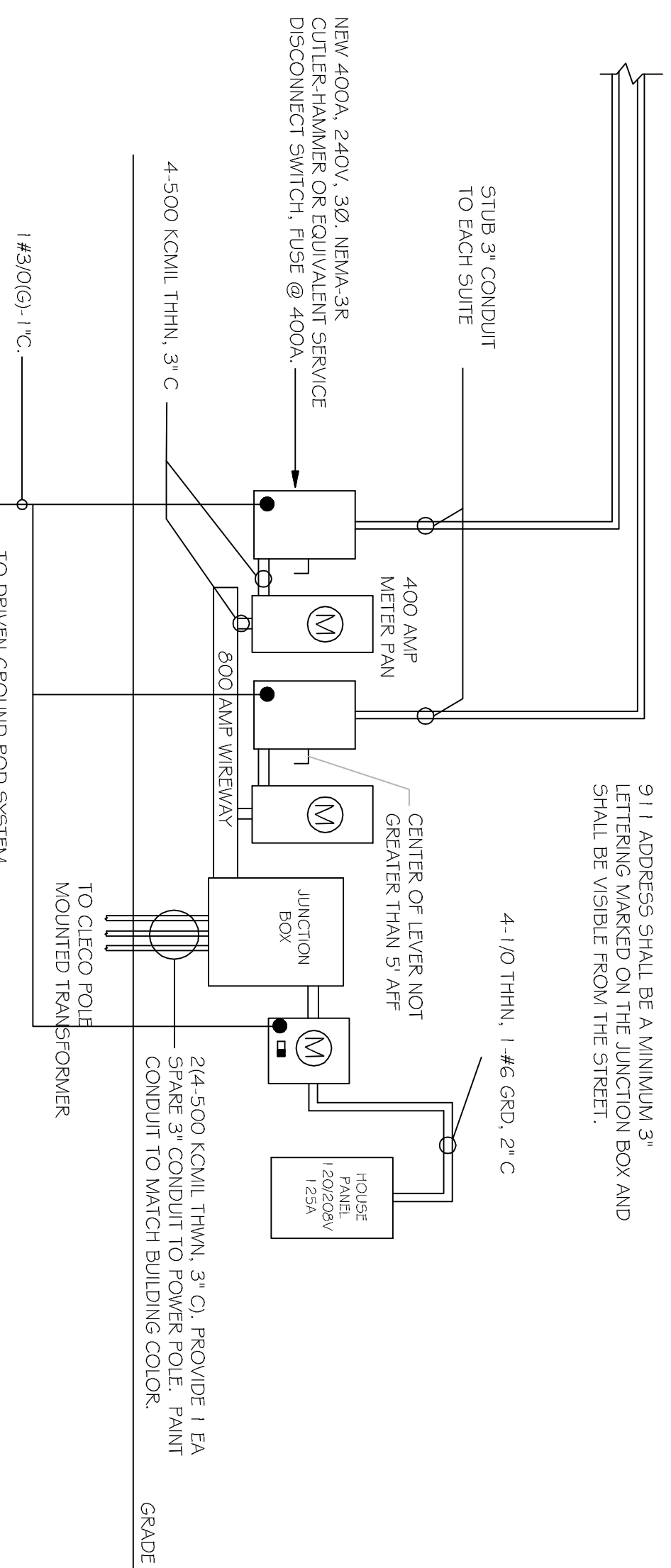
REAR ELEVATION
SCALE: 3/8" = 1'-0"

- UTILITY NOTES:
1. 50# 80 PVC CONDUIT WHERE PIPE IS EXPOSED ABOVE GRADE. TRANSITION TO SCH 40 PVC BELOW GRADE. ALL 90° ELBOWS TO BE LONG SWEEP TYPE.
 2. 120/208V 3Ø 800A SERVICE FROM UTIL. CO., FEEDER BY UTIL. CO TO FIRST JUNCTION BOX. FIELD LOCATE TRANSFORMER ON POLE AND COORDINATE WITH ELEC. COMPANY REGARDING NEW ELECTRICAL SERVICE CONNECTION.

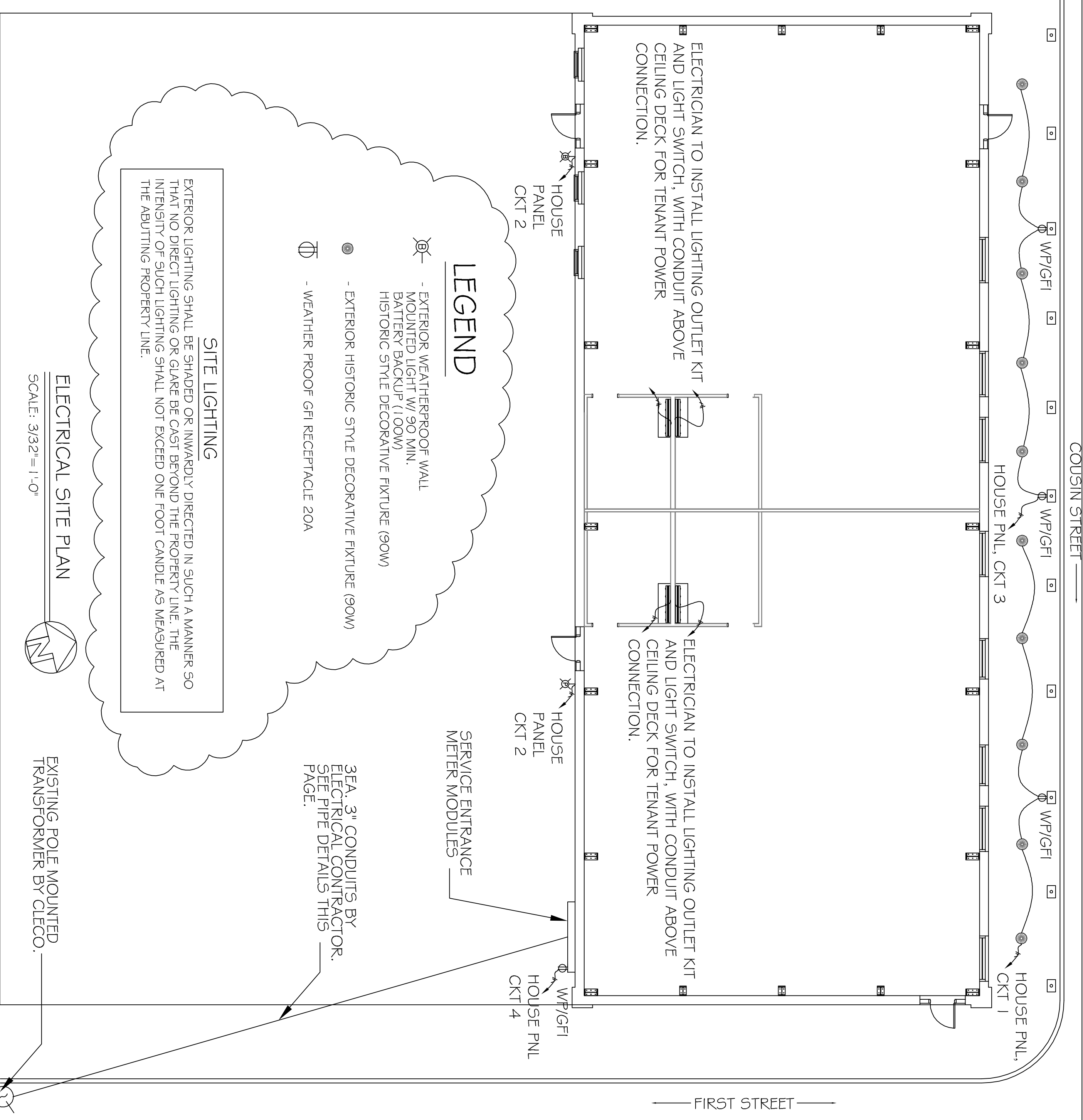


SUBSURFACE PIPE DETAIL
SCALE: N.T.S.

911 ADDRESS SHALL BE A MINIMUM 3' LETTERING MARKED ON THE JUNCTION BOX AND SHALL BE VISIBLE FROM THE STREET.



ELECTRICAL RISER DIAGRAM
SCALE: N.T.S.



ELECTRICAL NOTES

1. ALL WORK SHALL CONFORM TO THE LATEST EDITION OF THE NATIONAL ELECTRICAL CODE, THE GOVERNING ELECTRICAL CODE AND ALL OTHER INSPECTION DEPARTMENTS HAVING JURISDICTION. OBTAIN CERTIFICATES OR APPROVAL WHERE REQUIRED.
2. ALL MATERIALS FURNISHED SHALL BE NEW AND SHALL BE U.L. LISTED.
3. THE DRAWINGS INDICATE SIZE AND GENERAL LOCATION OF WORK. SCALE DIMENSIONS SHALL NOT BE USED. THE EXACT LOCATION AND LOCATION OF ALL LIGHTING FIXTURES, RECEPTACLES AND TELEPHONE OUTLETS, ETC., SHALL BE DETERMINED BY ACTUAL CONDITIONS IN THE FIELD.
4. PRIOR TO BIDDING, CONTRACTOR SHALL VISIT THE JOB SITE AND FAMILIARIZE THEMSELVES WITH THE EXISTING CONDITIONS.
5. ELECTRICAL CONTRACTOR SHALL COORDINATE HIS WORK WITH OTHER TRADES AND WITH OTHER CONTRACTORS WHOSE WORK MAY AFFECT THIS INSTALLATION.
6. ELECTRICAL CONTRACTOR SHALL COORDINATE INCOMING ELECTRICAL SERVICE WITH UTILITY COMPANY AND INCLUDE IN HIS BID ALL CHARGES AND FEES INCURRED IN MODIFICATIONS, WHERE MORE THAN ONE SWITCH OCCURS IN THE SAME LOCATION. THEY SHALL BE INSTALLED IN A GANG-TYPE BOX UNDER ONE COVER PLATE.
7. ELECTRICAL CONTRACTOR SHALL COORDINATE THE TELEPHONE INSTALLATION WITH THE TELEPHONE COMPANY AND THE GENERAL CONTRACTOR.
8. ELECTRICAL CONTRACTOR, BEFORE INSTALLING ANY OF THE WORK, SHALL SEE THAT IT DOES NOT INTERFERE WITH CLEARANCES REQUIRED FOR FINISHED COLUMNS, HUNG CEILINGS, PLASTER, PARTITIONS, WALLS, ETC., AS SHOWN IN THE ARCHITECTURAL DRAWINGS AND DETAILS. IF ANY WORK IS INSTALLED BY THE ARCHITECT, AS WELL AS TO PERMIT THE INSTALLATION OF THE ARCHITECTURAL WORK AS SHOWN ON THE PLANS AND DETAILS.
9. CONTRACTOR SHALL BE RESPONSIBLE FOR THE OPERATION OF THE ELECTRICAL SYSTEM IN THE BUILDING.
10. ALL TESTS SHALL BE MADE IN ACCORDANCE WITH THE LATEST STANDARD OF THE IEEE AND THE NATIONAL ELECTRICAL CODE.
11. MINIMUM CONDUCTOR SIZE SHALL BE #12, 600V INSULATION. MINIMUM SIZE CONDUIT SHALL BE 3/4" EXIT FOR INTERIOR USE, AND 3/4" RIGID ALUMINUM FOR EXTERIOR USE. USE TYPE MC CABLE COPPER, FOR LIGHTS, EXTERIOR SPACES AND COVERS. INTERIOR FITTINGS SHALL BE CAST WHERE EXPOSED ON WALLS. STAMPED BOXES MAY BE USED ABOVE CEILINGS IN AIR CONDITIONED SPACES, WHERE LAY IN FITURES ARE IN USE. USE 1/4" 2 ALLOWED FOR 6" WIDTH.
12. CONTRACTOR SHALL INSTALL WIRING AND OTHER CIRCUIT COMPONENTS TO MATCH EQUIPMENT ACTUALLY INSTALLED.
13. CONTRACTOR SHALL INSTALL WIRING AND OTHER CIRCUIT COMPONENTS TO MATCH EQUIPMENT ACTUALLY INSTALLED.
14. INSTALL GROUND FAULT RECEPTACLES AT RECEPTACLE LOCATIONS WITHIN 5' OF SINKS OR LAVATORIES, AND AT EXTERIOR LOCATIONS. EXTERIOR RECEPTACLES SHALL ALSO BE WATERPROOF.
15. BONDING AND GROUNDING SHALL BE IN ACCORDANCE WITH NFPA 70:230-63, NFPA 250-23, 250-71 & 250-72.
16. GROUND NEUTRAL IN ACCORDANCE WITH NFPA 70:250-23b.
17. FUSES SHALL BE ITT GLASS K5, 250 VOLT, 200,000 AMP INTERRUPTING CAP.
18. PROVIDE SERVICES OF A FIRE/SMOKE DETECTION AND ALARM COMPANY TO MEET REQUIREMENTS OF THE STATE FIRE MARSHAL.
19. EXTERIOR LIGHTING SHALL BE SHADED OR INWARDLY DIRECTED IN SUCH A MANNER SO THAT NO DIRECT LIGHTING OR GLARE IS CAST BEYOND THE PROPERTY LINE. THE INTENSITY OF SUCH LIGHTING SHALL NOT EXCEED ONE FOOT CANDLE AS MEASURED AT THE ADJUTING PROPERTY LINE.
20. ALL ELECTRICAL, MECHANICAL AND PLUMBING PENETRATING FIRE PARTITIONS SHALL BE FIRE CAULKED. PENETRATIONS THROUGH RATED CONSTRUCTION SHALL BE SEALED WITH A MATERIAL CAPABLE OF PREVENTING THE PASSAGE OF FLAMES AND HOT GASES WHEN TESTED IN ACCORDANCE WITH ASTM-E814.)

ELECTRICAL SITE PLAN
SCALE: 3/32" = 1'-0"

<p>REVISIONS</p> <table border="1"> <thead> <tr> <th>#</th> <th>DESCRIPTION</th> <th>DATE</th> </tr> </thead> <tbody> <tr> <td>1</td> <td>ADDED NOTE</td> <td>9-23-13</td> </tr> </tbody> </table>		#	DESCRIPTION	DATE	1	ADDED NOTE	9-23-13	<p>OLDE TOWN SLIDELL FIRE DAMAGE REHABILITATION 227 & 2565 COLEEN STREET SLIDELL, LA 70455</p>		<p>J:\DAMMON\Dammon Logo\Dammon Logo.jpg</p>	
#	DESCRIPTION	DATE									
1	ADDED NOTE	9-23-13									
JOB No:	2146	DATE:	07-26-2012	<p>The above drawings and specifications, designs and arrangements represented hereby, are and shall remain the property of Dammon Engineering, and no part thereof shall be copied, distributed, copied, or used in connection with any work or project other than the specific project for which the fee has been prepared and approved without written consent of Dammon Engineering. Visual contact with these drawings or specifications shall constitute conclusive evidence of acceptance of these restrictions.</p>							
DRAWN BY:	BSN	CHECKED BY:	BSN	<p>CHIEF ENGINEER: EMMETT DAMMON, P.E. CHIEF ARCHITECT: ROBERT WILTSE 554 OLD SPANISH TRAIL SLIDELL, LA 70458</p>							
<p>SHEET No: E-1</p>		<p>8 OF 9</p>		<p>dammonengineering.com dammon@dammoneng.com PHONE: 985-649-5832 FAX: 985-641-5950</p>							

ELECTRICAL PLAN