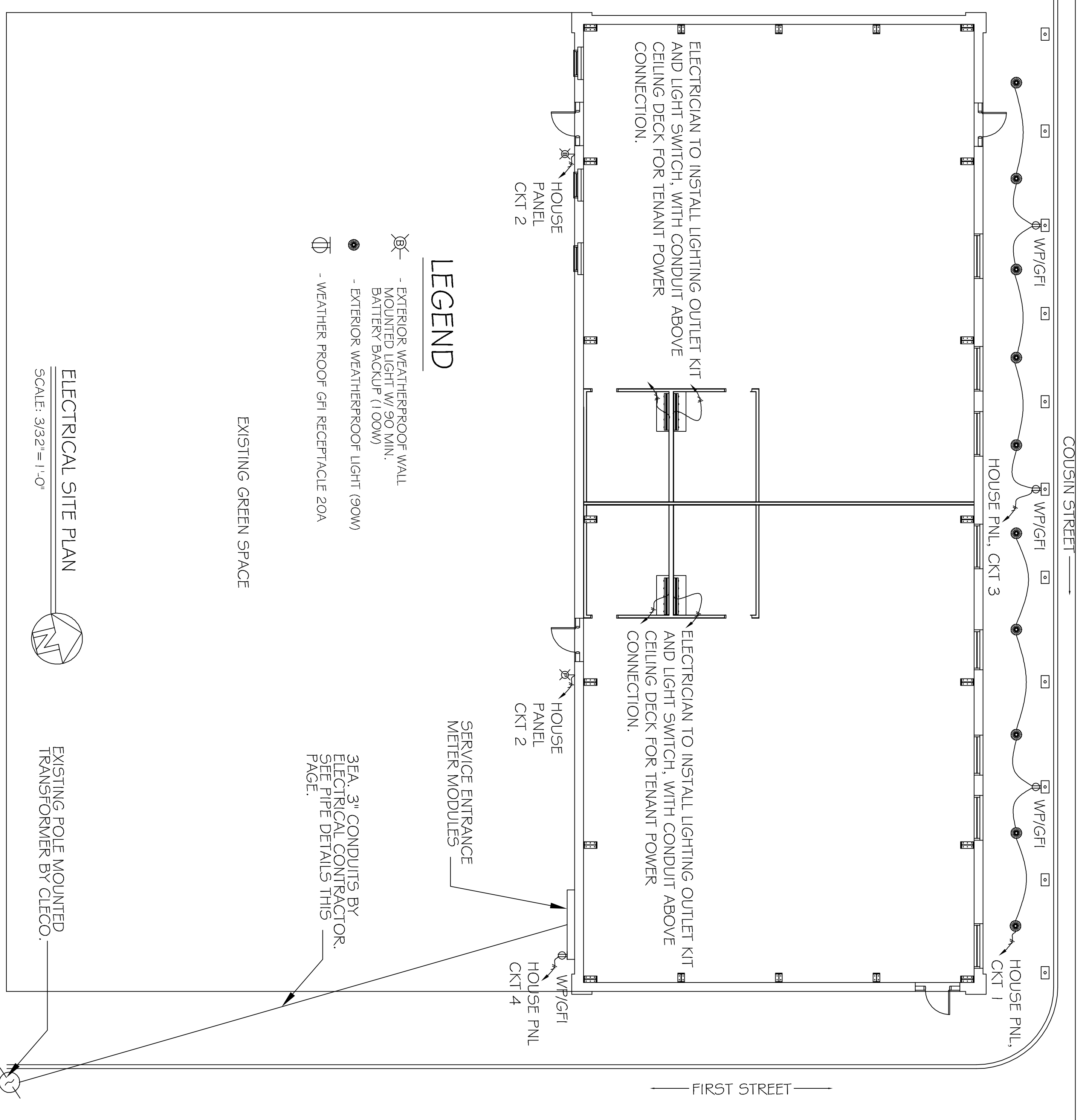
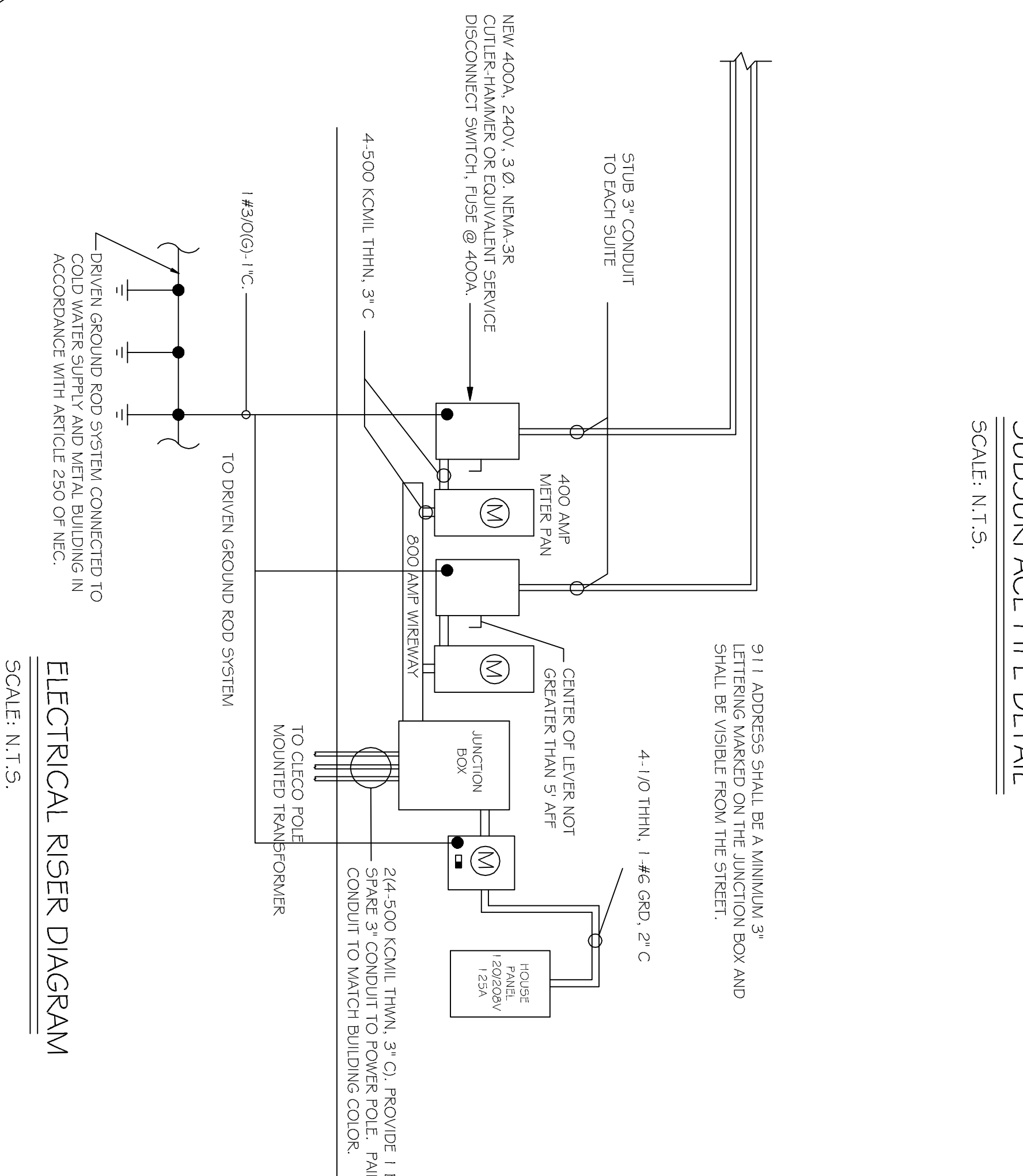
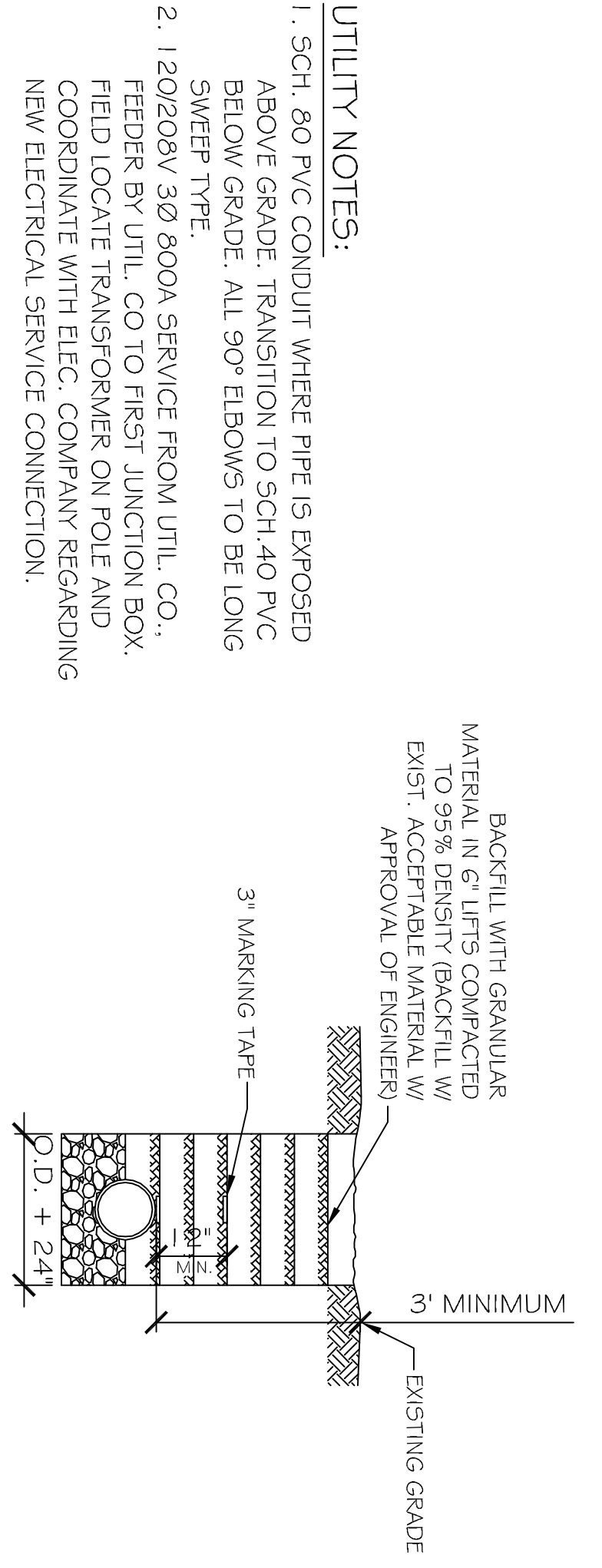
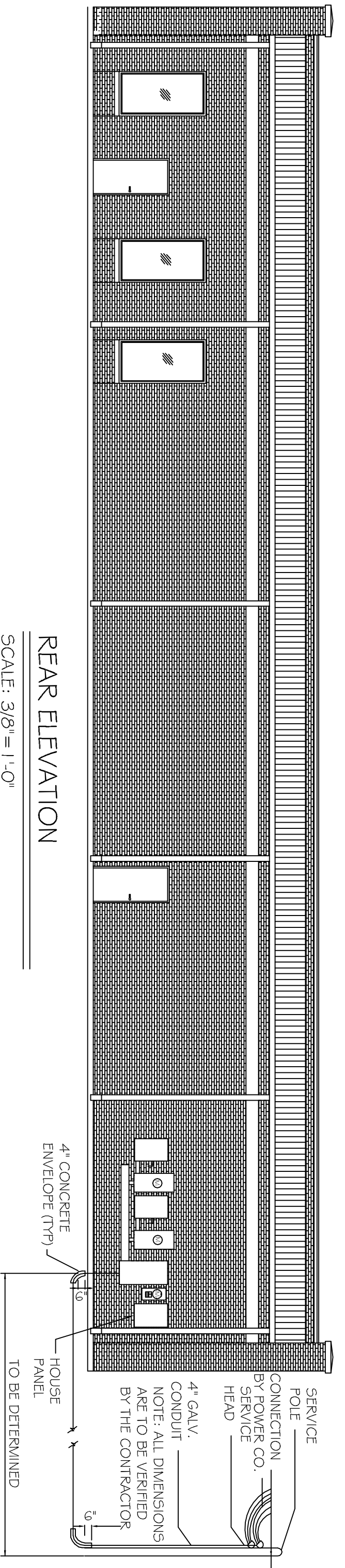


PANEL: HOUSE		VOLTAGE: 208/120V, 125A 3P, 4W MID									
LOCATION: REAR WALL		WINDING: 120V/240V W/ 450MM <sup>2</sup> SMD BAR									
FEDERATION: CLECO		BOLT-ON BRK: 22000 AC									
FEDERATION SOURCE: CLECO											
CT	THIN SIZE	LOAD DESCRIPTION	BREAKER	LOAD (VA)	4000	2000	LOAD (VA)	POLE AMP	LOAD DESCRIPTION	THIN SIZE	CT NO.
1	#12	HOUSE LIGHTING	20	1	800	200	1	20	HOUSE LIGHTING	#12	2
3	#12	GFI OUTLET	20	1	800	160	1	20	GFI OUTLET	#12	4
5	#12	SPACE	20	1	-	-	1	20	SPACE	#12	6
7	#12	SPACE	20	1	-	-	1	20	SPACE	#12	8
9	-	SPACE	-	-	-	-	-	-	SPACE	-	10
11	-	SPACE	-	-	-	-	-	-	SPACE	-	12
13	-	SPACE	-	-	-	-	-	-	SPACE	-	14
15	-	SPACE	-	-	-	-	-	-	SPACE	-	16
17	-	SPACE	-	-	-	-	-	-	SPACE	-	18
19	-	SPACE	-	-	-	-	-	-	SPACE	-	20
21	-	SPACE	-	-	-	-	-	-	SPACE	-	22
23	-	SPACE	-	-	-	-	-	-	SPACE	-	24
TOTAL CONNECTED LOAD (VA)=67200		GROUND BUS (W)		MA=1000		BR=1000		CS=0			



- ELECTRICAL NOTES
1. ALL WORK SHALL CONFORM TO THE LATEST EDITION OF THE NATIONAL ELECTRICAL CODE. THE GOVERNING ELECTRICAL CODE AND ALL OTHER INSPECTION DEPARTMENT'S HAVING JURISDICTION. OBTAIN CERTIFICATES OR APPROVAL WHERE REQUIRED.
  2. ALL MATERIALS FURNISHED SHALL BE NEW AND SHALL BE U.L. LISTED.
  3. THE DRAWINGS INDICATE SIZE AND GENERAL LOCATION OF WORK. SCALE DIMENSIONS SHALL NOT BE USED. THE EXACT LOCATION AND LOCATION OF ALL LIGHTING FIXTURES, RECEPTACLES AND TELEPHONE OUTLETS, ETC. SHALL BE DETERMINED BY ACTUAL CONDITIONS IN THE FIELD.
  4. PRIOR TO BIDDING, CONTRACTOR SHALL VISIT THE JOB SITE AND FAMILIARIZE THEMSELVES WITH THE EXISTING CONDITIONS.
  5. ELECTRICAL CONTRACTOR SHALL COORDINATE HIS WORK WITH OTHER TRADES AND WITH OTHER CONTRACTORS WHOSE WORK MAY AFFECT THIS INSTALLATION.
  6. ELECTRICAL CONTRACTOR SHALL COORDINATE INCOMING ELECTRICAL SERVICE WITH UTILITY COMPANY AND INCLUDE IN HIS BID ALL CHARGES AND FEES INCURRED IN MODIFICATIONS.
  7. WHERE MORE THAN ONE SWITCH OCCURS IN THE SAME LOCATION, THEY SHALL BE INSTALLED IN A GANG TYPE BOX UNDER ONE COVER PLATE.
  8. ELECTRICAL CONTRACTOR SHALL COORDINATE THE TELEPHONE INSTALLATION WITH THE TELEPHONE COMPANY AND THE GENERAL CONTRACTOR.
  9. ELECTRICAL CONTRACTOR, BEFORE INSTALLING ANY OF THE WORK, SHALL SEE THAT IT DOES NOT INTERFERE WITH CLEARANCES REQUIRED FOR FINISHED COLUMNS, HUNG CEILINGS, PLASTER, PARTITIONS, WALLS, ETC. AS SHOWN IN THE ARCHITECTURAL DRAWINGS AND DETAILS. IF ANY WORK IS INSTALLED AND IT LATER DEVELOPS THAT SUCH DETAILS OR DESIGN CANNOT BE FOLLOWED, THE CONTRACTOR, AT HIS OWN EXPENSE, SHALL MAKE SUCH CHANGES IN THE WORK AS DIRECTED BY THE ARCHITECT, AS WELL AS TO PERMIT THE INSTALLATION OF THE ARCHITECTURAL WORK AS SHOWN ON THE PLANS AND DETAILS.
  10. PERFORM TEST REQUIRED BY THE OWNER OR THE ENGINEER IN CONNECTION WITH THE OPERATION OF THE ELECTRICAL SYSTEM IN THE BUILDING.
  11. ALL TESTS SHALL BE MADE IN ACCORDANCE WITH THE IEEE AND THE NATIONAL ELECTRICAL CODE.
  12. MINIMUM CONDUCTOR SIZE SHALL BE #12, 600V INSULATION. MINIMUM SIZE CONDUIT SHALL BE 3/4" EMT FOR INTERIOR USE, AND 3/4" RIGID ALUMINUM FOR EXTERIOR USE. USE TYPE MC CABLE COPPER, FOR LIGHTS, EXTERIOR FITTINGS SHALL BE CAST BOXES AND COVERS. INTERIOR FITTINGS SHALL BE CAST WHERE EXPOSED ON WALLS. STAMPED BOXES MAY BE USED ABOVE CEILINGS IN AIR CONDITIONED SPACES, WHERE LAY IN FIXTURES ARE IN USE. USE 1/4" 2 ALLOWED FOR 6" WIDTH.
  13. CONTRACTOR SHALL INSTALL WIRING AND OTHER CIRCUIT COMPONENTS TO MATCH EQUIPMENT ACTUALLY INSTALLED.
  14. INSTALL GROUND FAULT RECEPTACLES AT RECEPTACLE LOCATIONS WITHIN 5' OF SINKS OR LAVATORIES, AND AT EXTERIOR LOCATIONS. EXTERIOR RECEPTACLES SHALL ALSO BE WATERPROOF.
  15. BONDING AND GROUNDING SHALL BE IN ACCORDANCE WITH NFPA 70:230-63, NFPA 70:250-23, 250-71 & 250-72.
  16. GROUND NEUTRAL IN ACCORDANCE WITH NFPA 70:250-23b.
  17. FUSES SHALL BE ITT CLASS K5, 250 VOLT, 200,000 AMP INTERRUPTING CAP.
  18. PROVIDE SERVICES OF A FIRE/SMOKE DETECTION AND ALARM COMPANY TO DESIGN AND INSTALL ALARM SYSTEM TO MEET REQUIREMENTS OF THE STATE FIRE MARSHALL.
  19. EXTERIOR LIGHTING SHALL BE SHADED OR INWARDLY DIRECTED IN SUCH A MANNER SO THAT NO DIRECT LIGHTING OR GLARE IS CAST BEYOND THE PROPERTY LINE. THE INTENSITY OF SUCH LIGHTING SHALL NOT EXCEED ONE FOOT CANDLE AS MEASURED AT THE ABUTTING PROPERTY LINE.
  20. ALL ELECTRICAL, MECHANICAL AND PLUMBING PENETRATING FIRE PARTITIONS SHALL BE FIRE CAULKED. (PENETRATIONS THROUGH RATED CONSTRUCTION SHALL BE SEALED WITH A MATERIAL CAPABLE OF PREVENTING THE PASSAGE OF FLAMES AND HOT GASES WHEN TESTED IN ACCORDANCE WITH ASTM-E814.)

<b>OLDE TOWN SLIDELL</b> <b>FIRE DAMAGE REHABILITATION</b> 227 & 255 COUSIN STREET SLIDELL, LA 70458		<b>DAMMON</b> <b>ENGINEERING, INC.</b> <i>Architects &amp; Engineers</i>	
JOB No:	2146	DATE:	07-26-2012
DRAWN BY:	BSN	CHECKED BY:	BSN
The above drawings and specifications, designs and management's representation hereby are and shall remain the property of Dammon Engineering, and no part thereof shall be copied, distributed to others, used in connection with any work or project other than the specific project for which the fee has been prepared and distributed without written consent of Dammon Engineering. Visual contact with these drawings or specifications shall constitute complete acceptance of these restrictions.		CHIEF ENGINEER, EMMETT DAMMON, P.E. CHIEF ARCHITECT, ROBERT WILTSE 554 OLD SPANISH TRAIL SLIDELL, LA 70458	
dammonengineering.com dammoneng@bellsouth.net PHONE: 985-649-5832 FAX: 985-641-5950			