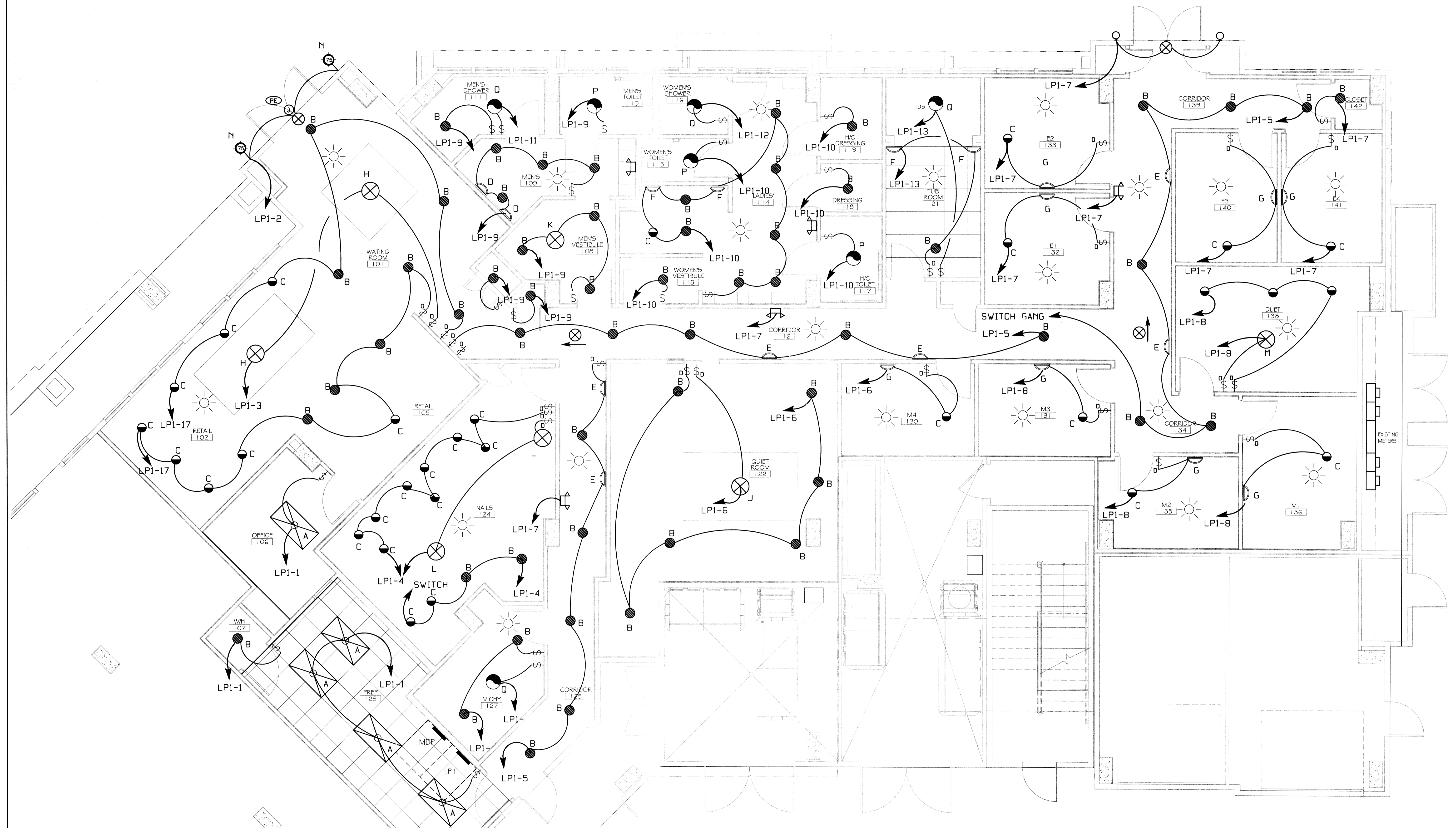


NOTE: ALL LIGHT FIXTURES AND LUMINAIRES ARE TO BE DIMMABLE AND CONNECTED TO A SLIDING DIMMER PACK, EXCEPT: OFFICE, MECHANICAL RM AND CLOSETS.



WOODHOUSE SPA
THE HIGH GROVES APARTMENTS
BATON ROUGE, LA

JOB No: 2163 DATE: 5/14/2013
DRAWN BY: KJK CHECKED BY: KJK

#	DESCRIPTION	DATE



LIGHTING PLAN

SHEET No: 10 OF 15

E-2

SCALE: 1/4" = 1'-0"

MAY 23 2013
433047

REVIEWED FOR:
STATE FIRE MARSHAL
AS PER REVIEW LETTER
BY J. MAR T. SANDNER