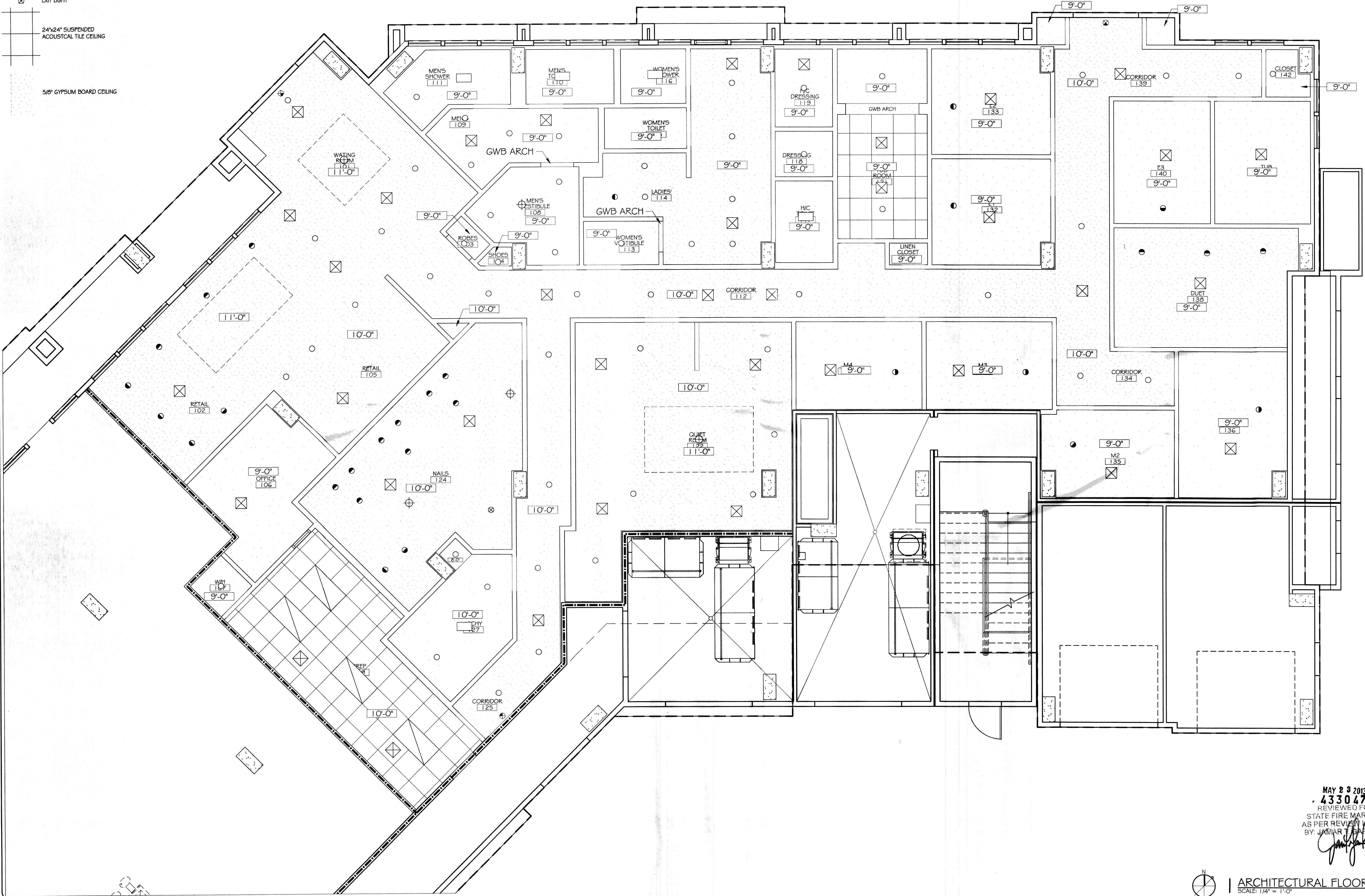


**LEGEND**

- RECESSED CAN LIGHT
- DIRECTIONAL RECESSED CAN LIGHT
- ⊗ PENDANT LIGHT
- ⊕ CHANDELIER
- FANLIGHT
- ⊗ EXIT LIGHT

24"x24" SUSPENDED ACOUSTICAL TILE CEILING

5/8" GYPSUM BOARD CEILING



#	DESCRIPTION	DATE

DATE: 2/4/2013  
JOB No: 2163  
DRAWN BY: KJK  
CHECKED BY: KJK

REFLECTED CEILING PLAN

SHEET No: 4 OF 15

**A-2**

MAY 23 2013  
433047  
REVIEWED FOR  
STATE FIRE MARSHAL  
AS PER REVIEW LETTER  
BY JAMAR TEARDNER

dammonengineering.com  
dammoneng@bellsouth.net  
dammoneng.com  
554 OLD SPANISH TRAIL  
SUDELL, LA 70456  
PHONE: 985-649-5932  
FAX: 985-641-5950

CHIEF ENGINEER: FRANK DAMMON, P.E.  
CHIEF ARCHITECT: KEVIN KINCHEN  
554 OLD SPANISH TRAIL  
SUDELL, LA 70456



5/15/13