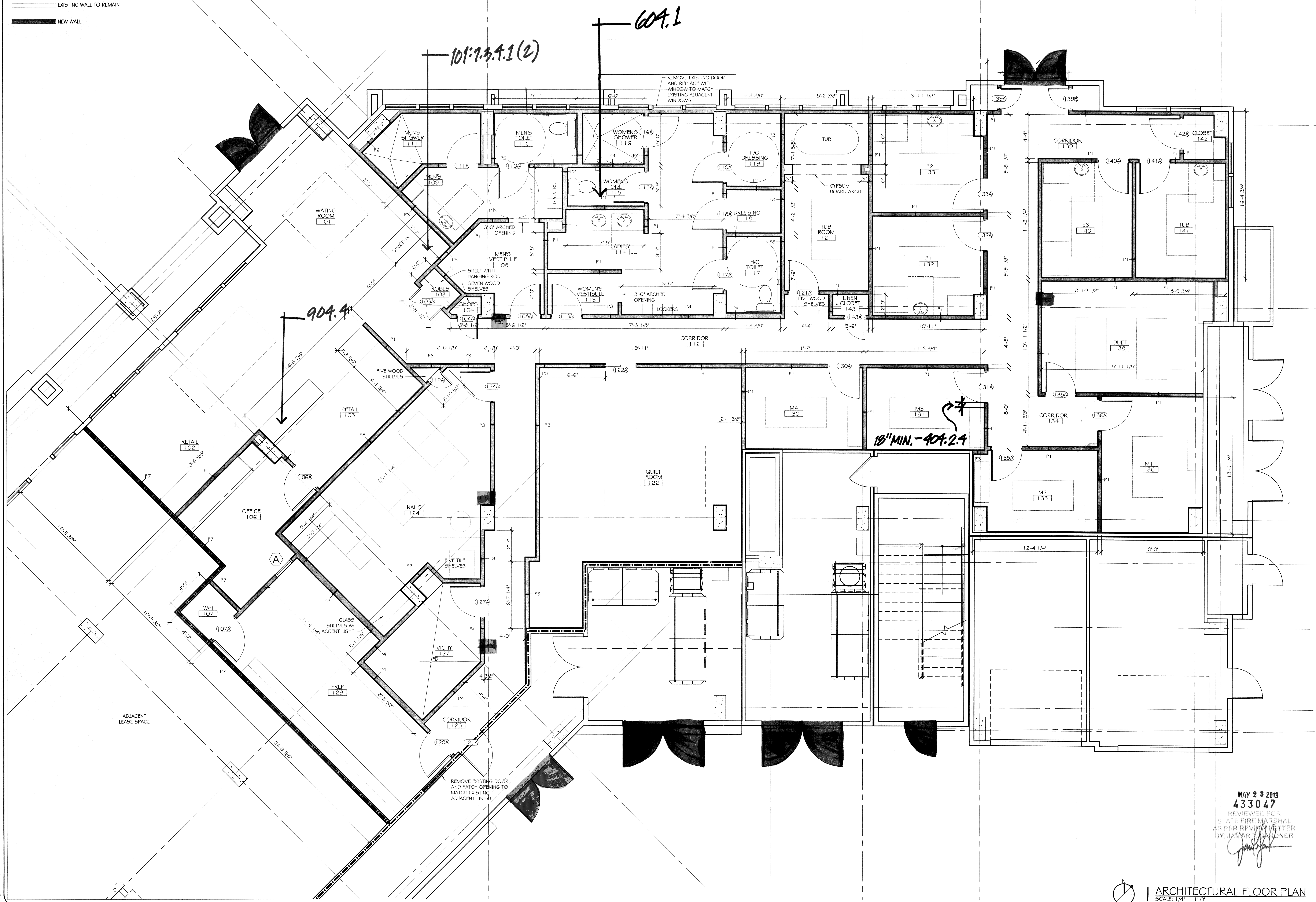


**LEGEND**  
 — ONE-HOUR RATED WALL  
 — EXISTING WALL TO REMAIN  
 — NEW WALL



**DAMMON**  
 ENGINEERING  
 Architects & Engineers

**WOODHOUSE SPA**  
 THE HIGH GROVE APARTMENTS  
 BATON ROUGE, LA

REVISIONS	DATE

DATE: 5-14-2013  
 JOB No: 2163  
 DRAWN BY: KJK  
 CHECKED BY: KJK

ARCH. FLOOR PLAN  
 SHEET No: 3 OF 15

A-1

MAY 23 2013  
 433047  
 REVIEWED FOR  
 STATE FIRE MARSHAL  
 AS PER REVISED LETTER  
 BY JIMMY WARDNER

ARCHITECTURAL FLOOR PLAN  
 SCALE: 1/4" = 1'-0"

CHIEF ENGINEER: EMMETT DAMMON, P.E.  
 CHIEF ARCHITECT: KEVIN KINCHEN  
 554 OLD SPANISH TRAIL  
 SUITE 200  
 SLIDELL, LA 70458  
 PHONE: 504-649-5632  
 FAX: 504-641-1355  
 dammonengineering.com  
 dammoneng@slidell.net

WOODHOUSE SPA  
 THE HIGH GROVE APARTMENTS  
 BATON ROUGE, LA

DATE: 5-14-2013  
 JOB No: 2163  
 DRAWN BY: KJK  
 CHECKED BY: KJK

REVISIONS	DATE

DATE: 5-15-13

ARCH. FLOOR PLAN  
 SHEET No: 3 OF 15

A-1