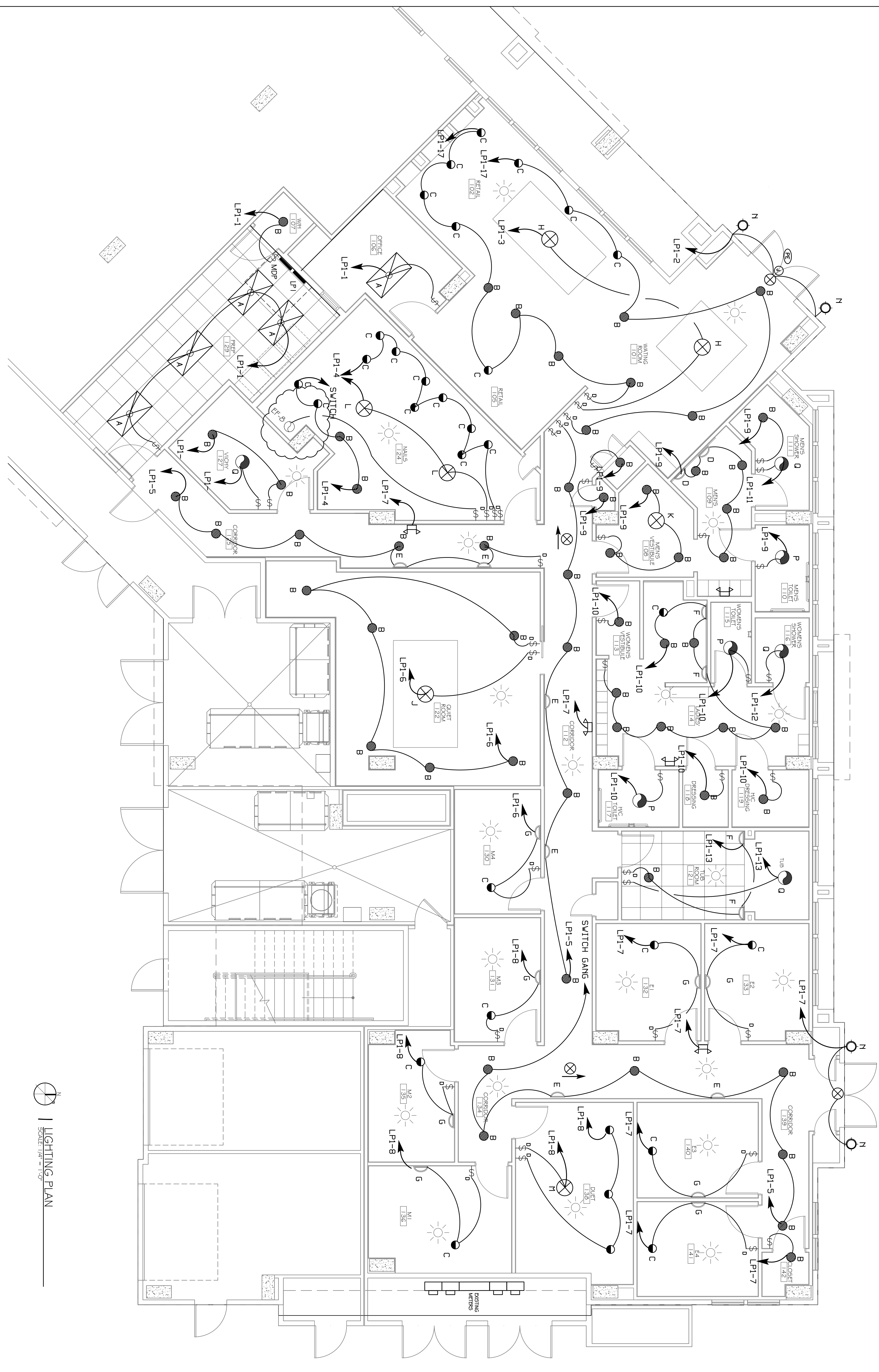


NOTE: ALL LIGHT FIXTURES AND LUMINAIRES ARE TO BE DIMMABLE AND CONNECTED TO A SLIDING DIMMER PACK, EXCEPT: OFFICE, MECHANICAL RM AND CLOSETS.



SCALE 1/4" = 1'-0"  
LIGHTING PLAN

#	DESCRIPTION	DATE
1	REVISION #1	5/23/2013
2	REVISION #2, ADD NAIL EXHAUST	7/29/2013

**WOODHOUSE SPA**  
THE HIGH GROVES APARTMENTS  
BATON ROUGE, LA

JOB No: 2163 DATE: 5/14/2013  
DRAWN BY: KJK CHECKED BY: KJK



**DAMMON**  
ENGINEERING, INC.  
Architects & Engineers

CHIEF ENGINEER: EMMETT DAMMON, P.E.  
CHIEF ARCHITECT: KEVIN KINCHEN  
554 OLD SPANISH TRAIL  
SLIDELL, LA 70458

dammonengineering.com  
dammoneng@bellsouth.net  
PHONE: 985-649-5832  
FAX: 985-641-5950

**LIGHTING PLAN**

SHEET No: 10 OF 15

**E-2**

