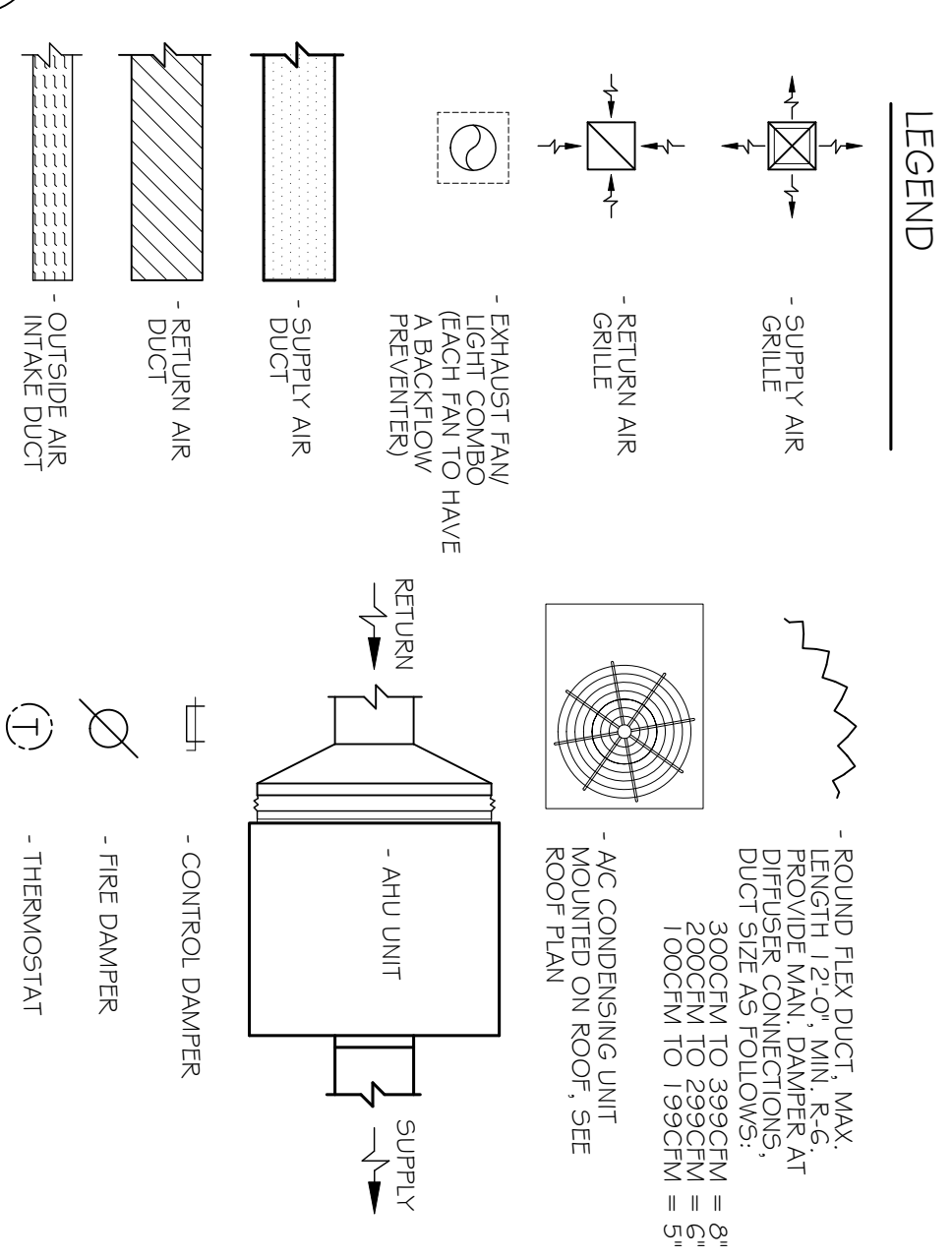


AHU UNIT SCHEDULE TOTAL HVAC TONS = 20

NO.	TOTAL BTU	CFM	O.A.	HEAT ELEC.	VOLTAGE	ELECTRICAL MCA	CKT BRKR	MANUFACTURER
1	60,000	2,000	200	15 KW	208V, 1Ø48/22		MDP-1, 3	TRANE OR EQUAL
2	60,000	2,000	200	15 KW	208V, 1Ø48/22		MDP-5, 7	
3	60,000	2,000	200	15 KW	208V, 1Ø48/22		MDP-9, 11	
4	60,000	2,000	200	15 KW	208V, 1Ø48/22		MDP-13, 15	



A/C UNIT SCHEDULE TOTAL HVAC TONS = 20

NO.	TOTAL BTU	VOLTAGE	ELECTRICAL MCA	CKT BRKR	MANUFACTURER
1	60,000	208V, 1Ø 34.6		MDP-2, 4	TRANE OR EQUAL
2	60,000	208V, 1Ø 34.6		MDP-6, 8	
3	60,000	208V, 1Ø 34.6		MDP-10, 12	
4	60,000	208V, 1Ø 34.6		MDP-34, 36	

EXHAUST FAN SCHEDULE

FAN NO.	CFM	VOLTAGE	TYPE	MANUFACTURER
EF-1	70	120	VENT/LIGHT	BROAN 744, SEE WOODHOUSE SPECS.
EF-2	70	120	VENT/LIGHT	BROAN 744, SEE WOODHOUSE SPECS.
EF-3	70	120	VENT/LIGHT	BROAN 665, SEE WOODHOUSE SPECS.
EF-4	70	120	VENT/LIGHT	BROAN 744, SEE WOODHOUSE SPECS.
EF-5	70	120	VENT/LIGHT	BROAN 665, SEE WOODHOUSE SPECS.
EF-6	70	120	VENT/LIGHT	BROAN 665, SEE WOODHOUSE SPECS.
EF-7	70	120	VENT/LIGHT	BROAN 665, SEE WOODHOUSE SPECS.
EF-8	200	120	IN-LINE	PANASONIC WHISPERLINE IN-LINE FAN, PV-200ULF1 OR EQUAL

NOTE: ALL EXHAUSTS TO HAVE BACKFLOW PREVENTERS.
 * INSTALL ONE 6"x6" RETURN GRILL OVER EACH PEDIURE CHAIR AND ONE DROP INSIDE WALL NEXT TO MANICURE TABLE. DUCT INSIDE WALL TO BE 3"x6" METAL DUCT, INSTALL DECORATIVE GRILL AT 1'2" ABOVE TABLE HEIGHT. INSTALL DAMPER AT EACH EXHAUST GRILL TO BALANCE SYSTEM. MINIMUM OF 50 CFM EACH LOCATION.

MECHANICAL PLAN
 SHEET NO: 7 OF 15
 M-1

REVISIONS

#	DESCRIPTION	DATE
1	REVISION #1	5/23/2013
2	REVISION #2, ADD NAIL EXHAUST	7/29/2013

7/29/2013

WOODHOUSE SPA
 THE HIGH GROVE APARTMENTS
 BATON ROUGE, LA

JOB NO: 2163 DATE: 5/14/2013
 DRAWN BY: KJK/JTL CHECKED BY: KJK

DAMMON ENGINEERING, INC.
 Architects & Engineers

CHIEF ENGINEER: EMMETT DAMMON, P.E.
 CHIEF ARCHITECT: KEVIN KINCHEN
 554 OLD SPANISH TRAIL
 SLIDELL, LA 70458

dammoneengineering.com
 dammoneng@slidell.rr.com
 PHONE: 985-649-5832
 FAX: 985-641-5950

NOTE-1: MECHANICAL PLAN IS DRAWN DIAGRAMATIC. DUCT LOCATIONS ARE FOR REFERENCE ONLY. FIELD LOCATE AS NEEDED BETWEEN JOISTS OR TRUSSES. INSTALL FIRE DAMPER AT ANY LOCATION WHERE DUCT PENETRATES A FIRE WALL OR CEILING. ANY EXHAUST FAN FIXTURE INSTALLED IN A RATED CEILING SHALL BE RATED FOR THAT CEILING. REFER TO MECHANICAL NOTES & DETAILS ON SHEET M-2 FOR FURTHER INFORMATION.

NOTE-2: COORDINATE LOCATION OF ALL SUPPLY AIR DIFFUSERS, RETURN AIR GRILLES, EXHAUST FANS, ETC... WITH LIGHTING PLAN.