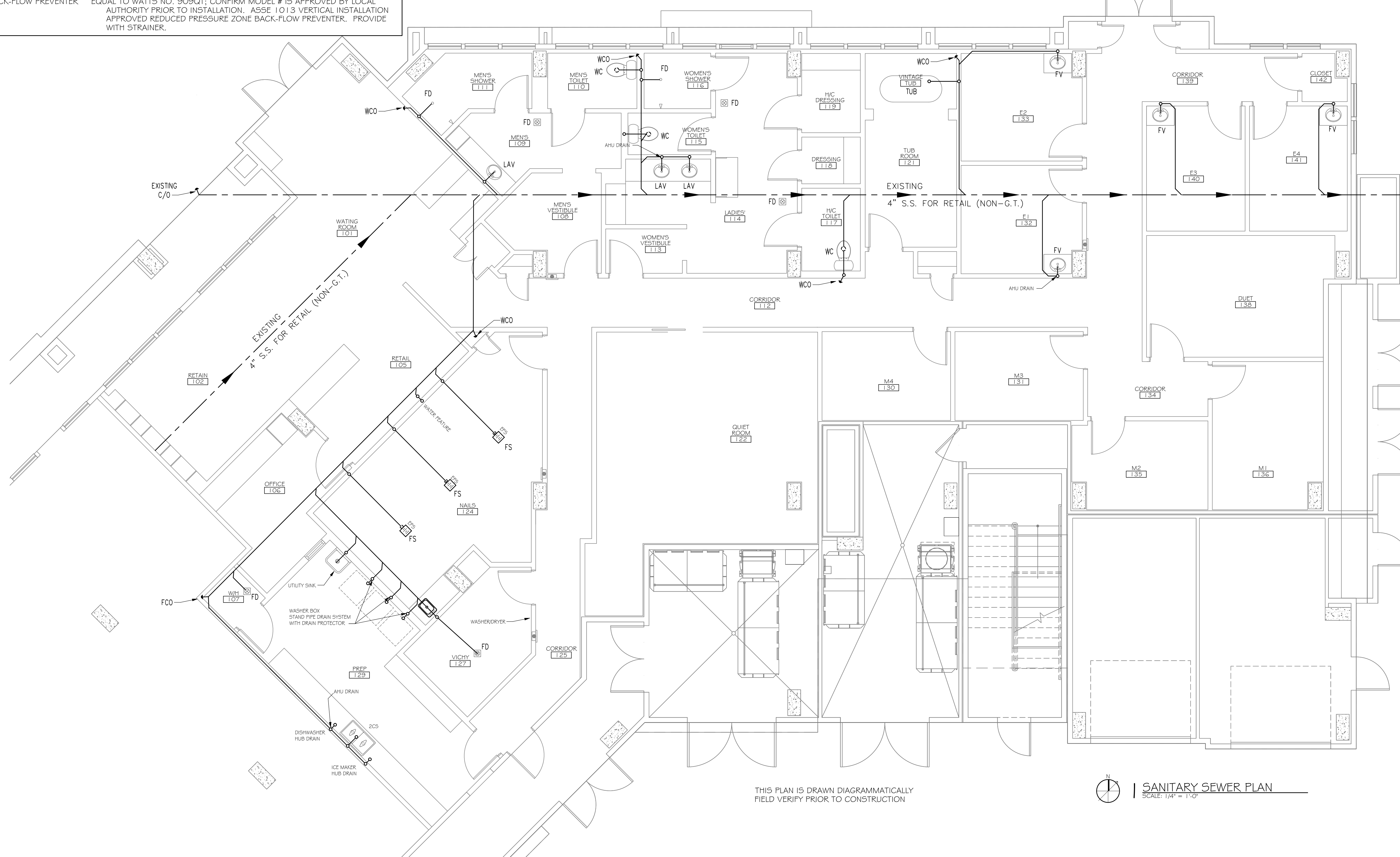


PLUMBING FIXTURE SCHEDULE

FIXTURE	DESCRIPTION
WATER CLOSET - "WC"	SEE WOODHOUSE SPECIFICATION; ALTO 137-160.
LAVATORY - "LAV"	SEE WOODHOUSE SPECIFICATION; KOHLER K219G.
FACIAL VANITY - "FV"	SEE WOODHOUSE SPECIFICATION; PORTLAND SINGLE VANITY.
VINATAGE TUB "TUB"	SEE WOODHOUSE SPECIFICATION; 67" VICTORIAN ACRYLIC SLIPPER TUB.
ECHO FOOT SPA "EFS"	SEE WOODHOUSE SPECIFICATION; CONTINUUM ECHO FOOT SPA. FOLLOW MANUFACTURER'S PLACEMENT OF FLOOR SINK.
BAR SINK	SEE WOODHOUSE SPECIFICATION; B155-2.
TWO COMP SINK "2CS"	SEE WOODHOUSE SPECIFICATION; MIDDLETON DOUBLE-BASIN SINK.
DISHWASHER	SEE WOODHOUSE SPECIFICATION; FRIGIDAIR 24" BUILT-IN DISHWASHER.
ICE MAKER	SEE WOODHOUSE SPECIFICATION; WHIRLPOOL GOLD 15" ICE MAKER.
UTILITY SINK - "US"	MUSTEE 24x20" STRUCTURAL THERMOPLASTIC FLOOR-MOUNT UTILITY SINK. 80 GALLON DUAL ELEMENT
WATER HEATER - "WH"	4" ZURN # ZN-415 W/TRAP PRIMER.
FLOOR DRAIN - "FD"	EQUAL TO ZURN MODEL Z-1900-3; PROVIDE AIR GAP FOR INDIRECT CONNECTION.
FLOOR SINK - "FS"	EQUAL TO WATTS NO. 909QT; CONFIRM MODEL # IS APPROVED BY LOCAL AUTHORITY PRIOR TO INSTALLATION. ASSE 1013 VERTICAL INSTALLATION APPROVED REDUCED PRESSURE ZONE BACK-FLOW PREVENTER. PROVIDE WITH STRAINER.
BACK-FLOW PREVENTER	

PLUMBING SITE NOTES:

- IT IS THE RESPONSIBILITY OF THIS CONTRACTOR TO FIELD VERIFY ALL SITE CONDITIONS PRIOR TO STARTING ANY PHASE OF CONSTRUCTION. ANY CHANGES OR COST NOT SHOWN ON THESE DRAWINGS SHALL BE BROUGHT TO THE ATTENTION OF THE ARCHITECT/ENGINEER.
- ALL EXISTING UTILITIES SHOWN ON THIS PLAN ARE ASSUMED TO BE CORRECT. IT IS THE RESPONSIBILITY OF THIS CONTRACTOR TO PROPERLY VERIFY ALL UNDERGROUND UTILITIES.
- KEEP ALL CUTTING AND PATCHING TO A MINIMUM.
- IT IS RECOMMENDED THAT THE SUBCONTRACTOR ARRANGE A PRE-JOB CONFERENCE WITH THE CONSTRUCTION SUPERVISOR FOR REVIEW & CLARIFICATION PRIOR TO STARTING ANY WORK.



dammonengineering.com
 dammoneng@earthlink.net
 5045 SHILOH BLVD
 SUITE 100
 BIRMINGHAM, AL 35242
 TEL: 205-988-6411
 FAX: 205-988-6411-9999

CHIEF ENGINEER: EMMETT DAMMON, P.E.
 CHIEF ARCHITECT: KEVIN KINCHEN
 5045 SHILOH BLVD, SUITE 100
 BIRMINGHAM, AL 35242

WOODHOUSE SPA
 THE HIGH GROVES APARTMENTS
 BATON ROUGE, LA

#	DESCRIPTION	DATE
1	REVISION #1	5/23/2013



5/23/2013
SANITARY SEWER PLAN

SHEET No: 12 OF 15

P-1

THIS PLAN IS DRAWN DIAGRAMMATICALLY
 FIELD VERIFY PRIOR TO CONSTRUCTION

SCALE: 1/4" = 1'-0"
SANITARY SEWER PLAN