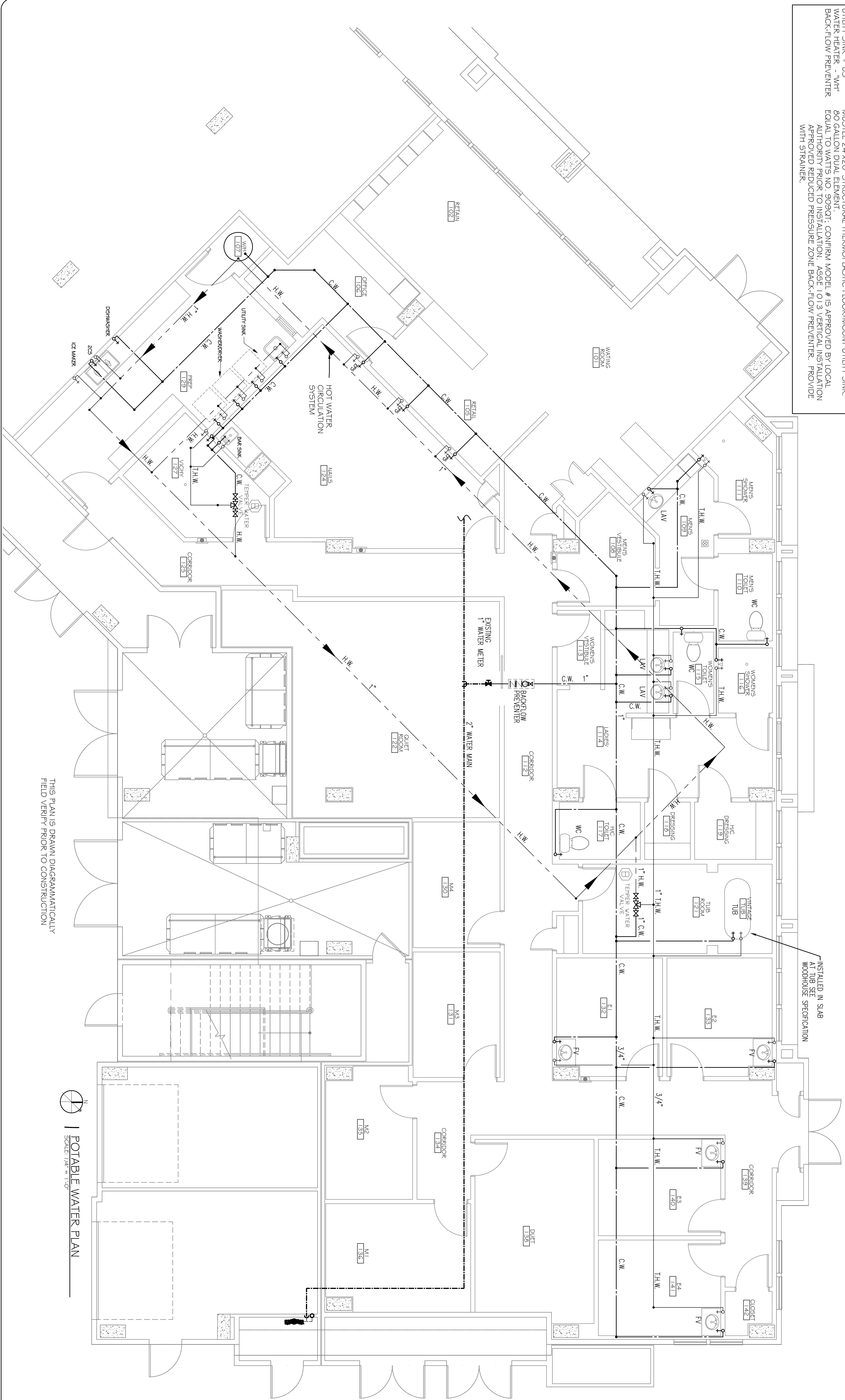


**PLUMBING FIXTURE SCHEDULE**

FIXTURE	DESCRIPTION
WATER CLOSET - "WC"	SEE WOODHOUSE SPECIFICATION; DELTA 2555RB-2.16RB.
LAVATORY - "LAV"	SEE WOODHOUSE SPECIFICATION; VANITY SINK FAUCET.
FACIAL VANITY - "FV"	SEE WOODHOUSE SPECIFICATION; RANDOLPH MORRIS RM4620RB.
VINAJAGE TUB "TUB"	RAN2000RB, RMI144FORB, RMI1410ORB, RMI14650RB.
SHOWER	SEE WOODHOUSE SPECIFICATION; DELTA R10000-LP, DELTA RFW124HDF, MONITOR 1.3 SERIES, T1.3020.
VICRY SHOWER	WATER WORKS CASCADE; SWIVELING SHOWER ARM WITH 5 SHOWER HEADS.
ECHO FOOT SPA "EFS"	SEE WOODHOUSE SPECIFICATION; CONTINUUM ECHO FOOT SPA. FOLLOW MANUFACTURERS' PLACEMENT OF HOT AND COLD WATER.
BAR SINK	SEE WOODHOUSE SPECIFICATION; DELTA B241DLF.
TWO COMP SINK "2CS"	SEE WOODHOUSE SPECIFICATION; FRIGIDAIR 24" BUILT-IN DISHWASHER.
DISHWASHER	SEE WOODHOUSE SPECIFICATION; WHIRLPOOL GOLD 1.5" ICE MAKER.
ICE MAKER	SEE WOODHOUSE SPECIFICATION; WHIRLPOOL GOLD 1.5" ICE MAKER.
UTILITY SINK - "US"	MJ51STE 24"x20" STRUCTURAL THERMOPLASTIC FLOOR-MOUNT UTILITY SINK.
WATER HEATER - "WH"	80 GALLON DUAL ELEMENT.
BACK-FLOW PREVENTER	EQUAL TO WAITS, NO. 909QT; CONFIRM MODEL #15 APPROVED BY LOCAL AUTHORITY PRIOR TO INSTALLATION. ASSE 1013 VERTICAL INSTALLATION APPROVED REDUCED PRESSURE ZONE BACK-FLOW PREVENTER. PROVIDE WITH STRAINER.

C.W. - COLD WATER  
H.W. - HOT WATER  
T.W.H. - TEMPERED HOT WATER



**PLUMBING SITE NOTES:**

1. IT IS THE RESPONSIBILITY OF THE CONTRACTOR TO FIELD VERIFY AND arrange for any necessary permits and approvals for this construction. ANY CHANGES OR COSTS NOT SHOWN ON THESE DRAWINGS SHALL BE BROUGHT TO THE ATTENTION OF THE ARCHITECT/ENGINEER.
2. ALL EXISTING UTILITIES SHOWN ON THIS PLAN ARE ASSUMED TO BE CORRECT. IT IS THE RESPONSIBILITY OF THE CONTRACTOR TO PROPERLY VERIFY ALL UNDERGROUND UTILITIES.
3. KEEP ALL CUTTING AND PATCHING TO A MINIMUM.
4. IT IS RECOMMENDED THAT THE SUBCONTRACTOR ARRANGE A PRE-JOB CONFERENCE WITH THE ARCHITECT/ENGINEER AND SUPERVISOR FOR REVIEW & COMMENT PRIOR TO STARTING ANY WORK.

INSTALLED IN SLAB AT TUB SEE WOODHOUSE SPECIFICATION

THIS PLAN IS DRAWN DIAGRAMMATICALLY FIELD VERIFY PRIOR TO CONSTRUCTION

SCALE: 1/4" = 1'-0"  
POTABLE WATER PLAN

**WOODHOUSE SPA**  
THE HIGH GROVES APARTMENTS  
BATON ROUGE, LA

JOB No: 2163 DATE: 5/14/2013  
DRAWN BY: JCT CHECKED BY: KJK



**DAMMON ENGINEERING, INC.**  
Architects & Engineers

CHIEF ENGINEER: EMMETT DAMMON, P.E.  
CHIEF ARCHITECT: KEVIN KINCHEN  
554 OLD SPANISH TRAIL  
SLIDELL, LA 70456

dammoneengineering.com  
dammoneeng@bellsouth.net  
PHONE: 985-649-5832  
FAX: 985-641-15950

#	DESCRIPTION	DATE
1	REVISION #1	5/23/2013



POTABLE WATER PLAN

SHEET No: 1.3 OF 1.5  
**P-2**