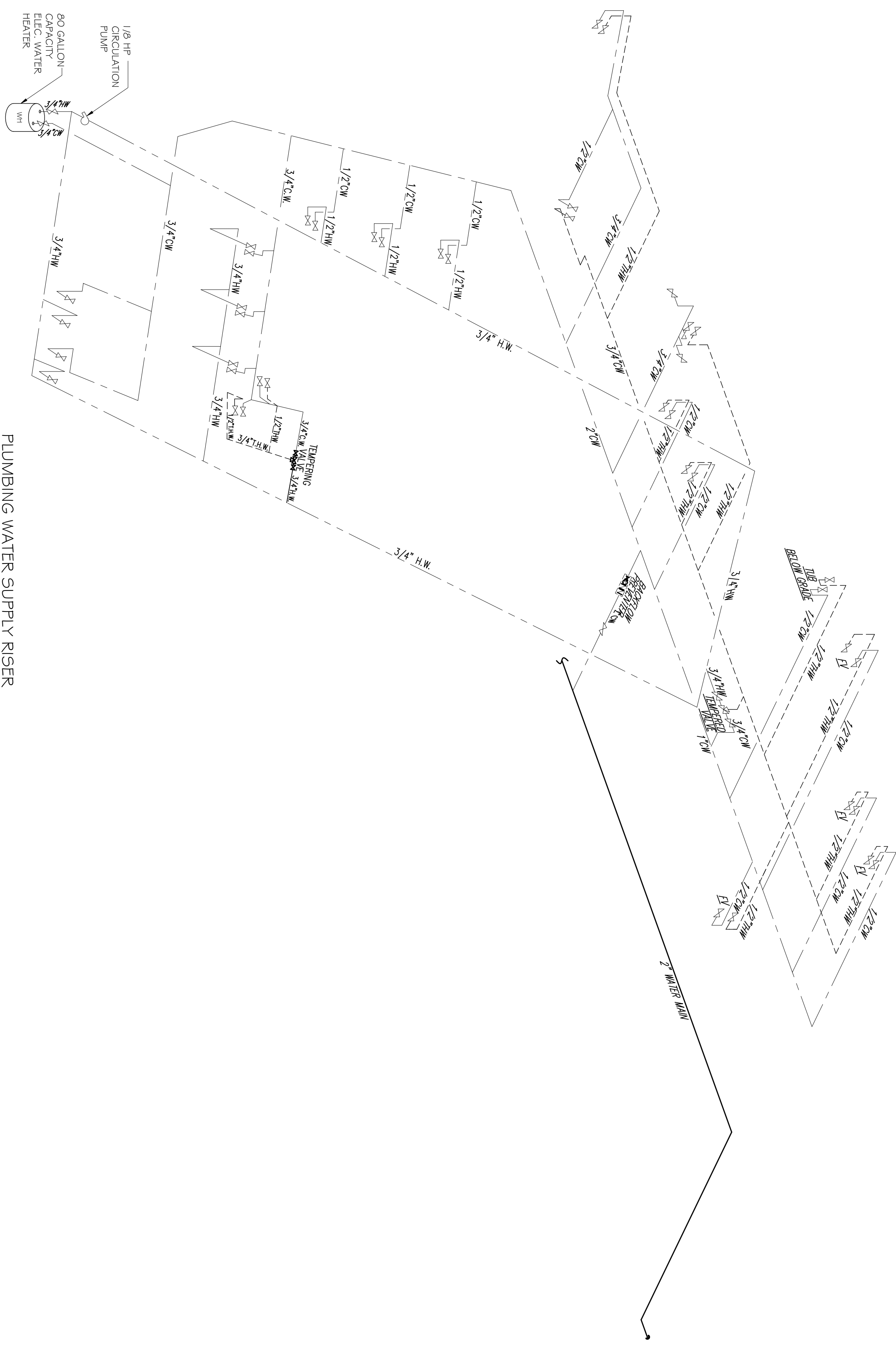
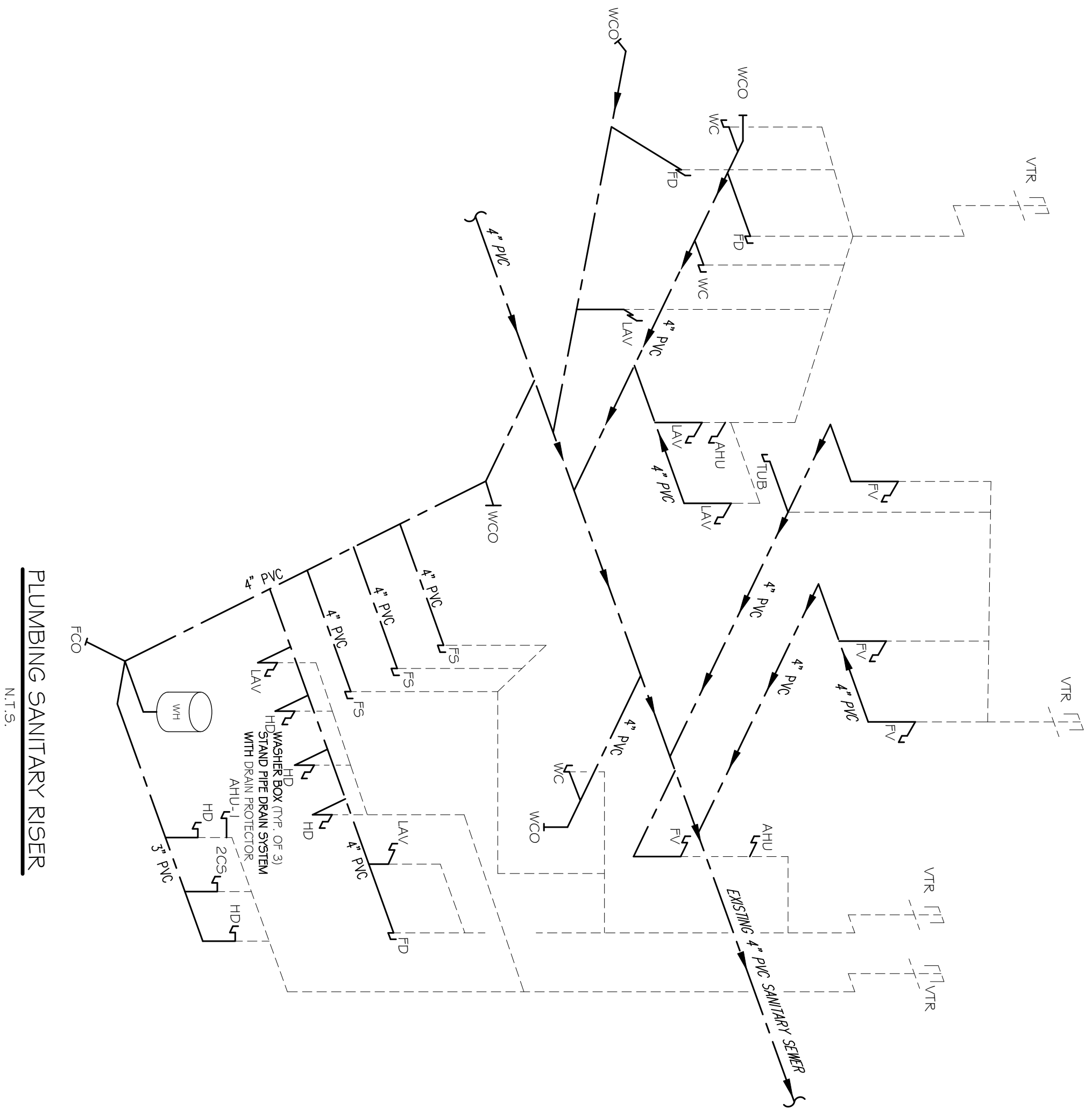


PLUMBING FIXTURE SCHEDULE	
WATER CLOSET	W.C.
LAVATORY	"LAV"
FACIAL VANITY	"FV"
VINTAGE TUB	"TUB"
ECHO FOOT SPA	"FFS"
TWO COMP SPA	"2CS"
UTILITY SINK	"US"
WATER HEATER	"WH"
FLOOR DRAIN	"FD"
HUB DRAIN	"HD"
FLOOR SINK	"FS"



PLUMBING WATER SUPPLY RISER
N.T.S.



PLUMBING SANITARY RISER
N.T.S.

THIS PLAN IS DRAWN DIAGRAMMATICALLY
FIELD VERIFY PRIOR TO CONSTRUCTION

REVISIONS		
#	DESCRIPTION	DATE
1	REVISION #1	5/23/2013

WOODHOUSE SPA
THE HIGH GROVES APARTMENTS
BATON ROUGE, LA

JOB No:	2163	DATE:	2/4/2013
DRAWN BY:	JCT	CHECKED BY:	KJK

The above drawings and specifications, designs and arrangements represented hereby are and shall remain the property of Dammon Engineering, and no part thereof shall be copied, reproduced or used in connection with any work or project other than the specific project for which they have been prepared and delivered without written consent of Dammon Engineering. Visual contact with these drawings or specifications shall constitute conclusive evidence of acceptance of these restrictions.

DAMMON

ENGINEERING, INC.

Architects & Engineers

CHIEF ENGINEER: EMMETT DAMMON, P.E.
 CHIEF ARCHITECT: KEVIN KINCHEN
 554 OLD SPANISH TRAIL
 SLIDELL, LA 70458
 dammonengineering.com
 dammoneng@bellsouth.net
 PHONE: 985-649-5832
 FAX: 985-641-5950

**PLUMBING
RISER
DIAGRAMS**

SHEET No: 15 of 15

P-4

