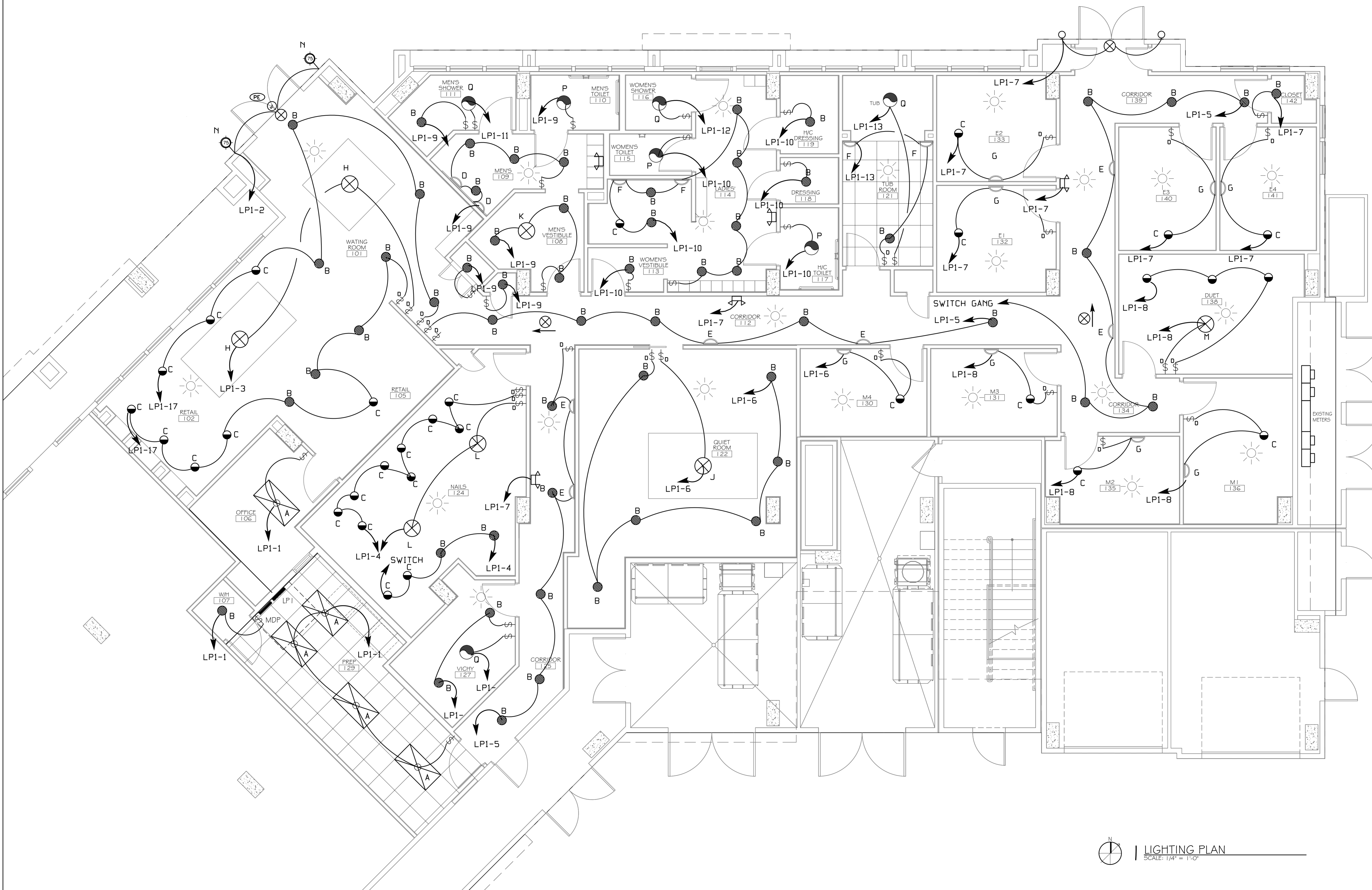
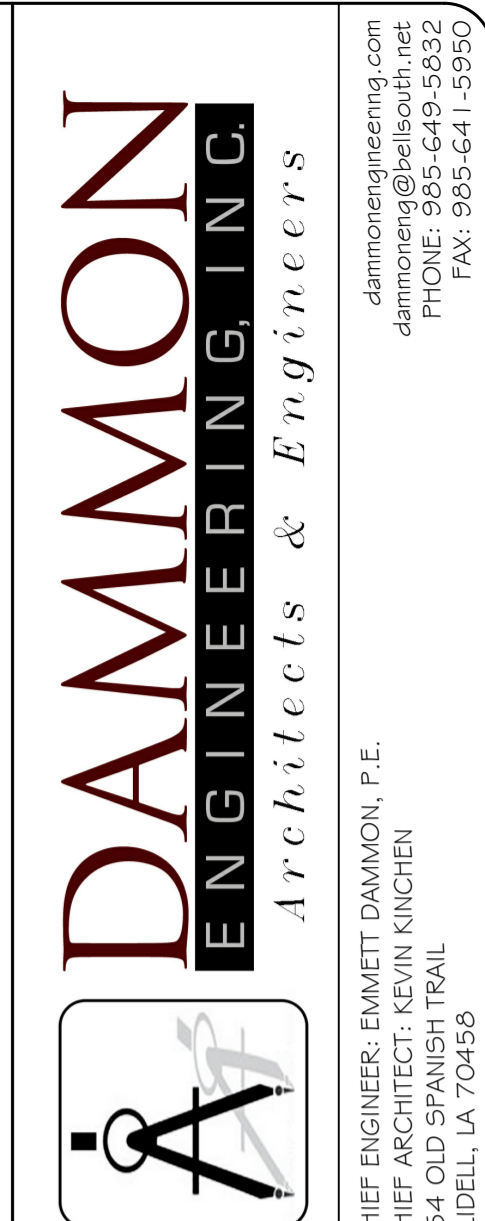


NOTE: ALL LIGHT FIXTURES AND LUMINAIRES ARE TO BE DIMMABLE AND CONNECTED TO A SLIDING DIMMER PACK, EXCEPT: OFFICE, MECHANICAL RM AND CLOSETS.




LIGHTING PLAN
 SCALE: 1/4" = 1'-0"


DAMMON
 ENGINEERING, INC.
 Architects & Engineers

WOODHOUSE SPA
 THE HIGH GROVES APARTMENTS
 BATON ROUGE, LA

JOB No: 2163 DATE: 5/14/2013
 DRAWN BY: KJK CHECKED BY: KJK

#	DESCRIPTION	DATE
1	REVISION #1	5/23/2013

LIGHTING PLAN
 SHEET No: 10 OF 15
E-2

The above drawings and specifications, when read in conjunction with the contract documents, shall govern the project. The client is responsible for providing all necessary information and for obtaining all necessary permits. The architect is not responsible for any errors or omissions in the drawings or specifications.

DAMMON ENGINEERING, INC.
 554 OLD SPANISH TRAIL
 SUITE 100
 SUDELL, LA 70455
 PHONE: 985-649-5932
 FAX: 985-641-5950