

BUILDING CODE INFORMATION

BUILDING CODE
 IBC (INTERNATIONAL BUILDING CODE) 2009

OCCUPANCY TYPE OF GROUP(S) (IBC 2009 CHAPTER 3):
 MERCHANTILE
 BUSINESS

CONSTRUCTION TYPE(S):
 V-A 4,811 S.F.

MAXIMUM AREA (S.F.):
 MERCHANTILE 573 S.F.
 BUSINESS 4,238 S.F.

REQUIRED SEPARATION OF OCCUPANCIES (TABLE 508.2.5):
 BM NR

MAXIMUM AREA OF EXTERIOR WALL OPENINGS:
 N/A

OCCUPANT LOAD CALCULATIONS BY OCCUPANCY:
 MERCHANTILE 60 S.F./OCCUPANT = 10
 BUSINESS 100 S.F./OCCUPANT = 43
 TOTAL = 53

EXIT REQUIREMENTS:
 FIRST FLOOR - 2 EXITS

MAXIMUM EXIT ACCESS TRAVEL DISTANCE (TABLE 1016.2):
 B - 300' M - 250'

MINIMUM CORRIDOR WIDTH (SECTION 1018.1 # SECTION 1005.1):
 44"

MAXIMUM DEAD END CORRIDOR (SECTION 1018.4):
 50'

MAXIMUM COMMON PATH OF TRAVEL (1014.3):
 B - 100' M - 75'

FIRE RESISTANCE RATING REQUIREMENTS FOR BLDG. ELEMENTS: (TBL 601)
 STRUCTURAL FRAME = 1 HRS.
 BEARING WALLS (INTERIOR AND EXTERIOR) = 1 HRS.
 NON-BEARING INTERIOR WALLS = 0 HRS.
 FLOOR CONSTRUCTION = 1 HRS.
 ROOF CONSTRUCTION = 1 HRS.

LIFE-SAFETY INFORMATION

LIFE SAFETY CODE:
 NFPA 101 LIFE SAFETY CODE 2009

OCCUPANCY:
 MERCHANTILE CHAPTER 26
 BUSINESS CHAPTER 38

REQUIRED SEPARATION:
 N/A

CLASSIFICATION OF HAZARD OF CONTENTS:
 ORDINARY

CONSTRUCTION TYPE(S) - (CHAPTER 8, TABLE A.8.2.1.2)
 V-A
 SPRINKLERED

AREA CALCULATIONS BY OCCUPANCY:
 FIRST FLOOR
 MERCHANTILE 574 S.F.
 BUSINESS 4,237 S.F.
 TOTAL 4,811 S.F.

OCCUPANT LOAD CALCULATIONS BY OCCUPANCY:
 MERCHANTILE 574 S.F. = 20
 BUSINESS 4,237 S.F. = 43
 TOTAL = 63

MEANS OF EGRESS:
 NUMBER OF EXITS - M-2 B-2
 MINIMUM EXIT SEPARATION DISTANCE FOR REMOTELY LOCATED EXITS
 1/3 DIAGONAL 37'-0"

STAIR WIDTH REQUIREMENTS: 36"

EXTINGUISHMENT REQUIREMENTS:
 SPRINKLERED (REQUIRED)

SUBDIVISION OF BUILDING SPACE:
 NONE

DETECTION/ALARM:
 NONE

EXIT REQUIREMENTS:
 2 EXITS

MAXIMUM EXIT ACCESS TRAVEL DISTANCE (TABLE A.7.6):
 M - 250' B - 300'

MINIMUM CORRIDOR WIDTH (SECTION 1018.1 # SECTION 1005.1):
 44"

MAXIMUM DEAD END CORRIDOR (TABLE A.7.6):
 50'

MAXIMUM COMMON PATH OF TRAVEL (TABLE A.7.6):
 M - 100' B - 100'

LEGEND

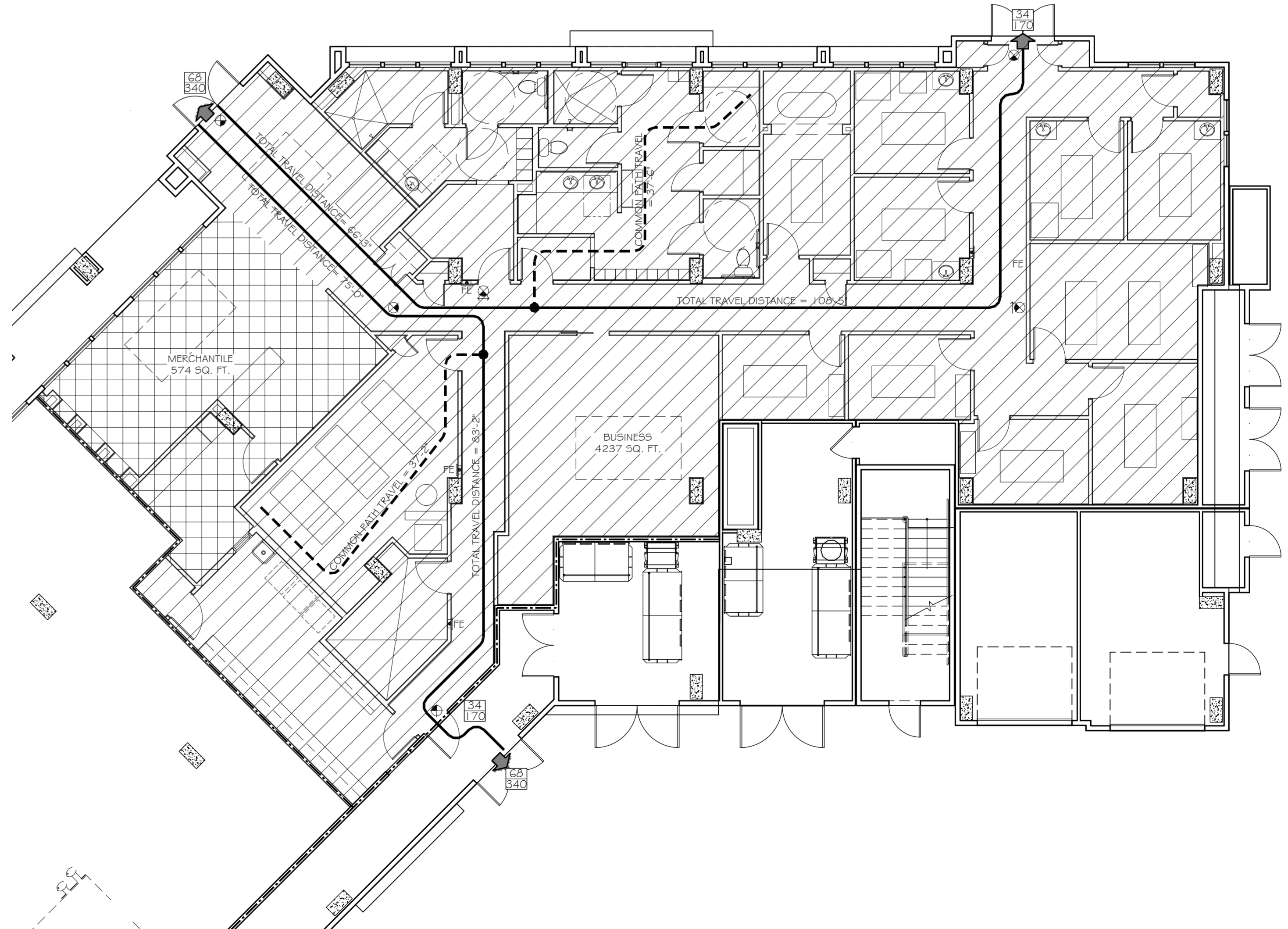
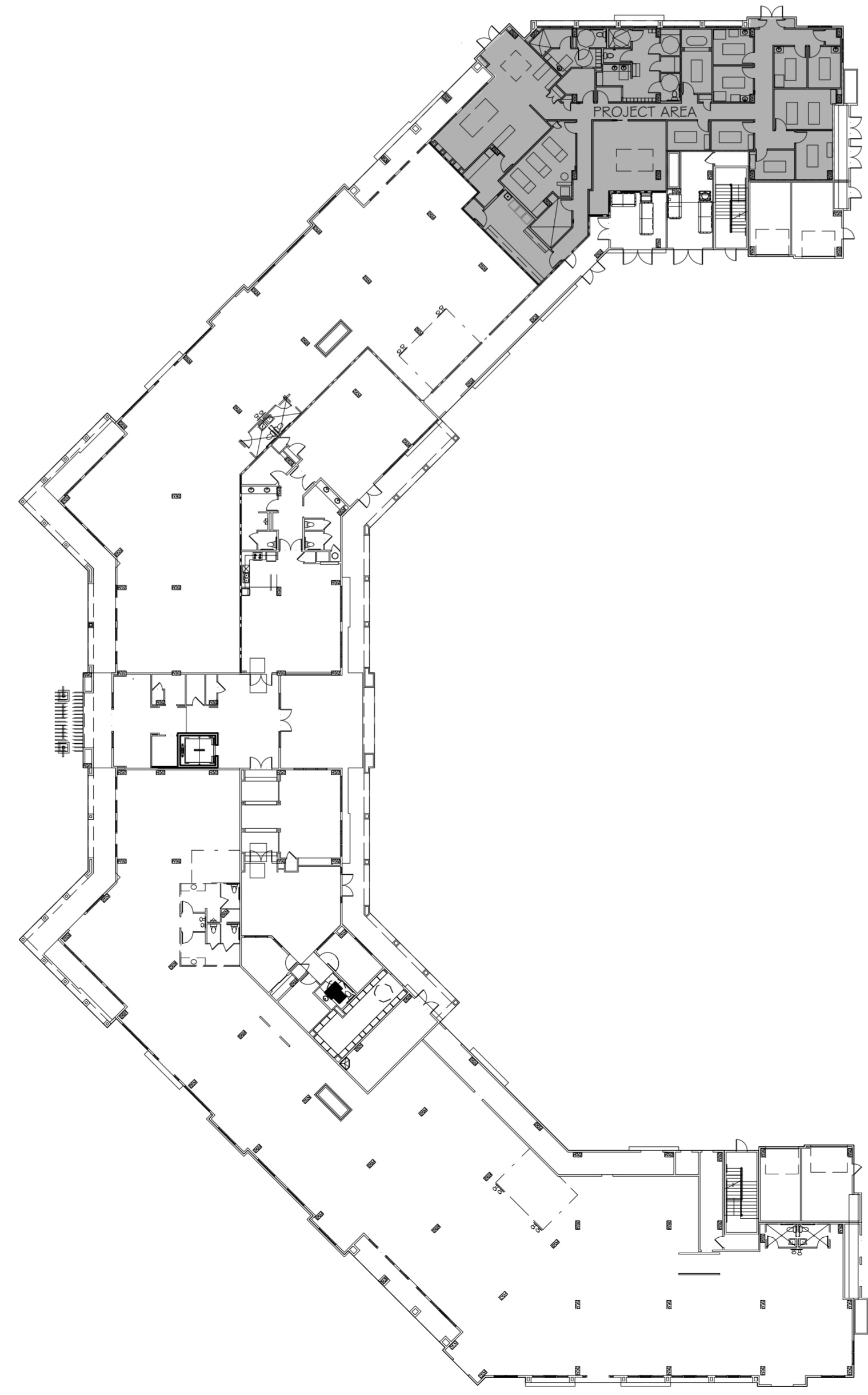
OCCUPANCIES

Business (diagonal hatching)

Merchantile (grid pattern)

SYMBOLS

- EXITS
- DOOR FIRE RATING (MINUTES)
- DOOR WIDTH/EGRESS CAPACITY
- EXIT LIGHT
- FIRE EXTINGUISHER CABINET
- FIRE EXTINGUISHER W/ WALL MOUNTED BRACKET
- ONE-HOUR RATED PARTITION
- COMMON PATH OF TRAVEL/TRAVEL DISTANCE
- TRAVEL DISTANCE
- DECISION POINT



DAMMON ENGINEERING, INC.
Architects & Engineers

ADMINISTRATIVE: dammon@dammoneng.com
 dammoneng@bellsouth.net
 PHONE: 985-649-5432
 FAX: 985-641-5950

CHIEF ENGINEER: DAMON DAMMON, P.E.
 CHIEF ARCHITECT: KEVIN KIRCHEN
 554 OLD SPANISH TRAIL
 SUITE 100, BATON ROUGE, LA 70805

WOODHOUSE SPA
 THE HIGH GROVE APARTMENTS
 BATON ROUGE, LA

JOB No: 2163 DATE: 5-14-2013
 DRAWN BY: KJK CHECKED BY: KJK

#	DESCRIPTION	DATE

LIFE SAFETY PLANS
 NOTES &
 TABULATIONS

SHEET No: 2 OF 15

G-2