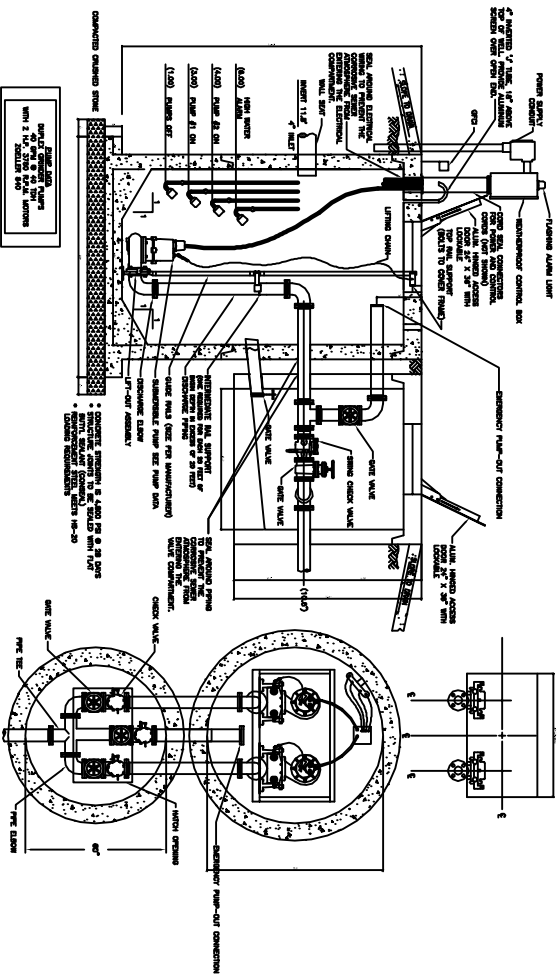
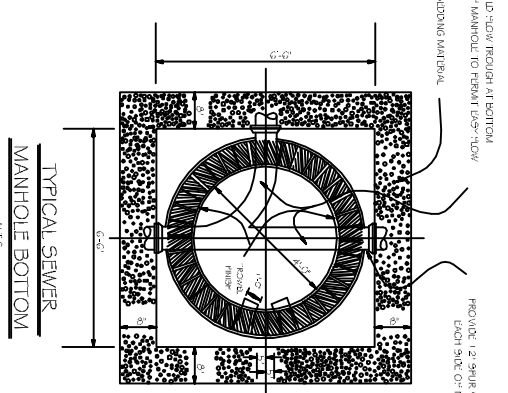


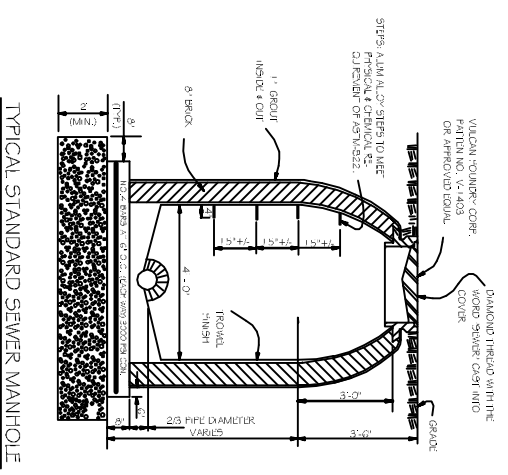
PIPE MAIN BEDDING DETAIL FOR SEWER AND WATER  
SCALE: N.T.S.



DUPLICEX LIFT STATION DETAIL  
N.T.S.



TYPICAL SEWER MANHOLE BOTTOM  
N.T.S.



TYPICAL STANDARD SEWER MANHOLE  
N.T.S.

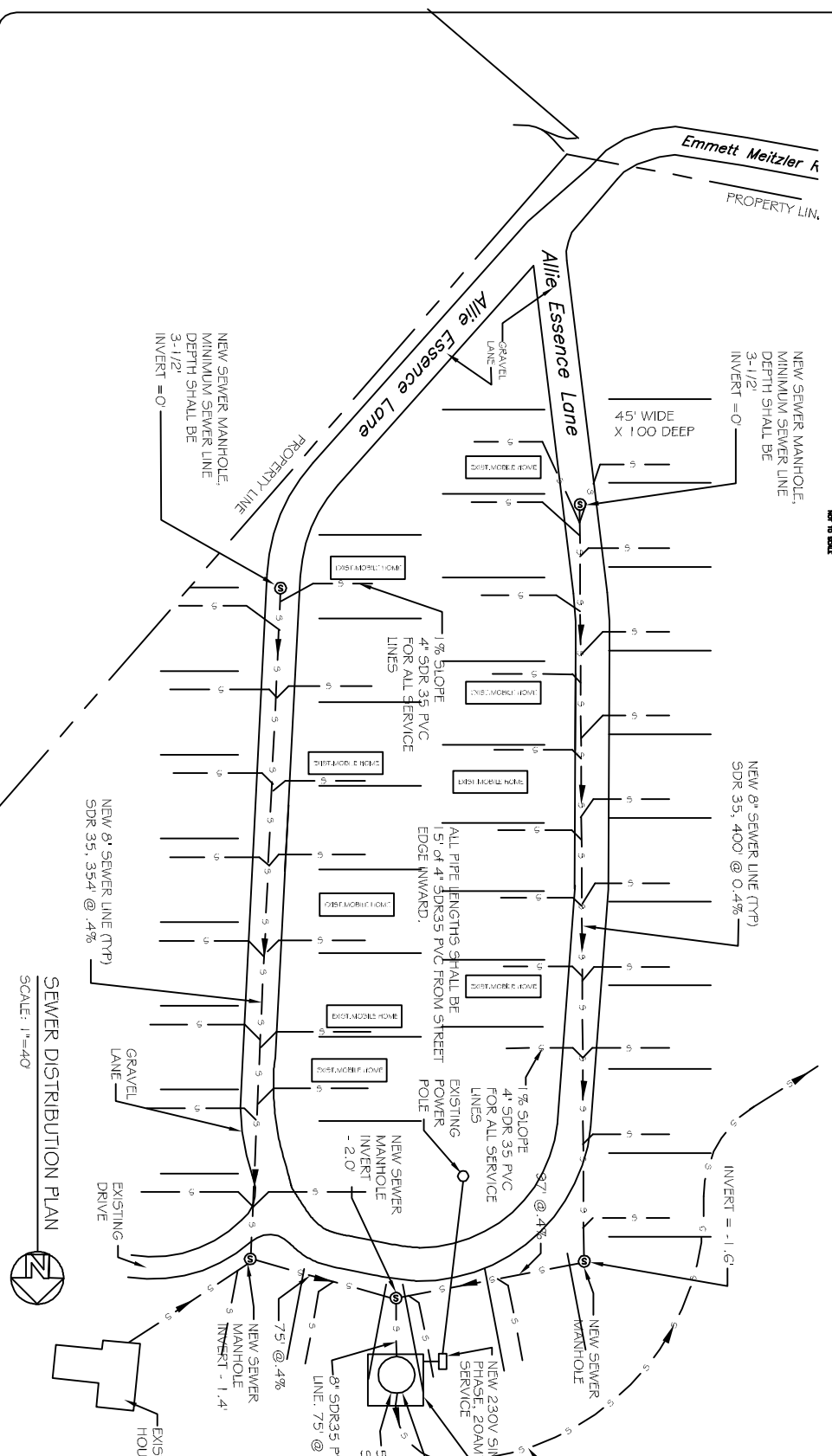
EXISTING TRAILER PARK 3.4 ACRE  
(ADDITION OF SEWER PUMP STATION/  
FORCE MAIN & POTABLE WATER  
TO CONNECT WITH NICHOLSON WATER &  
SEWER ASSOCIATION, INC.)

- NOTE:**
- 1) OWNER SHALL IDENTIFY ALL TRAILER SPACING FOR CONTRACTOR TO LAYOUT SEWER WORK.
  - 2) ALL PIPE LENGTHS SHALL BE 15' OF 4\"/>

**GENERAL NOTES:**

1. PROVIDE ALL LABOR, MATERIAL AND EQUIPMENT FOR A COMPLETE OPERATING SYSTEM.
2. ALL WORK AND MATERIAL SHALL CONFORM STRICTLY TO THE LATEST LOCAL, CITY, COUNTY, STATE AND NATIONAL GOVERNING CODES.
3. CONTRACTOR IS TO FIELD VERIFY ALL EXISTING UTILITY LOCATIONS, ELEVATIONS AND SIZES PRIOR TO COMMENCING ANY WORK. CONTRACTOR SHALL PAY NECESSARY FEES FOR THE UTILITIES CONNECTIONS.
4. CONTRACTOR IS RESPONSIBLE TO SET NEW INVERTS OF SEWERAGE PIPES.
5. TEST ALL PIPING AT REQUIRED PRESSURE.
6. ALL PUMPING SHALL BE CLOSELY COORDINATED WITH WATER SYSTEM.
7. ALL PLUMBING SHALL BE CLOSELY COORDINATED.
8. ALL SEWER LINES SHOWN ARE DIAGRAMATIC.
9. MINIMUM PIPE BURIAL SHALL BE 3'-0\"/>

**NOTE:**  
ALL EXISTING SEPTIC TANKS SHALL BE CRUSHED AND FILLED IN.



SEWER DISTRIBUTION PLAN  
SCALE: 1\"/>

**DREAMLAND MOBILE HOME PARK**  
ALLIE ESSENCE LANE  
NICHOLSON, MISSISSIPPI

JOB No: 2182 DATE: 05-19-2014  
DRAWN BY: CKD CHECKED BY: BM

**DAMMON ENGINEERING, INC.**  
Architects & Engineers

CHIEF ENGINEER: BRIAN MISTICH, PE  
CHIEF ARCHITECT: KEVIN KINCHEN  
554 OLD SPANISH TRAIL  
SLIDELL, LA 70458

dammonengineering.com  
dammon@dammoneng.com  
PHONE: 985-649-5832  
FAX: 985-649-1411

SEWER DISTRIBUTION PLAN

SHEET NO: 02 OF 04

C2

REVISIONS	
#	DESCRIPTION